

FDA Staff Manual Guides, Volume I – Organizations and Functions

Department of Health and Human Services

Food and Drug Administration

Center for Food Safety and Applied Nutrition

Office of Food Safety

Division of Plant Products and Beverages

Effective Date: December 14, 2018

1. Division of Plant Products and Beverages (DCEDF).

- A. Develops regulations, guidance, policy, programs, position papers, and advisory opinions, and recommends research priorities for issues related to the safety, composition, and quality of plant foods, beverages and safety of spices and seasoning mixes
- B. Provides expert policy, scientific and technical advice to parties throughout the Center, the Food and Drug Administration (FDA), other Federal Agencies, U.S. and foreign government officials and external stakeholders including Congress. Serves as principal Center liaison to industry, international and other organizations on issues related to plant foods, beverages and spices and seasoning mixes.
- C. Reviews industry petitions and regulatory actions, provides expert scientific testimony and provides technical review of laboratory analyses supporting proposed enforcement actions.
- D. Collaborates with other parts of the FDA to identify emerging needs, and to plan, develop, and coordinate compliance programs, field assignments, and work plans, as related to plant foods, beverages, and spices and seasoning mixes.
- E. Develops, collects, and interprets data regarding the safety, composition, quality, and manufacture of plant foods, beverages, and spices and seasoning mixes.
- F. Reviews proposed regulatory actions for policy consideration and provide technical evaluation and necessary scientific support on cases related to plant foods, beverages, and spices and seasoning mixes.

- G. Serves as the FDA focal point for the development of programs and the implementation of the laws and regulations related to this office regarding plant foods, beverages, and spices and seasoning mixes.

2. Plant Products Branch (DCEDF1)

- A. Develops regulations, guidance, policy, programs, position papers, and advisory opinions, and recommends research priorities for issues related to the safety, composition, and quality of processed carbohydrates and confections, grain and grain products, and fats and oils.
- B. Develops, collects, and interprets data regarding the safety, composition, quality, and manufacture of processed carbohydrates and confections, grain and grain products, and fats and oils.
- C. Provides expert policy, scientific and technical advice to parties throughout the Center, the FDA, other Federal Agencies, U.S. and foreign government officials and external stakeholders including Congress. Serves as the principal Center liaison to industry, international and other organizations on issues related to processed carbohydrates and confections, grain and grain products, and fats and oils.
- D. Reviews proposed regulatory actions for policy consideration and provides technical evaluation and necessary scientific support on cases related to processed carbohydrates and confections, grain and grain products, and fats and oils.
- E. Reviews petitions on processed carbohydrates and confections, grain and grain products, and fats and oils.
- F. Serves as the FDA focal point for the development of programs and the implementation of the laws and regulations related to this office regarding processed carbohydrates and confections, grain and grain products, and fats and oils.

3. Beverages Branch (DCEDF2)

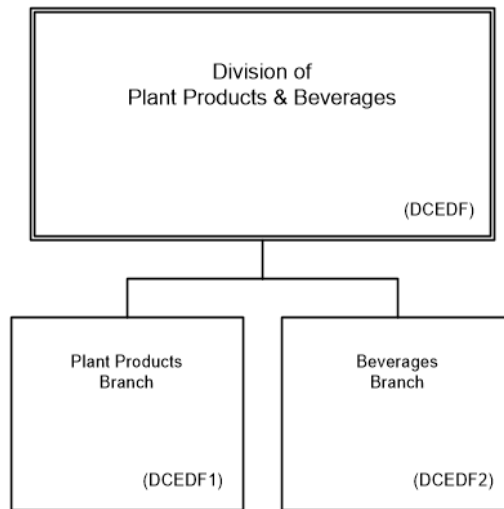
- A. Develops regulations, guidance, policy, programs, position papers, and advisory opinions, and recommends research priorities for issues related to the safety, composition, and quality of plant derived beverages, bottled water, alcoholic beverages and other miscellaneous beverages.

- B. Develops, collects, and interprets data regarding the safety, composition, quality, and manufacture of plant derived beverages, bottled water, alcoholic beverages and other miscellaneous beverages.
- C. Provides expert policy, scientific and technical advice throughout the Center, the FDA, other Federal Agencies, U.S. and foreign government officials and external stakeholders including Congress. Serves as the principal Center liaison to industry, international and other organizations on issues related to plant derived beverages, bottled water, alcoholic beverages and other miscellaneous beverages.
- D. Reviews proposed regulatory actions referred for policy consideration and provides technical evaluation and necessary scientific support on cases related to plant derived beverages, bottled water, alcoholic beverages and other miscellaneous beverages.
- E. Reviews petitions on plant derived beverages, bottled water, alcoholic beverages and other miscellaneous beverages.
- F. Serves as the FDA focal point for the development of programs and the implementation of the laws and regulations related to this office regarding plant derived beverages, bottled water, and other miscellaneous beverages.

4. Authority and Effective Date.

The functional statements for the Division of Plant Products and Beverages were approved by the Secretary of Health and Human Services and effective on December 14, 2018.

**Department of Health and Human Services
Food and Drug Administration
Center for Food Safety and Applied Nutrition
Office of Food Safety
Division of Plant Products and Beverages**



Staff Manual Guide 1231.137
Organizations and Functions
Effective Date: December 14, 2018

The following is the Department of Health and Human Services, Food and Drug Administration, Center for Food Safety and Applied Nutrition, Office of Food Safety, Division of Plant Products and Beverages organization structure depicting all the organizational structures in the immediate office reporting to the Director.

These branches report to the Division of Plant Products and Beverages (DCEDF)

- Plant Products Branch
- Beverages Branch