

# Alternative control strategies

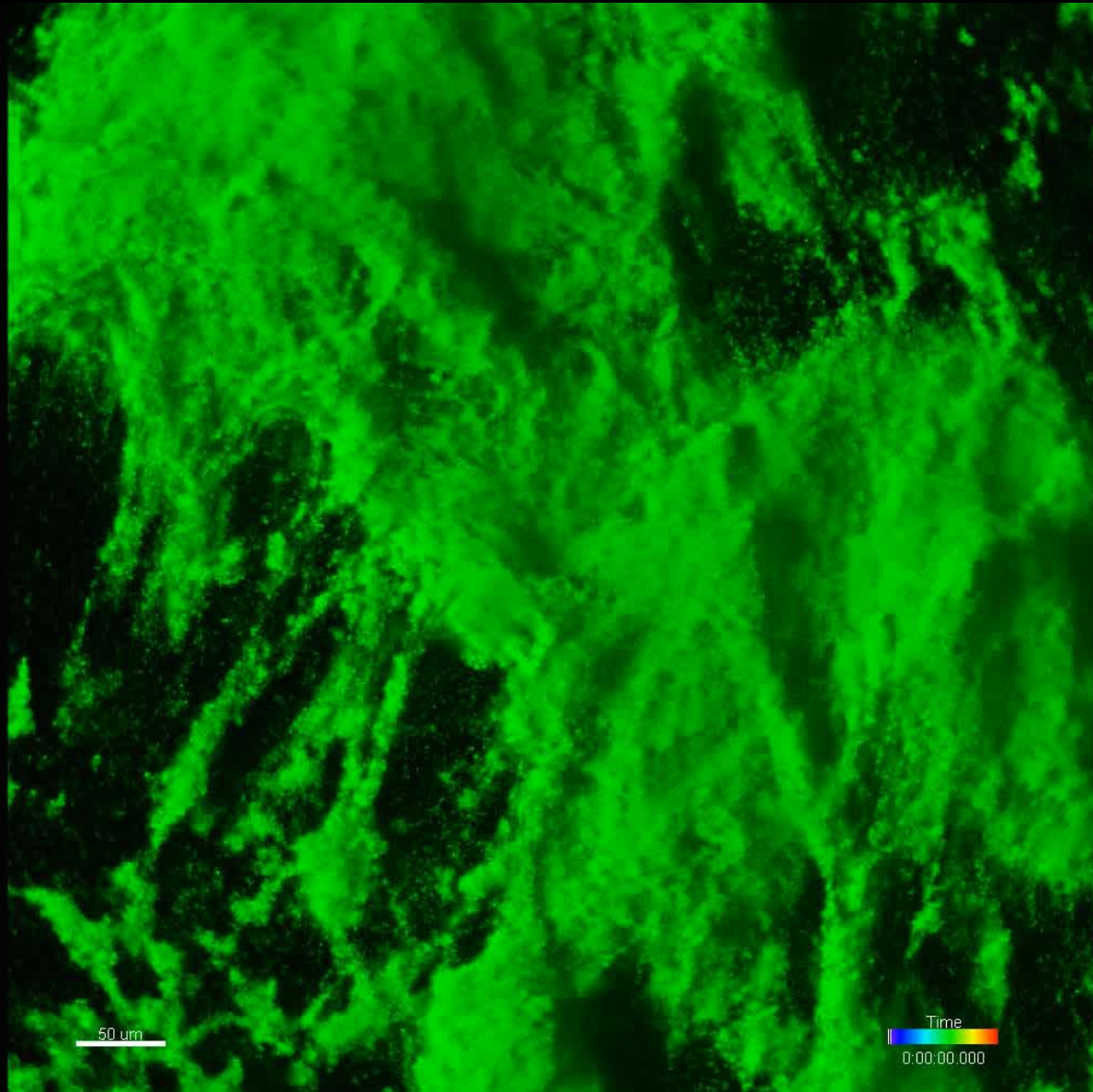
- Prevent attachment systems
- Promote detachment
- Kill persisters
- Target microbes accurately
- Screen natural product libraries
- Inhibit quorum sensing
- Shift ecology with probiotics

# Prevent attachment

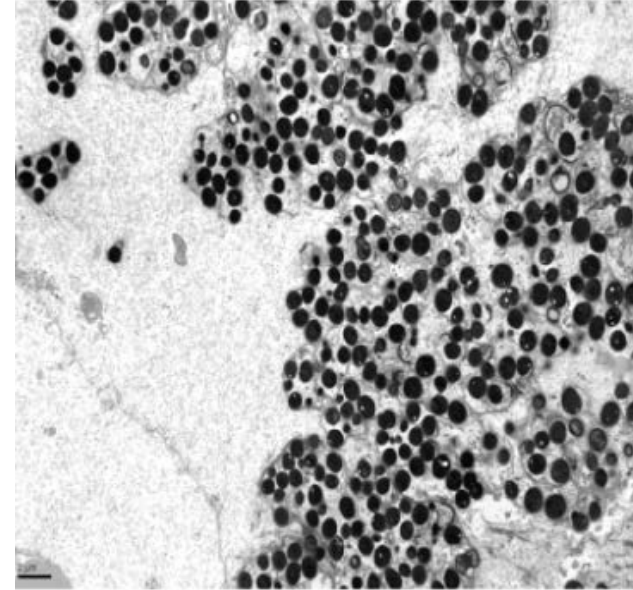
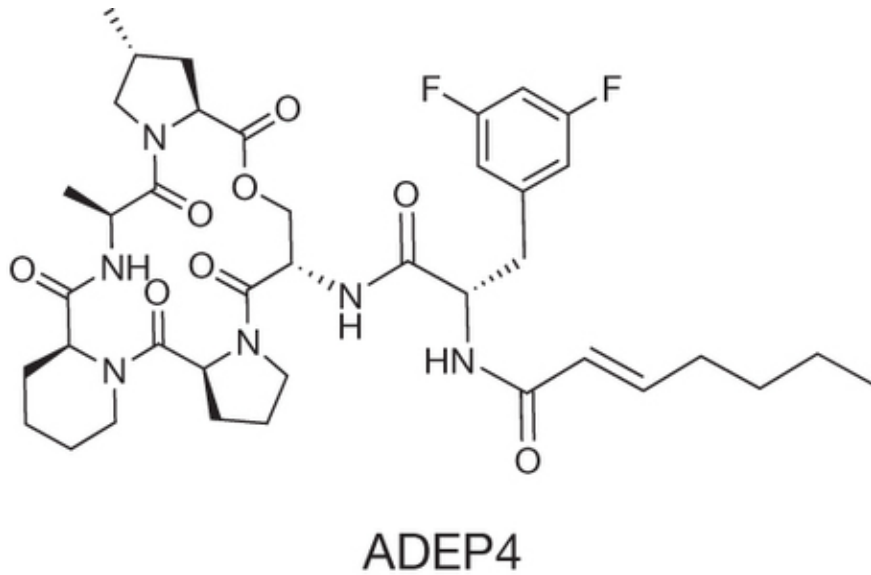


Wong TS et al. (2011) Bioinspired self-repairing slippery surfaces with pressure-stable omniphobicity. *Nature* **477**:443.

# Promote detachment



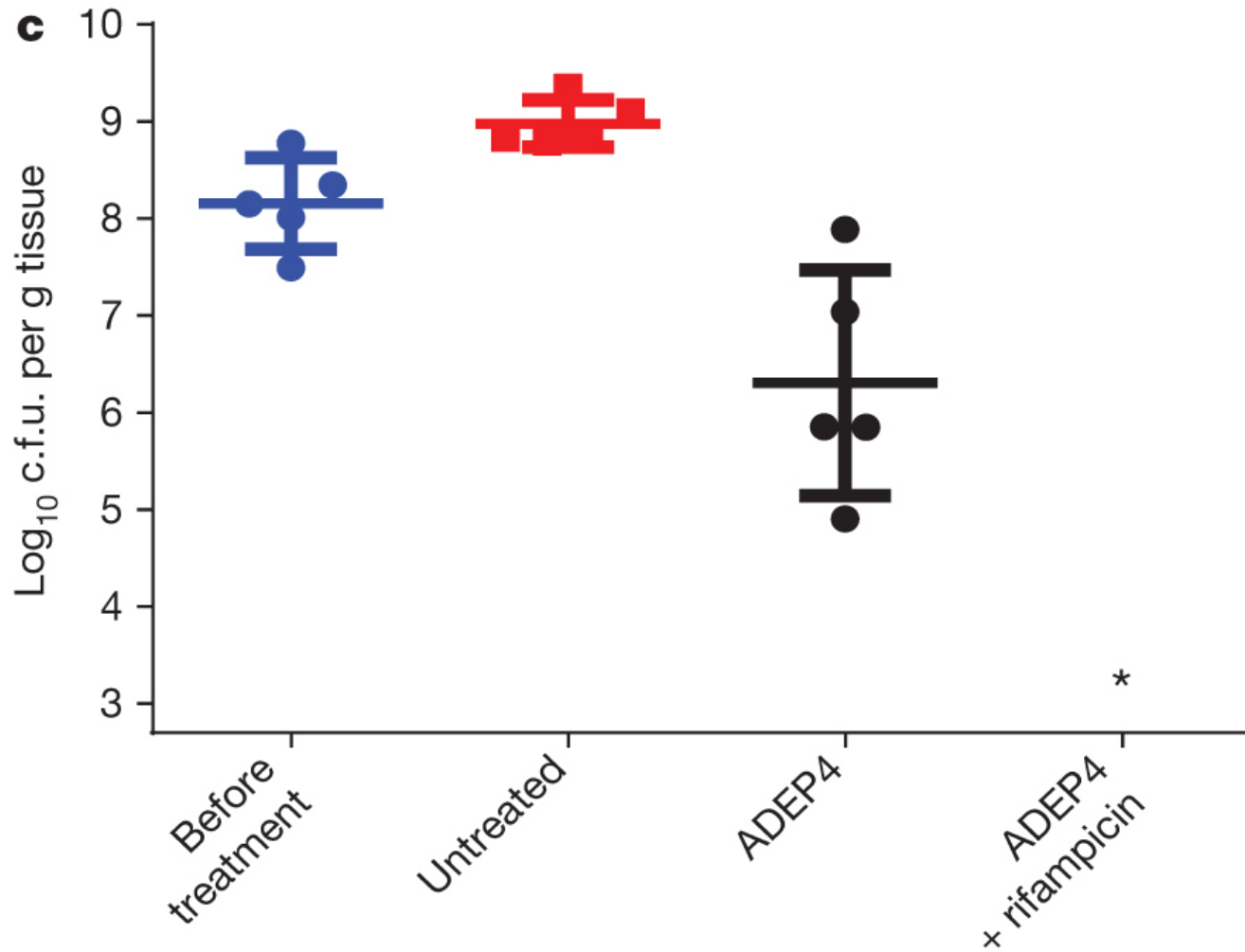
# Kill persisters



*S. aureus* cells within  
extracellular matrix

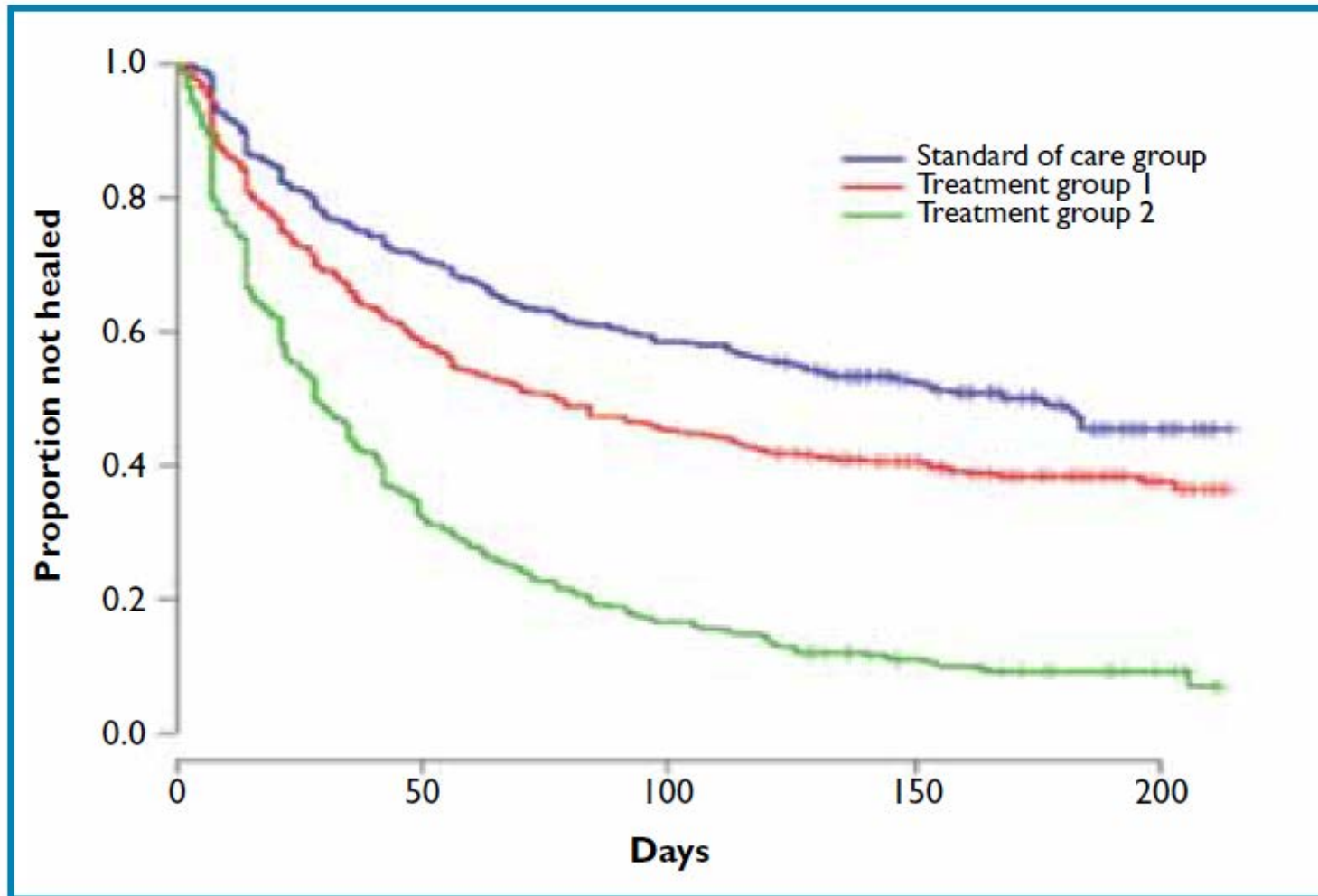
Conlon BP et al. (2013) Activated ClpP kills persisters and eradicates a chronic biofilm infection. *Nature* **503**:365.

# Two-pronged approach



Conlon BP et al. (2013) Activated ClpP kills persisters and eradicates a chronic biofilm infection. *Nature* **503**:365.

# Target microbes accurately



Dowd SE et al. (2011) Molecular diagnostics and personalized medicine in wound care: assessment of outcomes. *J Wound Care* **20**:232.

