

FDA Staff Manual Guides, Volume I – Organizations and Functions

Department of Health and Human Services

Food and Drug Administration

Center for Food Safety and Applied Nutrition

Office of Analytics and Outreach

Effective Date: December 14, 2018

1. Office of Analytics and Outreach (DCEC).

- A. Provides Center leadership for food defense, non-outbreak emergency coordination and counterterrorism activities in relation to that segment of the U.S. food supply that is regulated by the Food and Drug Administration (FDA).
- B. Serves as the Center's lead for directing, developing, and coordinating web communications, outreach and consumer education and as a resource to all stakeholders in responding to inquiries on topics related to Center for Food Safety and Applied Nutrition (CFSAN) regulated products.
- C. Provides direction for strengthening systems for conducting and coordination of risk analysis activities and related research associated with national and international issues involving CFSAN-regulated products
- D. Develops and facilitates public health analytics and signal detection related to CFSAN-regulated products by providing statistical and epidemiological support for the Center in research, extramural and regulatory programs.
- E. Provides the coordination and response to congressional correspondence, and coordinates activities for the Center's public meetings.

2. Food Defense and Emergency Coordination Staff (DCEC1)

- A. Develops regulations, guidance, policies, programs, position papers, and advisory opinions, for issues related to intentional contamination within the scope of the responsibility of the Office.
- B. Develops food defense tools and resources for industry, local government, and academia to encourage the implementation of food defense measures.

- C. Collects and analyzes data on vulnerability and develops mitigation strategies to protect against such vulnerabilities.
- D. Conducts domestic and international outreach to increase awareness of and builds global capacity for food defense through information sharing, outreach, and technical assistance.
- E. Coordinates and directs activities for CFSAN's non-outbreak emergency operations and response to man-made and natural disasters. Manages and coordinates CFSAN's non-outbreak emergency exercise program which includes planning and executing tabletop and other types of emergency exercises to assess the Center's readiness.

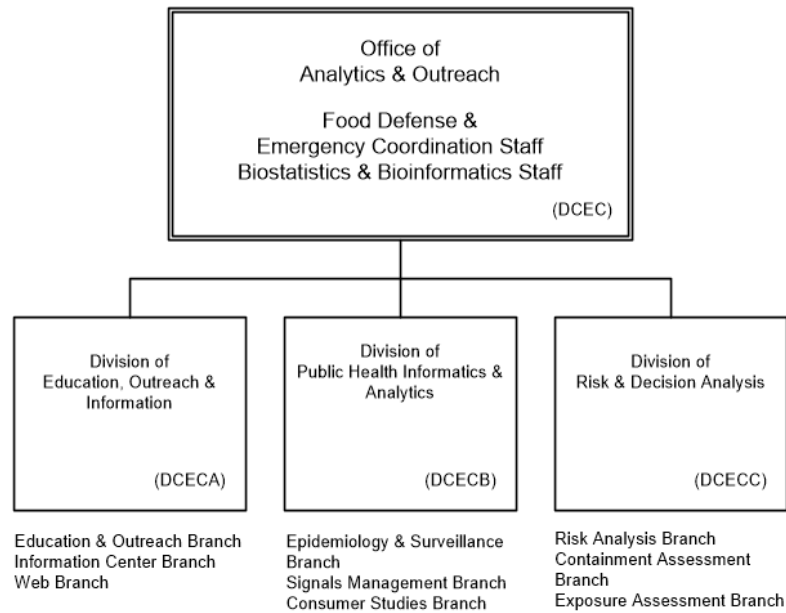
3. Biostatistics and Bioinformatics Staff (DCEC2)

- A. Provides comprehensive statistical and bioinformatics support to all internal and external regulatory and research-related Center activities, including study design, analysis, and participation in the development and application of regulatory standards and compliance activities.
- B. Provides statistical perspective on proposed data collection and analysis efforts related to publication of guidance, policies, and regulations from Food and Drug Administration (FDA)/CFSAN and FDA/Food and Veterinary Medicine program.
- C. Interacts with national, international, public and private organizations to identify common problems and areas of mutual interest associated with quantitative analysis of food safety-related data.
- D. Provides support to CFSAN for information technology issues related to statistical and bioinformatics computing, including high-performance computing for analysis of large genomic data sets.

4. Authority and Effective Date.

The functional statements for the Office of Analytics and Outreach were approved by the Secretary of Health and Human Services and effective on December 14, 2018.

**Department of Health and Human Services
Food and Drug Administration
Center for Food Safety and Applied Nutrition
Office of Analytics and Outreach**



Staff Manual Guide 1231.12
Organizations and Functions
Effective Date: December 14, 2018

The following is the Department of Health and Human Services, Food and Drug Administration, Center for Food Safety and Applied Nutrition, Office of Analytics and Outreach organization structure depicting all the organizational structures in the immediate office reporting to the Director.

These staffs and divisions report to the Office of Analytics and Outreach (DCEC)

- Food Defense and Emergency Coordination Staff
- Biostatistics and Bioinformatics Staff

These branches report to the Division of Education, Outreach and Information (DCECA)

- Education and Outreach Branch
- Information Center Branch
- Web Branch

These branches report to the Division of Public Health Informatics and Analytics (DCECB)

- Epidemiology and Surveillance Branch
- Signals Management Branch
- Consumer Studies Branch

These branches report to the Division of Risk and Decision Analysis (DCECC)

- Risk Analysis Branch
- Containment Assessment Branch
- Exposure Assessment Branch