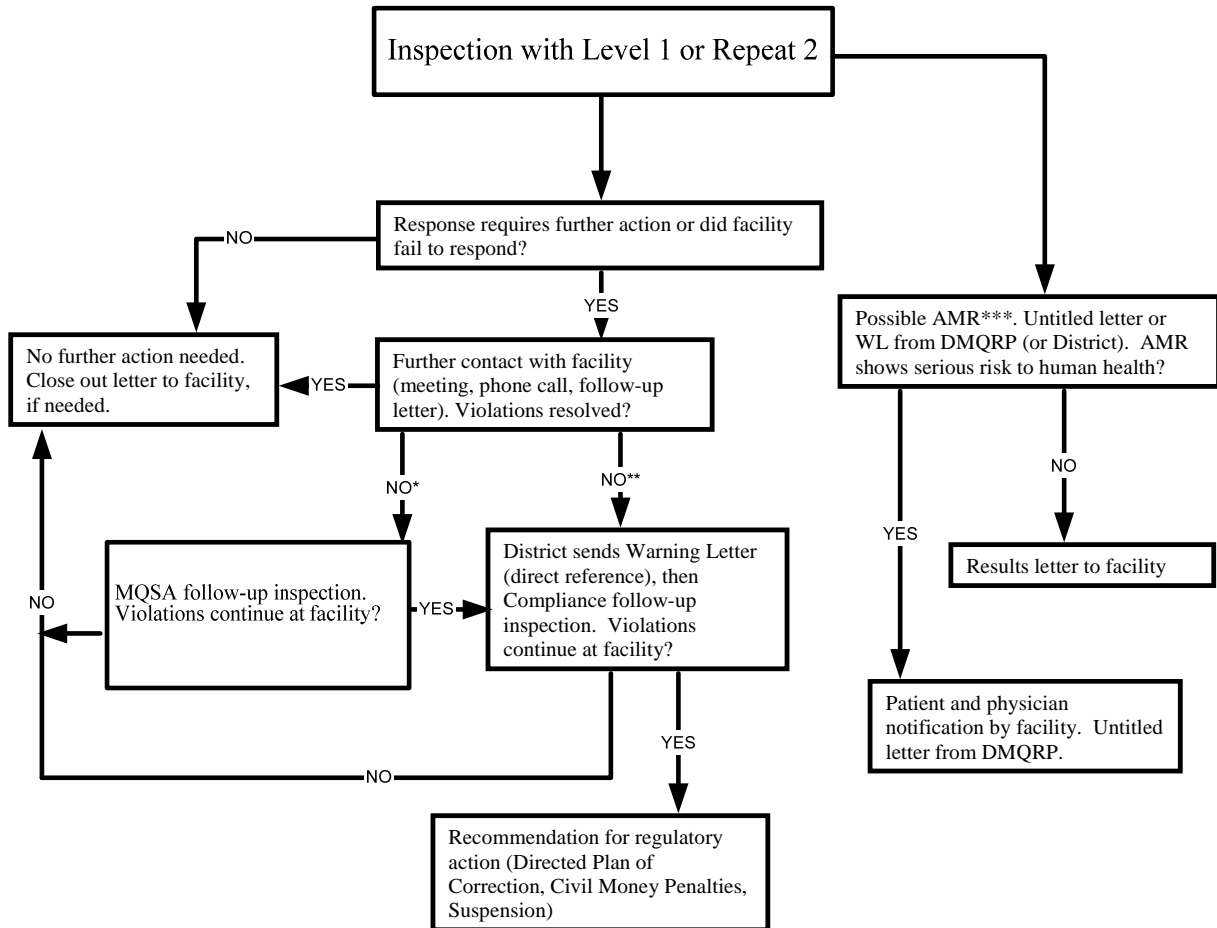


Follow-Up for MQSA Inspections



*Facility response to Level 1 or repeat Level 2 inspection observation appears adequate but requires further verification or facility fails to respond, or response is inadequate to Level 2 or repeat Level 3 inspection observation

** Facility fails to respond, or response is inadequate to Level 1 or repeat Level 2 inspection observation

***FDA requires Additional Mammography Review (AMR) for Level 1 phantom image score (during an inspection) or interpreting physicians. FDA may also require AMR for extensive violations.