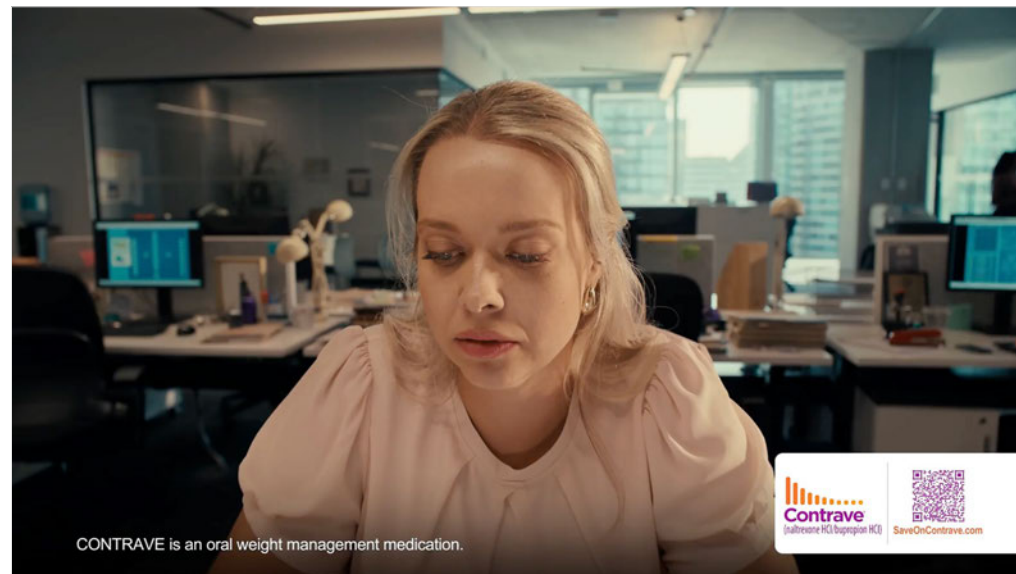


Frame 1

VISUAL: Scene of Woman 1 in a stressful work environment.

AUDIO: Instrumental plays.

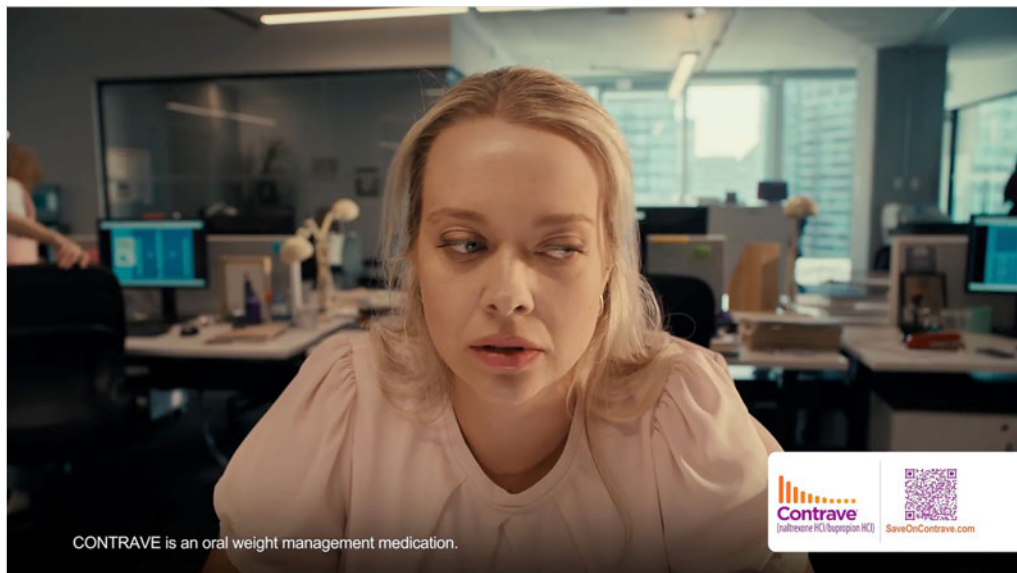
SUPER: CONTRAVE is an oral weight management medication.



Frame 2

VISUAL: Track in on Woman 1.

SUPER: CONTRAVE is an oral weight management medication.

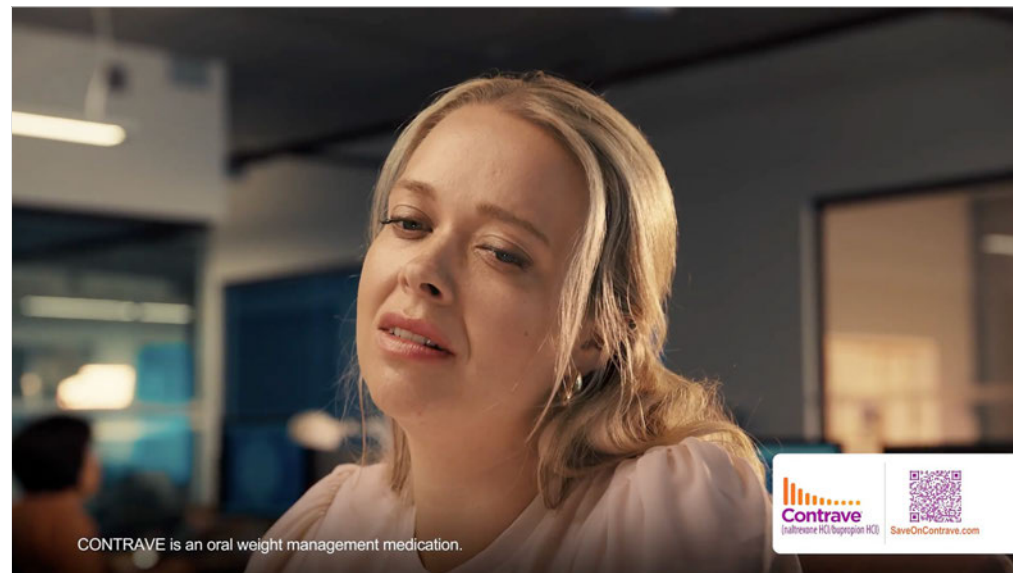


Frame 3

VISUAL: Woman 1, stressed, notices a nearby bag of chips.

AUDIO: Lyrics start: "You don't own me..."

SUPER: CONTRAVE is an oral weight management medication.



Frame 4

VISUAL: Zoom in on Woman 1. She stares at a nearby bag of chips.

SUPER: CONTRAVE is an oral weight management medication.

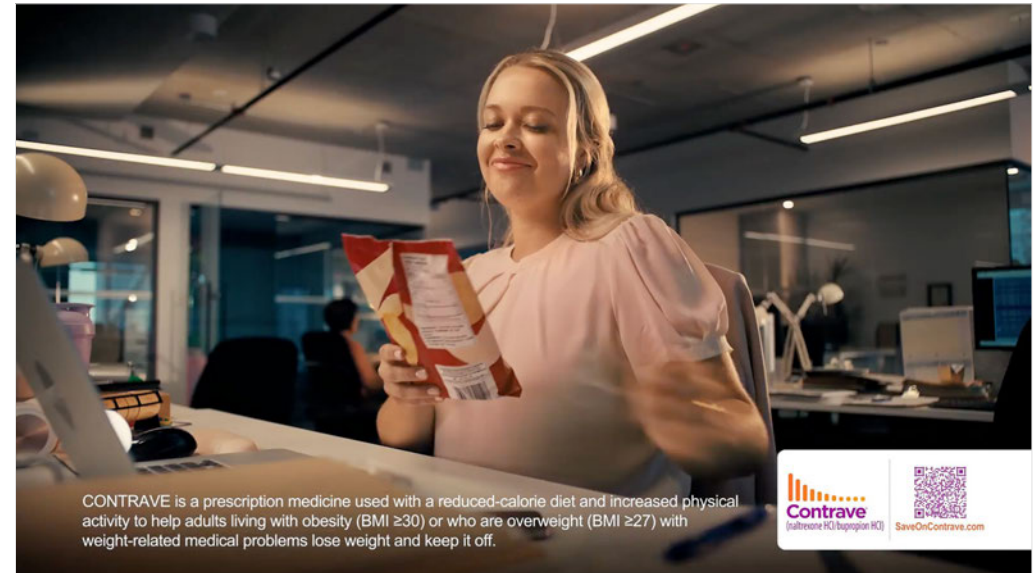


Frame 5

VISUAL: Close-up on bag of chips.

AUDIO: Lyrics continue: "CONTRACE helps keep those cravings away."

SUPER: CONTRACE is a prescription medicine used with a reduced-calorie diet and increased physical activity to help adults living with obesity (BMI ≥ 30) or who are overweight (BMI ≥ 27) with weight-related medical problems lose weight and keep it off.

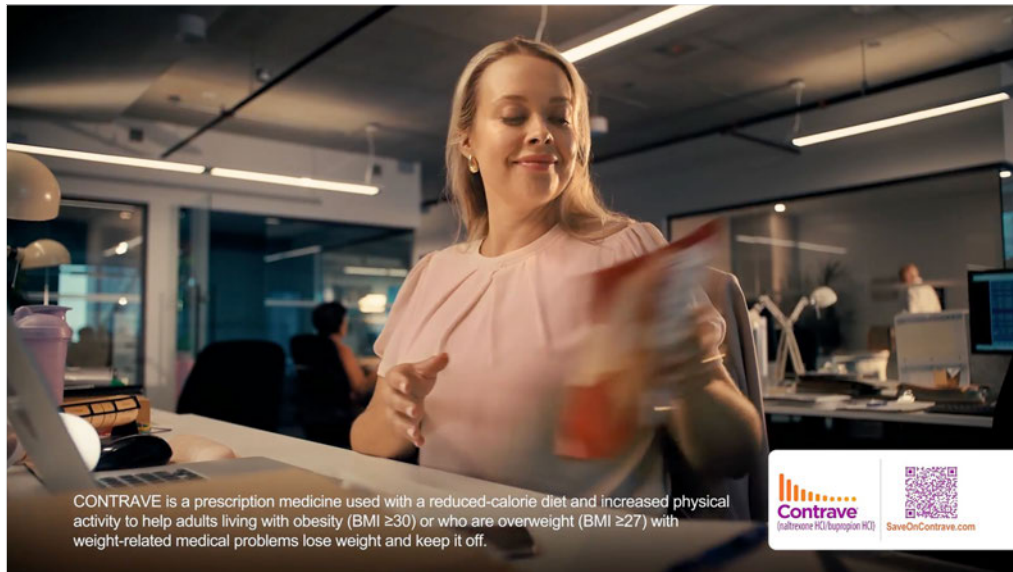


Frame 6

VISUAL: Woman 1 smirks at the bag defiantly.

AUDIO: Music continues.

SUPER: CONTRACE is a prescription medicine used with a reduced-calorie diet and increased physical activity to help adults living with obesity (BMI ≥ 30) or who are overweight (BMI ≥ 27) with weight-related medical problems lose weight and keep it off.



Frame 7

VISUAL: Woman 1 picks up the bag of chips and drops them into her desk.

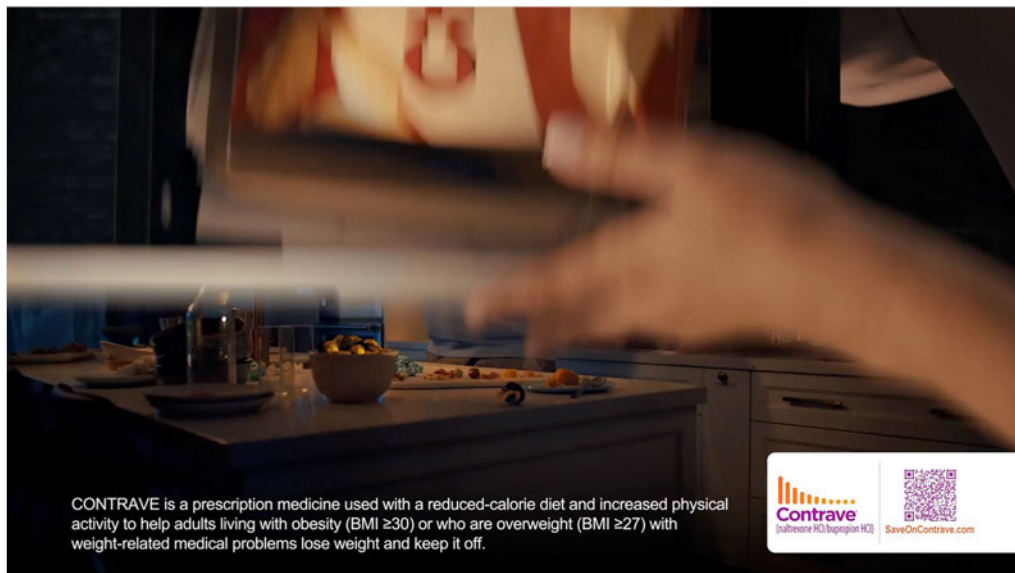
SUPER: CONTRAVE is a prescription medicine used with a reduced-calorie diet and increased physical activity to help adults living with obesity (BMI ≥ 30) or who are overweight (BMI ≥ 27) with weight-related medical problems lose weight and keep it off.



Frame 8

VISUAL: Woman 1 closes desk drawer.

SUPER: CONTRAVE is a prescription medicine used with a reduced-calorie diet and increased physical activity to help adults living with obesity (BMI ≥ 30) or who are overweight (BMI ≥ 27) with weight-related medical problems lose weight and keep it off.



Frame 9

VISUAL: Closing of the drawer reveals new scene of Man at home.

SUPER: CONTRAVE is a prescription medicine used with a reduced-calorie diet and increased physical activity to help adults living with obesity (BMI ≥ 30) or who are overweight (BMI ≥ 27) with weight-related medical problems lose weight and keep it off.

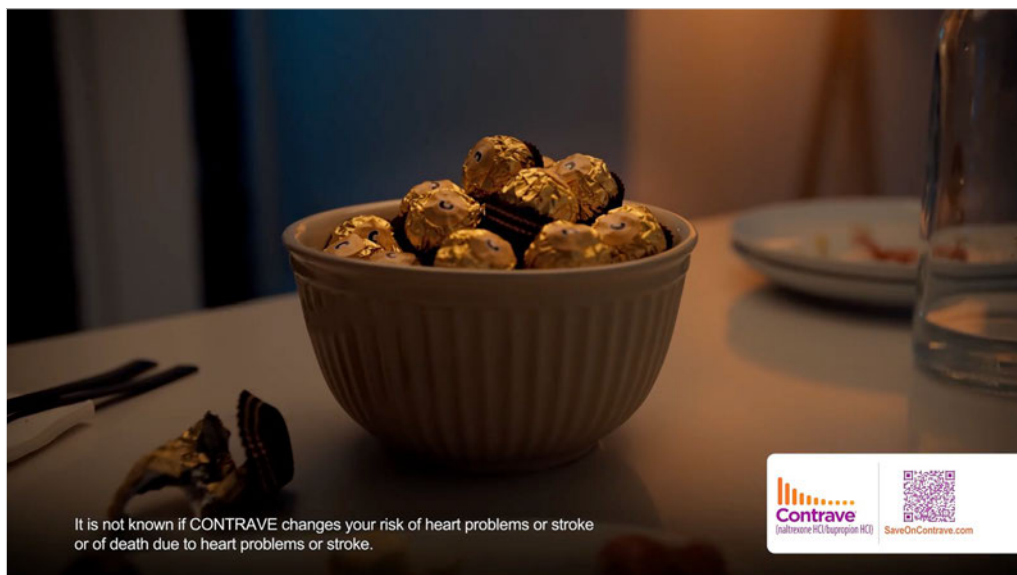


Frame 10

VISUAL: Man's eyes glance over.

AVO: "Is it hard to lose weight..."

SUPER: CONTRAVE is a prescription medicine used with a reduced-calorie diet and increased physical activity to help adults living with obesity (BMI ≥ 30) or who are overweight (BMI ≥ 27) with weight-related medical problems lose weight and keep it off.

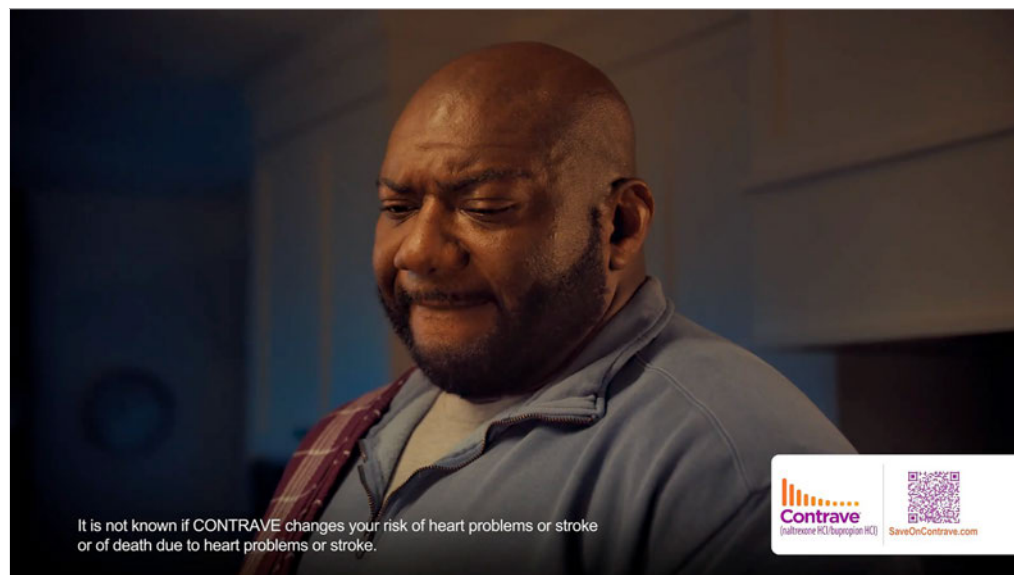


Frame 11

VISUAL: Camera tracks in on the bowl of chocolates.

AVO: "...because it can be difficult to control cravings?"

SUPER: It is not known if CONTRAVE changes your risk of heart problems or stroke or of death due to heart problems or stroke.



Frame 12

VISUAL: Man shakes his head.

AVO: "CONTRACE is an FDA-approved..."

SUPER: It is not known if CONTRAVE changes your risk of heart problems or stroke or of death due to heart problems or stroke.



Frame 13

VISUAL: Track in on Man pouring the chocolates back into their original bag.

AVO: "...oral medicine that may..."

SUPER: It is not known if CONTRAVE changes your risk of heart problems or stroke or of death due to heart problems or stroke.



Frame 14

VISUAL: Cut to Man opening cabinet.

AVO: "...help adults..."

SUPER: CONTRAVE has not been studied with other weight-loss products.



Frame 15

VISUAL: Man places the chocolates in the cabinet and closes the door.

AVO: "...who are overweight..."

SUPER: CONTRAVE has not been studied with other weight-loss products.



Frame 16

VISUAL: Woman 2 approaches mess her children made.

AVO: "...or living with obesity..."

SUPER: CONTRAVE has not been studied with other weight-loss products.



Frame 17

VISUAL: Woman 2 begins cleaning up the mess.

AVO: "...lose weight..."

SUPER: CONTRAVE has not been studied with other weight-loss products.

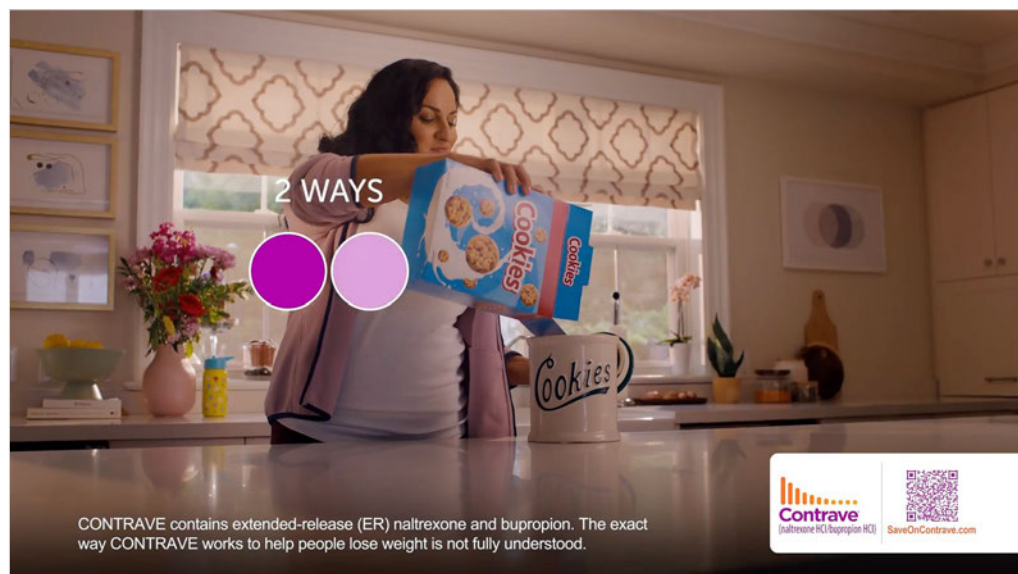


Frame 18

VISUAL: Woman 2 looks at a box of cookies for a moment.

AVO: "...and keep it off."

SUPER: CONTRAVE has not been studied with other weight-loss products.



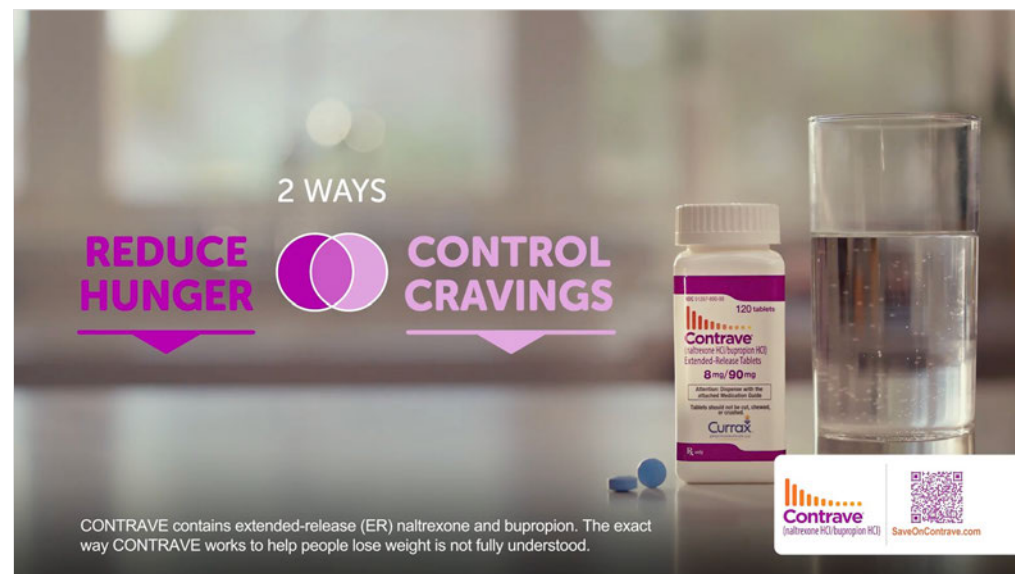
Frame 19

VISUAL: Woman 2 pours the cookies into a cookie jar.

AVO: "It is designed to work in 2 ways..."

ON-SCREEN TEXT: 2 Ways

SUPER: CONTRAVE contains extended-release (ER) naltrexone and bupropion. The exact way CONTRAVE works to help people lose weight is not fully understood.



Frame 20

Reveal CONTRAVE bottle and pills next to glass of water on countertop.

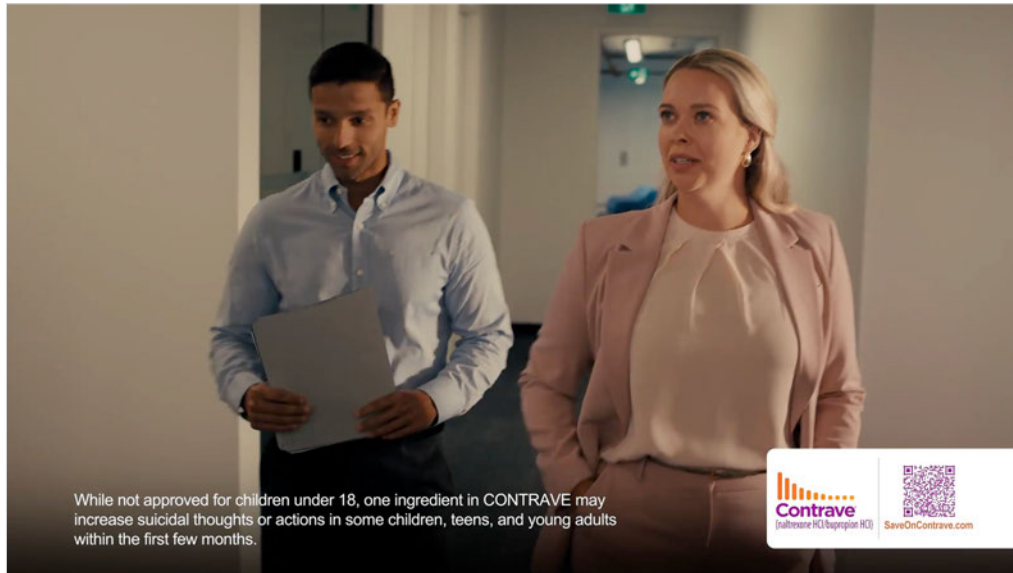
AVO: "...to help reduce hunger and control cravings."

ON-SCREEN TEXT: 2 Ways

Reduce Hunger

Control Cravings

SUPER: CONTRAVE contains extended-release (ER) naltrexone and bupropion. The exact way CONTRAVE works to help people lose weight is not fully understood.



Frame 21

VISUAL: Woman 1 is walking alongside her coworker.

AVO: "While not approved for children under 18, one ingredient in CONTRAVE may increase suicidal thoughts or actions in some children, teens, and young adults within the first few months."

SUPER: While not approved for children under 18, one ingredient in CONTRAVE may increase suicidal thoughts or actions in some children, teens, and young adults within the first few months.

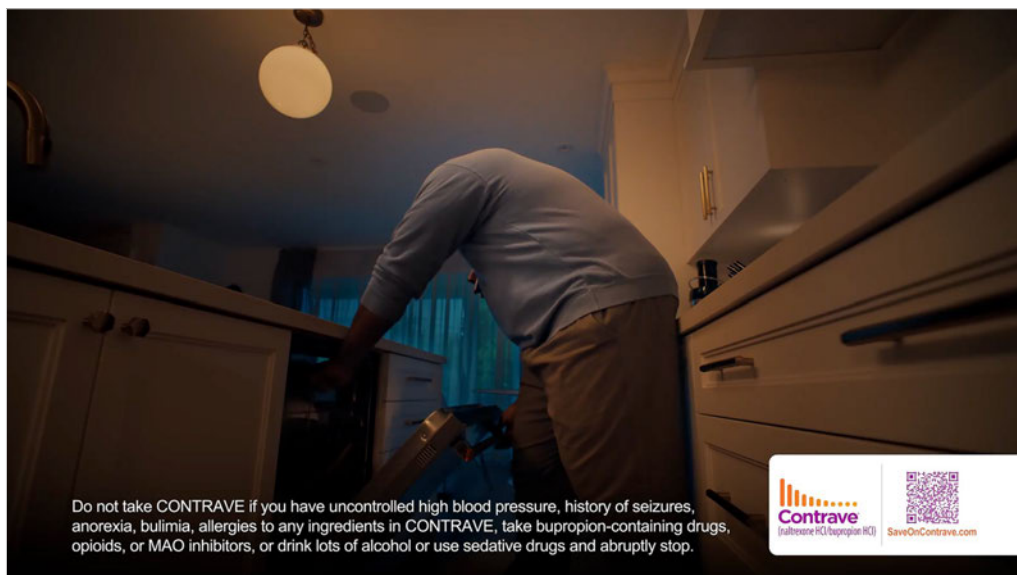


Frame 22

VISUAL: Close-up of Woman 1 walking down hall.

AVO: "Call a doctor right away if any unusual changes in mood, behaviors, thoughts, or feelings occur."

SUPER: Call a doctor right away if any unusual changes in mood, behaviors, thoughts, or feelings occur.

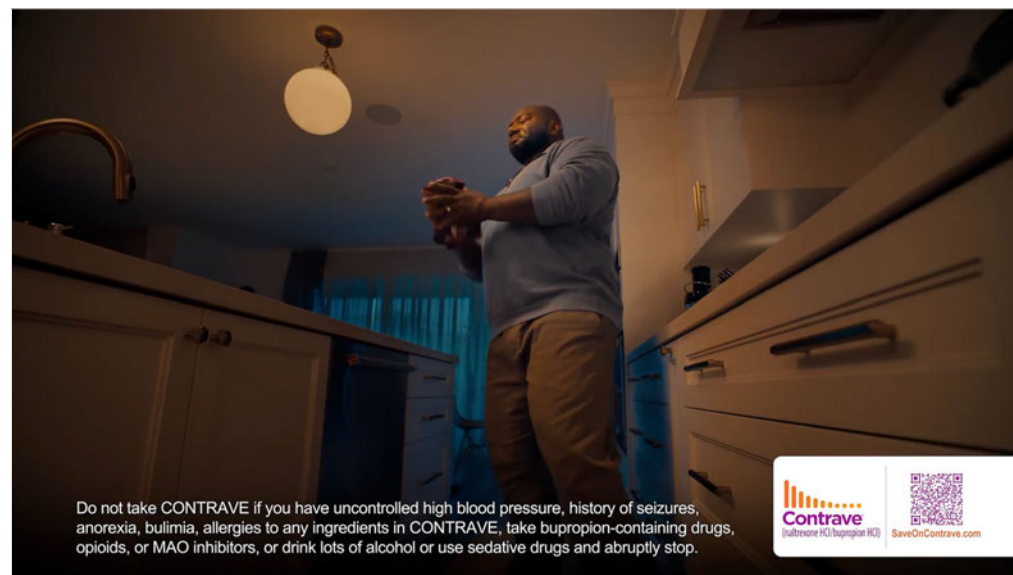


Frame 23

VISUAL: Man has finished cleaning his kitchen. He begins to close his dishwasher.

AVO: "Do not take CONTRAVE if you have uncontrolled high blood pressure, history of seizures, anorexia, bulimia..."

SUPER: Do not take CONTRAVE if you have uncontrolled high blood pressure, history of seizures, anorexia, bulimia, allergies to any of the ingredients in CONTRAVE, take bupropion-containing drugs, opioids, or MAO inhibitors, or drink lots of alcohol or use sedative drugs and abruptly stop.

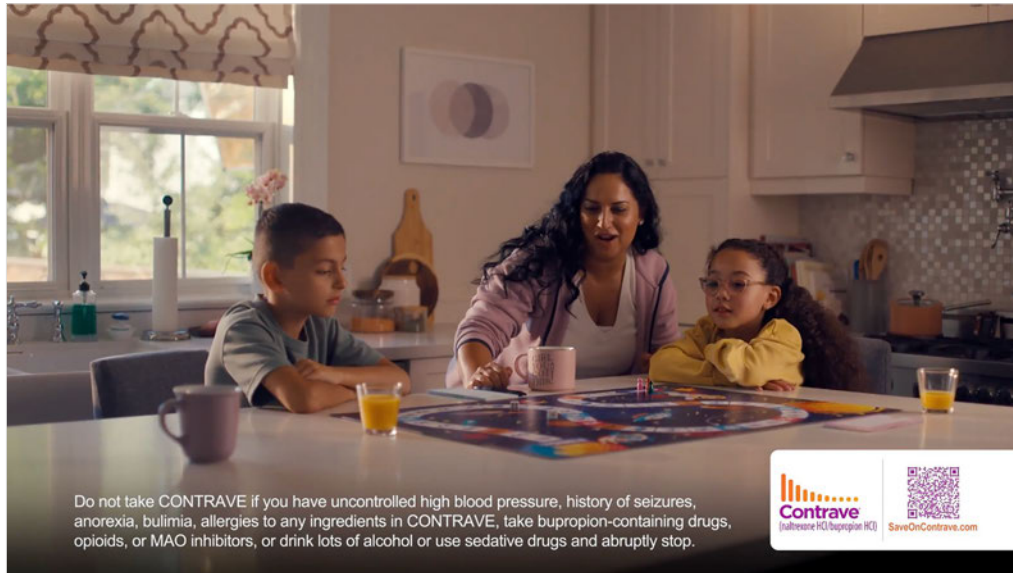


Frame 24

VISUAL: Man closes the dishwasher and dries his hands with a towel.

AVO: "...allergies to any ingredients in CONTRAVE..."

SUPER: Do not take CONTRAVE if you have uncontrolled high blood pressure, history of seizures, anorexia, bulimia, allergies to any of the ingredients in CONTRAVE, take bupropion-containing drugs, opioids, or MAO inhibitors, or drink lots of alcohol or use sedative drugs and abruptly stop.

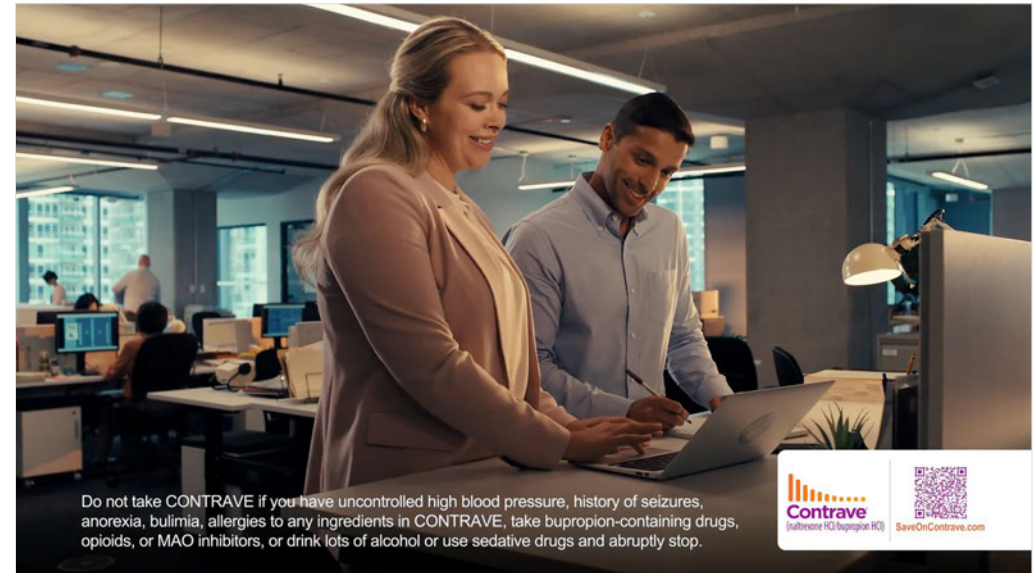


Frame 25

VISUAL: Woman 2 is playing a board game with her children.

AVO: "...take bupropion-containing drugs, opioids, or MAO inhibitors,..."

SUPER: Do not take CONTRAVE if you have uncontrolled high blood pressure, history of seizures, anorexia, bulimia, allergies to any of the ingredients in CONTRAVE, take bupropion-containing drugs, opioids, or MAO inhibitors, or drink lots of alcohol or use sedative drugs and abruptly stop.

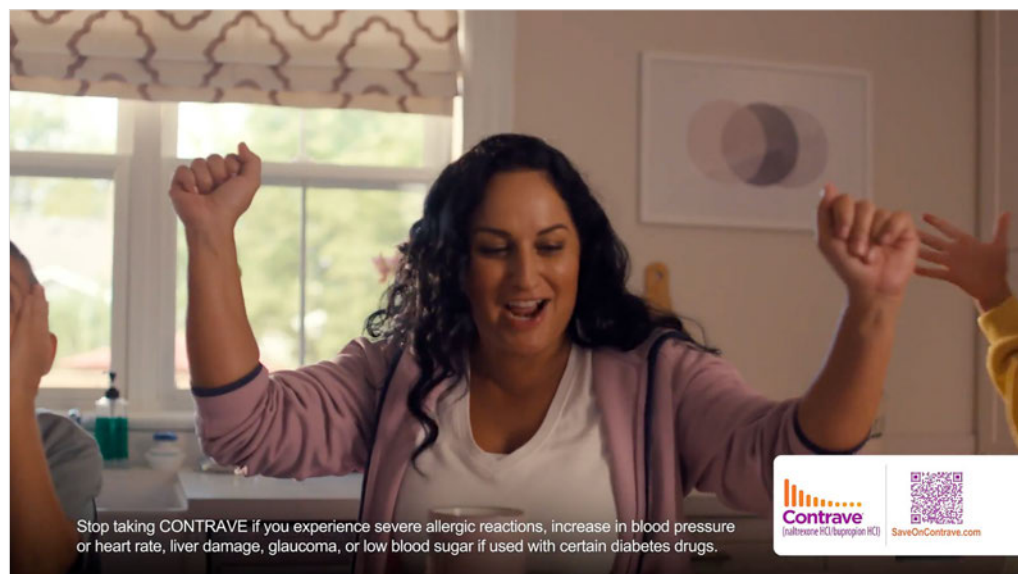


Frame 26

VISUAL: Woman 1 is working on a project with a coworker.

AVO: "...or drink lots of alcohol or use sedative drugs and abruptly stop. Stop taking CONTRAVE..."

SUPER: Do not take CONTRAVE if you have uncontrolled high blood pressure, history of seizures, anorexia, bulimia, allergies to any of the ingredients in CONTRAVE, take bupropion-containing drugs, opioids, or MAO inhibitors, or drink lots of alcohol or use sedative drugs and abruptly stop.



Frame 29

VISUAL: Woman 2 cheers while playing with her children.

AVO: "...or low blood sugar if used with certain diabetes drugs."

SUPER: Stop taking CONTRAVE if you experience: severe allergic reactions, increase in blood pressure or heart rate, liver damage, glaucoma, or low blood sugar if used with certain diabetes drugs.



Frame 30

VISUAL: Fade to the end card with CONTRAVE logo, pill and bottle, and CTA with QR code.

AVO: "Visit SaveOnContrave.com."

ON-SCREEN TEXT: Visit SaveOnContrave.com to find ways to save.

For more information, ask your doctor, visit SaveOnContrave.com, or call 1-800-930-1802.

SUPER: CONTRAVE® is a registered trademark of Currax Pharmaceuticals LLC. © 2025 Currax Pharmaceuticals LLC.