

FDA Staff Manual Guides, Volume I – Organizations and Functions

Department of Health and Human Services

Food and Drug Administration

Center for Devices and Radiological Health

Office of Strategic Partnerships and Technology Innovation

Office of Supply Chain Resilience

Effective: August 8, 2023

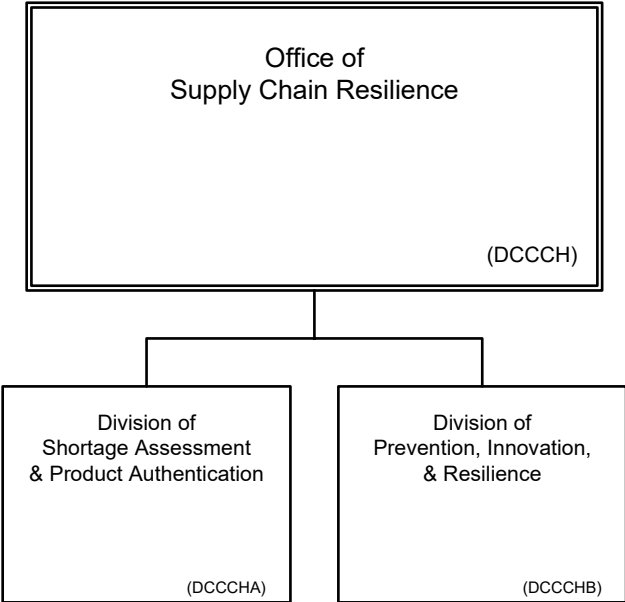
1. Office of Supply Chain Resilience (DCCCH).

- A. Leads the Center for Devices and Radiological Health (CDRH) efforts to enhance, foster, and sustain resiliency in global medical device supply chains through prevention, mitigation, preparedness, collaborations, and engagement.
- B. Provides leadership and coordination for the Center for Devices and Radiological Health activities to strengthen medical device supply chains through proactively monitoring, assessing, and communicating risks and vulnerabilities to promote availability of safe and effective medical devices.
- C. Leads and coordinates integrated approaches for advancing regulatory and policy decisions impacting medical device supply chain resiliency.
- D. Leads and fosters interagency and U.S. Government efforts to enhance medical device supply chain resiliency through coordinated planning, intervention, and response.
- E. Develops, establishes, and fosters strategic partnerships with key U.S. Government, international, and non-governmental stakeholders across the medical device ecosystem to enhance prevention, communication, and coordination and strengthen resiliency.

2. Authority and Effective Date.

The functional statements for the Office of Supply Chain Resilience were approved by the Secretary of Health and Human Services on June 27, 2023, and effective on August 8, 2023.

**Department of Health and Human Services
Food and Drug Administration
Center for Devices and Radiological Health
Office of Strategic Partnerships and Technology Innovation
Office of Supply Chain Resilience**



Staff Manual Guide 1251.28a
Organizations and Functions
Effective Date: August 8, 2023

The following is the Department of Health and Human Services, Food and Drug Administration, Center for Devices and Radiological Health, Office of Strategic Partnerships and Technology Innovation, Office of Supply Chain Resilience organization structure depicting all the organizational structures reporting to the Director:

Office of Supply Chain Resilience (DCCCH)
Division of Shortage Assessment and Product Authentication (DCCCHA)
Division of Prevention, Innovation, and Resilience (DCCCHB)