

SMG 1122A.33

FDA Staff Manual Guides, Volume I – Organizations and Functions

Department of Health and Human Services

Food and Drug Administration

Office of Inspections and Investigations

Office of Import Operations

Division of Analysis and Program Evaluation

Effective Date: May 13, 2024

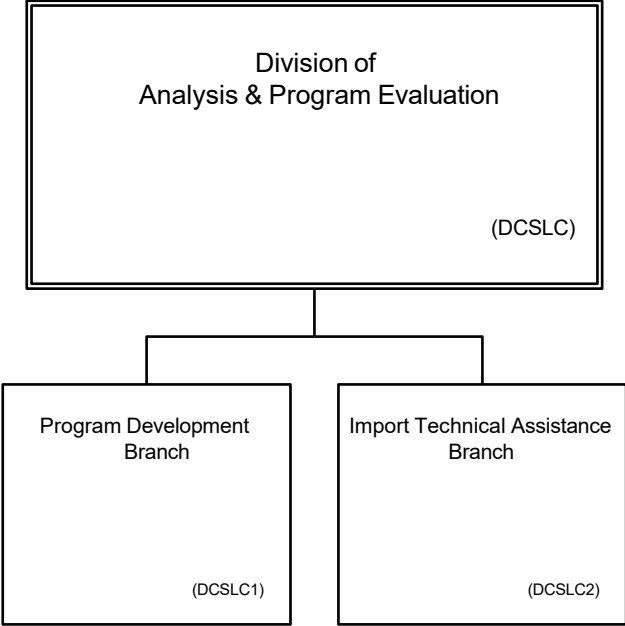
- 1. Division of Analysis and Program Evaluation (DCSLC).**
 - A. Serves as the Food and Drug Administration (FDA) focal point for all import program development analysis and evaluation.
 - B. Serves as the liaison to other Federal Agencies and foreign governments related to FDA's import operations.
 - C. Coordinates with Import Operations to streamline operational procedures to accommodate various modes of entry via U.S. ports.
- 2. Program Development Branch (DCSLC1).**
 - A. Supports the development and review of import policies and work planning.
 - B. Supports the design and evaluation of information technology (IT) systems relative to Office of Inspections and Investigations (OI) import operations and programs.
 - C. Establishes processes and procedures relative to import activities.
 - D. Coordinates business process improvements relative to import operations.
- 3. Import Technical Assistance Branch (DCSLC2).**
 - A. Measures and monitors adherence to national import policies and procedures.

B. Identifies and provides input into import training needs and, as subject matter experts, participates in the design, implementation, and presentation of training programs.

4. Authority and Effective Date.

The functional statements for the Division of Analysis and Program Evaluation were approved by the Secretary for Health and Human Services on March 5, 2024, and effective on May 13, 2024.

**Department of Health and Human Services
Food and Drug Administration
Office of Inspections and Investigations
Office of Import Operations
Division of Analysis and Program Evaluation**



Staff Manual Guide 1122A.33

Organizations and Functions

Effective Date: May 13, 2024

The following is the Department of Health and Human Services, Food and Drug Administration, Office of Inspections and Investigations, Office of Import Operations, Division of Analysis and Program Evaluation organization structure depicting all the organizational structures reporting to the Director:

Program Development Branch (DCSLC1)

Import Technical Assistance Branch (DCSLC2)