

SMG 1121A.75

FDA Staff Manual Guides, Volume I – Organizations and Functions

Department of Health and Human Services

Food and Drug Administration

Office of Inspections and Investigations

Office of Criminal Investigations

Miami Field Office

Effective Date: May 13, 2024

1. Miami Field Office (DCSGE).

- A. Initiates, directs, plans, develops, and conducts criminal investigations activities under all statutes enforced by the Food and Drug Administration (FDA).
- B. Ensures coordination of criminal investigative activities with FDA's field offices, and other FDA units as appropriate including the need for participation of FDA field office personnel in criminal investigative activities. Maintains cooperative relationships with field and headquarters components.
- C. Coordinates and maintains liaison on criminal investigative activities with other federal, State, and local law enforcement agencies as appropriate.
- D. Evaluates findings of a criminal investigation and determines appropriate follow-up.
- E. Coordinates and implements FDA policy related to criminal investigations, in consultation with the Office of the Chief Counsel (OCC) as needed.
- F. Provides investigational support to the Office of Criminal Investigations (OCI) headquarters components and across area offices as needed.
- G. Provides guidance and training regarding criminal investigative techniques, equipment, safety, and security to FDA personnel.
- H. Participates in grand jury investigations and serves as agents of the grand jury.

2. San Juan, PR Resident Unit (DCSGE1).

- A. Initiates, directs, plans, develops, and conducts criminal investigations activities under all statutes enforced by the FDA.
- B. Ensures coordination of criminal investigative activities with FDA's field offices, and other FDA units as appropriate including the need for participation of FDA field office personnel in criminal investigative activities. Maintains cooperative relationships with field and headquarters components.
- C. Coordinates and maintains liaison on criminal investigative activities with other federal, State, and local law enforcement agencies as appropriate.
- D. Evaluates findings of a criminal investigation and determines appropriate follow-up.
- E. Coordinates and implements FDA policy related to criminal investigations, in consultation with OCC as needed.
- F. Provides investigational support to OCI Headquarters components and across area offices as needed.
- G. Provides guidance and training regarding criminal investigative techniques, equipment, safety, and security to FDA personnel.
- H. Participates in grand jury investigations and serves as agents of the grand jury.

3. Atlanta, GA Resident Unit (DCSGE2).

- A. Initiates, directs, plans, develops, and conducts criminal investigations activities under all statutes enforced by the FDA.
- B. Ensures coordination of criminal investigative activities with FDA's field offices, and other FDA units as appropriate including the need for participation of FDA field office personnel in criminal investigative activities. Maintains cooperative relationships with field and headquarters components.
- C. Coordinates and maintains liaison on criminal investigative activities with other federal, State, and local law enforcement agencies as appropriate.
- D. Evaluates findings of a criminal investigation and determines appropriate follow-up.
- E. Coordinates and implements FDA policy related to criminal investigations, in consultation with OCC as needed.

- F. Provides investigational support to OCI Headquarters components and across area offices as needed.
- G. Provides guidance and training regarding criminal investigative techniques, equipment, safety, and security to FDA personnel.
- H. Participates in grand jury investigations and serves as agents of the grand jury.

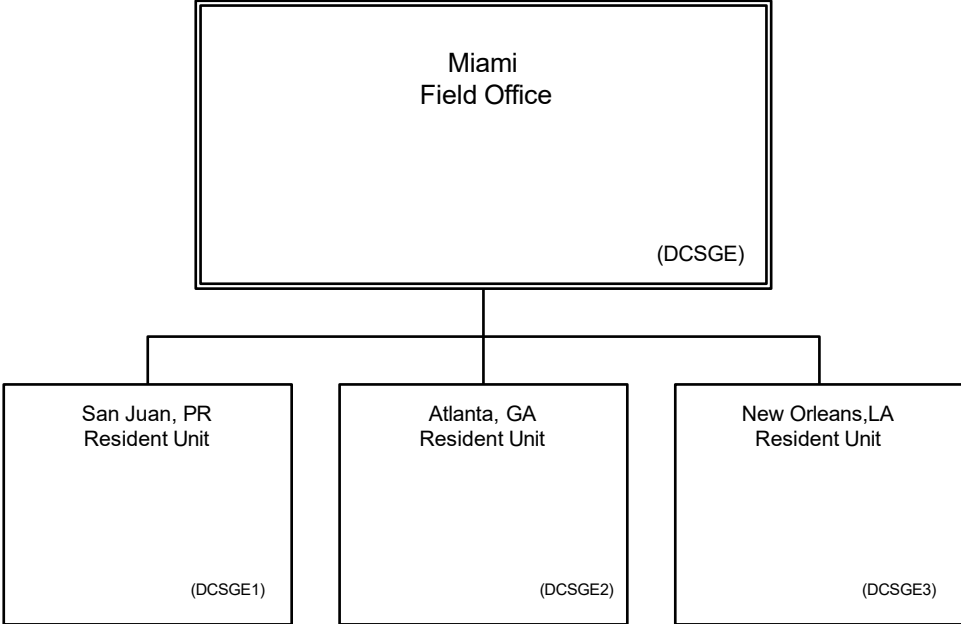
4. New Orleans, LA Resident Unit (DCSGE3).

- A. Initiates, directs, plans, develops, and conducts criminal investigations activities under all statutes enforced by the FDA.
- B. Ensures coordination of criminal investigative activities with FDA's field offices, and other FDA units as appropriate including the need for participation of FDA field office personnel in criminal investigative activities. Maintains cooperative relationships with field and headquarters components.
- C. Coordinates and maintains liaison on criminal investigative activities with other federal, State, and local law enforcement agencies as appropriate.
- D. Evaluates findings of a criminal investigation and determines appropriate follow-up.
- E. Coordinates and implements FDA policy related to criminal investigations, in consultation with OCC as needed.
- F. Provides investigational support to OCI Headquarters components and across area offices as needed.
- G. Provides guidance and training regarding criminal investigative techniques, equipment, safety, and security to FDA personnel.
- H. Participates in grand jury investigations and serves as agents of the grand jury.

5. Authority and Effective Date.

The functional statements for the Miami Field Office were approved by the Secretary of Health and Human Services on March 5, 2024, and effective on May 13, 2024.

**Department of Health and Human Services
Food and Drug Administration
Office of Inspections and Investigations
Office of Criminal Investigations
Miami Field Office**



Staff Manual Guide 1121A.75

Organizations and Functions

Effective Date: May 13, 2024

The following is the Department of Health and Human Services, Food and Drug Administration, Office of Inspections and Investigations, Office of Criminal Investigations, Miami Field Office organization structure depicting all the organizational structures reporting to the Director:

San Juan, PR Resident Unit (DCSGE1)

Atlanta, GA Resident Unit (DCSGE2)

New Orleans, LA Resident Unit (DCSGE3)