

FDA Staff Manual Guides, Volume I – Organizations and Functions

Department of Health and Human Services

Food and Drug Administration

Center for Biologics Evaluation and Research

Office of Vaccines Research and Review

Division of Clinical and Toxicology Review

Effective Date: August 8, 2023

1. Division of Clinical and Toxicology Review (DCBFE).

- A. Develops and maintains the Office's clinical and toxicology review programs.
- B. Performs clinical and toxicology reviews and recommends appropriate actions on Investigational New Drug Applications (INDs) and IND amendments, Biologics License Applications (BLAs) and BLA supplements, product labeling, meeting packages, and other relevant submissions pertinent to products within the Office's purview.
- C. Provides recommendations on clinical and toxicology programs intended to support IND and BLA submissions.
- D. Contributes to interpretation of clinical and toxicology data submitted in support of INDs and amendments, and BLAs and supplements, including data submitted for post-marketing surveillance.
- E. Develops regulatory policies and documents concerning clinical and toxicology information for products regulated by the Office.
- F. Cooperates with other Food and Drug Administration (FDA) components, governmental, and international organizations, academia, manufacturers, professional societies, patient advocacy groups, and others regarding clinical and toxicology issues related to products regulated by the Office.
- G. Performs clinical and toxicology consultative reviews in response to requests from other FDA components and serves as a source of clinical and toxicology information within the Center on products regulated by the Office.

- H. Evaluates clinical experience and adverse reaction reports related to products regulated by the Office.

2. Clinical Review Branch 1 (DCBFE1).

- A. Performs clinical reviews and recommends appropriate actions on INDs and IND amendments, BLAs and BLA supplements, product labeling, meeting documents, and other relevant submissions pertinent to products within the branch's purview.
- B. Provides recommendations on clinical programs intended to support IND and BLA submissions.
- C. Contributes to interpretation of clinical data submitted in support of INDs and amendments, and BLAs and supplements, including data submitted for post-marketing surveillance.
- D. Cooperates with other FDA components, governmental and international organizations, academia, manufacturers, professional societies, patient advocacy groups, and others regarding clinical issues related to products regulated by the Office.
- E. Performs clinical consultative reviews in response to requests from other FDA components and serves as a source of clinical information within the Center on products regulated by the Office.
- F. Evaluates clinical experience and adverse reaction reports related to products regulated by the Office.

3. Clinical Review Branch 2 (DCBFE2).

- A. Performs clinical reviews and recommends appropriate actions on INDs and IND amendments, BLAs and BLA supplements, product labeling, meeting documents, and other relevant submissions pertinent to products within the branch's purview.
- B. Provides recommendations on clinical programs intended to support IND and BLA submissions.
- C. Contributes to interpretation of clinical data submitted in support of INDs and amendments, and BLAs and supplements, including data submitted for post-marketing surveillance.
- D. Cooperates with other FDA components, governmental and international organizations, academia, manufacturers, professional societies, patient advocacy groups, and others regarding clinical issues related to products regulated by the Office.

- E. Performs clinical consultative reviews in response to requests from other FDA components and serves as a source of clinical information within the Center on products regulated by the Office.
- A. Evaluates clinical experience and adverse reaction reports related to products regulated by the Office.

4. Clinical Review Branch 3 (DCBFE3).

- A. Performs clinical reviews and recommends appropriate actions on INDs and IND amendments, BLAs and BLA supplements, product labeling, meeting documents, and other relevant submissions pertinent to products within the branch's purview.
- B. Provides recommendations on clinical programs intended to support IND and BLA submissions.
- C. Contributes to interpretation of clinical data submitted in support of INDs and amendments, and BLAs and supplements, including data submitted for post-marketing surveillance.
- D. Cooperates with other FDA components, governmental and international organizations, academia, manufacturers, professional societies, patient advocacy groups, and others regarding clinical issues related to products regulated by the Office.
- E. Performs clinical consultative reviews in response to requests from other FDA components and serves as a source of clinical information within the Center on products regulated by the Office.
- F. Evaluates clinical experience and adverse reaction reports related to products regulated by the Office.

5. Toxicology Staff (DCBFE4).

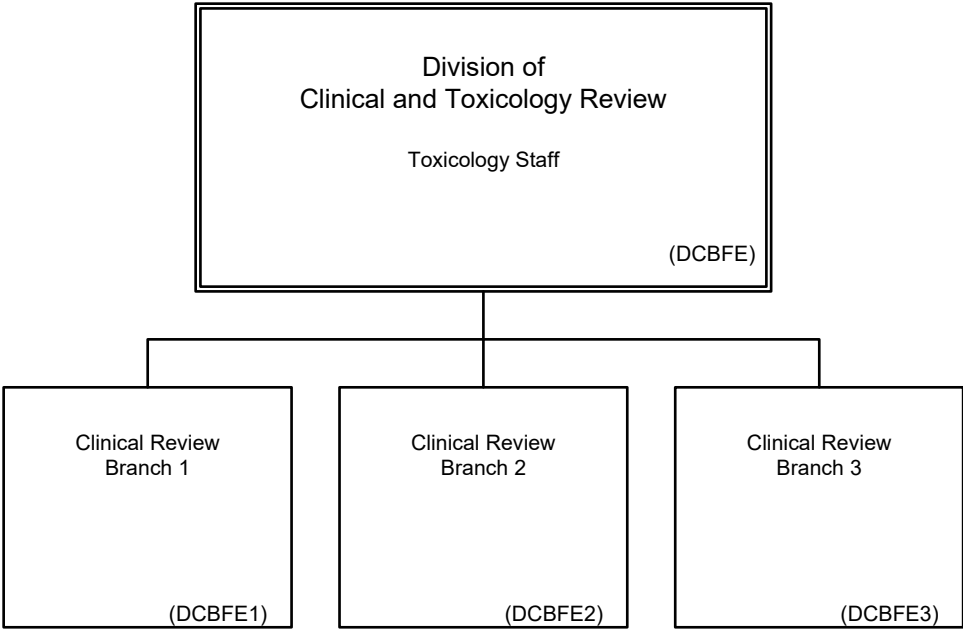
- A. Performs toxicology reviews and recommends appropriate actions on INDs and IND amendments, BLAs and BLA supplements, product labeling, meeting documents, and other relevant submissions pertinent to products within the Staff's purview.
- B. Provides recommendations on toxicology programs intended to support IND and BLA submissions.
- C. Contributes to interpretation of toxicology data submitted in support of INDs and amendments, and BLAs and supplements.

- D. Develops regulatory policies and documents concerning toxicology information for products regulated by the Office.
- E. Cooperates with other FDA components, governmental and international organizations, academia, manufacturers, professional societies, patient advocacy groups, and others regarding toxicology issues related to products regulated by the Office.
- F. Provides toxicology consultative reviews in response to requests from other FDA components and serves as a source of toxicology information within the Center on products regulated by the Office.

6. Authority and Effective Date.

The functional statements for the Division of Clinical and Toxicology Review were approved by the Secretary of Health and Human Services on June 27, 2023, and effective on August 8, 2023.

Department of Health and Human Services
Food and Drug Administration
Center for Biologics Evaluation and Research
Office of Vaccines Research and Review
Division of Clinical and Toxicology Review



Staff Manual Guide 1217.7
Organizations and Functions
Effective Date: August 8, 2023

The following is the Department of Health and Human Services, Food and Drug Administration, Center for Biologics Evaluation and Research, Office of Vaccines Research and Review, Division of Clinical and Toxicology Review organization structure depicting all the organizational structures reporting to the Director:

Division of Clinical and Toxicology Review (DCBFE)
Toxicology Staff
Clinical Review Branch 1 (DCBFE1)
Clinical Review Branch 2 (DCBFE2)
Clinical Review Branch 3 (DCBFE3)