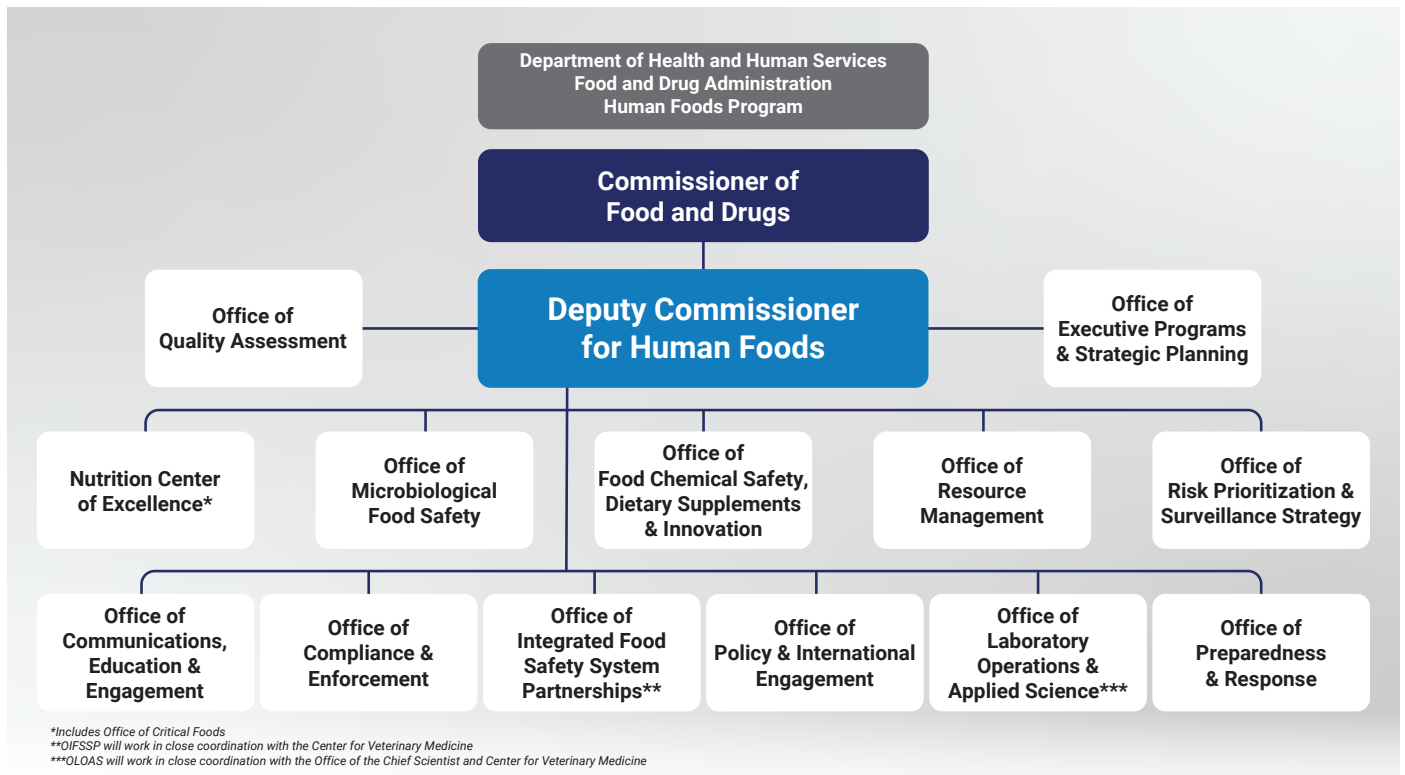




# Proposed Human Foods Program Organization Chart



## Descriptions of proposed HFP offices:

The **Deputy Commissioner for Human Foods** will report directly to the FDA Commissioner and have full authority over all components of the Human Foods Program (HFP), including foods resources in the Office of Regulatory Affairs (ORA). The Deputy Commissioner will be supported by an executive leadership team and will work closely with other FDA executives to ensure priorities are appropriately coordinated and advanced, particularly with a senior official in ORA focused on human-foods related activities and resources and the Director of the Center for Veterinary Medicine (CVM).

## Risk Management Functions: Managing public health risks through three areas of focus

- The **Nutrition Center of Excellence**, which includes the Office of Critical Foods, will work to reduce diet-related chronic diseases, improve health equity, and ensure the safety and nutritional adequacy of infant formula.
- The **Office of Microbiological Food Safety** will work to advance prevention strategies and reduce the burden of pathogen-related foodborne illness.
- The **Office of Food Chemical Safety, Dietary Supplements, and Innovation** will work to modernize and strengthen oversight of food chemical safety, advance dietary supplement safety, and enable the HFP to support and effectively regulate food ingredient innovation.

## Strategic Management Functions: Leveraging data to better prioritize activities and resources based on risk

---

- The **Office of Risk Prioritization and Surveillance Strategy** will oversee the foods establishment inventory, receive and analyze reports of potential food safety or quality problems, analyze trends from surveillance activities, and use all available data to detect risk signals. It will also consolidate risk analyses to enable risk prioritization across the foods program.
- The **Office of Executive Programs and Strategic Planning** will plan and coordinate the activities derived from decisions based on the risk prioritization framework.
- The **Office of Resource Management** will conduct business operations, including human resources and budget.

## Cross-Cutting Functions: Supporting risk management priorities

---

- The **Office of Integrated Food Safety System Partnerships** will coordinate work with state and local regulators and certain aspects of international food safety partnerships to strengthen the Integrated Food Safety System.
- The **Office of Compliance and Enforcement** will carry out compliance and enforcement actions to support the risk management priorities of the HFP.
- The **Office of Preparedness and Response** will ensure that the agency is prepared to respond swiftly and efficiently to food-related outbreaks, such as recalls, and other food-related emergencies.
- The **Office of Communications, Education and Engagement** will engage with stakeholders, including industry and consumer groups, and communicate around food safety and nutrition information and other HFP activities.
- The **Office of Policy and International Engagement** will work on standard-setting and regulatory policy to support the risk management priorities of the HFP and engage with international industry and regulatory counterparts.
- The **Office of Laboratory Operations and Applied Science** will coordinate the analyses, method development and research performed by HFP labs and collaborate with state-operated laboratory partners.
- The **Office of Quality Assessment** will evaluate the effectiveness of HFP programs and processes.