

Individuals using assistive technology may not be able to fully access the information contained in this file. For assistance, please call 800-835-4709 or 240-402-8010, extension 1. CBER Consumer Affairs Branch or send an e-mail to: [ocod@fda.hhs.gov](mailto:ocod@fda.hhs.gov) and include 508 Accommodation and the title of the document in the subject line of your e-mail.



# DoD Influenza Surveillance and Mid-Season Vaccine Effectiveness

Armed Forces Health Surveillance Division (AFHSD)

Naval Health Research Center (NHRC)

Naval Medical Research Center (NMRC)

United States Air Force School of Aerospace Medicine (USAFSAM)

DoD Global Respiratory Pathogen Surveillance Program Partners

Presentation to the Vaccines and Related Biological Products Advisory  
Committee (VRBPAC) – 7 March 2023

**Anthony C. Fries, PhD\*\***

\*\*Representing the DoD CONUS and OCONUS lab-based influenza surveillance activities

# Briefing Outline

---

- **Purpose:** Provide an update to the VRBPAC on DoD influenza surveillance activities for 2022 -2023
  - Program Descriptions
  - Vaccine Effectiveness in DoD Populations
    - ✓ DoD Beneficiaries
    - ✓ DoD Active Duty Service Members
  - DoD Phylogenetic Analyses
  - DoD Antigenic Characterization



# Influenza Surveillance in the DoD

---

- **Global Influenza Surveillance**
  - Approximately 400 locations in over 30 countries
    - ✓ Military; local government/academic
  - Extensive characterization capabilities within the DoD
    - ✓ Culture, PCR, sequencing, serology
  - Rapid sharing of results with CDC and/or regional WHO reference centers
- **Comprehensive Epidemiology and Analysis Capabilities**
  - Over 12 million Active Duty records (health care utilization, immunizations, deployment, reportable diseases, etc.)
    - ✓ Produce Medical Surveillance Monthly Report (MSMR), ad-hoc requests, studies/analyses,
    - ✓ Weekly influenza reports
    - ✓ Vaccine safety and effectiveness studies



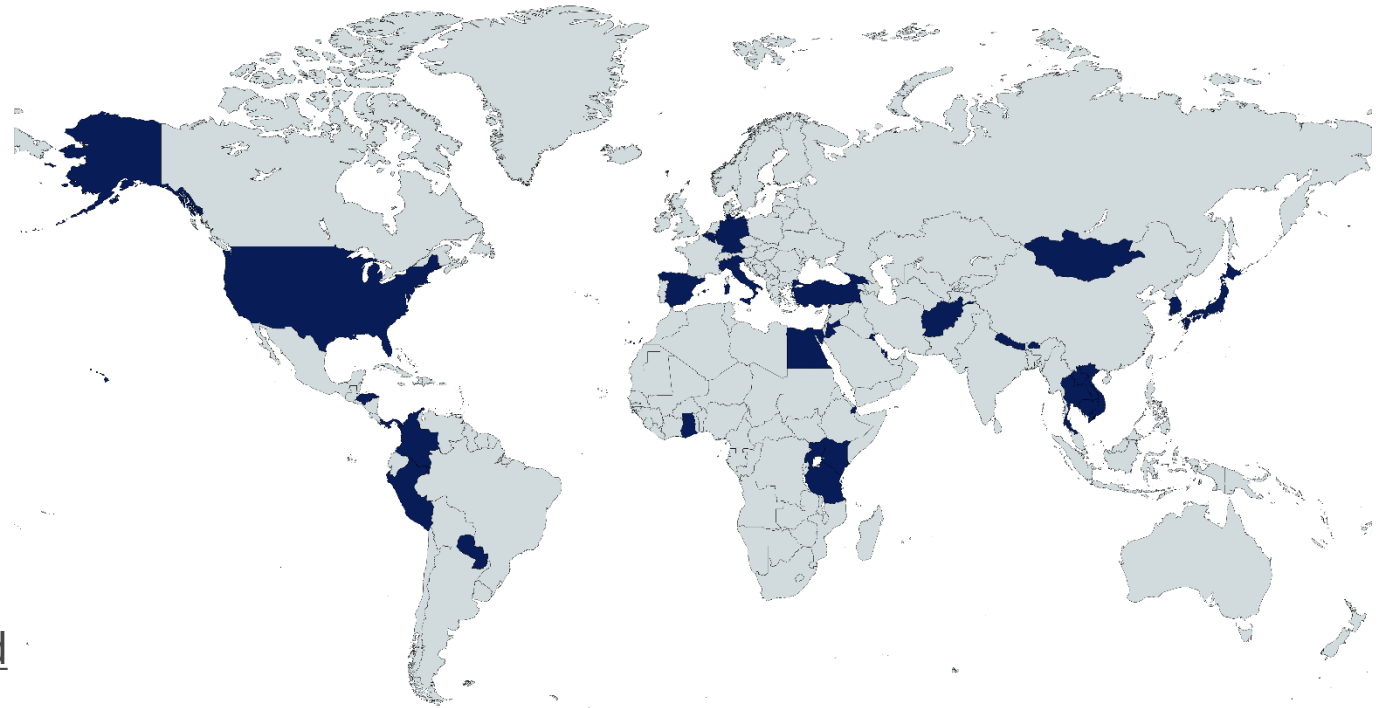
*Improving Health and Building Readiness...Anytime, Anywhere – Always!*



# Influenza Surveillance in the DoD

- The Global Emerging Infections Surveillance (GEIS) partner laboratories form a wide-reaching network across the globe
- Influenza surveillance activities in the DoD complement existing WHO efforts
  - Can surveil in some locations where data does not exist otherwise (Djibouti, Tanzania)
  - Surveil Service members and their beneficiaries, U.S. civilians and foreign national populations
  - DoD Service member population is highly vaccinated and widely distributed across the globe

GEIS-Funded Laboratory Influenza Surveillance Footprint

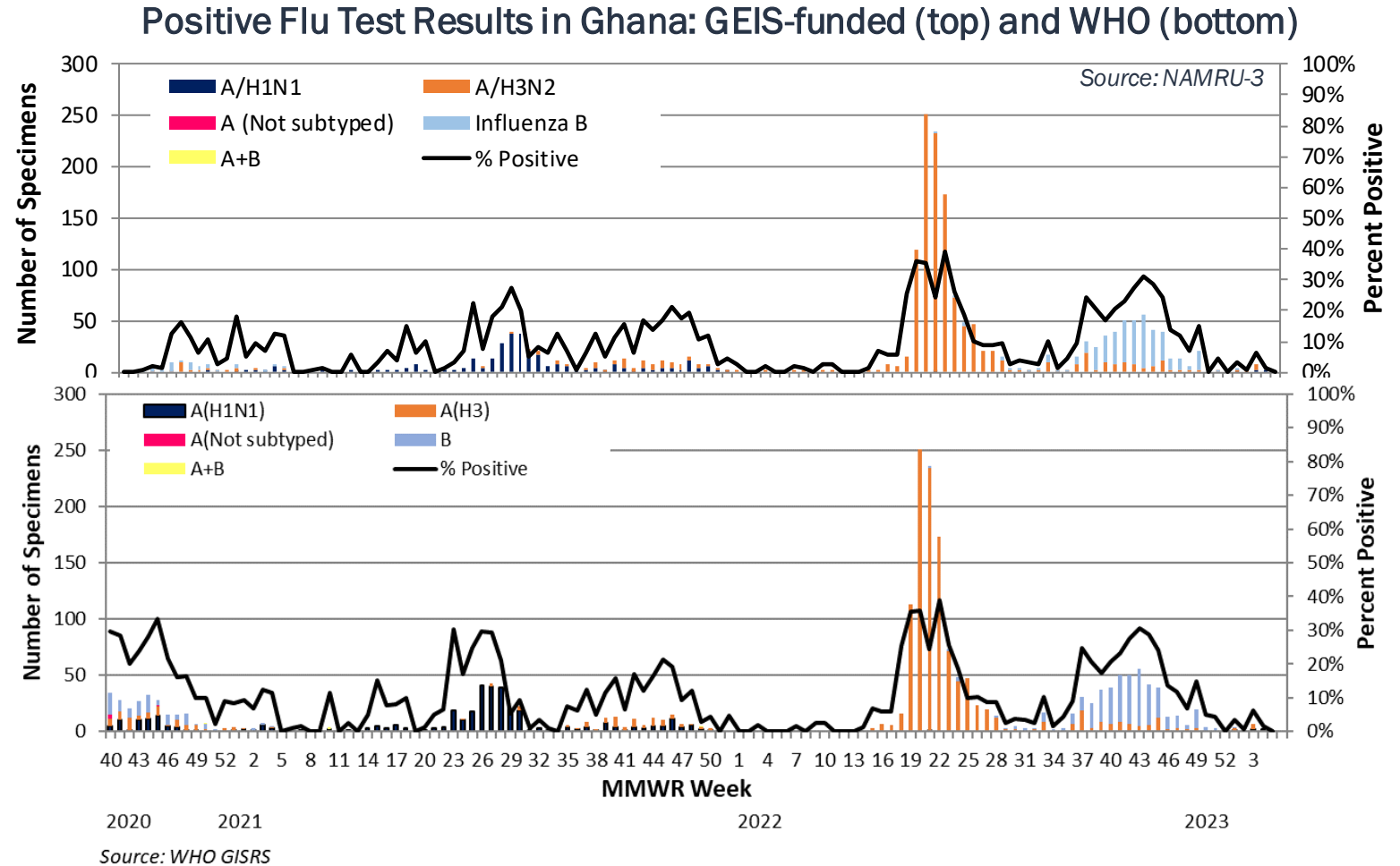


*Improving Health and Building Readiness...Anytime, Anywhere – Always!*



# Influenza Surveillance in the DoD

- Data collected from the GEIS surveillance network typically mirrors what is seen in WHO FluNet and in some cases may be a primary source of data.
- Differences highlight the importance of using this surveillance stream to identify key samples for sequencing and advanced characterization.



*Improving Health and Building Readiness...Anytime, Anywhere – Always!*



# **Vaccine Effectiveness in DoD Populations**

## **Influenza Mid-Season Vaccine Effectiveness Matched Case-Control Study DoD TRICARE Beneficiaries**



*Improving Health and Building Readiness...Anytime, Anywhere – Always!*



# USAFSAM 2022-2023 Mid-Season Influenza VE Analysis

---

- Case, test-negative control study design
  - Population: DoD TRICARE beneficiaries, excluding Service Members
  - VE against medically-attended (outpatient), influenza-like illness (ILI) laboratory-confirmed influenza cases
  - Time period: October 2, 2022 – February 18, 2023 (Weeks 40-07)
- Influenza-like illness case definition:
  - Fever ( $\geq 100.4^{\circ}\text{F}$ ) and cough or
  - Fever ( $\geq 100.4^{\circ}\text{F}$ ) and 2 or more additional symptoms (fatigue, body aches, sore throat, headache, sinus congestion, shortness of breath, chills, runny nose, loss of taste or smell, acute respiratory distress) or
  - Physician diagnosed ILI



*Improving Health and Building Readiness...Anytime, Anywhere – Always!*





# USAFSAM 2022-2023 Mid-Season Influenza VE Analysis

---

- Controls matched to cases by specimen collection time period
  - Matched 1 case to 3 controls in childrens analysis
  - Matched 1 case to 4 controls in dependents, adults, and influenza A(H3N2) analysis
- Analyses by:
  1. Influenza A (overall) **all dependents**
  2. Influenza A (overall) **children** (6mo – 17 years)
  3. Influenza A (overall) **adults** (18-64 years)
  4. Influenza A(H3N2) all dependents

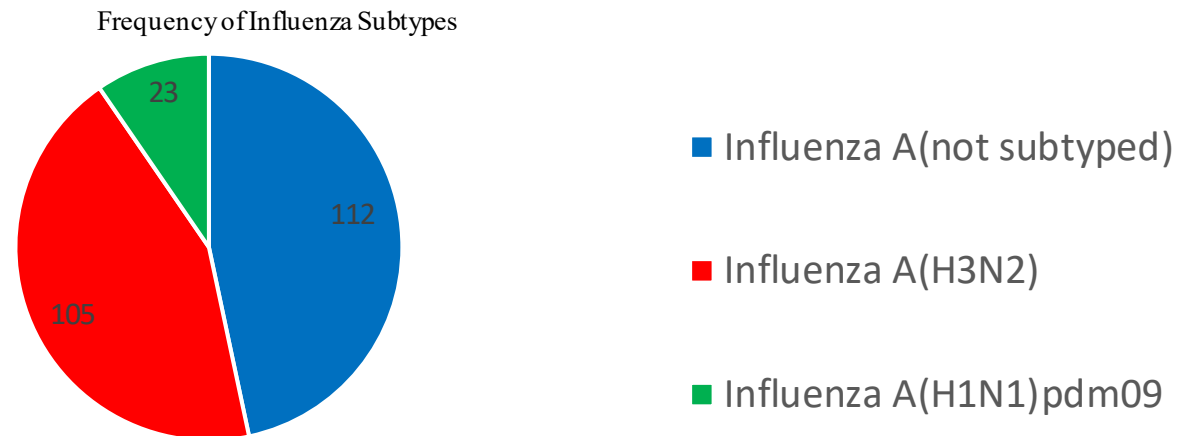
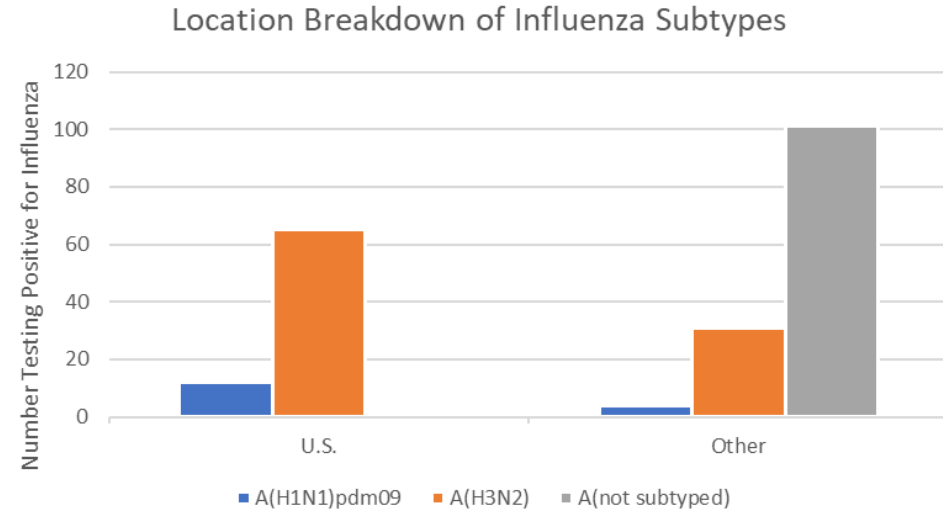


*Improving Health and Building Readiness...Anytime, Anywhere – Always!*



# USAFSAM 2022-2023 Mid-Season Influenza VE Analysis

- Laboratories contributing to analyses:
  - Landstuhl Regional Medical Center (LRMC): n=630 (52%)
  - USAFSAM: n=570 (47%)
- Cases: n=240 (20%)
  - 113 (47%) vaccinated
  - 127 (53%) unvaccinated
- Controls: n=960 (80%)
  - 561 (58%) vaccinated
  - 399 (42%) unvaccinated



*Improving Health and Building Readiness...Anytime, Anywhere – Always!*



# Characteristics of laboratory confirmed influenza (RT-PCR)

Characteristic		Cases n= 240 No. (%)	Controls n= 960 No. (%)	p-Value
Gender				0.5628
	Male	116 (48.33)	444 (46.25)	
	Female	124 (51.66)	516 (53.75)	
Age				<.0001
	0-5	54 (22.50)	350 (36.45)	
	6-9	58 (24.16)	110 (11.45)	
	10-17	65 (27.08)	121 (12.60)	
	18-24	14 (5.833)	101 (10.52)	
	25-44	37 (15.41)	211 (21.97)	
	45-64	12 (5.00 )	67 (6.98)	
Beneficiary Category				<.0001
	Adult (18-64)	63 (26.25)	379 (39.47)	
	Child (0-17)	177 (73.75)	581 (60.52)	
Month of Illness				<.0001
	October	28 (11.66)	218 (22.70)	
	November	71 (29.58)	191 (19.89)	
	December	120 (50.00)	254 (26.45)	
	January	14 (5.833)	201 (20.93)	
	February	7 (2.916)	96 (10.00)	
Geographic Region				0.0012
	Eastern U.S.	47 (19.58)	122 (12.70)	
	Western U.S.	40 (16.66)	249 (25.93)	
	Other	153 (63.75)	589 (61.35)	
Vaccination Status				0.0015
	Vaccinated	113 (47.08)	561 (58.43)	
	Unvaccinated	127 (52.91)	399 (41.56)	
Influenza Status				<.0001
	Influenza A(H1N1)pdm09	23 (9.58)	0 (0)	
	Influenza A(H3N2)	105 (43.75)	0 (0)	
	Influenza A/not subtyped	112 (46.66)	0 (0)	
	Not Influenza	0 (0)	960 (100)	

*Improving Health and Building Readiness...Anytime, Anywhere – Always!*



# USAFSAM 2022-2023 Mid-Season Influenza VE Estimates

Type	Population	Vaccine Status	Cases (%)	Controls (%)	Crude VE (95% CI)	Adjusted VE (95% CI)
Influenza A	Adults	Yes	36 (11)	168 (53)	43 (-11, 71)	44 (-11, 72)
		No	27 (9)	84 (27)		
Influenza A	Children	Yes	77 (11)	275 (39)	40 (9, 61)	45 (13, 65)
		No	100 (14)	256 (36)		
Influenza A	Dependents	Yes	113 (9)	561 (47)	50 (29, 65)	49 (26, 64)
		No	127 (11)	399 (33)		
Influenza A(H3N2)	Dependents	Yes	39 (7)	250 (48)	73 (54, 84)	65 (38, 80)
		No	66 (13)	170 (32)		

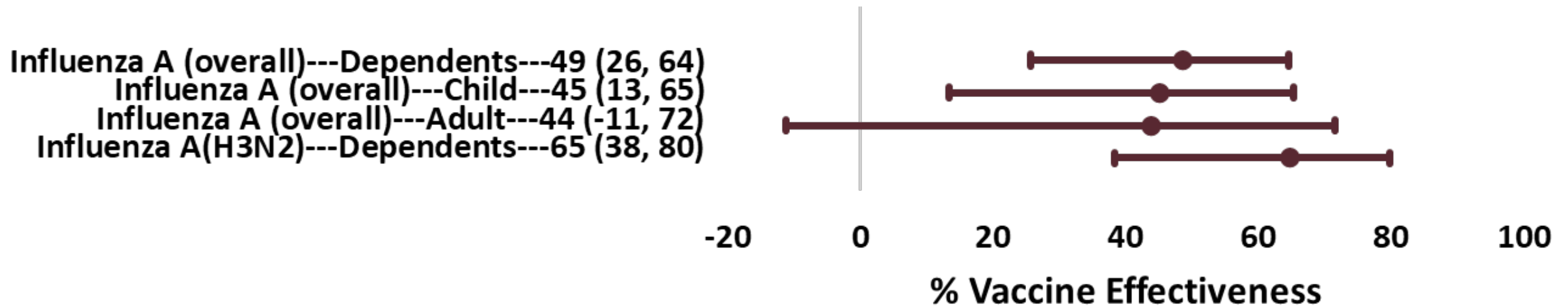
- Notes:
- VE was calculated as  $VE = (1 - \text{odds ratio}) \times 100\%$
- Subjects were considered vaccinated if the vaccine was received at least 14 days prior to specimen collection date
- Controls were matched to cases by specimen collection time period up to the following ratios (Case:Control) : Dependents and Children 1:3, Adults & A(H3N2) 1:4
- Adjusted VE was calculated using conditional multivariable logistic regression and adjusted for 1) age (categorical), 2) Geographic Region (Eastern US, Western US, OCONUS)
- The relative standard error (RSE) is above 30% in the adult (60%) and children (38%) analysis. An RSE above 30% indicates unreliable results and caution should be taken with interpretation of results.
- Children 6 months – 2 years were included in the study and may lead to an underestimation of VE since they may only be partially vaccinated/protected.



*Improving Health and Building Readiness...Anytime, Anywhere – Always!*



# USAFSAM 2022-2023 Mid-Season Influenza VE Estimates



- Overall, influenza A VE was higher among children (45%) than in adults (44%) and was statistically significant (not in adults).
- VE was highest among the A(H3N2) analysis at 65%.
- VE increased in influenza A (overall) children [53% (25, 71)], all dependents [53% (30, 68)], and influenza A(H3N2) [71% (48, 83)] analyses when including children 6 months -2 years of age (18 cases were added).



*Improving Health and Building Readiness...Anytime, Anywhere – Always!*



# **Vaccine Effectiveness in DoD Populations**

## **Influenza Mid-Season Vaccine Effectiveness Matched Case-Control Study U.S. Active Component Service Members**



*Improving Health and Building Readiness...Anytime, Anywhere – Always!*



# U.S. Service Members: Study Design

---

- Case / Test-negative control design
- Population: Active component Service Members
  - Army, Navy, Air Force, Marines
  - CONUS and OCONUS
- Time Period: September 1, 2022 – February 4, 2023
- Lab-confirmed flu cases: positive by rapid, RT-PCR, or culture assays
- Test-negative Controls: negative by RT-PCR or culture assays (subjects with negative rapid excluded)
- Models adjusted for sex, age category, prior vaccination, and month of diagnosis
- Type and subtype-specific VE calculated



*Improving Health and Building Readiness...Anytime, Anywhere – Always!*



# U.S. Service Members: Vaccination Information & Case Subtypes

---

- Vaccination
  - Quadrivalent IIV was the only vaccine type among the study subjects
  - 94% of subjects had prior flu vaccine in previous 5 years
- Cases
  - Influenza A (any subtype) = 4,639
  - Influenza A(H3N2) = 574
  - Influenza A(H1N1) = 73
  - Influenza B = 274
- Sample size too small to calculate inpatient-only VE (only 12 cases)

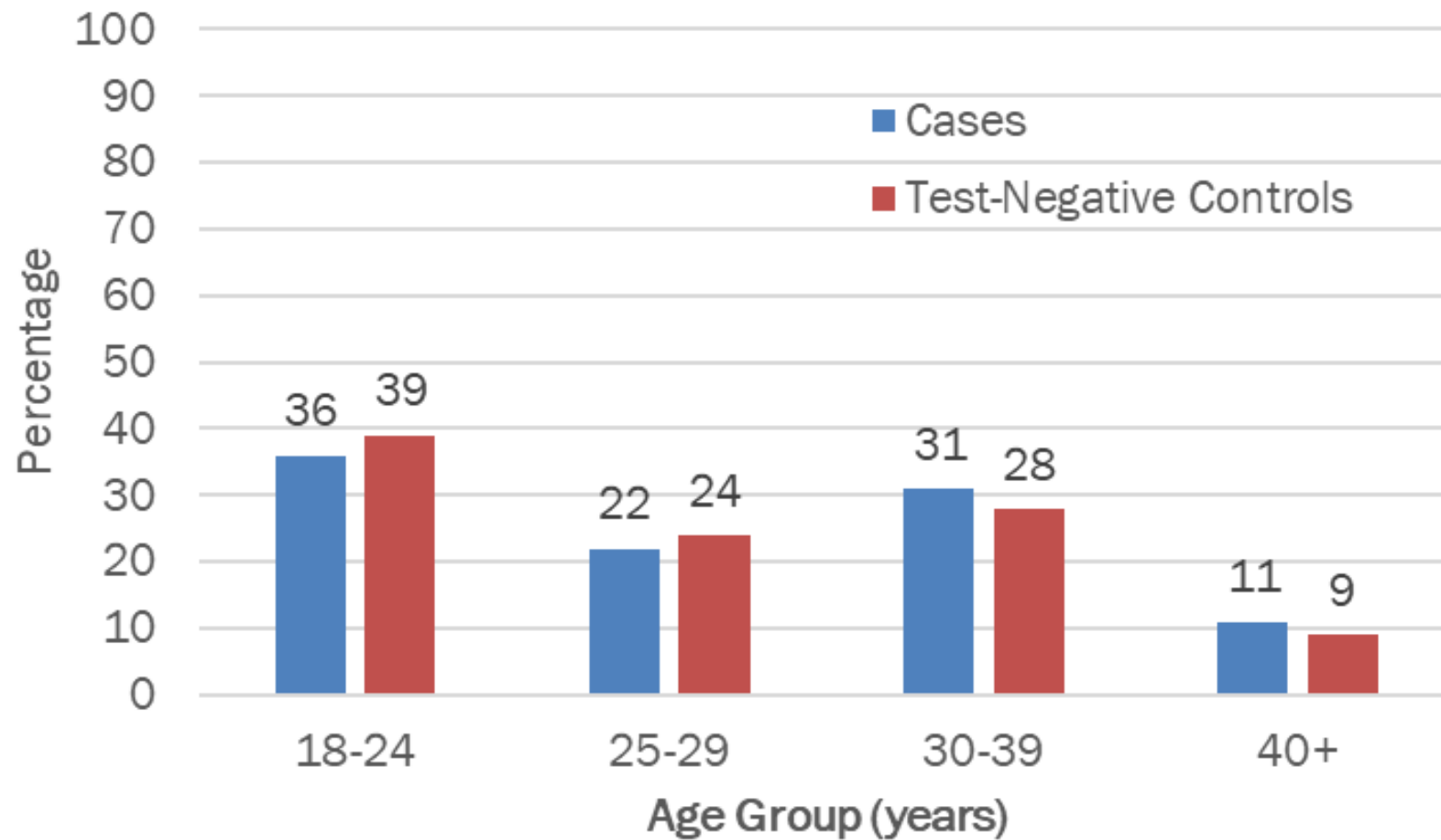


*Improving Health and Building Readiness...Anytime, Anywhere – Always!*





# Cases and Test-Negative Controls: Age Groups



*Improving Health and Building Readiness...Anytime, Anywhere – Always!*



# U.S. Service Members: Interim VE Estimates 2022-2023

Influenza Type	Vaccination Status	Cases N (%)	Controls N (%)	Crude VE (95% CI)	Adjusted VE (95% CI)*
Influenza A	Vaccinated	2,170 (47)	12,639 (54)	25 (20, 30)	35 (30, 40)
	Unvaccinated	2,469 (53)	10,794 (46)		
A/H1N1	Vaccinated	41 (57)	12,639 (54)	-16 (-84, 27)	14 (-46, 49)
	Unvaccinated	31 (43)	10,794 (46)		
A/H3N2	Vaccinated	170 (30)	12,639 (54)	64 (57, 70)	64 (55, 70)
	Unvaccinated	404 (70)	10,794 (46)		
Influenza B	Vaccinated	155 (57)	12,639 (54)	-11 (-41, 13)	21 (-6, 40)
	Unvaccinated	119 (43)	10,794 (46)		

\*Adjusted for sex, age category, 5-year prior vaccination (Y/N), and month of diagnosis



*Improving Health and Building Readiness...Anytime, Anywhere – Always!*



# U. S. Service Members: Interim VE Summary

---

- The 2022-2023 Influenza vaccine provided:
  - Low protection against Influenza A (35%)
  - Moderate protection against Influenza A/H3N2 (64%)
  - Low protection against Influenza B (21%): non-significant
- ✓ Note: Moderate protection (54%) was found against hospitalized influenza A in a cohort designed study.



*Improving Health and Building Readiness...Anytime, Anywhere – Always!*



# DoD Phylogenetic Analyses



*Improving Health and Building Readiness...Anytime, Anywhere – Always!*



# DoD Phylogenetic Analyses

---

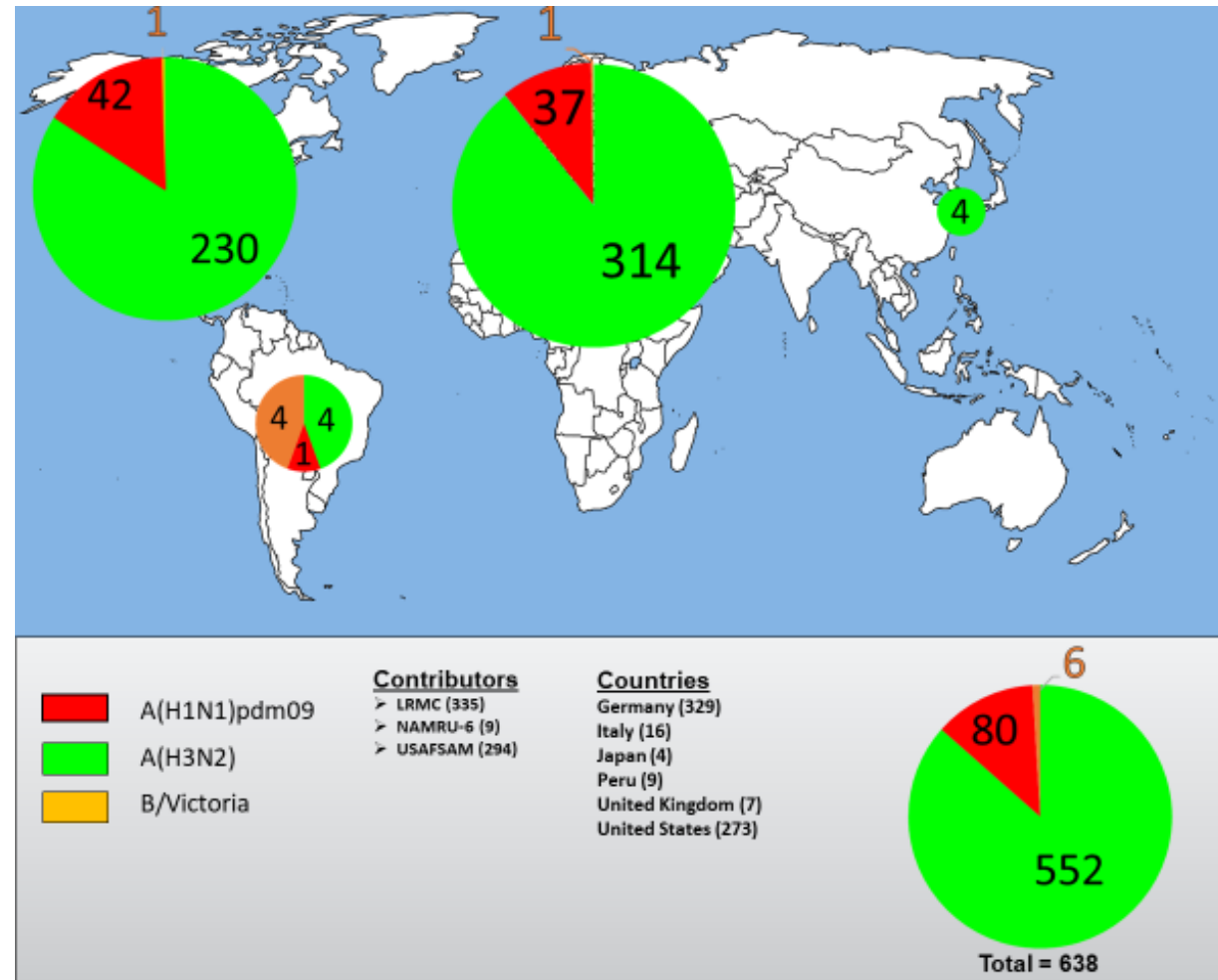
- Geographical distribution of all influenza viruses characterized for the DoD
- Influenza A(H1N1)pdm09 clade proportions and phylogeny
- Influenza A(H3N2) clade proportions and phylogeny
- Influenza B phylogeny



*Improving Health and Building Readiness...Anytime, Anywhere – Always!*



# Geographical Distribution of 2022-2023 Influenza

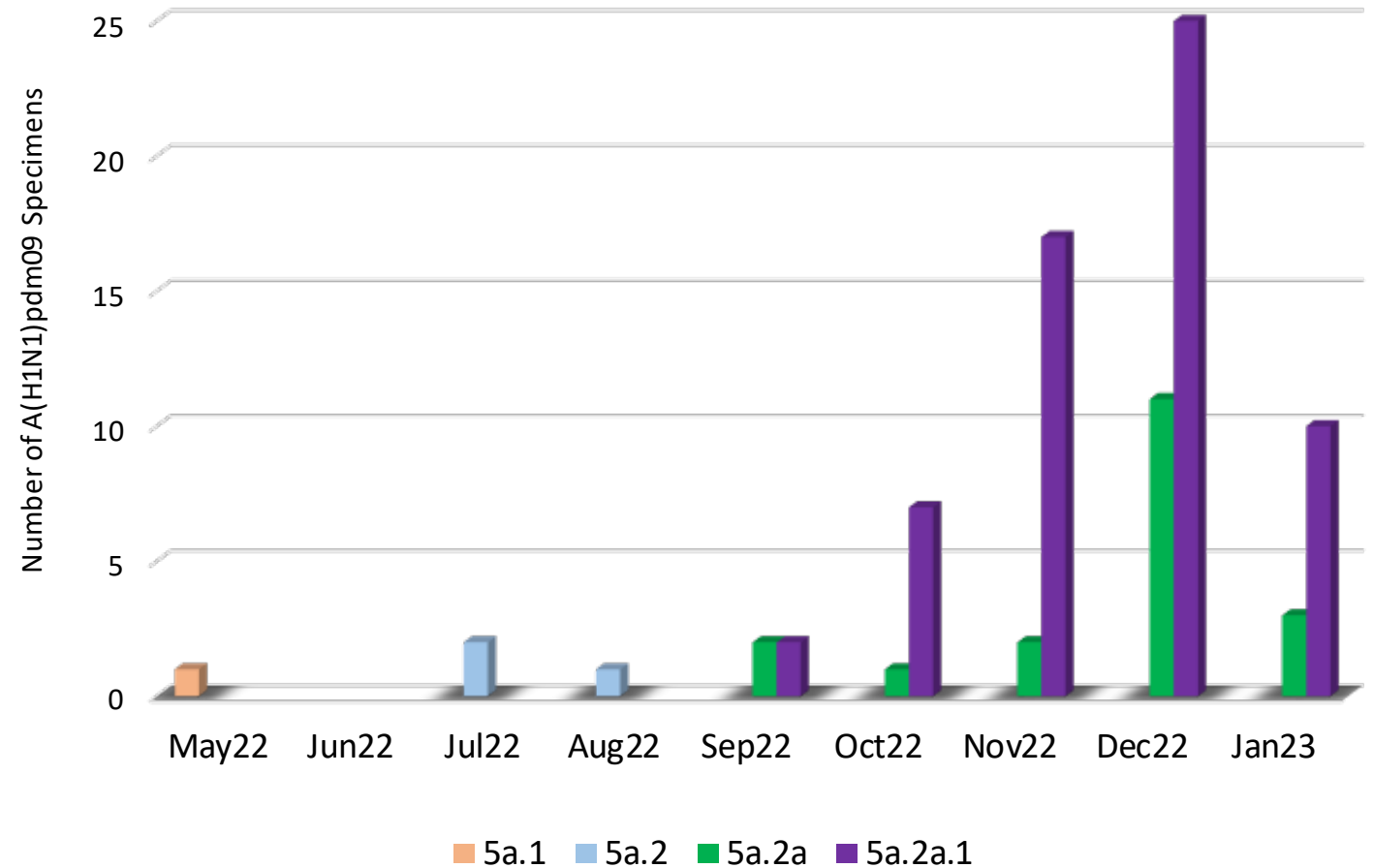


*Improving Health and Building Readiness...Anytime, Anywhere – Always!*



# Influenza A(H1N1)pdm09

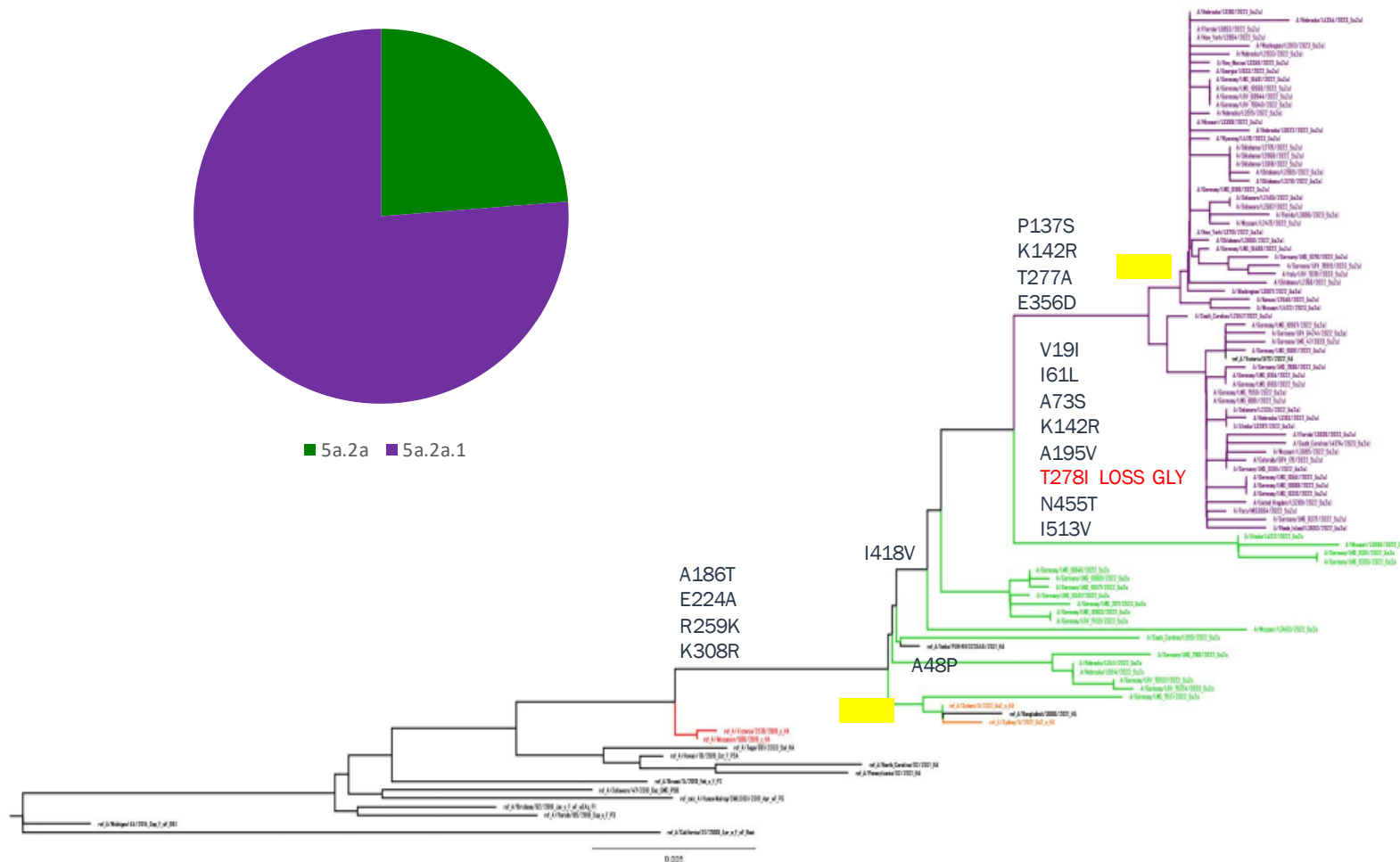
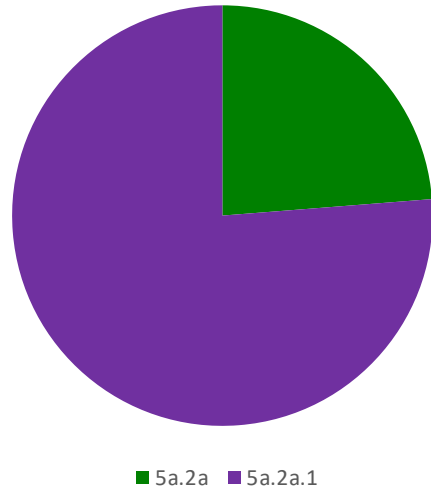
6B.1A Sub-Clade	#	%	Key Clade Substitutions Rel. to Vaccine
5a.2a	19	23.8%	K54Q A186T Q189E E224A R259K K308R
5a.2a.1	61	76.3%	P137S K142R T277A E356D I418V N451H



*Improving Health and Building Readiness...Anytime, Anywhere – Always!*

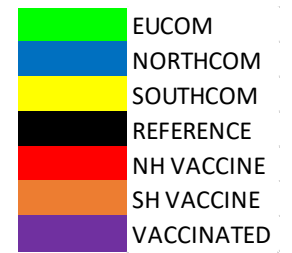


# Influenza A(H1N1)pdm09 HA



CLADE		
CLADE	TOTAL	% VACCINATED
5a.2a	19	21.1%
5a.2a.1	61	32.8%
ALL	80	30.0%

## Side Bar Legend



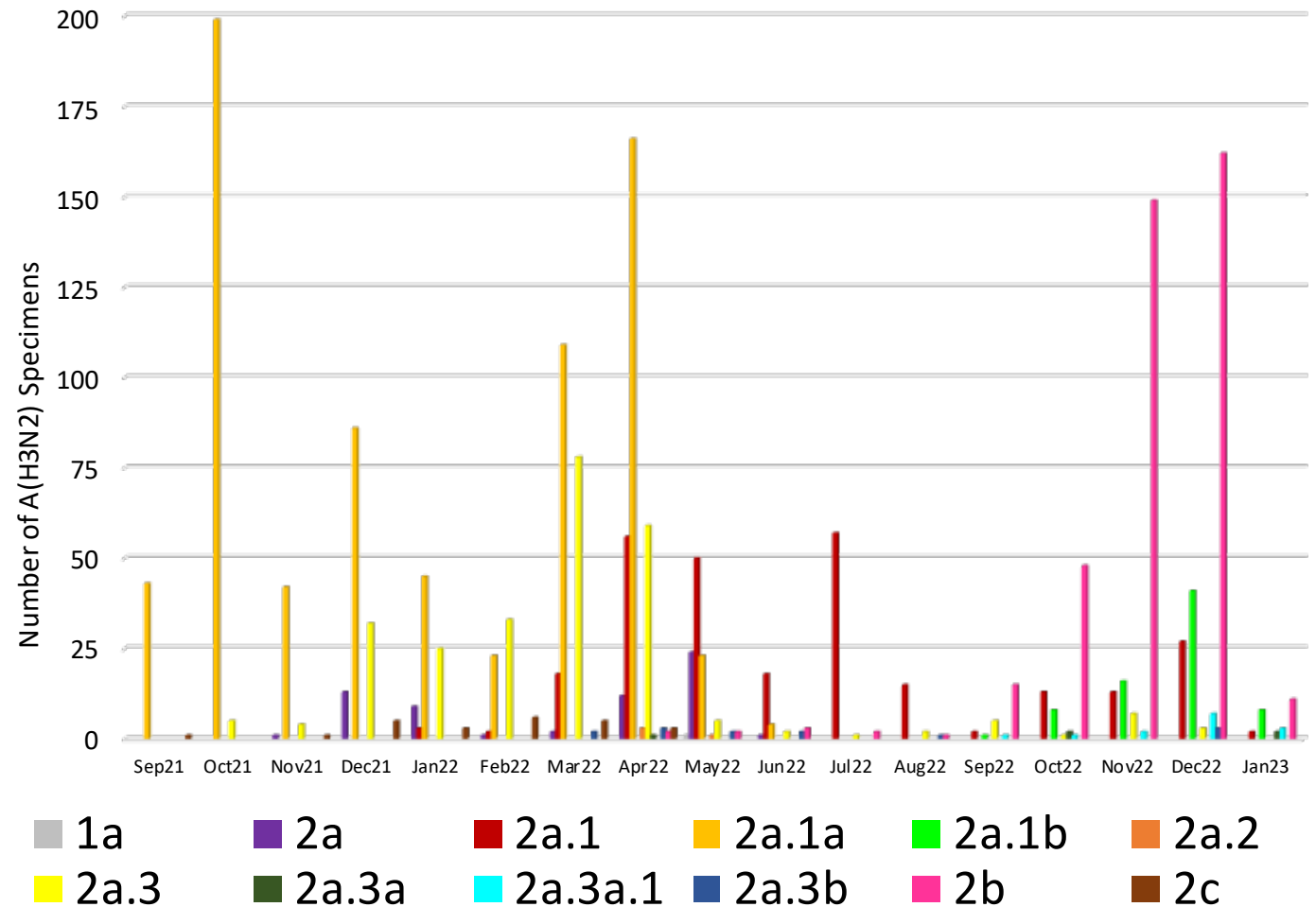
*Improving Health and Building Readiness...Anytime, Anywhere – Always!*





# Influenza A(H3N2)

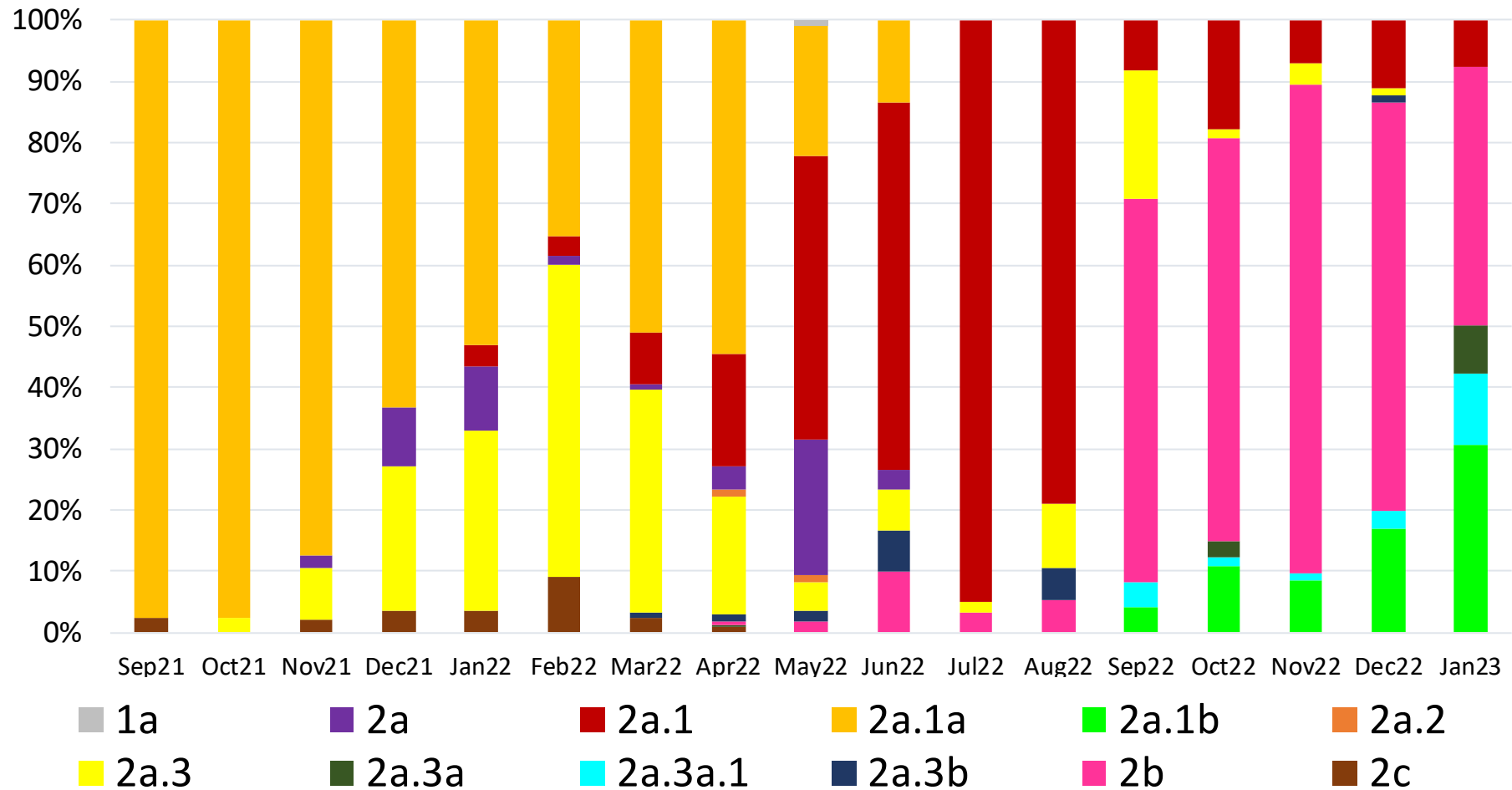
3C.2a1b.2a2 Sub-Clade	#	%	Key Clade Substitutions Rel. to Vaccine
2a.1	57	10.3%	<b>D53G</b> D104G K276R
2a.1b	74	13.4%	<b>D53G</b> D104G <b>I140K</b> K276R R299K
2a.3	16	2.9%	<b>D53N</b> N96S I192F N378S
2a.3a	4	0.7%	<b>D53N</b> E50K N96S I192F I223V N378S
2a.3a.1	14	2.5%	<b>D53N</b> E50K N96S <b>I140K</b> I192F I223V N378S
2a.3b	3	0.5%	<b>D53N</b> N96S I140M I192F N378S
2b	384	69.6%	<b>E50K</b> F79V <b>I140K</b> <b>S156H</b>



*Improving Health and Building Readiness...Anytime, Anywhere – Always!*



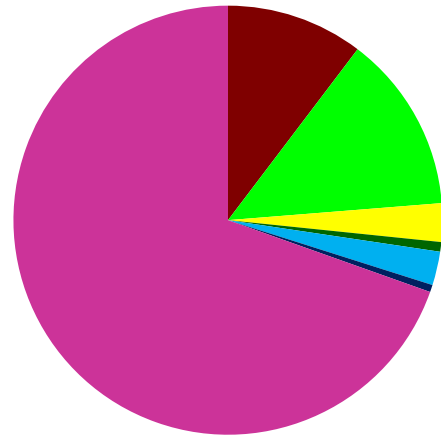
# Influenza A(H3N2)



*Improving Health and Building Readiness...Anytime, Anywhere – Always!*



# Influenza A(H3N2) HA



■ 2a.1 ■ 2a.1b ■ 2a.3 ■ 2a.3a ■ 2a.3a.1 ■ 2a.3b ■ 2b

D53N  
N96S ADD GLY  
I192F  
N378S

T135K LOSS GLY

I140K

V182I

S156H

E50K

F79V

I140K

S262N

T135A LOSS GLY

R33Q

D101E

E50K

I140K

I223V

D53G

D104G

K276R

K503R

R299K

D101E

E50K

F79V

I140K

S262N

T135A LOSS GLY

R33Q

D101E

E50K

I140K

I223V

D53G

D104G

K276R

K503R

R299K

D101E

E50K

F79V

I140K

S262N

T135A LOSS GLY

R33Q

D101E

E50K

I140K

I223V

D53G

D104G

K276R

K503R

R299K

D101E

E50K

F79V

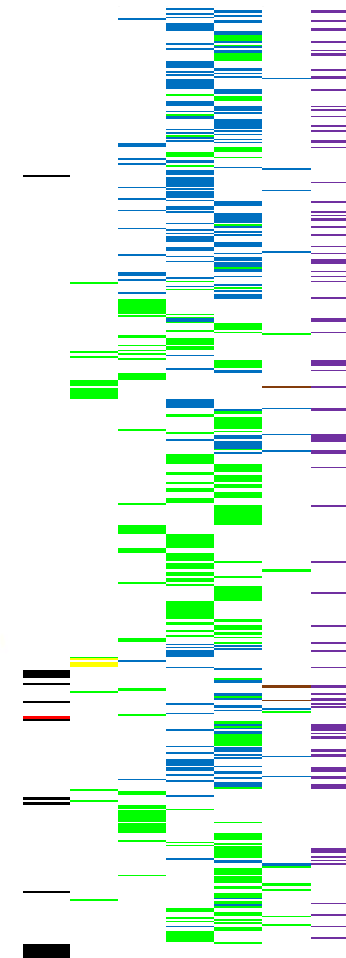
I140K

S262N

T135A LOSS GLY

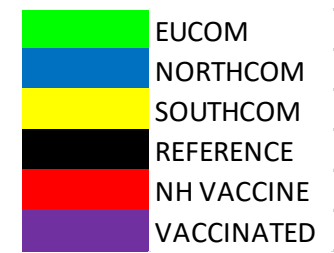
R33Q

D101E



CLADE	CLADE TOTAL	% VACCINATED
2a.1	57	33.3%
2a.1b	74	14.9%
2a.3	16	12.5%
2a.3a	4	50.0%
2a.3a.1	14	35.7%
2a.3b	3	0.0%
2b	384	16.1%
ALL	552	18.3%

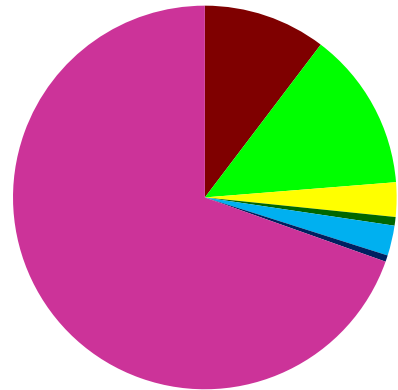
## Side Bar Legend



*Improving Health and Building Readiness...Anytime, Anywhere – Always!*



# Influenza A(H3N2) NA



■ 2a.1 ■ 2a.1b ■ 2a.3 ■ 2a.3a ■ 2a.3a.1 ■ 2a.3b ■ 2b

D127E  
N234D LOSS GLY

T238A

A82E

I307M

D463N ADD GLY

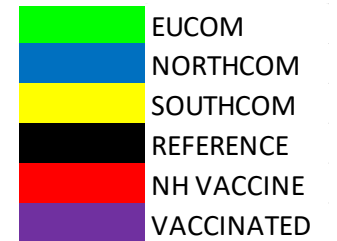
V263I

V215I  
S370T  
P386H

I469V

Ref Sep Oct Nov Dec Jan VAX

Side Bar Legend

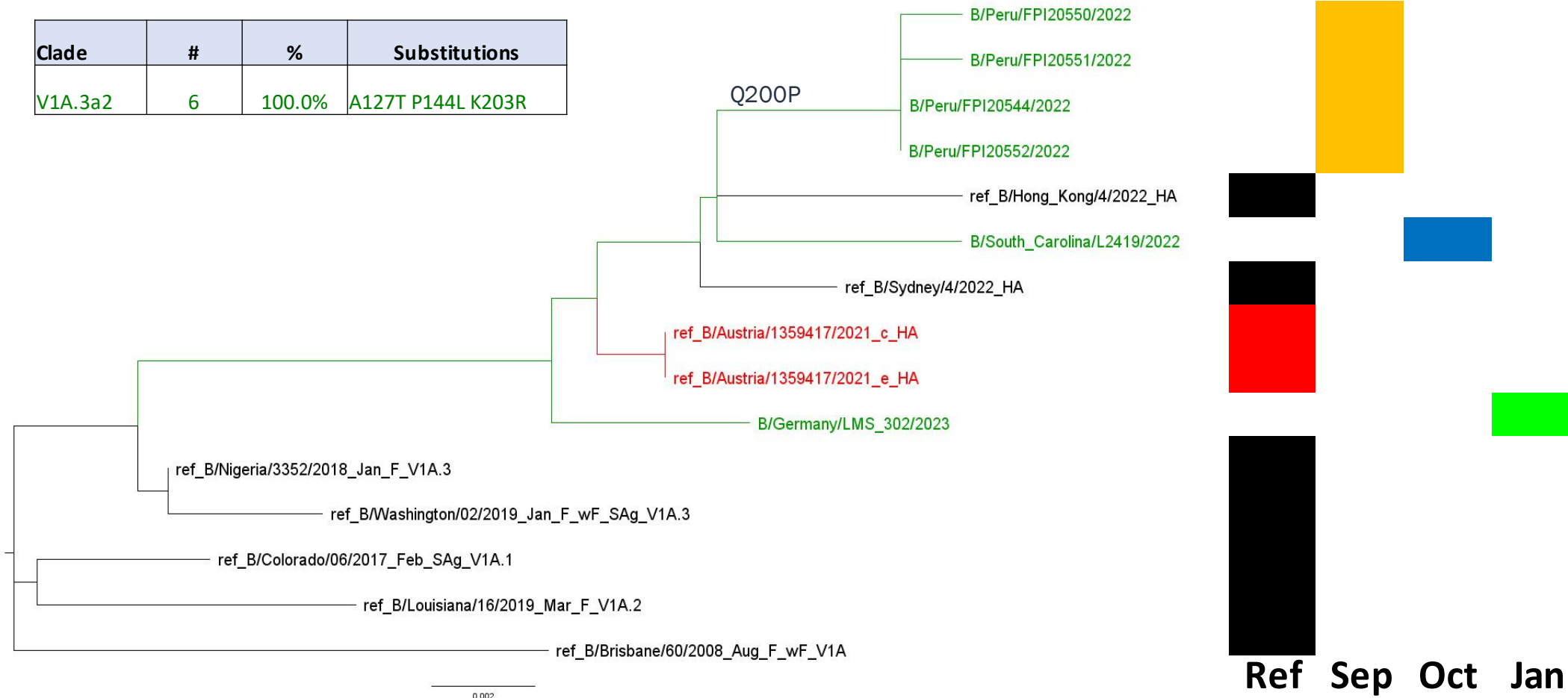


*Improving Health and Building Readiness...Anytime, Anywhere – Always!*



# Influenza B/Victoria HA

Clade	#	%	Substitutions
V1A.3a2	6	100.0%	A127T P144L K203R



## Side Bar Legend

	NORTHCOM
	EUCOM
	SOUTHCOM
	REFERENCE
	VACCINE



*Improving Health and Building Readiness...Anytime, Anywhere – Always!*



# Summary

---

- DoD surveillance provided sequence data for 638 influenza specimens, mostly centered on the U.S. and western Europe.
- 80 influenza A(H1N1)pdm09 HA sequences indicate 76% in clade 5a.2a.1 and 24% in clade 5a.2a. A similar structure is observed in NA with one potential reassortment.
- 552 influenza A(H3N2) HA sequences indicate 70% in clade 2b, 13% in 2a.1b, 10% in 2a.1, 3% each in 2a.3 and 2a.3a.1, and 1% each in 2a.3a and 2a.3b. Many potential reassortments were observed in NA, particularly among 2b and 2a.1b viruses.
- 6 influenza B HA sequences were all characterized as V1A.3a.2, with very little difference in structure to NA.



*Improving Health and Building Readiness...Anytime, Anywhere – Always!*



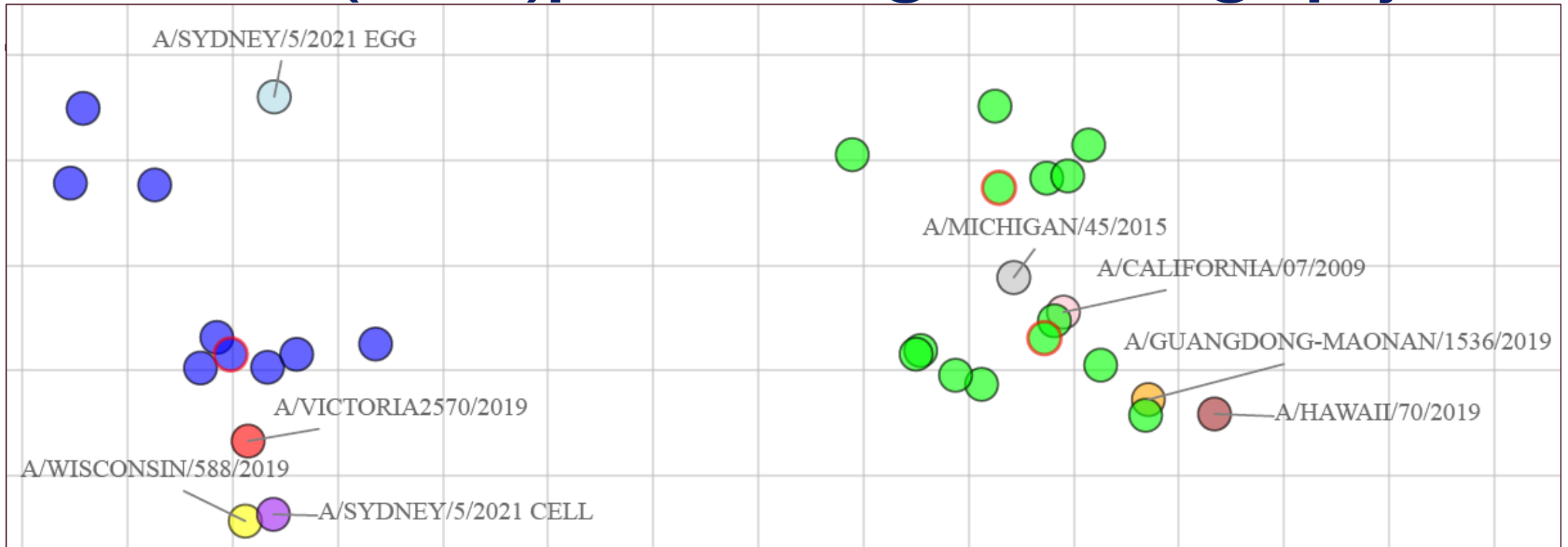
# DoD Antigenic Characterization



*Improving Health and Building Readiness...Anytime, Anywhere – Always!*



# Influenza A(H1N1)pdm09 Antigenic Cartography



- Isolates were grown in MDCK cells and tested by HINT assay
- Neutralization titer 50 was used for developing the antigenic map using ACMACS (Red borders indicate OCONUS samples)
- Antisera: A/Victoria2570/2019; A/Wisconsin/588/2019; A/Sydney/5/2021 egg; A/Sydney/5/2021 cell; A/Hawaii/70/2019; A/Guangdong-Maonan/1536/2019; A/Michigan/45/2015; A/California/07/2009

*Improving Health and Building Readiness...Anytime, Anywhere – Always!*





# Influenza A(H1N1)pdm09 Antigenic Cartography

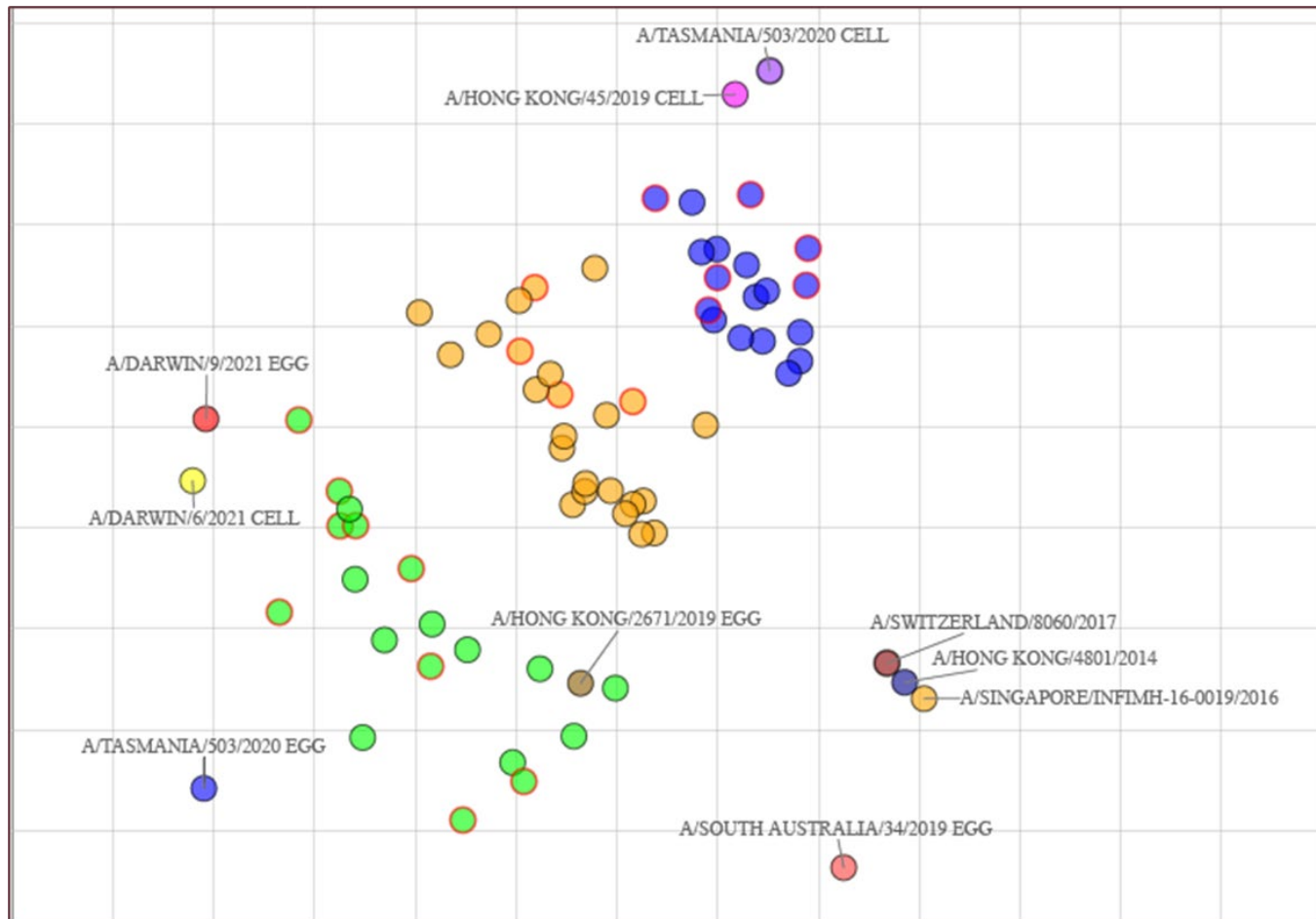
	A/Victoria2570/2019	A/Wisconsin/588/2019	A/Sydney/5/2021 egg	A/Sydney/5/2021 cell	A/Guangdong- Maonan/1536/2019	A/Hawaii/70/2019	A/Michigan/45/2015	A/California/07/2009	Clade	Mutations	
A/Victoria2570/2019	20480	20480	14482	81920	160	320	640	160			
A/Wisconsin/588/2019	14482	20480	7241	57926	160	320	640	80			
A/Sydney/5/2021 egg	10240	10240	10240	20480	80	320	640	160			
A/Sydney/5/2021 cell	10240	20480	10240	81920	320	640	640	80			
A/Guangdong-Maonan/1536/2019	160	160	80	320	40960	40960	81920	81920			
A/Hawaii/70/2019	40	80	40	160	40960	81920	40960	81920			
A/Michigan/45/2015	640	320	1280	640	10240	20480	40960	81920			
A/California/07/2009	640	80	1280	640	20480	28963	40960	81920			
Test antigens											
H1032210	640	640	640	320	10240	20480	10240	20480	5a.1	N129D T185I	
H1032217	160	320	640	160	5120	10240	20480	20480	5a.1	N129D T185I	
H1032209	640	320	320	320	10240	20480	10240	20480	5a.1	N129D T185I D187A Q189E	
H1032220	160	640	320	320	10240	10240	20480	20480	5a.1	N129D T185I D187A Q189E	
H1032212	1810	1810	640	1280	20480	40960	20480	40960	6B.1A.5b	K130N K160M	
H1032215	905	12280	320	640	20480	40960	20480	28963	6B.1A.5b	K130N K160M	
H1032201	1280	1280	640	1280	40960	81920	40960	81960	6B.1A.5b	K130N K160M	
H1032216	453	905	320	453	28963	40960	40960	57926	6B.1A.5b	K130N P137S K160M	
H1032213	453	640	226	453	20480	40960	40960	40960	6B.1A.5b	K130N P137S K160M	
H1032214	320	640	640	320	5120	10240	10240	10240	6B.1A.5b		
H1032203	1280	2560	640	1280	5120	5120	10240	10240	6B.1A.7	K130N	
H1032207	453	453	160	226	28963	40960	57926	57926	6B.1A.7	L161I	
H1032208	113	640	80	160	28963	57926	57926	57926	6B.1A.7	L161I	
H1032204	1280	2560	905	905	20480	81920	40960	81960	6B.1A.7	L161I E506D	
H1032211	40960	57926	20480	327680	113	226	320	80	5a.2	N129D K130N N156K L161I	
H1032219	10240	10240	5120	20480	20	40	320	40	5a.2	T185I V250A E506D	
H1221107	28963	57926	28963	163840	320	640	640	80	5a.2a		
H1230102	40960	40960	40960	163840	160	160	640	40	5a.2a.1	K54E D274N N451H	P137S K142R
H1230103	40960	40960	40960	163840	320	1280	1280	80	5a.2a.1	K54Q T216A	A186T Q189E
H1230104	20480	20480	40960	163840	640	320	320	80	5a.2a.1	K54Q T216A	E224A R259K
H1230105	40960	40960	40960	81920	2560	1280	640	320	5a.2a.1	K54Q T216A	T277A K308R
H1230107	10240	10240	20480	40960	80	160	320	40	5a.2a.1	K54Q T216A H399Q	E356D I418V
H1230108	10240	10240	10240	40960	40	40	160	40	5a.2a.1	K54Q T216A	



*Improving Health and Building Readiness...Anytime, Anywhere – Always!*



# Influenza A(H3N2) Antigenic Cartography



- H3N2 Isolates were grown in MDCK cells and tested by HINT assay
- Neutralization titer 50 was used for developing the antigenic map using ACMACS
- Red borders indicate EUCOM samples
- 3 clusters are observed
- Antisera:
  - A/Tasmania/503/2020 Egg
  - A/Tasmania/503/2020 Cell
  - A/Darwin/9/2021 Egg
  - A/Darwin/6/2021 Cell
  - A/Hong Kong/2671/2019 Egg
  - A/Hong Kong/45/2019 Cell
  - A/South Australia/34/2019 Egg
  - A/Switzerland/8060/2017
  - A/Singapore/INFIMH-16-0019/2016
  - A/Hong Kong/4801/2014



*Improving Health and Building Readiness...Anytime, Anywhere – Always!*



# A(H3N2) (Cluster 1) - cross-reactive to all tested antisera

	A/Tasmania/503/2020 Egg	A/Tasmania/503/2020 Cell	A/Darwin/9/2021 Egg	A/Darwin/6/2021 Cell	A/Hong Kong/2671/2019 Egg	A/Hong Kong/45/2019 Cell	A/South Australia/34/2019 Egg	A/Switzerland/8060/2017	A/Singapore/INFIMH-16-0019/2016	A/Hong Kong/4801/2014	Clade
A/Tasmania/503/2020 Egg	1810	80	640	640	40	40	57	80	113	160	
A/Tasmania/503/2020 Cell	226	1810	320	226	113	226	226	113	160	160	
A/Darwin/9/2021 Egg	160	226	3620	2560	160	160	160	160	80	80	
A/Darwin/6/2021 Cell	226	160	2560	5120	113	80	160	113	113	113	
A/Hong Kong/2671/2019 Egg	1810	905	905	3620	5120	1810	905	452	1280	905	
A/Hong Kong/45/2019 Cell	160	1810	452	320	320	640	160	160	113	160	
A/South Australia/34/2019 Egg	452	452	226	320	160	80	452	320	1280	905	
A/Switzerland/8060/2017	640	640	320	320	320	320	320	5120	5120	5120	
A/Singapore/INFIMH-16-0019/2016	320	640	320	320	320	226	226	640	5120	5120	
A/Hong Kong/4801/2014	320	640	452	320	320	320	320	1280	5120	5120	
H3221126	1280	905	1810	640	320	453	640	640	320	320	2b
H3221110	905	905	1810	453	453	905	640	453	226	453	2b
H3221111	640	640	905	640	320	640	640	640	320	320	2b
H3221119	905	905	1280	640	640	905	640	905	640	640	2b
H3221120	640	905	1280	640	640	640	320	640	453	640	2b
H3221121	640	1280	2560	905	640	1280	1280	905	640	640	2b
H3230124	905	1810	1810	905	905	905	320	640	640	640	2b
H3230127	1280	905	1810	905	640	905	905	905	453	453	2b
H3230119	453	1810	2560	905	640	1280	453	1280	905	640	2b
H3230130	1810	905	2560	905	905	1810	1810	1280	640	640	2b
H3230136	1280	1810	1810	905	1280	1280	1280	1280	1280	640	2b
H3230143	905	1280	2560	640	1280	1280	1280	905	1810	905	2b
H3230117	640	640	2560	905	905	1280	640	640	640	453	2b
H3230118	905	1280	1810	1810	905	905	453	905	905	905	2b
H3230116	1280	1280	3620	1280	905	1810	905	905	1280	905	2b
H3230120	905	905	2560	1810	905	1810	1810	905	1810	905	2b
H3221117	453	1280	2560	1280	960	1280	453	1280	1280	905	2b
H3230123	1280	905	1810	1280	1280	1810	1280	1280	1280	1280	2b



*Improving Health and Building Readiness...Anytime, Anywhere – Always!*



# A(H3N2) (Cluster 2) - high reactivity to A/Darwin/9/2021 Egg and A/Darwin/6/2021 Cell based antisera and cross-reactive to most antisera tested

	A/Tasmania/503/2020 Egg	A/Tasmania/503/2020 Cell	A/Darwin/9/2021 Egg	A/Darwin/6/2021 Cell	A/Hong Kong/2671/2019 Egg	A/Hong Kong/45/2019 Cell	A/South Australia/34/2019 Egg	A/Switzerland/8060/2017	A/Singapore/INFIMH-16-0019/2016	A/Hong Kong/4801/2014	Clade
A/Tasmania/503/2020 Egg	1810	80	640	640	40	40	57	80	113	160	
A/Tasmania/503/2020 Cell	226	1810	320	226	113	226	226	113	160	160	
A/Darwin/9/2021 Egg	160	226	3620	2560	160	160	160	160	80	80	
A/Darwin/6/2021 Cell	226	160	2560	5120	113	80	160	113	113	113	
A/Hong Kong/2671/2019 Egg	1810	905	905	3620	5120	1810	905	452	1280	905	
A/Hong Kong/45/2019 Cell	160	1810	452	320	320	640	160	160	113	160	
A/South Australia/34/2019 Egg	452	452	226	320	160	80	452	320	1280	905	
A/Switzerland/8060/2017	640	640	320	320	320	320	320	5120	5120	5120	
A/Singapore/INFIMH-16-0019/2016	320	640	320	320	320	226	226	640	5120	5120	
A/Hong Kong/4801/2014	320	640	452	320	320	320	320	1280	5120	5120	
H3221133	5120	5120	10240	7241	2560	3620	3620	1810	1280	1280	2a.1
H3230104	1810	1810	5120	3620	320	1280	905	453	453	226	2a.1
H3230109	453	905	3620	2560	453	1810	905	640	640	640	2a.1
H3230101	5120	5120	10240	1280	905	2560	3620	453	453	226	2a.1b
H3221105	3620	5120	7241	7241	1810	3620	3620	1280	453	640	2a.1b
H3221128	3620	5120	10240	5120	2560	2560	3620	3840	5120	3620	2a.1b
H3230107	5120	5120	5120	5120	3620	3620	3620	2560	640	2560	2a.1b
H3221129	5120	3620	7241	7241	3620	3620	3620	1280	1280	1280	2a.1b
H3221115	640	905	5120	1810	640	640	905	320	320	160	2a.3
H3221113	2560	2560	5120	5120	1810	2560	2560	1810	1280	1280	2a.3
H3230114	5120	5120	5120	5120	5120	5120	5120	3620	3620	1280	2a.3
H3221138	453	640	5120	2560	905	1280	2560	640	453	320	2a.3
H3221112	1280	1810	3620	2560	453	640	640	640	640	453	2a.3
H3230113	2560	3620	10240	5120	3620	2560	3620	2560	905	1280	2a.3b
H3230138	1810	3620	5120	3620	640	905	1810	453	640	453	2b
H3230140	3620	2560	5120	5120	905	1280	2560	640	640	640	2b
H3230132	2560	3620	5120	2560	1810	1810	3620	1810	1280	905	2b
H3230134	3620	3620	2560	1280	2560	2560	2560	2560	1810	905	2b
H3230121	5120	5120	7241	5120	5120	5120	3620	3620	1810	1810	2b
H3221123	3620	5120	5120	3620	1810	3620	3620	5120	3620	3620	2b
H3230137	2560	2560	5120	5120	1810	1280	2560	1280	905	453	2b
H3221109	5120	5120	7241	5120	2560	2560	1810	905	905	453	2b
H3221127	2560	1810	5120	2560	905	905	905	453	226	453	2b
H3221125	5120	5120	14482	5120	3620	3620	3620	3620	3620	2560	2b

*Improving Health and Building Readiness...Anytime, Anywhere – Always!*



## A(H3N2) (Cluster 3) - reactive to A/Darwin/9/2021 Egg and A/Darwin/6/2021 Cell based antisera (low cross-reactivity to other antisera for some samples)

	A/Tasmania/503/2020 Egg	A/Tasmania/503/2020 Cell	A/Darwin/9/2021 Egg	A/Darwin/6/2021 Cell	A/Hong Kong/2671/2019 Egg	A/Hong Kong/45/2019 Cell	A/South Australia/34/2019 Egg	A/Switzerland/8060/2017	A/Singapore/INFIMH-16-0019/2016	A/Hong Kong/4801/2014	Clade
A/Tasmania/503/2020 Egg	1810	80	640	640	40	40	57	80	113	160	
A/Tasmania/503/2020 Cell	226	1810	320	226	113	226	226	113	160	160	
A/Darwin/9/2021 Egg	160	226	3620	2560	160	160	160	160	80	80	
A/Darwin/6/2021 Cell	226	160	2560	5120	113	80	160	113	113	113	
A/Hong Kong/2671/2019 Egg	1810	905	905	3620	5120	1810	905	452	1280	905	
A/Hong Kong/45/2019 Cell	160	1810	452	320	320	640	160	160	113	160	
A/South Australia/34/2019 Egg	452	452	226	320	160	80	452	320	1280	905	
A/Switzerland/8060/2017	640	640	320	320	320	320	320	5120	5120	5120	
A/Singapore/INFIMH-16-0019/2016	320	640	320	320	320	226	226	640	5120	5120	
A/Hong Kong/4801/2014	320	640	452	320	320	320	320	1280	5120	5120	
H3230106	453	453	5120	3620	320	905	905	453	1280	905	2a.1
H3221130	640	905	5120	2560	320	640	453	320	320	320	2a.1
H3221131	640	640	5120	1280	320	320	320	320	226	113	2a.1
H3221132	640	640	5120	3620	320	453	453	453	320	320	2a.1
H3221104	320	453	1810	1810	320	320	320	320	160	160	2a.1
H3221101	905	905	5120	5120	640	905	640	640	640	453	2a.1a
H3221107	640	453	3620	2560	453	1810	453	226	453	320	2a.1a
H3221103	640	640	5120	1810	320	453	640	640	453	453	2a.1a
H3221106	320	320	2560	1280	226	226	453	320	453	320	2a.1a
H3230108	1280	905	5120	2560	453	453	1280	1280	453	1280	2a.1b
H3221114	1280	905	5120	1810	640	905	905	905	453	453	2a.3
H3221136	1280	640	5120	2560	453	640	640	320	320	320	2a.3a
H3230133	1280	1280	5120	1810	1280	1280	640	1280	1280	905	2b
H3230139	1810	1280	2560	1280	453	640	905	453	453	453	2b
H3230122	1280	1280	3620	1280	1280	1810	640	1810	1810	1280	2b
H3230115	640	1280	1810	905	905	905	1280	1280	905	640	2b
H3221118	905	640	1810	640	640	905	640	905	453	453	2b
H3230131	640	640	1280	905	453	905	640	453	640	640	2b
H3221122	905	640	905	453	226	320	453	453	320	320	2b



*Improving Health and Building Readiness...Anytime, Anywhere – Always!*





# Antigenic Characterization Summary

---

- Ferret antisera against both 5a.2 (A/Wisconsin/588/2019 & A/Victoria/2570/2019) and 5a.2a (A/Sydney/5/2021) viruses neutralized our circulating A(H1N1)pdm09 viral isolates in our surveillance network.
- Ferret antisera generated against 2a (A/Darwin/6/2021 & A/Darwin/9/2021) viruses neutralized our circulating A(H3N2) viral isolates in our surveillance network.



*Improving Health and Building Readiness...Anytime, Anywhere – Always!*



# Notes on Vaccine Strain Recommendations

---

- The WHO influenza vaccine strain recommendations for the 2023-2024 Northern Hemisphere season are:
  - For the 2023-24 influenza vaccine A(H1N1) component: **A/Victoria/4897/2022-like** virus for the egg-based vaccine and **A/Wisconsin/67/2022-like** virus for the cell- or recombinant-based vaccine
    - ✓ Based on our 2022-23 genetic and antigenic data, we agree with this recommendation
  - For the 2023-24 influenza vaccine A(H3N2) component: **A/Darwin/9/2021-like** virus for the egg-based vaccine and **A/Darwin/6/2021-like** virus for the cell- or recombinant-based vaccine
    - ✓ Based on our 2022-23 genetic and antigenic data, we agree with this recommendation
  - For the 2023-24 influenza vaccine B/Victoria component: **B/Austria/1359417-like** virus for the egg-based and cell- or recombinant-based vaccines
    - ✓ We do not have 2022-23 data to agree or disagree with this recommendation
  - The above three influenza strains are recommended for the trivalent vaccine, and for the quadrivalent vaccine to include these three in addition to the B/Yamagata component, **B/Phuket/3073/2013-like** virus for the egg-based and cell- or recombinant-based vaccines
    - ✓ We do not have 2022-23 data to agree or disagree with this recommendation



*Improving Health and Building Readiness...Anytime, Anywhere – Always!*



# Acknowledgements

---

## AFHSD

Col Patrick Kennedy  
CDR Matthew Kasper  
MAJ Ashley Hydrick  
Capt Manuel Moncada  
Dr. Kathleen Creppage  
CAPT Natalie Wells  
Dr. Angelia Cost  
Mr. Kelvin Blade  
Dr. Kathleen Creppage  
Ms. Zheng Hu  
Ms. June Early

## DCPH-D

Lt Col Anthony Robbins  
Dr. Paul Sjoberg  
Mr. Matthew Crum  
Ms. Laurie DeMarcus  
Ms. Caroline Smith  
Mr. Jeffrey Thervil  
Mr. Bismark Kwah  
Dr. Wenping Hu  
Ms. Kayla Brown  
Lt Col Kathryn Shaw  
Maj Peter Wasik  
Dr. Deanna Muehleman  
Mr. William Gruner  
Ms. Carol Garrett

Mr. James Hanson  
Dr. Anthony Fries  
Dr. Elizabeth Macias  
Ms. Pamela Bentley  
Ms. Denise Kramer  
Mr. Matthew Sanders  
Ms. Aleta Yount  
Ms. Debby Koontz  
Mr. Don Johson  
Mr. Andrew Martin  
Ms. Renee Mayhon  
Mr. Donald Minnich  
Ms. Dannielle Parlett  
Mr. Andrew Rhinevault  
Ms. Sarah Purves  
TSgt Renell Capati  
SSgt Brandon Ray  
SSgt Jonathon Barton

## NHRC

LCDR Michelle Lane  
Dr. Francisco Mimica Porras  
Dr. Ryan Underwood  
Mr. Roger Pan  
Ms. Erica Duarte

## NMRC

Ms. Zhaodong Liang

Mr. Daniel Ewing  
Dr. Appavu Sundaram

## LRMC

Mr. Fritz Castillo  
Ms. Jennifer Black  
CPT Cole Anderson

## AFRIMS

MAJ Thomas Cotrone  
LTC Anthony Jones  
MAJ Sandra Demons  
LTC Stefan Fernandez

## NAMRU-3

CDR Samuel Levin  
LCDR James Harwood  
Dr. Mayar Said  
Bassem Hamdy  
Omar Nowar  
Dr. Jae Dugan  
LCDR Rebecca Pavlicek, PhD  
MAJ Edgie-Mark Co, PhD  
LT Emily K. Stefanov, PhD



*Improving Health and Building Readiness...Anytime, Anywhere – Always!*





# Acknowledgements

## NAMRU-6

LCDR Paul Graf  
Dr. Sonia Ampuero  
Dr. Maria Silva  
Ms. Carolina Geevara  
Mr. Cristopher Cruz  
Ms. Gilda Troncos  
Ms. Victoria Espejo  
Mr. Roger Catillo  
Ms. Angélica Espinoza  
Ms. Gladys Carrión  
Mr. Julio Evangelista  
Ms. Patricia Galván  
Dr. Yeny Tinoco

## USAMRD-A

Maj Gen (Dr.) Charles Emilio Mwanziva  
Dr. Denis Byarugaba  
Dr. Bernard Erima  
Dr. Hannah Kibuuka  
Dr. Chesnodi Kulanga  
Dr. Gerald Misinzo  
Dr. John Waitumbi  
Beth Mutai  
Faith Sigei  
Leah Muthigani

Jude Ssensamba

## Recruit Surveillance Sites

Marine Corps Recruit Depot San Diego  
Marine Corps Recruit Depot Parris Island  
Recruit Training Command Great Lakes  
Fort Leonard Wood  
Fort Benning  
Fort Jackson  
Lackland Air Force Base  
Coast Guard Training Center Cape May

## CDC-California Department of Health Border Infectious Disease Surveillance Sites

Clinica de Salud del Pueblo Brawley  
Clinica de Salud del Pueblo Calexico  
Clinica de Salud del Pueblo El Centro  
San Ysidro Health Center  
Pioneers Memorial Healthcare  
El Centro Regional Medical Center  
Sharp Chula Vista Hospital  
Mexicali General Hospital

## DoD Beneficiary Surveillance Sites

Branch Health Clinic/ Marine Corps Air Station Yuma  
Naval Hospital Camp Pendleton

Captain James A. Lovell Federal Health Care Center (Naval Hospital Great Lakes)  
Robert E. Bush Naval Hospital Twenty Nine Palms  
Naval Training Center San Diego  
Naval Medical Center San Diego  
Naval Branch Health Clinic Kearny Mesa  
Naval Health Clinic Lemoore  
Naval Hospital Yokosuka  
Naval Branch Health Clinic Naval Base San Diego  
Naval Medical Center Portsmouth  
Boone Branch Health Clinic  
Oceana Branch Health Clinic

## Central Public Health Lab, Jordan

Dr. Mohmaud Gazo



*Improving Health and Building Readiness...Anytime, Anywhere – Always!*



# Questions?

---

Anthony C. Fries, PhD  
Applied Technology & Genomics Division  
US Air Force School of Aerospace Medicine Public Health Department  
Email: [anthony.fries.1@us.af.mil](mailto:anthony.fries.1@us.af.mil)

Capt Manuel Moncada, MS  
Respiratory Focus Area Lead, AFHSD-Global Emerging Infections Surveillance Branch  
E-mail: [manuel.Moncada.mil@health.mil](mailto:manuel.Moncada.mil@health.mil)

MAJ Ashley Hydrick DVM, MPH, DACVPM  
Focus Area Chief, AFHSD-Global Emerging Infections Surveillance Branch  
[ashley.m.hydrick.mil@health.mil](mailto:ashley.m.hydrick.mil@health.mil)

CDR Matthew Kasper, PhD  
Chief, AFHSD-Global Emerging Infections Surveillance Branch  
E-mail: [matthew.r.kasper2.mil@health.mil](mailto:matthew.r.kasper2.mil@health.mil)



*Improving Health and Building Readiness...Anytime, Anywhere – Always!*



# Extra Slides

---



*Improving Health and Building Readiness...Anytime, Anywhere – Always!*



# U.S. Service Members: Cohort Study Design – Inpatient VE

- Same study parameters as case test-negative study except:
  - Cohort study design
  - Time Period: September 1, 2022 – January 7, 2023
  - Outcome: lab-confirmed influenza (rapid/PCR/culture) indicating hospitalization or inpatient stay with 1st or 2nd ICD-10-CM code for Influenza (J09-J11)
- Results:

Outcome	Vaccination Status	Case N (%)	Person-Years (PY)	Incidence Rate per 10,000 PY	Adjusted IRR (95% CI)*	Adjusted VE (95% CI)*
Lab-confirmed	Vaccinated	4 (18)	157,039	0.03	0.42 (0.14, 1.24)	58 (-24, 86)
	Unvaccinated	18 (82)	299,465	0.06		
Lab-confirmed & inpatient flu diagnosis	Vaccinated	8 (20)	157,039	0.05	0.46 (0.21, 1.00)	54 (0, 79)
	Unvaccinated	33 (80)	299,039	0.11		

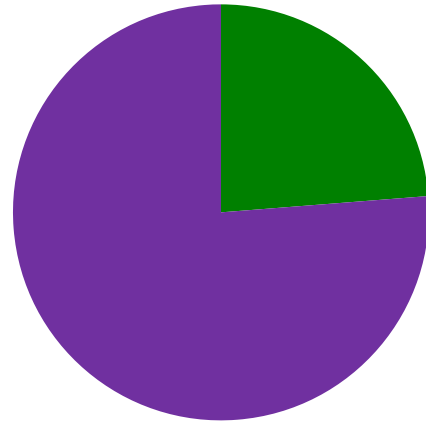
\*Adjusted for sex, age category, and 5-year prior vaccination (Y/N)



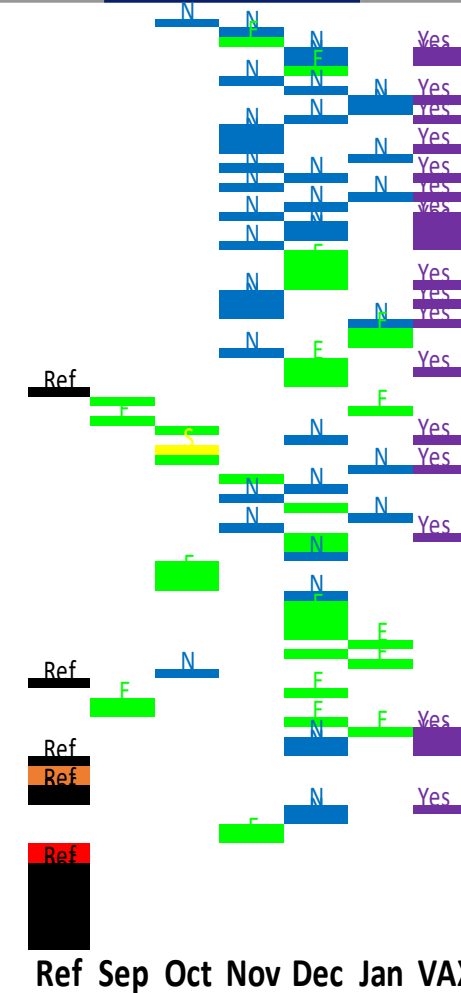
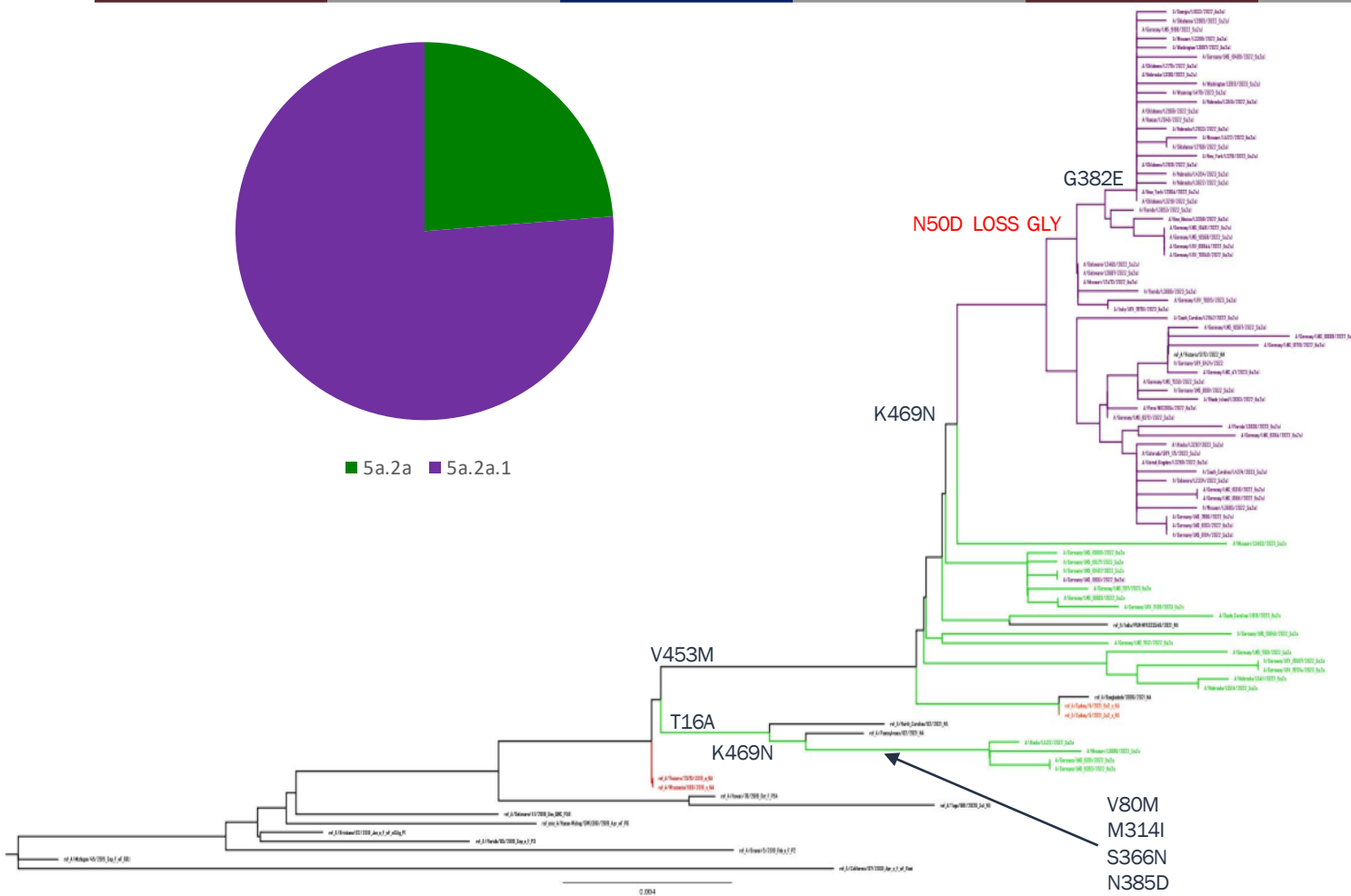
*Improving Health and Building Readiness...Anytime, Anywhere – Always!*



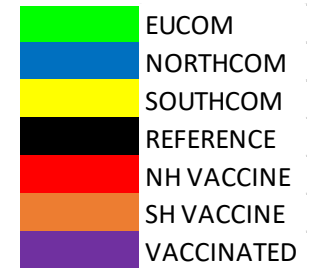
# Influenza A(H1N1)pdm09 NA



■ 5a.2a ■ 5a.2a.1



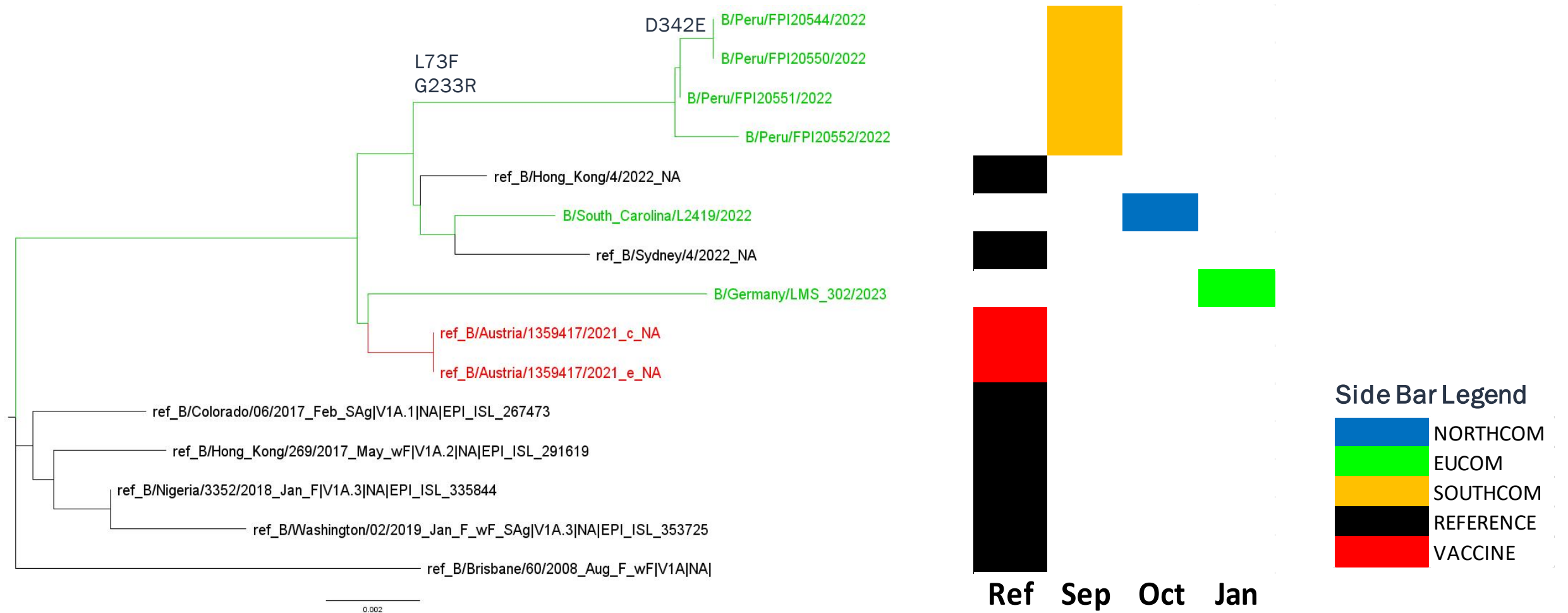
## Side Bar Legend



*Improving Health and Building Readiness...Anytime, Anywhere – Always!*



# Influenza B/Victoria NA



*Improving Health and Building Readiness...Anytime, Anywhere – Always!*

