

FDA Staff Manual Guides, Volume I – Organizations and Functions

Department of Health and Human Services

Food and Drug Administration

Center for Veterinary Medicine

Office of Surveillance and Compliance

Division of Food Compliance

Effective: September 30, 2022

1. Division of Food Compliance (DCGDE).

- A. Oversees the Centers post-market animal food surveillance and compliance activities.
- B. Coordinates and prepares compliance and enforcement-oriented replies to inquiries from consumers, State and Federal governments, Congress, industry, etc.
- C. Works directly with ORA to develop and execute FDA's animal food inspection program.
- D. Advises on regulatory and administrative policy issues and develops enforcement strategies involving animal food. Prepares and issues guidance to the field offices. Coordinates and prepares compliance and enforcement-oriented replies to inquiries from consumers, State and Federal governments, Congress, industry, etc.

2. Complaints, Emergencies, and Recall Team Branch (DCGDE1).

- A. Evaluates complaints received related to CVM regulated products.
- B. Coordinates animal food recalls, including necessary coordination with ORA.
- C. Manages emergency response incidents (e.g., foodborne illness outbreaks, natural disasters).
- D. Triage complaints into animal food or animal drug complaints and coordinates with the OSC Division of Drug Compliance on drug complaints and recalls as necessary.
- E. Serves as the Office liaison with CVM's OAS/DOHM Vet-LIRN Branch.

3. Investigation and Compliance Action Branch (DCGDE2).

- A. Performs preliminary reviews of Establishment Inspection Reports, investigations, complaints, and other information on regulated products. Coordinates investigative and regulatory follow-up through consultation with management, legal, and scientific advisors. Reviews proposed regulatory actions submitted by the field offices and recommends whether such actions should be pursued further by the FDA.
- B. Serves as the primary case managers in DFC for investigations related to for cause-inspections (e.g., those resulting from recalls, reportable food registry reports, or previous compliance concerns).
- C. Serves as the Center focal point to triage and respond to inquiries from ORA and State staff to provide technical support on inspectional approach, policy support, and scientific inquiries.

4. Regulatory Policy and Program Branch (DCGDE3).

- A. Develops, monitors, and evaluates the Center's compliance and surveillance programs pertaining to tissue residue and National Drug Residue Milk Monitoring.
- B. Evaluates regulatory approaches to human food safety concerns including monitoring the prevalence of violative levels of harmful drugs and chemicals in meat and poultry based on findings reported to the Center by the United States Department of Agriculture / Food Safety Inspection Service (USDA/FSIS) and develops strategies designed to prevent food safety problems associated with pathogens and residues.
- C. Performs preliminary reviews of Establishment Inspection Reports, investigations, and other information on regulated products resulting from routine establishment inspections. Coordinates regulatory follow-up through consultation with management, legal, and scientific advisors. Reviews proposed regulatory actions submitted by the field offices and recommends whether such actions should be pursued further by the FDA.
- D. Develop and deliver animal food regulator training in coordination with ORA.

5. Science Policy Branch (DCGDE4).

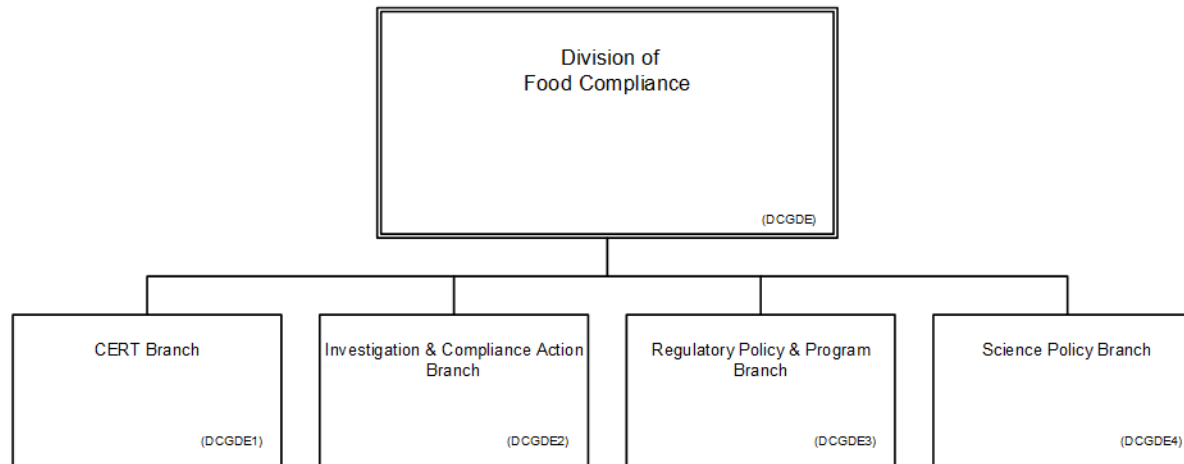
- A. Directs FDA sampling of animal food commodities to obtain information on and control the presence of biological, chemical and physical hazards in animal food.
- B. Evaluates data to develop scientific policy on known and emerging animal food contaminants to protect human and animal health.
- C. Identifies and reviews potential safety signals within post-market adverse event reports received by FDA CVM for animal foods, including pet food.

- D. Provides advice and scientific support to FDA compliance officers and investigators regarding the safety of animal food contaminated with biological, chemical and/or physical contaminants.

6. Authority and Effective Date.

The functional statements for the Division of Food Compliance were approved by the Commissioner of Food and Drugs on August 11, 2022 and effective on September 30, 2022.

**Department of Health and Human Services
Food and Drug Administration
Center for Veterinary Medicine
Office of Surveillance and Compliance
Division of Food Compliance**



Staff Manual Guide 1244.14
Organizations and Functions
Effective Date: September 30, 2022

The following is the Department of Health and Human Services, Food and Drug Administration, Center for Veterinary Medicine, Office of Surveillance and Compliance, Division of Food Compliance organization structure depicting all the organizational structures reporting to the Director of Food Compliance:

Division of Food Compliance (DCGDE)

Complaints, Emergencies, and Recall Team Branch (DCGDE1)

Investigation and Compliance Action Branch (DCGDE2)

Regulatory Policy and Program Branch (DCGDE3)

Science Policy Branch (DCGDE4)