

## PRIOR NOTICE OF IMPORTED FOOD

---

### WHAT IS PRIOR NOTICE?

Prior notice is notification to the FDA that an article of food, including food for animals, is being imported or offered for import into the United States in advance of the arrival of the article of food at the U.S. border.

---

### THE FDA DIVISION OF FOOD DEFENSE TARGETING

answers questions about Prior Notice policies, procedures and interpretations

**24 HOURS PER DAY,  
7 DAYS PER WEEK**

---

**1-866-521-2297**

**[www.access.fda.gov](http://www.access.fda.gov)**



## DIVISION OF FOOD DEFENSE TARGETING

---

The **Division of Food Defense Targeting** will liaise with U.S. **Custom and Border Protection (CBP)** and other federal agencies to obtain and respond to intelligence relating to potentially hazardous human and animal food products imported or offered for import into the United States

### FDA AND CBP WORK JOINTLY TO:

- Ensure the security and safety of U.S. food supply
- Stop harmful food products before they enter the country.

**[www.cbp.gov](http://www.cbp.gov)**

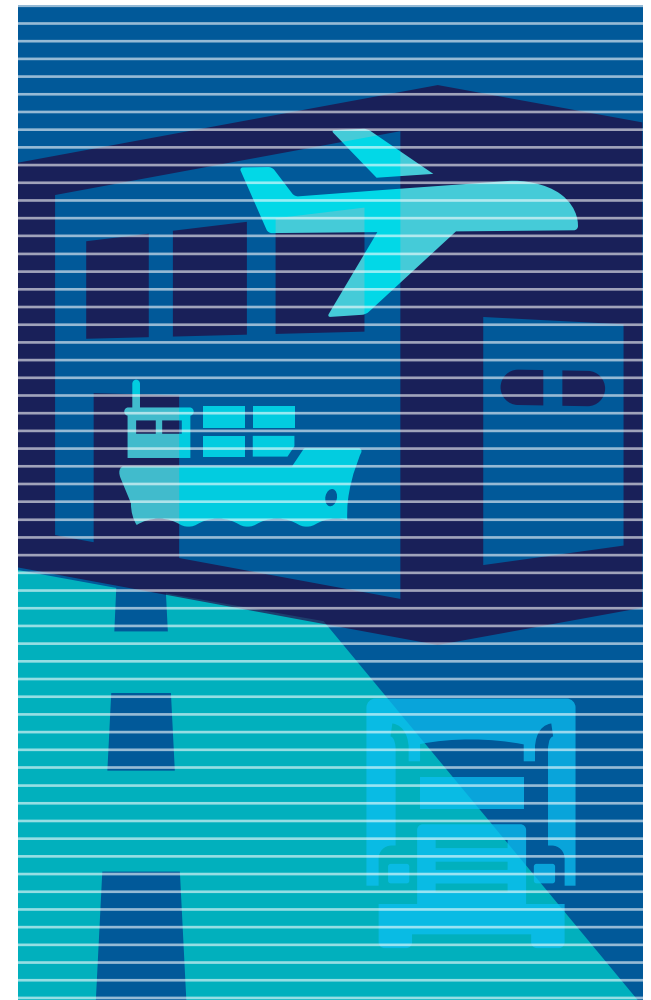
**[www.fda.gov](http://www.fda.gov)**



## PRIOR NOTICE

---

**ALWAYS ON TARGET**  
**PROTECTING THE U.S. FOOD SUPPLY**



## BIOTERRORISM ACT ESTABLISHED:

- I. Prior Notice requirements for foods imported or offered for import into the United States.
- II. Registration requirements for food facilities manufacturing or processing, packing, or holding of food for consumption in the United States.

Every manufacturer or processor of food offered for import into the United States must have a valid food facility registration on record with the FDA. Registration information is required data in the Prior Notice.

Contact  
the  
DFDT  
NON  
STOP



### REQUIRED PRIOR NOTICE (PN) TIMEFRAMES:

**Land Border:** PN must be submitted 2 hours before arriving at the port of arrival

**Air/Rail:** PN must be submitted 4 hours before arriving at the port of arrival

**Vessel:** PN must be submitted 8 hours before arriving at the port of arrival

**International Mail:** PN must be submitted before the food is sent from the foreign country



### HOW TO SUBMIT PRIOR NOTICE:

Prior Notice must be submitted electronically through either of the following electronic systems: ABI/ACE of the Customs and Border Protection Service (CBP)

FDA PNSI [www.access.fda.gov](http://www.access.fda.gov)



### PRIOR NOTICE SUBMISSION:

- Any person or entity possessing the required knowledge can submit PN data to FDA.



### FOODS IMPORTS REQUIRING PRIOR NOTICE

- All food imported or offered for import into the United States
- Imported food, which is stored or distributed in the United States
- Imported food, used as gifts, trade items, and quality assurance/control samples
- Imported food transshipped through the United States to another country
- Food imported into the United States for future export
- Imported Food admitted into a U.S. Foreign Trade Zone (FTZ)



### PRIOR NOTICE EXEMPTIONS:

The following classes of food products are exempted from the PN reporting requirements.

- Meat, poultry and egg products subject to the exclusive jurisdiction of the USDA.
- Homemade goods shipped as gifts
- Personal use food accompanying a traveler
- Food that is immediately exported (IE, in-bond type 63)