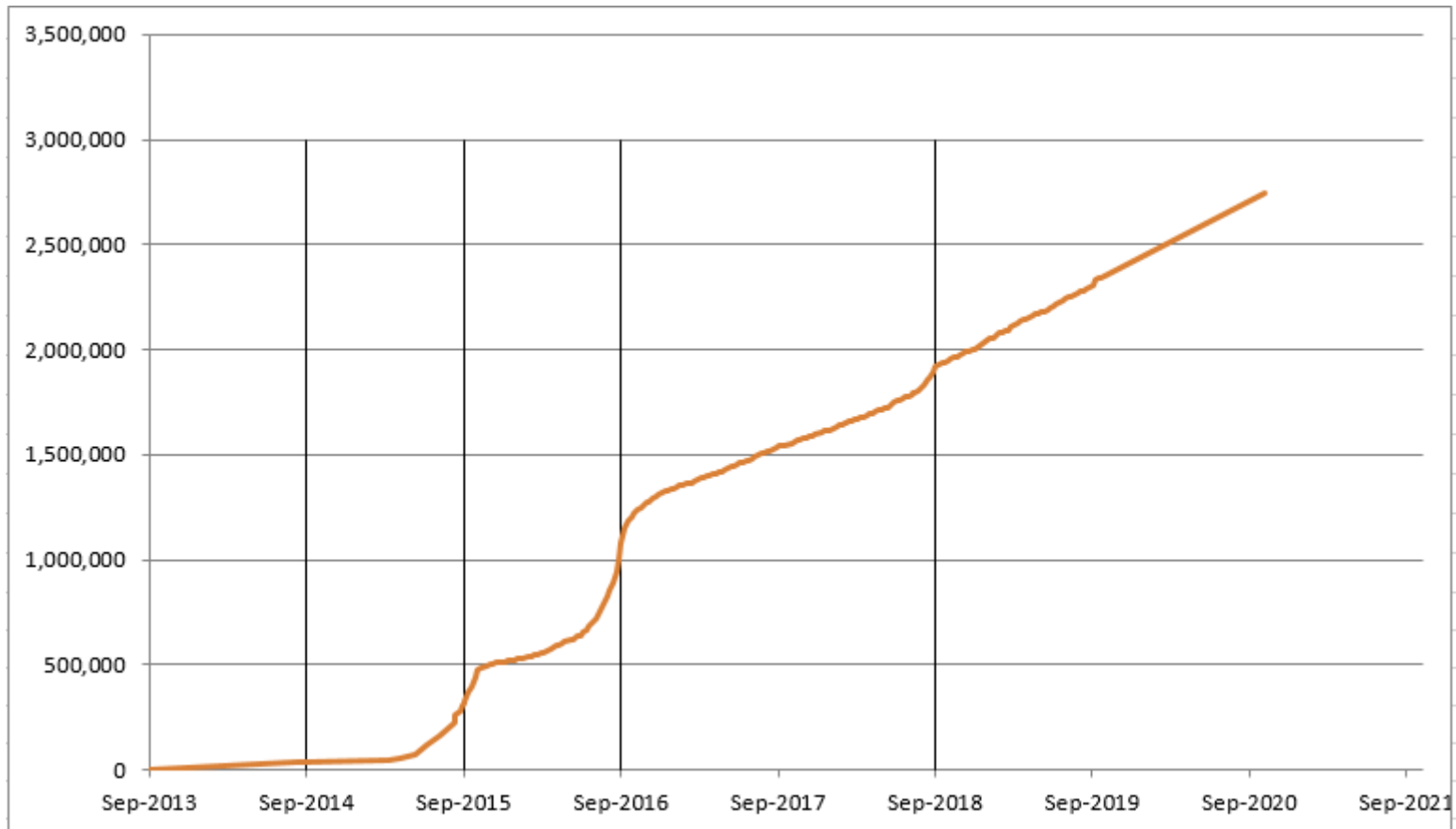


GUDID Records and Submission Compliance Dates

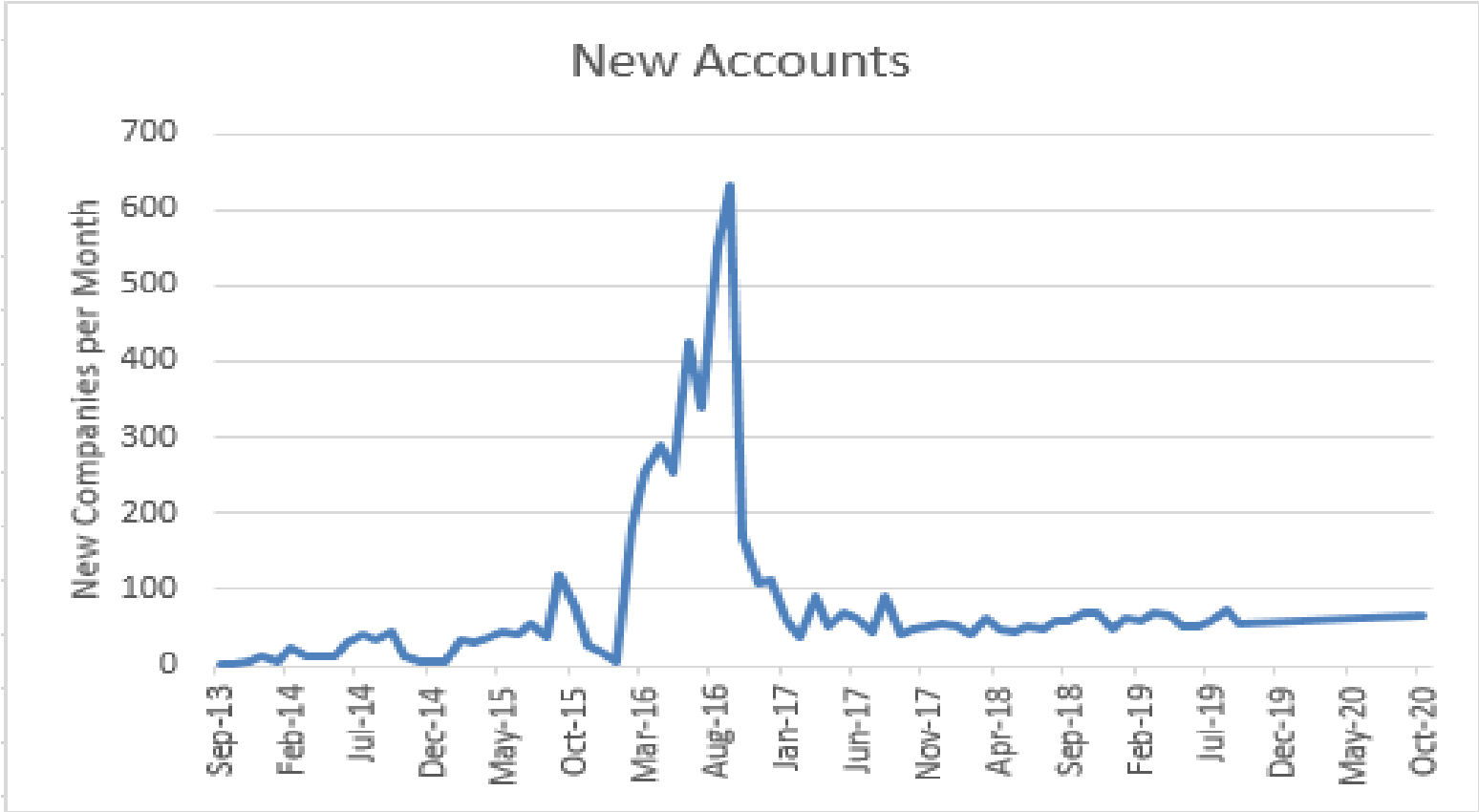


Data Current as of October 30, 2020



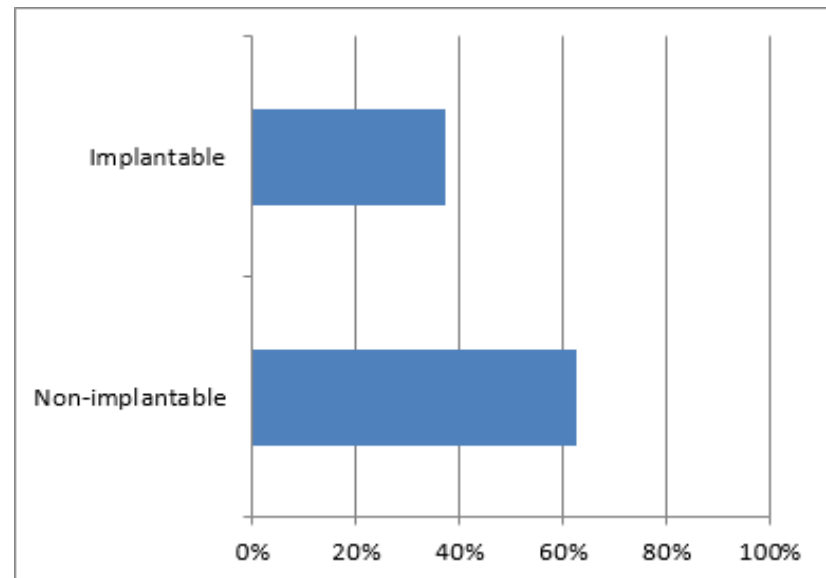
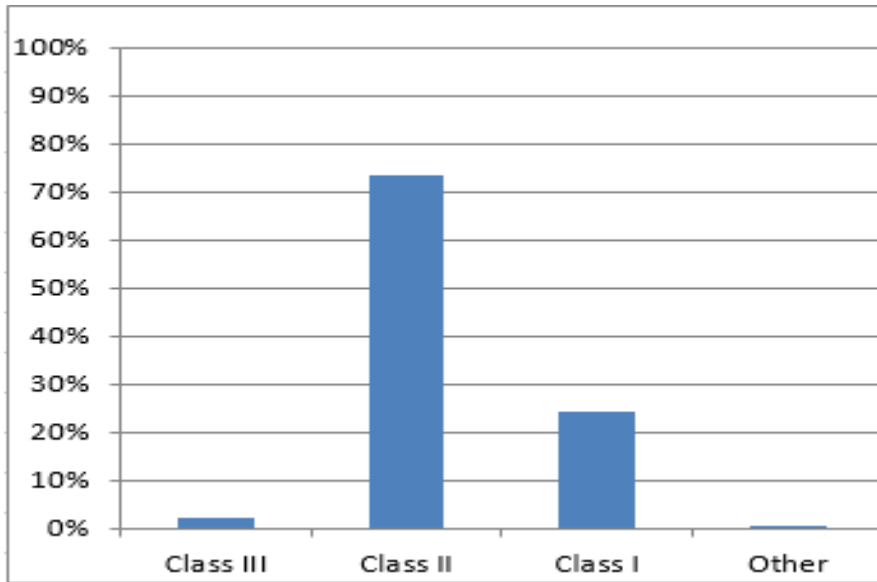
New Companies in GUDID Each Month

Data Current as of October 30, 2020



Most GUDID Records are Class II; About 40% are Associated with Implantables

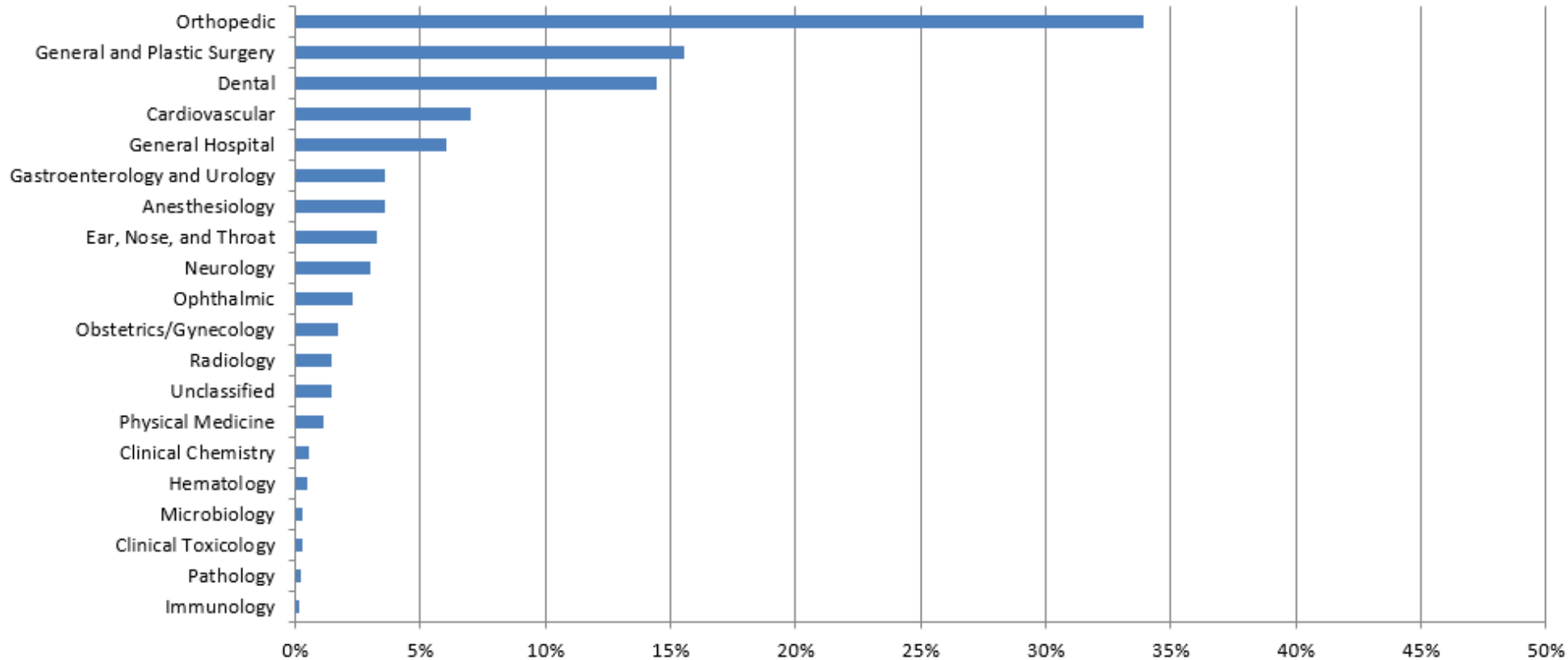
*“Implantable” Devices are those Assigned FDA Product Codes Associated with Implantable Devices, Systems and Accessories
Data Current as of October 30, 2020*



Medical Specialties in GUDID

Data Based on FDA Product Codes

Data Current as of October 30, 2020



GUDID Labeler Locations by Country

Data Current as of October 30, 2020

