

1

**Activate your kit online at [color.com/covid-activate](https://color.com/covid-activate).**

You will need the barcode found in your kit. Look for the blue card.



**Warning:** Your sample will not be tested if the kit is not activated.

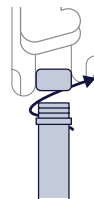
2

**Wash your hands thoroughly for 20 seconds, then dry your hands before starting the collection.**

3

**Unscrew the lid of the collection tube.**

Keep the lid nearby.

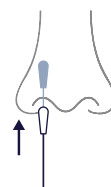


5

**Rotate swab tip in first nostril, 3 times.**

Insert it into one nostril just until the soft tip is no longer visible, about 1 inch. Rotate it in a circle around the inside edge of your nostril at least 3 times.

**Note:** Do not force the swab any further.



7

**Put swab into the collection tube.**

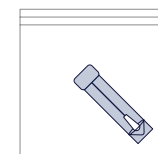
The soft tip of the swab that went into your nose should go into the tube first.



9

**Put collection tube into the biohazard bag.**

Close the bag with the adhesive seal.



11

**Put the box into the FedEx bag provided.**

Remove the adhesive strip and seal the FedEx bag closed. This packaging is specially designed for carrying samples suspected of carrying infectious substances. Do NOT replace it.

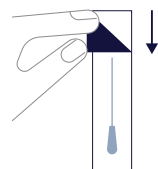
**Note:** Your return shipping has already been paid.

4

**Open the swab package.**

Starting from the handle end of the swab package, peel open the paper backing. Pull swab out of its packaging by the handle.

**Note:** Do not touch the soft tip with your hands or lay it down on any surface.

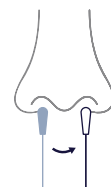


6

**Rotate swab tip in other nostril, 3 times.**

Repeat the previous step in the second nostril, using the same end of the swab.

**Note:** You will use the same swab for both nostrils.

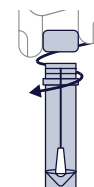


8

**Screw on the top of the collection tube.**

You're almost done! Make sure the top is screwed on tightly.

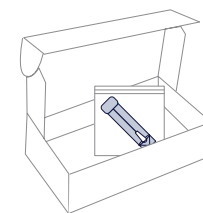
**Note:** Wash your hands thoroughly for 20 seconds then dry your hands before packaging the collected sample.



10

**Put biohazard bag into the box.**

No need to use any tape. Just tuck the top in securely.



12

**Return kit at any FedEx drop box.**

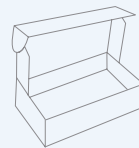
Find the closest location and latest pickup times at [color.com/fedex-dropbox](https://color.com/fedex-dropbox). Your sample must be dropped off on the same day you collect it. Do NOT take the sample to a FedEx office.

**Note:** If you miss today's last pickup time, contact [support@color.com](mailto:support@color.com) to get a new kit.

## Before you get started:

- Your sample must be dropped off at a FedEx drop box on the same day you collect it.
- **Do it on a weekday.** FedEx won't accept samples on a Saturday or Sunday.
- **Don't miss the last pickup.** Find the latest pickup times at [color.com/fedex-dropbox](https://color.com/fedex-dropbox).
- Make sure you wash your hands!

## Your kit includes:



Box



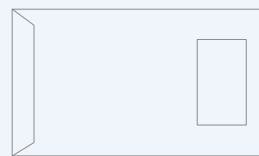
Swab and collection tube



Biohazard bag



Barcode card



FedEx bag with return label

## Checklist before returning your kit:

- Did you activate your kit?
- Did you collect a sample from both nostrils?

Visit [color.com/sample-return](https://color.com/sample-return) to learn more.

## Questions?

Visit [support.color.com](https://support.color.com) or contact us at [support@color.com](mailto:support@color.com) or (844) 352-6567.

For Rx Use Only, For IVD Use Only, For Emergency Use Authorization Only  
This home collection kit has not been FDA cleared or approved. This home collection kit has been authorized by FDA under an EUA.

This home collection kit has been authorized only for the home collection and maintenance of nasal specimens as an aid in detection of nucleic acid from SARS-CoV-2, not for any other viruses or pathogens.

This home collection kit is only authorized for the duration of the declaration that circumstances exist justifying the authorization of emergency use of in vitro diagnostics for detection and/or diagnosis of COVID-19 under Section 564(b)(1) of the Act, 21 U.S.C. § 360bbb-3(b)(1), unless the authorization is terminated or revoked sooner.

# color

## COVID-19 Test Unmonitored Collection Kit

At-home Instructions

color

For In Vitro Diagnostic Use, For Rx only, For Use Under Emergency Use Authorization Only