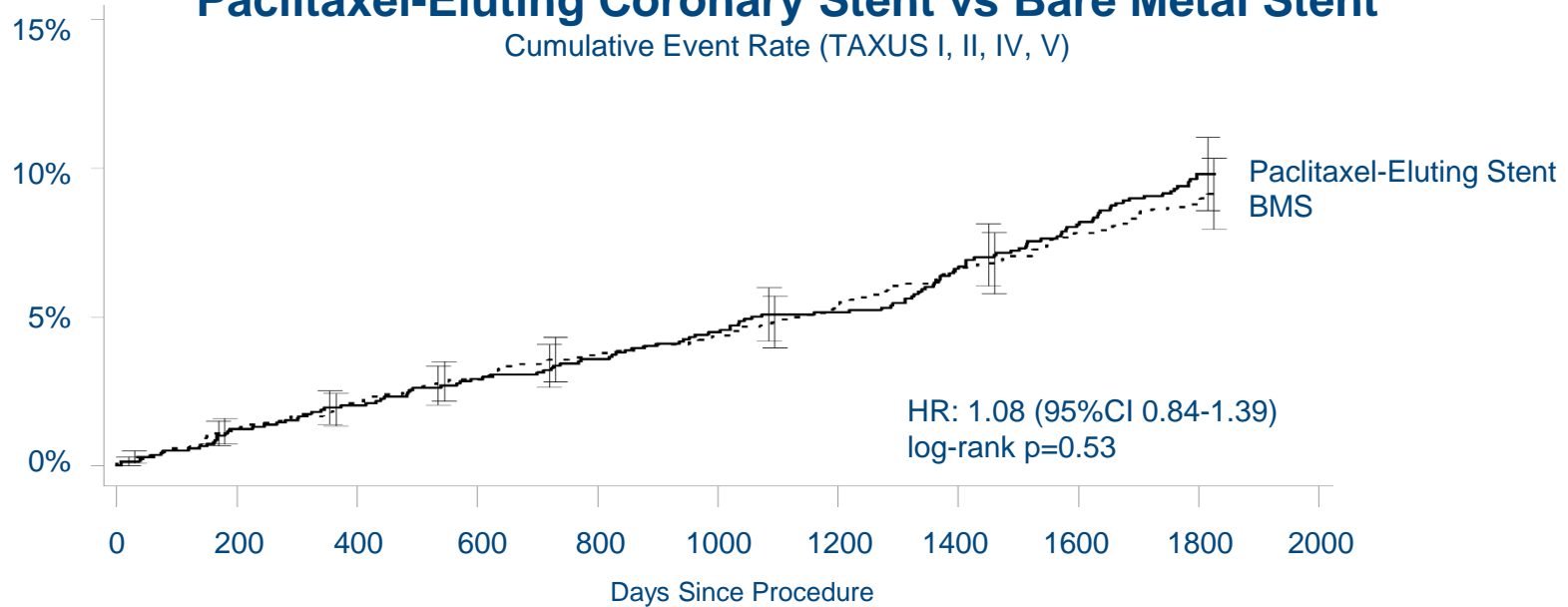


5-Year Patient-Level Meta-Analysis of TAXUS in ~2800 CAD Patients

Paclitaxel-Eluting Coronary Stent vs Bare Metal Stent

Cumulative Event Rate (TAXUS I, II, IV, V)



At risk:	0	180	365	545	730	1095	1460	1825
BMS	1397	1388	1370	1349	1328	1311	1262	1210
PES	1400	1389	1366	1345	1322	1304	1252	1192

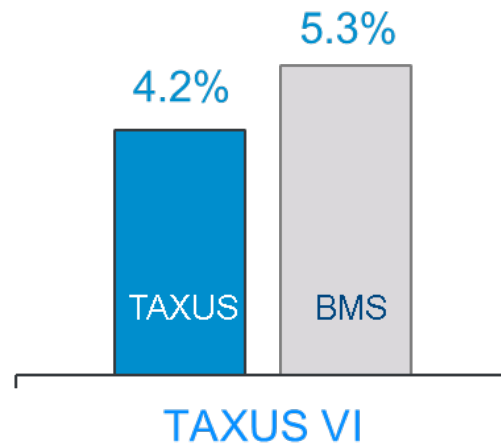
Follow Up at 5 Years: TAXUS I = 100%, TAXUS II = 95%, TAXUS IV = 95%, TAXUS V = 83%

Total Paclitaxel Dose = 50-406 µg

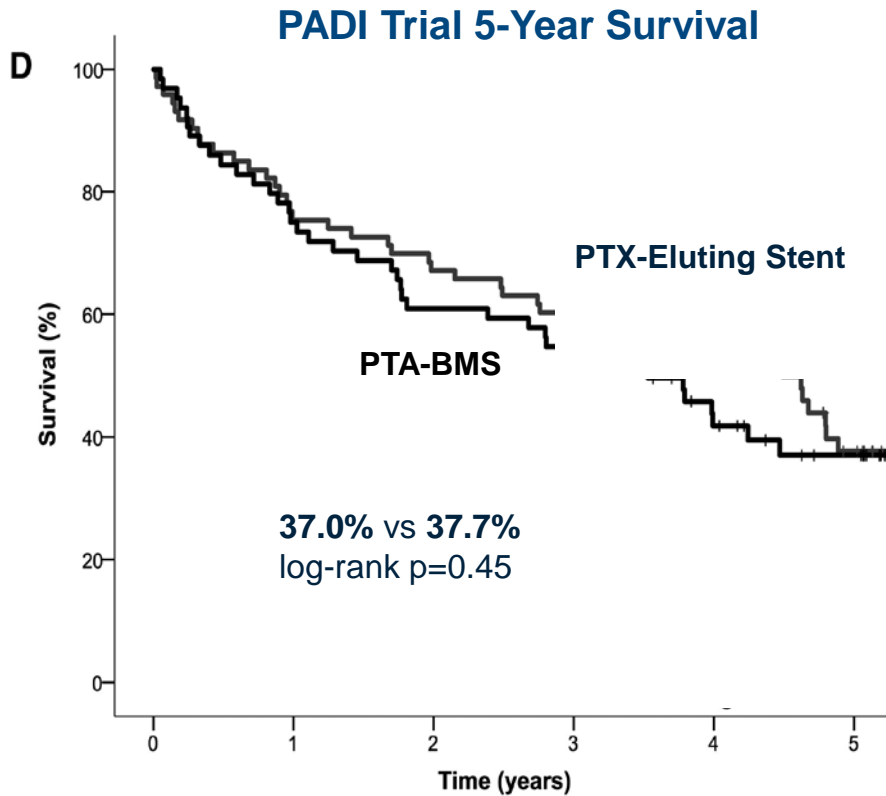
Follow Up: 99% at 5 Years

Total Paclitaxel Dose = 156-1275 μ g

Long Coronary Lesions All-Cause Mortality 5 Year Follow-up



5-Year Follow-up of TAXUS for High-Risk PAD (Critical Limb Ischemia)



No. at risk

DES	73	55	49	43	34	17
PTA-BMS	64	48	39	33	21	13

Evaluable: 22% at 5 Years

Total Paclitaxel Dose =
220-672 μg

Dose-Benefit with ELUVIA Drug Eluting Stent

	Total Paclitaxel Dose (μg)	Clinically-Driven TLR
Eluvia: IMPERIAL RCT	135-652	12.9% (2 Years)
Eluvia: IMPERIAL Long Lesion	517-1034	13.6% (2 Years)
TAXUS: Stone Meta-analysis	50-406	12.3% (5 Years)
TAXUS: TAXUS VI Long Lesion	156-1275	14.6% (5 Years)

$NNT_{(2\text{ YEARS})}$ avoid clinically driven TLR = 7 pts

$NNH_{(2\text{ YEARS})}$ experience mortality event = 98 pts