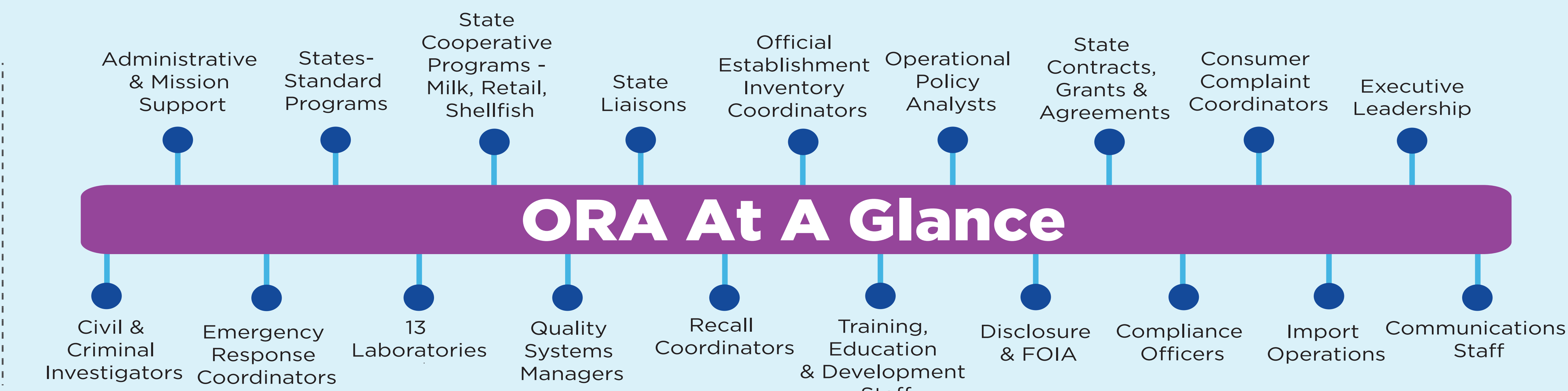
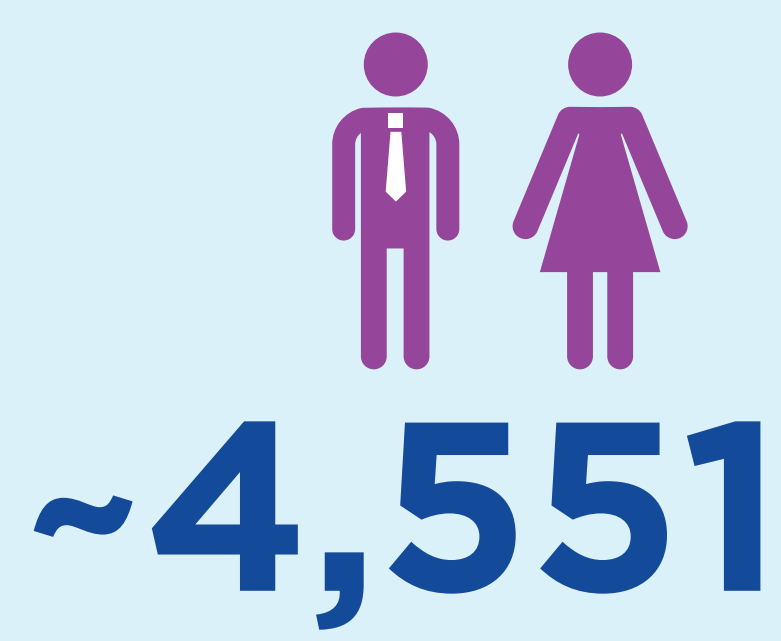


ORA Facts

ORA Maximizes Compliance of FDA Regulated Products
and Minimizes Risks Associated with Those Products

ORA Employees



Regulatory and Public Health Partnerships

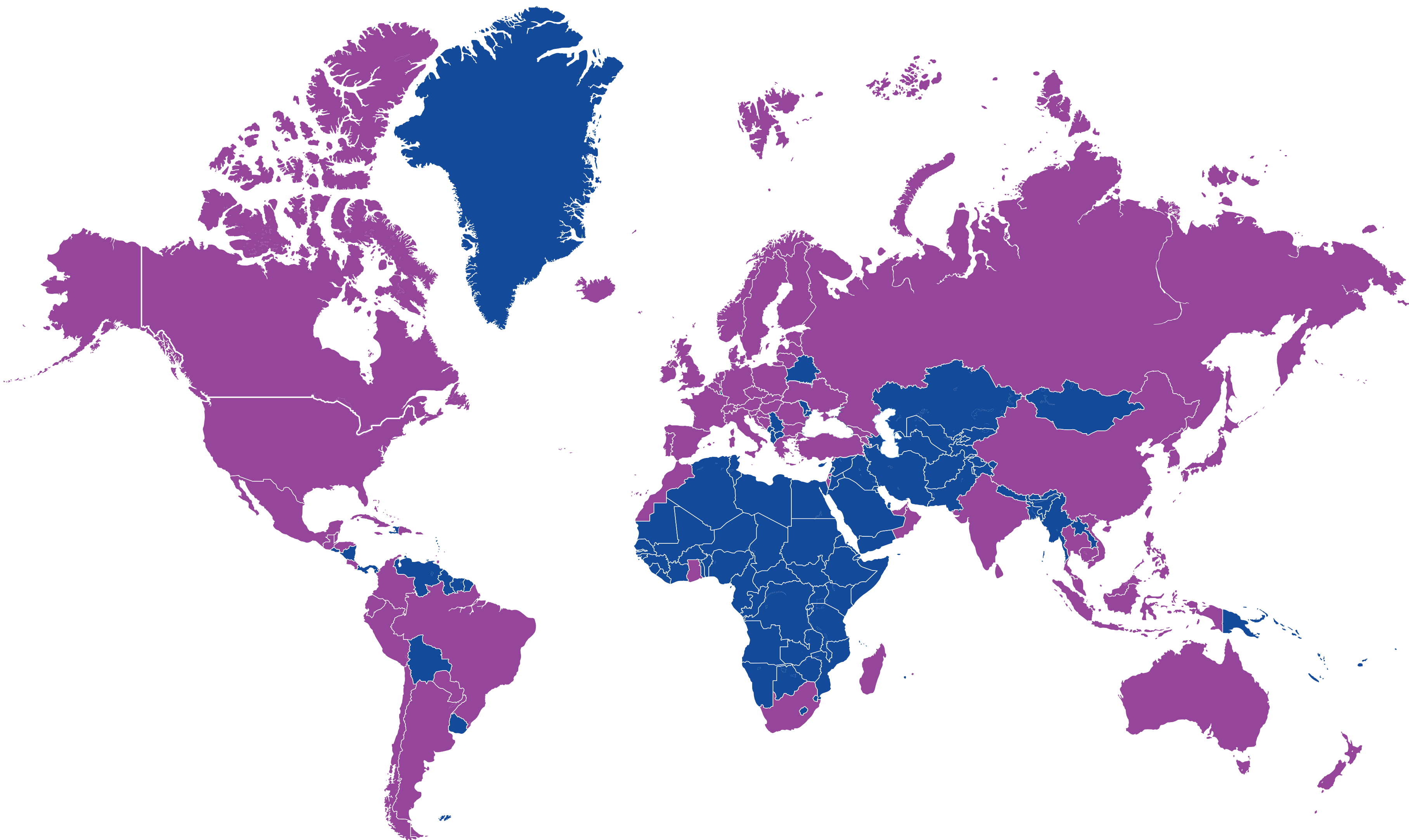
Expanded our federal, state, local, tribal and territorial regulatory and public health partnership efforts



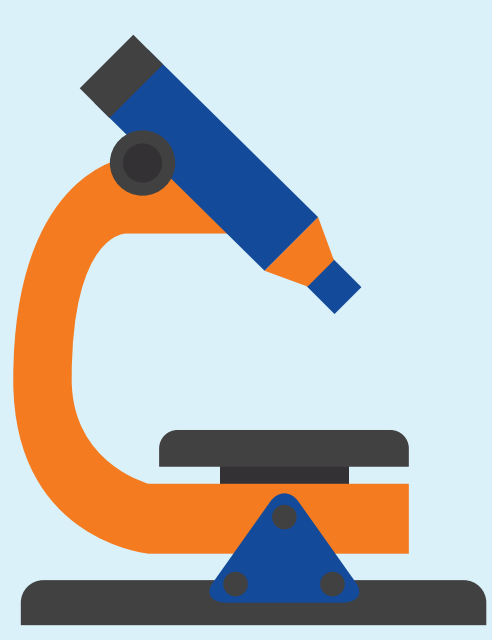
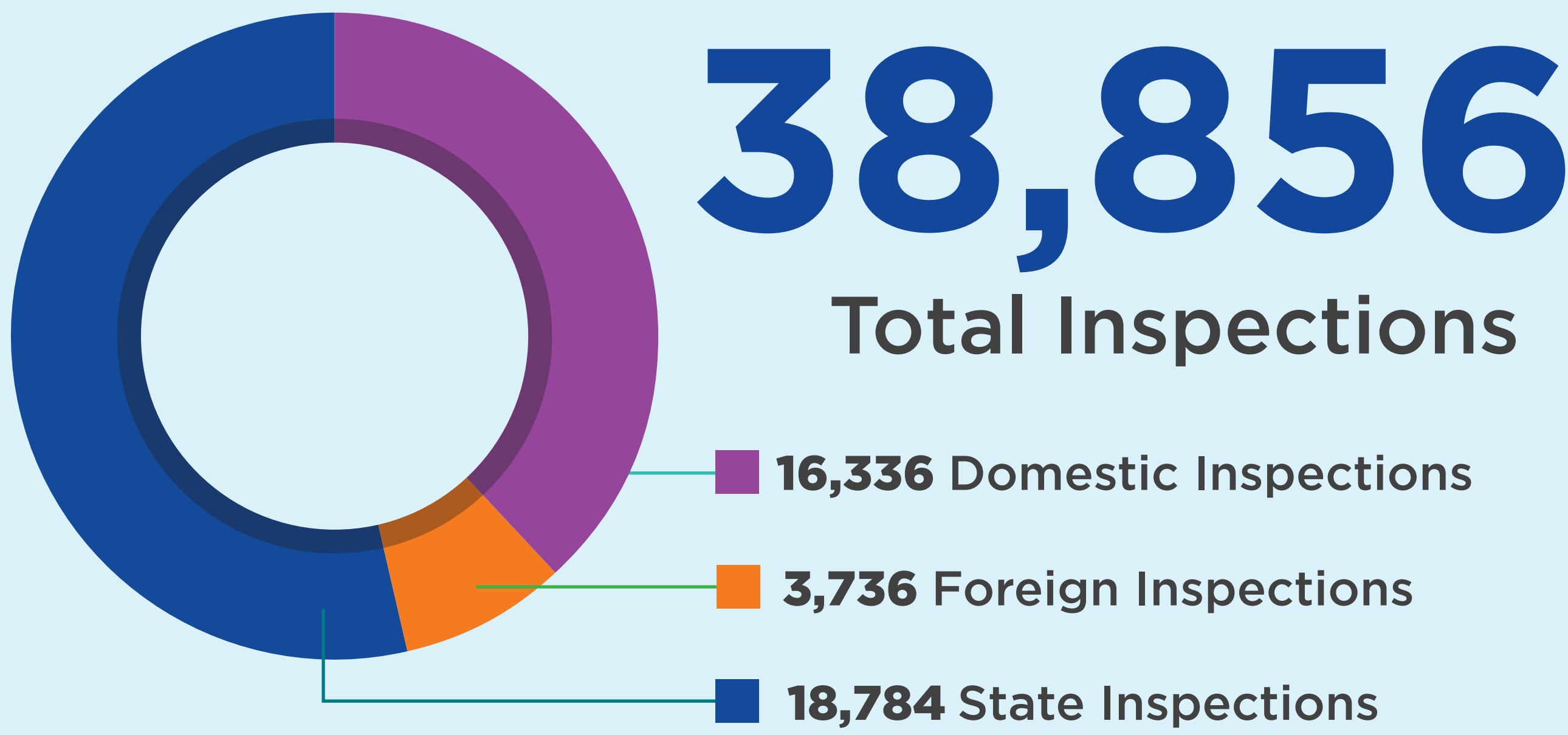
Inspections: ORA's Global Reach

ORA's Global Inspections:

Andorra	Ecuador	Lithuania	South Africa
Argentina	Estonia	Macao	Spain
Armenia	Finland	Madagascar	Sri Lanka
Australia	France	Malaysia	Sweden
Austria	Georgia	Malta	Switzerland
Bahamas	Germany	Mauritius	Taiwan
Barbados	Ghana	Mexico	Thailand
Belgium	Greece	Monaco	Trinidad & Tobago
Belize	Grenada	Morocco	Turkey
Bosnia-Herzegovina	Guatemala	Netherlands	Ukraine
Brazil	Honduras	New Zealand	United Arab Emirates
Bulgaria	Hong Kong SAR	Norway	United Kingdom
Cambodia	Hungary	Oman	United States
Canada	Iceland	Paraguay	Vietnam
Chile	India	Peru	
China	Indonesia	Philippines	
Colombia	Ireland	Poland	
Costa Rica	Israel	Portugal	
Croatia	Italy	Romania	
Cuba	Jamaica	Russia	
Czech Republic	Japan	Singapore	
Denmark	Korea (the Republic of)	Slovakia	
Dominican Republic	Latvia	Slovenia	



Inspections



43,099

Samples Collected & Analyzed

IMPORTS

A line is a distinct product within a shipment. A single shipment may include multiple lines.

43,606,426
Import Lines

Criminal Investigations

Enforcement



14,285

Warning Letters Issued

*Includes 13,928 warning letters issued by the Center for Tobacco Products



7,562

Recalled Products



14

Injunctions



1

Seizure



231

Import Alerts

Allow FDA to detain future shipments of potentially violative products without testing or examination



317

OCI Arrests



\$114,163,550

OCI Assets Forfeited and Seized



215

OCI Convictions



\$2,182,317,876

OCI Fines and Restitution