

Individuals using assistive technology may not be able to fully access the information contained in this file. For assistance, please send an e-mail to: ocod@fda.hhs.gov and include 508 Accommodation and the title of the document in the subject line of your e-mail.

Blood Grouping Reagent

IH-Card Group ABO

A-B-A-B-A-B

FOR IN VITRO DIAGNOSTIC USE
Gel card for use with the IH-System
MEETS FDA POTENCY REQUIREMENTS
U.S. LICENSE NUMBER: 1845
Rx only

Product-Identification: 71060

IH-Card Group ABO:

[VOL] 12 cards per box

[REF] 813170100

[VOL] 48 cards per box

[REF] 12012727

INTENDED USE

The IH-Card Group ABO is intended for the detection of A (ABO1) and B (ABO2) antigens on human red blood cells using the IH-System.

SUMMARY

Between 1900 and 1902, Landsteiner and associates discovered the ABO system of red blood cell antigens. The importance of this discovery is the recognition that antibodies are present when the corresponding antigens are lacking. The ABO system is the only blood group system in which the reciprocal antibodies are consistently and predictably present in most people. Testing with Anti-A and Anti-B is used to determine the presence or absence of A (ABO1) and/or B (ABO2) blood group antigens on human red blood cells.

The IH-Card Group ABO is suitable for the detection of ABO antigens by direct agglutination.

PRINCIPLES OF THE TEST

The test combines the principles of hemagglutination and gel filtration for detection of blood group antigen-antibody reactions.

The test sample (red blood cell suspension) is distributed into the microtubes containing the appropriate reagent(s). After centrifugation non-agglutinated red blood cells are collected at the bottom of the microtube while the agglutinates are dispersed throughout the length of the gel, depending upon their size. Their position in the gel determines the intensity of the reaction.

REAGENTS

[IVD]

OBSERVABLE INDICATIONS

Bubbles trapped in the gel, drying of the gel, artifacts, or open or damaged seals may indicate product alteration.

NOTE: INSPECT THE CONDITION OF THE CARDS BEFORE USE (SEE PRECAUTIONS).

IH-Card Group ABO consists of six microtubes containing Anti-A and Anti-B. Anti-A and Anti-B blood grouping reagents are provided in a final buffered gel suspension. Anti-A has been colored with FD & C Blue #1 and Anti-B has been colored with FD & C Yellow #5. The Anti-B monoclonal antibody (X9) does not react with acquired B cells. This reagent contains bovine albumin.

Reagent	Source	Antibody Class	Cell lines	Manufacturer
Anti-A	Murine Monoclonal	IgM	15750F7	Bio-Rad
Anti-B	Murine Monoclonal	IgG3	X9	Bio-Rad
Anti-A	Murine Monoclonal	IgM	15750F7	Bio-Rad
Anti-B	Murine Monoclonal	IgG3	X9	Bio-Rad
Anti-A	Murine Monoclonal	IgM	15750F7	Bio-Rad
Anti-B	Murine Monoclonal	IgG3	X9	Bio-Rad

Preservative: Sodium Azide (0.1%)

The bovine albumin used for the production of this reagent is purchased from BSE-free sources.

Each card contains six microtubes. Depending on the test profile, individual wells of this card can be used by carefully peeling off the aluminum foil from the individual microtubes.

STORAGE REQUIREMENTS

- Store at 18 to 25°C.
- Do not use beyond expiry on the label, which is expressed as YYYY-MM-DD (Year-Month-Day).
- Store in an upright position.
- Do not freeze or expose cards to excessive heat.
- Do not store near any heat, air conditioning sources or ventilation outlets.

PRECAUTIONS

- All IH-System reagents and test samples must be brought to room temperature (18 to 25°C) prior to use.
- Do not use cards showing signs of drying, discoloration, bubbles, crystals or other artifacts.
- Do not use cards with damaged foil strips.
- Use reagents as furnished.
- Do not use gel cards if the gel matrix is absent or if the liquid level in the microtube is not at or below the gel matrix. A clear liquid layer should be visible on top of the uniform gel matrix in each microtube.
- Cards with dispersed drops observed at the top of the microtube, due to improper storage or shipping conditions, have to be centrifuged with the IH-Centrifuge L or IH-Reader 24 with preset time and speed before use. If drops are still observed on top of the microtube after one centrifugation it is recommended to not use the card.
- The use of diluents other than IH-LISS for the red blood cell suspension may modify the reaction and lead to incorrect test results.
- The use of volumes and/or red blood cell suspension in concentrations other than those indicated in the method, may modify the reaction and lead to incorrect test results, i.e., false positive or false negative results.
- Once the IH-Card has been used for testing, it may contain infectious material and should therefore be handled and disposed of as biohazardous waste in accordance with local, state and national requirements.
- Warning: Contains sodium azide, which may react with lead or copper plumbing to form explosive azides. If discarded in the sink, flush with large amounts of water to prevent the buildup of explosive metal azides.
- Consult downloads.bio-rad.com to download the valid version of this instruction for use.

SPECIMEN COLLECTION AND PREPARATION

No special preparation of the patient or donor is required prior to specimen collection. Blood samples should be collected following general blood sampling guidelines.

Fresh blood samples collected in anticoagulant are acceptable. Samples should be tested as soon as possible post collection. If testing is delayed, EDTA samples may be stored at 2 to 8°C for up to ten (10) days when tested manually and five (5) days when tested on automated systems. In case of testing with samples without anticoagulant only manual testing is accepted and if testing is delayed, these samples may be stored at 2 to 8°C for up to ten (10) days.

On automated systems, if testing is delayed, donor blood collected in CPD or CP2D may be tested up to expiration date of the unit when stored at 1 to 8°C. Donor blood stored in additive solutions AS-1 or AS-3 may be tested up to thirty (30) days post collection when stored at 1 to 8°C. Cord blood samples may be stored at 2 to 8°C up to five (5) days post

collection for automated testing.

For manual testing, if testing is delayed, donor blood collected in CPD, CP2D and CPDA-1 and donor blood stored in additive solutions AS-1 or AS-3 may be tested up to expiration date indicated on the label of the unit when stored at 1 to 8°C. Cord blood samples may be stored at 2 to 8°C up to ten (10) days post collection for manual testing.

Do not use grossly hemolyzed, lipemic or icteric samples.

A distinct separation of red blood cells and plasma is recommended for optimal results. This can be achieved through centrifugation at 10 minutes at 2000g or at a time and speed that consistently produces a distinct cell/plasma interface. Donor segments do not require centrifugation.

TEST PROCEDURE FOR MANUAL AND AUTOMATED SYSTEMS

Material provided

- IH-Card Group ABO

Materials required but not provided

- IH-LISS Rack or IH-LISS Solution
- Dispenser pipette capable of delivering 1 mL
- Pipettes: 10 µL, 50 µL and 1 mL
- Disposable pipette tips
- Glass or plastic test tubes
- IH-Centrifuge L or IH-Reader 24 to centrifuge the IH-Cards at 85g with pre-set time manual working
- IH-1000 or IH-500 for full automation

Method for automation

Please refer to the IH-1000, IH-500 and IH-Com User Manual for U.S. for testing and reagent handling instructions.

Method for manual testing

Refer to the IH-Centrifuge L User Manual U.S. or IH-Reader 24 User Manual and IH-Com User Manual U.S. for equipment operating instructions.

Prior to use prepare a red blood cell suspension of approximately 1% to be tested in IH-LISS Solution

- Transfer 1 mL of IH-LISS Solution to a labelled disposable tube
- Add 10 µL of red blood cell pellet
- Mix gently
- The red blood cell suspension is ready for use

Note: Red blood cell suspension should be used as soon as possible. If it is not possible red blood cell suspension must be used within 24 hours.

- Allow reagents and samples to reach room temperature (18 to 25 °C) before use.
- Inspect the condition of the cards before use (see Warnings and Precautions).
- Label the gel card appropriately.
- Withdraw the entire foil seal from the card or from the individual microtubes to be used for testing. Carefully peel off the aluminium foil to prevent cross-contamination of the microtube contents.

Note: Once the foil has been removed from the microtubes, testing must be initiated to prevent drying of the gel.

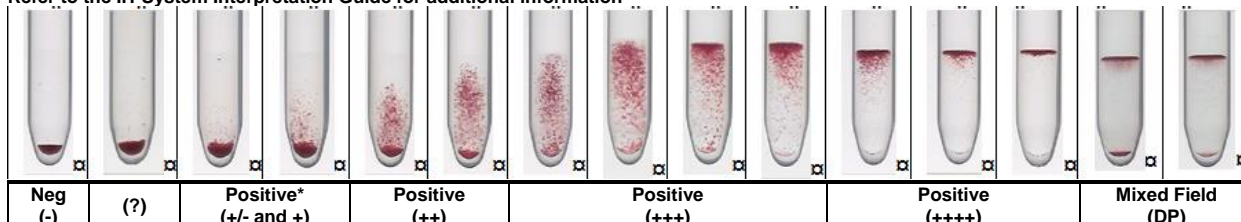
- Ensure the resuspension of the red blood cells before use.
- Distribute 50 µL of red blood cell suspension (approximately 1%) into the appropriate wells of microtubes.
Note: Carefully dispense the red blood cell suspension and the serum or plasma, avoiding contact of the pipette tip with the contents of the microtubes to prevent carryover.
- Centrifuge in the IH-Centrifuge L or IH-Reader 24 at the pre-set conditions as determined by the manufacturer.
- Read the reactions by visual inspection or automatically with the IH-Reader 24.

INTERPRETATION OF RESULTS

For visual interpretation

- Positive result** - Agglutinates on the surface of or dispersed through the gel. Report as a positive test result if hemolysis is present in the microtube but not in the sample column. Red blood cells may remain suspended on the top of the gel or are dispersed throughout the gel in varying degrees. A few cells may form a button in the microtube bottom in some positive reactions.
- Negative result** - A compact button of red blood cells at the microtube bottom is a negative test result.

Refer to the IH-System Interpretation Guide for additional information



*A very weak reaction is not an expected result for antigen testing. It may indicate that a false positive or a very weak/partial expression of the antigen is present. Further investigation of this sample should be performed before the antigen status is determined.

Well Reaction Grade	Result Interpretation	Reaction Description
-	Negative	A compact, pellet of RBCs* with a smooth surface at the bottom of the well with no visible agglutination.
+/-	Blood Grouping and Phenotyping including Anti-D Blend = Not interpretable For Reverse (serum) ABO Testing = Positive Direct Antiglobulin Test, Antibody Detection, Autocontrol = Positive Antibody Identification = no overall result interpretation, only well result shown as +/- For Crossmatching = Incompatible	A pellet of RBCs at the bottom of the well with a very few agglutinated RBCs visible above the pellet or an irregular pellet.
+	For Blood Grouping and Phenotyping including Anti-D Blend = Not interpretable For Reverse (serum) ABO Testing = Positive For Antibody Detection and DAT = Positive For Antibody Identification = no overall result interpretation, only well result shown as positive For Crossmatching = Incompatible	A pellet of RBCs at the bottom of the well with agglutinated RBCs visible in the lower half of the gel column.
++	For Blood Grouping and Phenotyping including Anti-D Blend = Positive For Reverse (serum) ABO Testing = Positive For Antibody Detection and DAT = Positive For Antibody Identification = no overall result interpretation, only well result shown as positive For Crossmatching = Incompatible	Agglutinated RBCs distributed throughout the entire length of the gel column, with no line of RBCs on the top of the well.
+++	For Blood Grouping and Phenotyping including Anti-D Blend = Positive For Reverse (serum) ABO Testing = Positive For Antibody Detection and DAT = Positive For Antibody Identification = no overall result interpretation, only well result shown as positive For Crossmatching = Incompatible	Most agglutinated RBCs concentrated at the top of the gel or upper half of the gel column.

Well Reaction Grade	Result Interpretation	Reaction Description
++++	For Blood Grouping and Phenotyping including Anti-D Blend = Positive For Reverse (serum) ABO Testing = Positive For Antibody Detection and DAT = Positive For Antibody Identification = no overall result interpretation, only well result shown as positive For Crossmatching = Incompatible	Agglutinated RBCs concentrated as a line on the top of the gel column with a few agglutinated RBCs just underneath the gel surface.
Mixed Field (DP)	Blood Grouping and Phenotyping including Anti-D Blend = Not interpretable For Reverse (serum) ABO Testing = Positive Direct Antiglobulin Test, Antibody Detection, Autocontrol = Positive Antibody Identification = no overall result interpretation, only well result shown as DP For Crossmatching = Incompatible	Agglutinated RBCs as a line at the top of the gel or dispersed in upper part of the gel and non-agglutinated RBCs forming a pellet at the bottom of the well. The instrument interpretation software displays "DP" (double population) for a mixed field result.
?	For Blood Grouping including Reverse ABO Testing and Phenotyping including Anti-D Blend, Antibody Detection and Identification, Direct Antiglobulin Testing = Not interpretable For Crossmatching = Incompatible	Ambiguous result.

For automated reading

Below is a description of the various reaction grades and how the software uses that well reaction to determine the result interpretation. Please refer to the IH-Reader 24 User Manual or IH-1000, IH-500 and IH-Com User Manual U.S. for further information.

Well Reaction Grade	Result Interpretation	Reaction Description
-	Negative	A compact, pellet of RBCs* with a smooth surface at the bottom of the well with no visible agglutination.
+/-	Blood Grouping and Phenotyping including Anti-D Blend = Not interpretable For Reverse (serum) ABO Testing = Positive Direct Antiglobulin Test, Antibody Detection, Autocontrol = Positive Antibody Identification = no overall result interpretation, only well result shown as +/- For Crossmatching = Incompatible	A pellet of RBCs at the bottom of the well with a very few agglutinated RBCs visible above the pellet or an irregular pellet.
+	For Blood Grouping and Phenotyping including Anti-D Blend = Not interpretable For Reverse (serum) ABO Testing = Positive For Antibody Detection and DAT = Positive For Antibody Identification = no overall result interpretation, only well result shown as positive For Crossmatching = Incompatible	A pellet of RBCs at the bottom of the well with agglutinated RBCs visible in the lower half of the gel column.
++	For Blood Grouping and Phenotyping including Anti-D Blend = Positive For Reverse (serum) ABO Testing = Positive For Antibody Detection and DAT = Positive For Antibody Identification = no overall result interpretation, only well result shown as positive For Crossmatching = Incompatible	Agglutinated RBCs distributed throughout the entire length of the gel column, with no line of RBCs on the top of the well.
+++	For Blood Grouping and Phenotyping including Anti-D Blend = Positive For Reverse (serum) ABO Testing = Positive For Antibody Detection and DAT = Positive For Antibody Identification = no overall result interpretation, only well result shown as positive For Crossmatching = Incompatible	Most agglutinated RBCs concentrated at the top of the gel or upper half of the gel column.
++++	For Blood Grouping and Phenotyping including Anti-D Blend = Positive For Reverse (serum) ABO Testing = Positive For Antibody Detection and DAT = Positive For Antibody Identification = no overall result interpretation, only well result shown as positive For Crossmatching = Incompatible	Agglutinated RBCs concentrated as a line on the top of the gel column with a few agglutinated RBCs just underneath the gel surface.
Mixed Field (DP)	Blood Grouping and Phenotyping including Anti-D Blend = Not interpretable For Reverse (serum) ABO Testing = Positive Direct Antiglobulin Test, Antibody Detection, Autocontrol = Positive Antibody Identification = no overall result interpretation, only well result shown as DP For Crossmatching = Incompatible	Agglutinated RBCs as a line at the top of the gel or dispersed in upper part of the gel and non-agglutinated RBCs forming a pellet at the bottom of the well. The instrument interpretation software displays "DP" (double population) for a mixed field result.
?	For Blood Grouping including Reverse ABO Testing and Phenotyping including Anti-D Blend, Antibody Detection and Identification, Direct Antiglobulin Testing = Not interpretable For Crossmatching = Incompatible	Ambiguous result.

* RBCs = Red Blood Cells

Expected reactions with Anti-A and Anti-B are shown in the following table:

Blood Group	Anti-A	Anti-B
A	positive	negative
B	negative	positive
AB	positive	positive
O	negative	negative

- A control test to detect spontaneous agglutination is not essential in routine testing because the IH-System Monoclonal Blood Grouping Reagents do not contain ingredients that enhance spontaneous agglutination of immunoglobulin-coated red blood cells. In some circumstances, a false positive test result may occur due to strong cold autoagglutinins or to a protein imbalance causing the formation of rouleaux. In such cases, similar phenomena would be likely to occur in tests with all the IH System Monoclonal Blood Grouping Reagents. If all blood grouping results for a given sample are positive, a control may be indicated. The IH-Card Control can be used for this purpose. If the control test is positive, laboratories are advised to consult their approved site-specific procedures. The test cells can be washed several times in warm saline and retested.¹ If the control test again gives a positive reaction, a valid interpretation of the results obtained cannot be made. Additional testing will be necessary to resolve the false positive reaction according to site-specific procedures.
- Caution must be taken in interpreting a reaction as a mixed field. Additional patient history and testing may be necessary for resolution. Not all mixed field populations have a sufficient minor population to be detected.

STABILITY OF REACTIONS

For visual reading of reactions, best results are obtained within six (6) hours of centrifugation. Interpretation may be affected by drying of the gel, hemolysis of red blood cells and slanting of reaction patterns due to storage in a non-upright position. Processed cards that are stored in the refrigerator (2 to 8°C) and properly sealed to protect from evaporation may be interpreted for up to one (1) day. Gel cards should not be interpreted after the first sign of drying, or if hemolysis is observed. The age and condition of red blood cells, as well as the temperature at which the card is stored, will affect how long cards can be stored. The presence of sodium azide in the gel may cause the red blood cells to become dark in color over time. This darkening does not interfere with the test result.

QUALITY CONTROL

On each day of use, the reactivity of all Blood Grouping Reagents should be confirmed by testing with known positive and negative samples. For example, the Blood Grouping Reagents contained on this card could be controlled by testing group AB and group O samples. Other combinations of ABO types are possible as long as there is a positive and negative control for each reagent. Each reagent is satisfactory for use if positive and negative samples react as expected. For additional information, please consult the IH-1000 or

IH-500 User Manual U.S. and the IH-Com User Manual U.S., Quality Control Sections.

LIMITATIONS

- Erroneous and abnormal results may be caused by:
 - Bacterial or chemical contamination of the blood specimens, reagents, supplementary materials and/or equipment.
 - Patient medication or disease yielding a cross-reaction.
 - A red blood cell concentration or suspension medium different from that recommended.
 - Incomplete re-suspension of the red blood cells.
 - Sample hemolysis prior to testing.
 - Contamination between microtubes through pipetting errors.
 - Use of procedure other than the one described above.
- Grossly icteric blood samples, blood samples with abnormally high concentrations of protein or blood samples from patients who have received plasma expanders of high molecular weight may give false positive results.
- Fibrin, clots, particulates or other artifacts may cause some red blood cells to be trapped at the top of the gel and may cause an anomalous result. They may appear as a pinkish layer. In a negative reaction the false appearance of a mixed field could lead to misinterpretation.
- A weak reaction is not an expected result for antigen typing and may be indicative of a false positive or weak/partial expression of the antigen. Further investigations may be warranted per site-specific procedures.
- If red blood cells (pellet at the bottom of the microtube) are too low in concentration, they become difficult to visualize, and, in certain cases, a weak positive reaction can fail to be detected.
- Very weak ABO subgroups may not be detected with the Anti-A and Anti-B reagents used in this gel card.
- The Anti-B reagent does not react with the acquired B antigen.
- The performance characteristics of this product with chemically modified, frozen/thawed or enzyme treated red blood cells have not been established.

Please refer to the IH-Reader 24 User Manual or IH-1000, IH-500 and IH-Com User Manual U.S. for instrument specific assay limitations.

SPECIFIC PERFORMANCE CHARACTERISTICS

The final release testing is performed according to the product specific Standard Operating Procedures. As part of the lot release process, each lot of Bio-Rad Blood Grouping Reagents is tested against antigen positive and negative samples to ensure suitable reactivity and specificity.

Performance characteristics using the IH-1000

Testing to determine the performance characteristics of the Bio-Rad IH Blood Grouping Reagents Anti-A and Anti-B was performed at four different US clinical sites and included patient, cord blood and donor samples. The positive and negative percent agreements were calculated for the Bio-Rad IH Blood Grouping Reagents in comparison to the FDA-licensed reference reagents. Microtube results for a given reagent were combined across applicable IH-Cards.

Results of the positive percent agreement and negative percent agreement, with the one-sided Exact 95% Lower Confidence Limit (LCL) are listed in the data table below. Note: See the IH-1000 User Manual U.S. and IH-Com User Manual U.S. for more information on verification of results.

Results from Clinical Trials

Test	Negative Agreement N	Negative Agreement (one-sided Exact 95% LCL)	Positive Agreement N	Positive Agreement (one-sided Exact 95% LCL)
Anti-A	4,392	99.91% (99.79%)	2,942	99.93% (99.79%)
Anti-B	6,172	100% (99.95%)	1,161	99.83% (99.46%)

Agreement between the methods does not imply which method obtained the correct result. The above results do not reflect any discrepancy resolution between the methods.

Reproducibility was evaluated at two external sites and one internal site by testing a reproducibility panel according to the following scheme: one lot of reagent x 3 sites x 1 operator x 5 non-consecutive days x 2 runs x 2 replicates over a period of 20 days using the IH-1000 Analyzer. Reproducibility was demonstrated for the Blood Grouping Reagents Anti-A and Anti-B within run, between runs and between sites.

A precision study was conducted internally using three reagent lots x 5 non-consecutive days x 2 runs x 2 replicates over a period of 20 days using the IH-1000 Analyzer. Precision was demonstrated with all three lots of Blood Grouping Reagents Anti-A and Anti-B.

Performance characteristics using the IH-500

Testing to determine the performance characteristics of the Bio-Rad IH Blood Grouping Reagents Anti-A and Anti-B using IH-500 v.2.1.14 was performed at three different US clinical sites and included patient and donor samples. The positive and negative percent agreements were calculated for the Bio-Rad IH Blood Grouping Reagents in comparison to the FDA-licensed reference reagents. Microtube results for a given reagent were combined across applicable IH-Cards.

Results of the positive percent agreement and negative percent agreement, with the one-sided Exact 95% Lower Confidence Limit (LCL) are listed in the data table below. Note: See the IH-500 User Manual U.S. and IH-Com User Manual U.S. for more information on verification of results.

Results from Clinical Trials with IH-500 v.2.1.14

Test	Sample type	Negative Agreement N	Negative Agreement (one-sided Exact 95% LCL)	Positive Agreement N	Positive Agreement (one-sided Exact 95% LCL)
Anti-A	Random samples	1,270	100% (99.76%)	993	100% (99.70%)
Anti-A	Known group B	255	100% (98.83%)	NA	NA
Anti-A	All samples	1,525	100% (99.80%)	993	100% (99.70%)
Anti-B	Random samples	1,914	99.95% (99.75%)	349	100% (99.15%)
Anti-B	Known group B	NA	NA	255	100% (98.83%)
Anti-B	All samples	1,914	99.95% (99.75%)	604	100% (99.51%)

NA = not applicable

Agreement between the methods does not imply which method obtained the correct result. The above results do not reflect any discrepancy resolution between the methods.

Reproducibility was evaluated at three external sites by testing a reproducibility panel according to the following scheme: one lot of reagent x 3 sites x 1 operator x 5 non-consecutive days x 2 runs x 2 replicates over a period of 20 days. Reproducibility for the Blood Grouping Reagents Anti-A and Anti-B using the IH-500 was demonstrated within runs, between run and between sites.

Internal comparison studies have been performed with IH-500 v.2.1.14 and IH-500 v.3.0. The study included testing of patient and donor samples as well as known samples. The results of positive percent agreement and negative percent agreement, as well as the one-sided Exact 95% Lower Confidence Limit (LCL), are listed in the data table below.

Results from In-House Study comparing IH-500 v.2.1.14 with IH-500 v.3.0

Test	Sample type	Negative Agreement N	Negative Agreement (one-sided Exact 95% LCL)	Positive Agreement N	Positive Agreement (one-sided Exact 95% LCL)
Anti-A	Random samples	436	100% (99.32%)	365	100% (99.18%)
Anti-A	Known group B	125	100% (97.63%)	NA	NA
Anti-A	Known group AB and Ax	2	100% (22.36%)	62	100% (95.28%)
Anti-A	All samples	563	100% (99.47%)	427	100% (99.30%)
Anti-B	Random samples	683	100% (99.56%)	115	100% (97.43%)

<u>Anti-B</u>	<u>Known group B and AB</u>	<u>NA</u>	<u>NA</u>	<u>187</u>	<u>100% (98.41%)</u>
<u>Anti-B</u>	<u>All samples</u>	<u>683</u>	<u>100% (99.56%)</u>	<u>302</u>	<u>100% (99.01%)</u>

NA = Not Applicable

The above results do not reflect any discrepancy resolution between the methods.

Performance characteristics for manual testing

Testing to determine the performance characteristics of the Bio-Rad IH Blood Grouping Reagents Anti-A, Anti-B and Anti-D (DVI-) was performed at five different US clinical sites and one internal site and included patient, cord blood and donor samples. The positive and negative percent agreements were calculated for the Bio-Rad IH Blood Grouping Reagents in comparison to the FDA-licensed reference reagents. Microtube results for a given reagent were combined across applicable IH-Cards.

Results of the positive percent agreement and negative percent agreement, with the one-sided Exact 95% Lower Confidence Limit (LCL), are listed in the data table below:

Results from Clinical Trials

Test	Negative Agreement N	Negative Agreement (one-sided Exact 95% LCL)	Positive Agreement N	Positive Agreement (one-sided Exact 95% LCL)
Anti-A	1,506	100% (99.80%)	1,060	100% (99.72%)
Anti-B	1,999	99.95% (99.76%)	567	100% (99.47%)

Agreement between the methods does not imply which method obtained the correct result. The above results do not reflect any discrepancy resolution between the methods.

Reproducibility was evaluated at three external sites by testing a reproducibility panel according to the following scheme: one lot of reagent x 3 sites x 2 operators x 5 non-consecutive days x 2 runs x 2 replicates over a period of 20 days. Reproducibility for the Blood Grouping Reagents Anti-A and Anti-B was demonstrated using the IH-Centrifuge L within runs, between runs and between sites.

Performance characteristics using the IH-Reader 24

Testing to determine the performance characteristics of the Bio-Rad IH Blood Grouping Reagents Anti-A and Anti-B was performed at five different US clinical sites and one internal site and included patient and donor samples. The positive and negative percent agreements were calculated for the Bio-Rad IH Blood Grouping Reagents in comparison to the FDA licensed reference reagents. Microtube results for a given reagent were combined across applicable IH-Cards.

Results of the positive percent agreement and negative percent agreement, with the one-sided Exact 95% Lower Confidence Limit (LCL) are listed in the data table below. Note: See the IH-Reader 24 User Manual and IH-COM User Manual U.S. for more information on verification of results.

Results from Clinical Trials

Test	Negative Agreement N	Negative Agreement (one-sided Exact 95% LCL)	Positive Agreement N	Positive Agreement (one-sided Exact 95% LCL)
Anti-A	1,503	99.93% (99.68%)	1,063	99.91% (99.55%)
Anti-B	2,003	99.80% (99.54%)	563	100% (99.47%)

Agreement between the methods does not imply which method obtained the correct result. The above results do not reflect any discrepancy resolution between the methods.

Reproducibility was evaluated at three external sites by testing a reproducibility panel according to the following scheme: one lot of reagent x 3 sites x 2 operators x 5 non-consecutive days x 2 runs x 2 replicates over a period of 20 days. Reproducibility for the Blood Grouping Reagents Anti-A and Anti-B using the IH-Reader 24 was demonstrated within runs, between run and between sites.

For technical support or further product information, contact Bio-Rad Laboratories, Inc. at 800-224-6723.

GLOSSARY OF SYMBOLS

Symbol	Definition	Symbol	Definition
[LOT]	Batch Code	[IVD]	<i>In vitro</i> diagnostic medical device
!	Consult the instructions for use for important cautionary information such as warnings and precautions	!	Consult instructions for use
M	Manufacturer	e	Use by YYYY-MM-DD
S	Contains sufficient quantity for <n> tests	[REF]	Catalog number
t	Temperature limitation	[VOL]	Volume

BIBLIOGRAPHY

1. Kankura T., Kurashina S., Nakao M.: A gel filtration technique for separation of erythrocytes from human blood. J Lab Clin Med 1974; 83:840-844.
2. Rouger Ph., Salmon Ch.: La pratique de l'agglutination des érythrocytes et du test de Coombs. Masson 1981.
3. Lapiere Y., Rigal D., Adam J. et al: The gel test: a new way to detect red cell antigen-antibody reactions. Transfusion 1990; 30:109-113.
4. Salmon Ch., Cartron J.P., Rouger Ph.: Les groupes sanguins chez l'homme, 2e éd. Masson 1991.
5. Agre P.C., Cartron J.P.: Protein blood group antigens of the human red cell. Structure, function and clinical significance. The John Hopkins University Press 1992.
6. Third international workshop and symposium on monoclonal antibodies and related antigens. Section Rh TCB 1996; 6:331-404.
7. Reid M.E., Lomas-Francis C.: The Blood Group Antigen Facts Book. Academic Press 1997.
8. Third international workshop and symposium on monoclonal antibodies and related antigens. Section ABO. TCB 1997; 1:13-54.
9. Issitt P.D.: Applied Blood Group Serology. 4th ed. Miami: Montgomery Scientific Publications, 1998.
10. John D. Roback, MD et al. Technical Manual 17th Edition, Bethesda, MA: AABB, 2011.

Key: Underline = Addition of changes ◀ = Deletion of text