

Partnership for Food Protection's  
Surveillance, Response and Post Response Workgroup presents

# Quick Start Food Emergency Response Job Aids

(To facilitate Initial Planning in an Integrated Food Emergency Response Event)



January 2017





## Table of Contents

Executive Summary.....	3
Purpose Statement .....	3
Scope.....	3
Benefits .....	3
Commonly Used Acronyms in Emergency Response.....	4
Acknowledgements.....	5
Job Aids .....	6
A. Initial Planning in an Integrated Food Emergency Response – General.....	6
B. Initial Planning in an Integrated Food Emergency Response – Epidemiology.....	7
C. Initial Planning in an Integrated Food Emergency Response – Environmental/Investigation.....	8



## Executive Summary

The Quick Start Job Aids are protocols designed primarily for food emergency response coordinators and response team members including epidemiologists, laboratory and food regulatory program officials in federal, state, local, and territorial agencies (partners agencies) who have coordinated public and environmental health authority for food emergency response. Additionally, users may also include law enforcement officials in the event of intentional contamination. The job aids can also be shared with industry, food protection task forces and other stakeholders to increase awareness about the role of government in response, and to assist them in preparing their own complimentary response protocols.

## Purpose Statement

The purpose of the Quick Start Job Aids is to facilitate communication, coordination and planning amongst programs and agencies early on in an investigation when an adverse food event such as an outbreak or food contamination is initially suspected or detected.

## Scope

The three Quick Start Job Aids provided in this guide are flow diagrams that highlight key tasks to take into consideration when gathering information and planning in the initial stages of the investigation.

- A. Initial Planning in an Integrated Food Emergency Response – General
- B. Initial Planning in an Integrated Food Emergency Response – Epidemiology
- C. Initial Planning in an Integrated Food Emergency Response – Environmental/Investigation

The tasks in the job aids attached are based on response best practices and principles identified by the Council to Improve Foodborne Illness Outbreak Response ([CIFOR](#)), the FDA-sponsored Rapid Response Team Program ([RRT](#)), the International Association of Food Protection ([IAFP](#)), the Department of Homeland Security (DHS) National Incident Management System ([NIMS](#)), and the National Association for State Departments of Agriculture's ([NASDA](#)) Food Emergency Response Plan Template. It is suggested to include these guides in your work planning manuals and discussions.

## Benefits

The Quick Start Job Aids are meant to promote inter and intra-agency communication and collaboration, using simple visuals to remind and reinforce tasks that should be considered in initial stage of response activities in order to enhance rapid exchange of information.



## Commonly Used Acronyms in Emergency Response

AAR – After Action Review or Report  
CD – Communicable Disease  
CDC – Centers for Disease Control and Prevention  
CIFOR – Council to Improve Foodborne Outbreak Response  
CORE (Network) – Coordinated Outbreak Response and Evaluation Network (FDA)  
DHS – Department of Homeland Security  
EH – Environmental Health  
EHS-Net – Environmental Health Specialists Network  
EOP – Emergency Operations Plan  
EPA – Environmental Protection Agency  
FDA – Food and Drug Administration  
FEMA – Federal Emergency Management Agency  
FERP – Food Emergency Response Plan  
FoodCORE - Foodborne Disease Centers for Outbreak Response Enhancement (CDC)  
FPTF – Food Protection Task Force  
FSIS – Food Safety Inspection Service (USDA)  
FRMAC – Federal Radiological Monitoring and Assessment Center  
HAN – Health Alert Network  
HHS – U.S. Department of Health and Human Services  
IAP – Incident Action Plan  
ICS – Incident Command System  
LHD – Local Health Department  
MFRPS – Manufactured Food Regulatory Program Standards  
MOA – Memorandum of Agreement  
MOU – Memorandum of Understanding  
NIMS – National Incident Management Plan  
NRF – National Response Framework  
NVEAIS – National Voluntary Environmental Assessment Information System  
OP – FDA Office of Partnerships (formerly Division of Federal State Relations – DFSR)  
PFGE – Pulsed-Field Gel Electrophoresis  
POS – Point of Service  
PPE – Personal Protection Equipment  
QMS – Quality Management System  
RFR – Reportable Food Registry  
RRT – Rapid Response Team  
SOP – Standard Operating Procedure  
USDA – US Department of Agriculture  
WVWA – Working With Other Agencies (RRT Manual Chapter)

\* A full glossary of terms is available in the Rapid Response Team Best Practices Manual



## Acknowledgements

*A special thanks to the following PFP Surveillance, Response and Post Response Workgroup members who contributed to the development of this resource.*

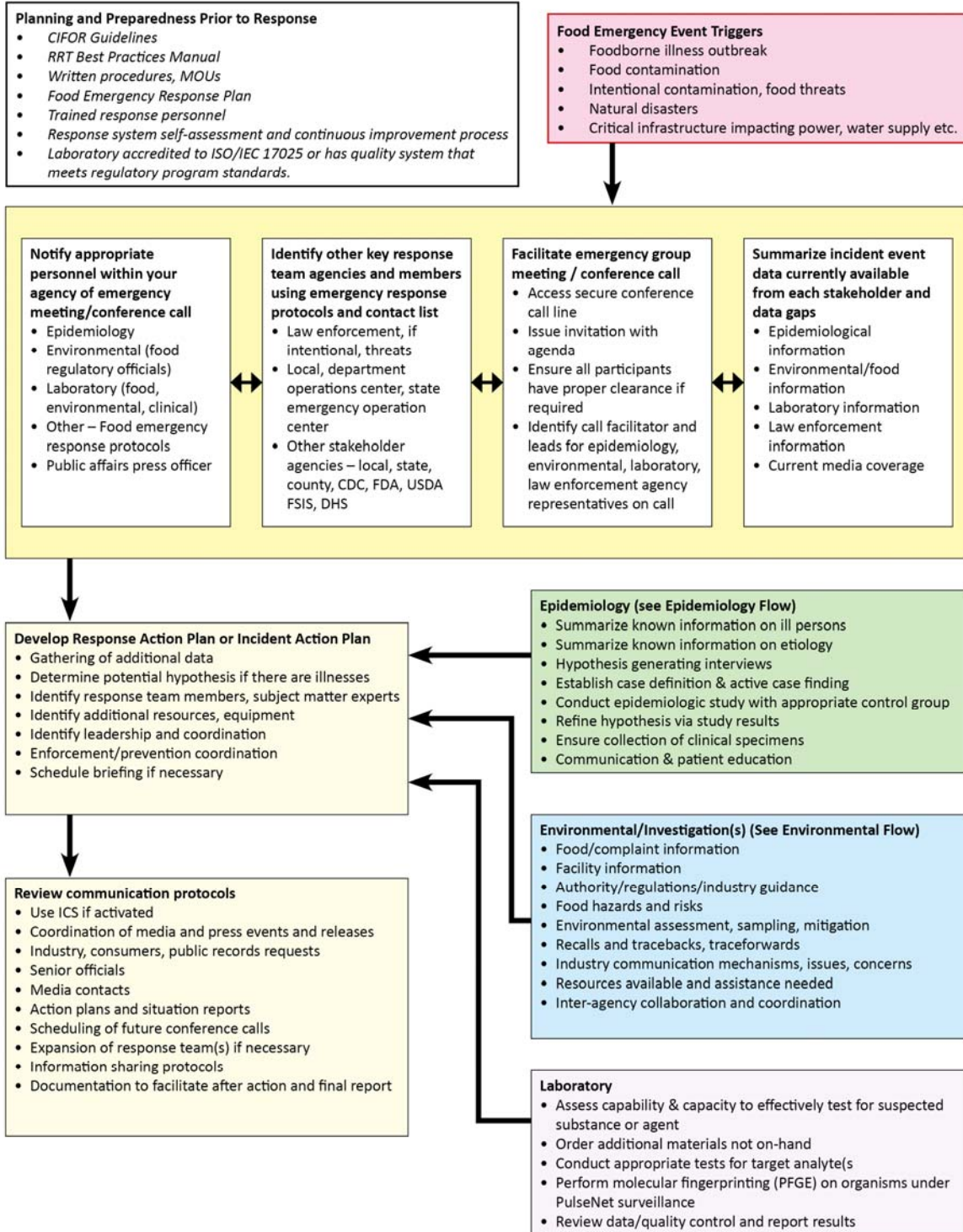
*Susan Palchik, MN Hennepin County  
Brian Saunders, NY Dept. of Agriculture and Markets  
John Sanders, Dept. of Homeland Security  
Julie Schlegel, SC Dept. of Health and Environmental Control  
Thomas Beacorn, USDA FSIS  
Roberta Hammond, FDA CORE  
Ben Miller, MN Dept. of Health  
Pamela LeBlanc, FDA CORE  
Priscilla Neves, FDA Office of Partnerships*

*Travis Goodman, FDA Office of Partnerships  
Wanda Lenger, FDA Division of Enforcement  
Lauren Yeung, FDA Office of Partnerships  
Mark Sestak, AL Dept. of Public Health  
Brad Honold, MN Dept. of Agriculture  
Mike Needham, CA Dept. of Public Health  
Alan Tart, FDA Office of Partnerships  
John Tilden, MI Dept. of Agriculture  
Lisa Hainstock, MI Dept. of Agriculture*



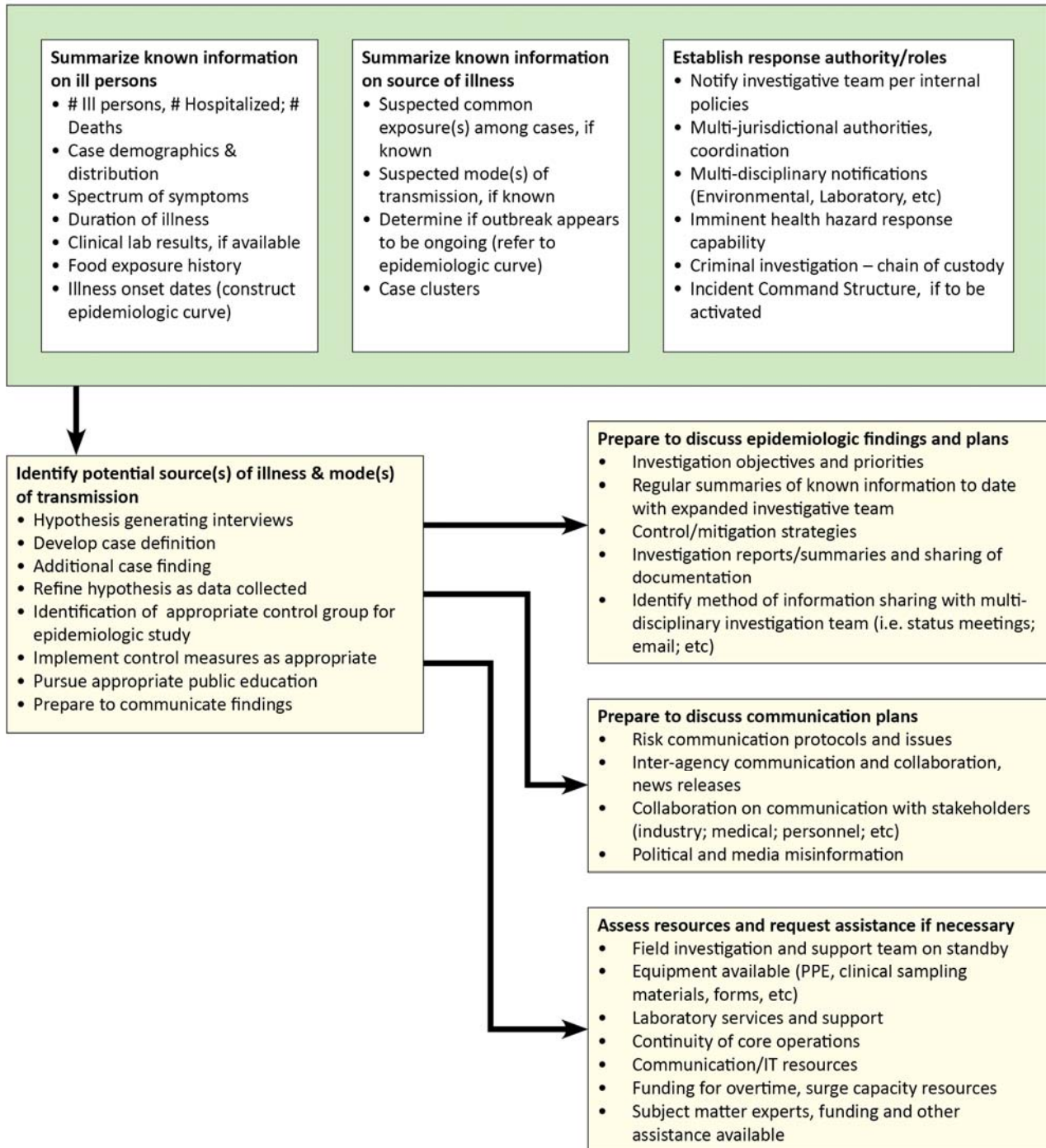
## Job Aids

### A. Initial Planning in an Integrated Food Emergency Response – General





## B. Initial Planning in an Integrated Food Emergency Response – Epidemiology





### C. Initial Planning in an Integrated Food Emergency Response – Environmental/Investigation

