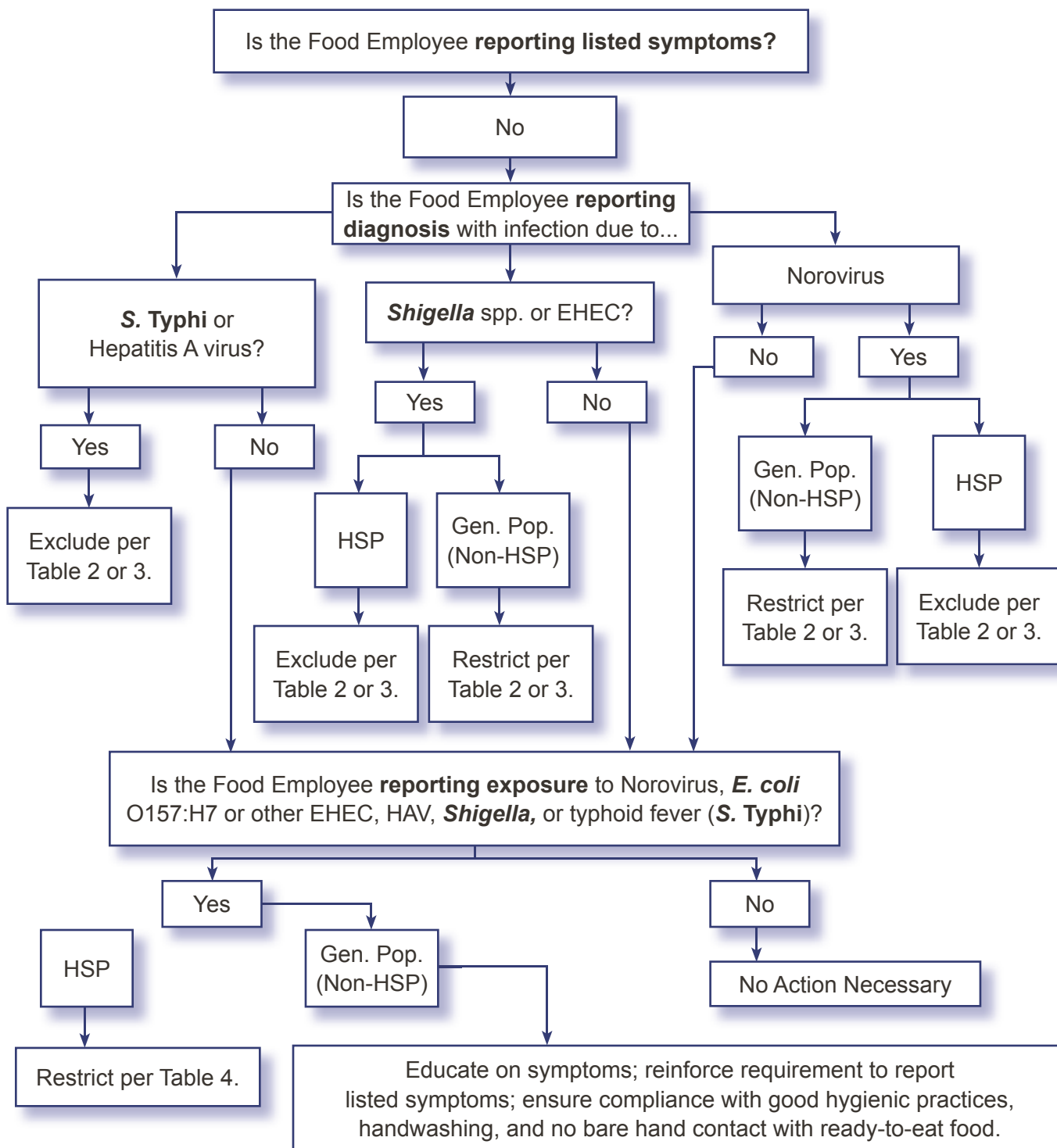


2-201.11 / 2-201.12 Decision Tree 2. When to Exclude or Restrict a Food Employee Who is Asymptomatic and Reports a Listed Diagnosis and When to Restrict a Food Employee Who Reports a Listed Exposure Under the Food Code



Key: (HSP) Highly Susceptible Population and (Gen. Pop.) General Population