



How Can CLSI Help?

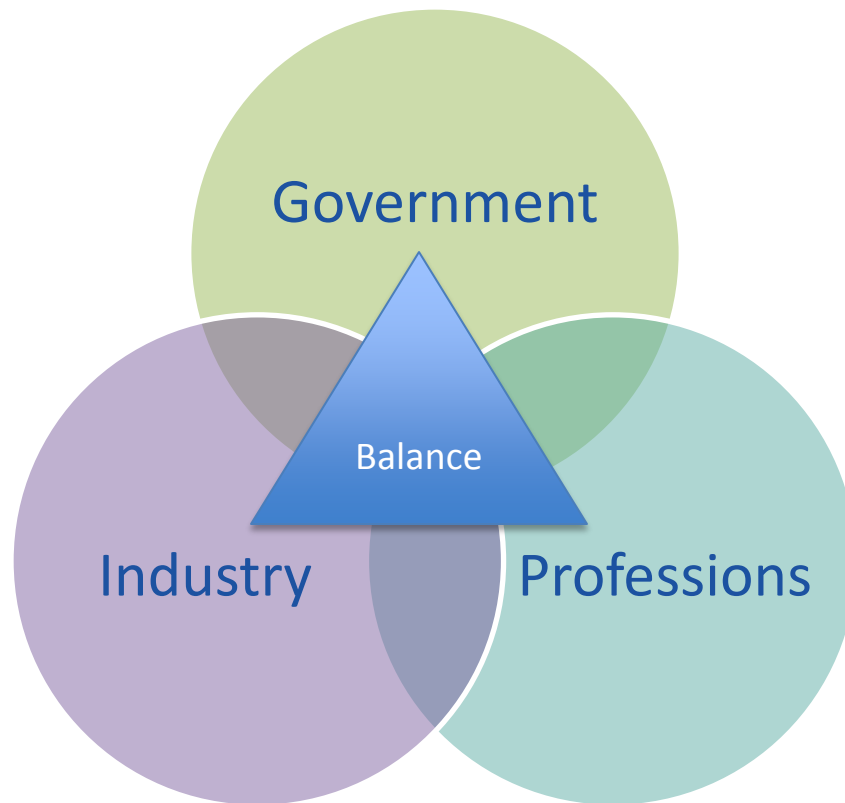
Jean B. Patel, PhD, D(ABMM)

Division of Healthcare Quality Promotion
National Center for Emerging and Zoonotic Infectious Diseases

The findings and conclusions in this presentation have not been formally disseminated by the Centers for Disease Control and Prevention and should not be construed to represent any agency determination or policy

SAFER • HEALTHIER • PEOPLE™

CLSI Consensus Process



- ▶ Meetings are open to everyone.
- ▶ Meeting materials are publically available.
- ▶ Interests are balanced.
- ▶ Conflicts of interest are fully disclosed.



CLSI

Antimicrobial Susceptibility Testing Subcommittee

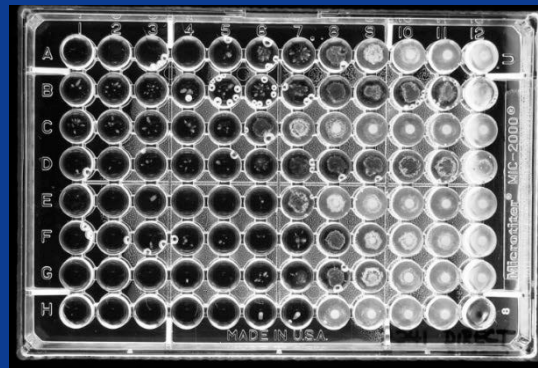


- Face-to-face meetings twice a year in January & June
- Meetings are open – average 200 people
- Working groups meet all year



What Does CLSI Do?

- Standards for Reference Methods



Frozen Broth Microdilution



Disk Diffusion



What Does CLSI Do? – M23

- *Development of In Vitro Susceptibility Testing Criteria and Quality Control Parameters*

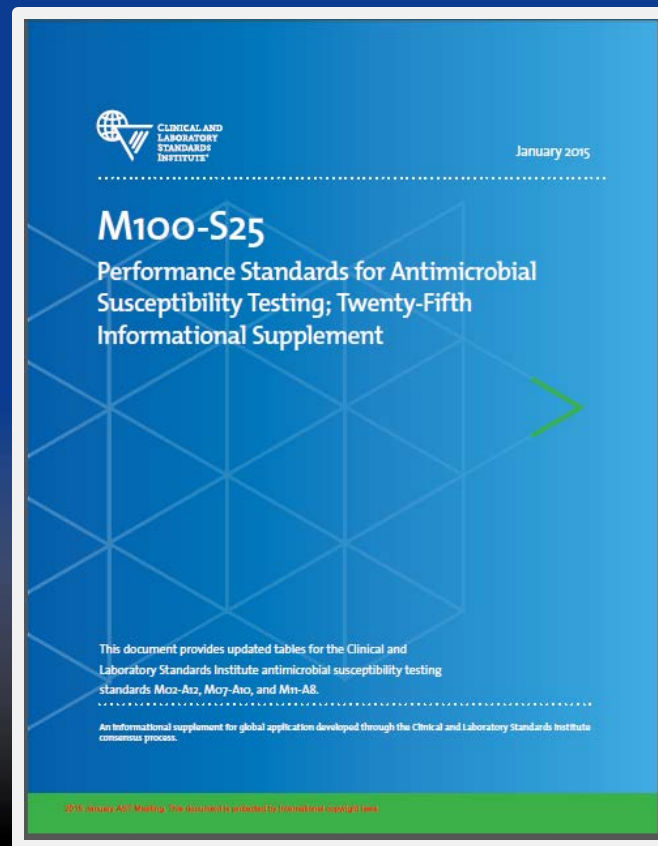
- Data for establishing a MIC breakpoint
- Data for establishing a DD breakpoint
- Data for establishing QC ranges





What Does CLSI Do?

- Standards and Guidance for Interpretation of Antimicrobial Susceptibility Testing





Who Attends the Subcommittee Meeting?

- Representatives from healthcare
- Representatives from industry
 - Pharmaceuticals
 - Device manufacturers (STMA)
- Representatives from government agencies
 - CDC and FDA



CLSI Can Help By....

- Convening
 - Pharma & AST Device Manufacturers & FDA
- Tracking drugs in the pipeline





Thank You

Jean B. Patel
jpatel1@cdc.gov