

**INITIAL REMS APPROVAL: JULY 11, 2011**

**NDA 20-931 TIKOSYN (DOFETILIDE)**

Antiarrhythmic

Pfizer, Inc.

235 East 42<sup>nd</sup> Street

New York, NY 10017

**RISK EVALUATION AND MITIGATION STRATEGY (REMS) DOCUMENT**

**I. GOALS**

To mitigate the risk of Tikosyn induced arrhythmia by:

- Ensuring that Tikosyn is prescribed only by certified prescribers, dispensed only by certified dispensers, and dispensed for use only with documentation of safe use conditions;
- Educating health care providers about the risks and the need to initiate and re-initiate therapy in a health care facility that can provide calculations of creatinine clearance, continuous electrocardiographic monitoring, and cardiac resuscitation;
- Informing patients about the serious risks associated with Tikosyn therapy.

**II. REMS ELEMENTS**

**A. Medication Guide**

A Medication Guide will be dispensed with each Tikosyn prescription in accordance with 21 CFR 208.24 and by Healthcare Providers (HCPs) as described below.

**B. Elements to Assure Safe Use**

**1. Healthcare providers who prescribe Tikosyn will be specially certified**

- a. Pfizer will ensure that healthcare providers who prescribe Tikosyn (Prescribers) are specially certified. To become certified, each prescriber will enroll in the Tikosyn Program by submitting to Pfizer a completed Prescriber Certification Form, and agreeing to the following:

090177e184cb75fc\Approved\Approved On: 04-Dec-2013 22:20

090177e1822965c9\Approved\Approved On: 08-Aug-2011 14:40

- i. I understand that patients initiated or re-initiated on Tikosyn should be admitted for a minimum of 3 days to a healthcare facility that can provide calculations of creatinine clearance, continuous electrocardiographic monitoring, and cardiac resuscitation;
  - ii. I understand that following the treatment initiation and dosing guidelines in the Tikosyn label will decrease the risk of Tikosyn induced arrhythmia;
  - iii. I will inform my patients that Tikosyn is associated with the risk of induced arrhythmias;
  - iv. I will inform my patients that their blood lab measures and ECG should be re-evaluated every 3 months;
  - v. I will provide the Tikosyn Medication Guide to each patient at the initiation and re-initiation of Tikosyn therapy. I will review the contents of the Medication Guide with each patient.
- b. Pfizer will require a one-time re-certification of all currently certified prescribers within 6 months after REMS approval.
- c. Within 30 days of the initial approval of the Tikosyn REMS, Pfizer will send Dear Healthcare Provider Letters to all currently certified prescribers to notify them of the need to re-certify. The re-certification letter will reinforce the safety messages, safe use conditions, and REMS program elements. The letter will include a copy of the Tikosyn Full Prescribing Information, Medication Guide, Tikosyn Treatment Guidelines and Certification form, and will be available on the Tikosyn REMS program website for 6 months from the date of issuance of the letter.
- d. Pfizer will assess the need for additional, future re-certification of prescribers based on the results of assessments and monitoring.
- e. The Prescriber Certification Forms will be archived in the Pfizer National Tikosyn Database and a confirmation letter will be sent by Pfizer to the certified prescribers.
- f. The following prescriber materials are part of the REMS and are appended:
  1. Dear Healthcare Provider Letter for re-certification
  2. Dear Healthcare Provider Letter for new enrollees
  3. Tikosyn Program Treatment Guidelines
  4. Prescriber Certification Form
  5. Tikosyn REMS Website

## **2. Tikosyn will only be dispensed by pharmacies and health care settings that are specially certified**

- a. Pfizer will ensure that Tikosyn will be dispensed only by pharmacies and health care settings that are specially certified. To be certified to dispense Tikosyn, each pharmacy and healthcare setting will be enrolled in the Tikosyn program.

The enrollment process is comprised of the following steps that must be completed:

- i. Each health care setting where Tikosyn is dispensed for use will designate a representative. The designated representative will enroll in the Tikosyn Program by submitting to Pfizer a completed Institution Certification Form, and agreeing to the following:
1. I attest that the healthcare facility where Tikosyn is initiated or re-initiated can provide calculations of creatinine clearance, continuous electrocardiographic monitoring, and cardiac resuscitation;
  2. I will ensure that all appropriate staff (including physicians, pharmacists, and telemetry nurses) are trained regarding the Tikosyn REMS program and will comply with all of the program requirements;
  3. I will establish or oversee the establishment of a system, order sets, protocols, or other measures to ensure appropriate dosing and monitoring;
  4. I will ensure that the pharmacy staff verifies that the prescribing healthcare provider is enrolled in the Tikosyn program prior to dispensing Tikosyn for inpatient use;
  5. I understand that, prior to patient discharge, the health care facility must either: provide a free 7-day (14-count) supply of Tikosyn and the Medication Guide to patients, or ensure the patient's take-home prescription is filled.
- ii. Each pharmacy where Tikosyn is dispensed will designate a representative. The designated representative will enroll in the Tikosyn Program by submitting to Pfizer a completed Tikosyn In Pharmacy Systems (T.I.P.S) Program Certification Form, agreeing to the following:
1. I will ensure that all appropriate staff are trained and have read and understand the T.I.P.S. program materials.
  2. I will ensure that pharmacy staff will verify that the prescriber is certified in the Tikosyn program prior to dispensing each prescription, by accessing the system.
  3. I will ensure pharmacy staff stamp each prescription with the provided T.I.P.S. Stamp and initial and date the Tikosyn stamped prescription in the appropriate areas, verifying prescriber certification status.

090177e184cb75fc\Approved\Approved On: 04-Dec-2013 22:20

090177e1822965c9\Approved\Approved On: 08-Aug-2011 14:40

4. I will ensure that the Medication Guide is provided by the pharmacy staff to the patient with each prescription.
  5. I will ensure a copy of the above attestations is posted or otherwise made available to pharmacy staff to ensure that the pharmacy staff understands these special conditions for use of Tikosyn.
- b. A Tikosyn Stamp will be provided to certified Retail/Mail-order Pharmacies in the T.I.P.S materials sent to pharmacies after certification so that they will be able to stamp the prescription.
  - c. Pfizer will require a one time re-certification of all currently certified health care facilities and pharmacies within 6 months after REMS approval.
  - d. Within 30 days of the initial approval of the Tikosyn REMS, Pfizer will send Dear Pharmacist letters to all currently certified health care settings and pharmacies to notify them of the need to re-certify. The re-certification letter will reinforce the safety messages, safe use conditions, and REMS program elements. The letter will include a copy of the Tikosyn Full Prescribing Information, Medication Guide, Tikosyn Treatment Guidelines and Certification form, and will be available on the Tikosyn REMS program website for 6 months from the date of issuance of the letter.
  - e. Pfizer will de-certify Tikosyn Program participant(s) for non-compliance, if warranted by assessments to evaluate compliance to Tikosyn Program requirements.
  - f. The following materials are part of the REMS and are appended:
    1. Dear Pharmacist Letter for re-certification (Institution and Retail/Mail-order Pharmacies, as applicable)
    2. Dear Pharmacist Letter for new enrollees (Institution and Retail/Mail-order Pharmacies, as applicable)
    3. Tikosyn Program Treatment Guidelines
    4. Pharmacy Certification Form (Institution and Retail/Mail-order Pharmacies, as applicable)
    5. T.I.P.S. Program Kit
    6. Tikosyn REMS Website

### **C. Implementation System**

The Implementation System will include the following:

1. Pfizer will distribute Tikosyn only to certified prescribers, pharmacies, and health care settings.

090177e184cb75fc\Approved\Approved On: 04-Dec-2013 22:20

090177e1822965c9\Approved\Approved On: 08-Aug-2011 14:40

2. Pfizer will maintain the Pfizer National Tikosyn Database, which includes the record of all enrolled and certified health care settings and pharmacies that dispense and prescribers who prescribe Tikosyn.
3. Pfizer will review distribution data to assess compliance with the requirements that Tikosyn only be dispensed by certified dispensers.
4. Pfizer will monitor compliance with the Tikosyn program to help ensure prescriptions are written by certified prescribers and that certified dispensers dispense Tikosyn in accordance with the program requirements, by conducting surveys of institutions and prescribers.
5. Based on the monitoring and evaluation of the implementation of the elements to assure safe use provided for under section B2, Pfizer will take reasonable steps to improve implementation of these elements and adherence to the REMS requirements to meet the goal of the REMS.

#### **D. Timetable for Submission of Assessments**

Pfizer will submit REMS Assessments to the FDA at 6 months and 1 year from the date of the approval of the REMS, and annually thereafter. To facilitate inclusion of as much information as possible while allowing reasonable time to prepare the submission, the reporting interval covered by each assessment should conclude no earlier than 60 days before the submission date for that assessment. Pfizer will submit each assessment so that it will be received by the FDA on or before the due date.

090177e184cb75fc\Approved\Approved On: 04-Dec-2013 22:20

090177e1822965c9\Approved\Approved On: 08-Aug-2011 14:40

**TIKOSYN<sup>®</sup>**

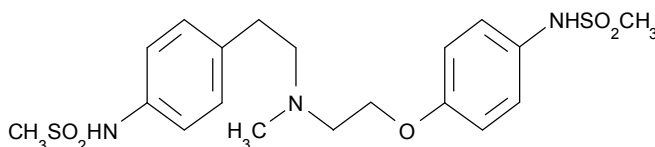
**(dofetilide)**

**Capsules**

To minimize the risk of induced arrhythmia, patients initiated or re-initiated on TIKOSYN should be placed for a minimum of 3 days in a facility that can provide calculations of creatinine clearance, continuous electrocardiographic monitoring, and cardiac resuscitation. For detailed instructions regarding dose selection, see **DOSAGE AND ADMINISTRATION**. TIKOSYN is available only to hospitals and prescribers who have received appropriate TIKOSYN dosing and treatment initiation education; see **DOSAGE AND ADMINISTRATION**.

## DESCRIPTION

TIKOSYN<sup>®</sup> (dofetilide) is an antiarrhythmic drug with Class III (cardiac action potential duration prolonging) properties. Its empirical formula is C<sub>19</sub>H<sub>27</sub>N<sub>3</sub>O<sub>5</sub>S<sub>2</sub> and it has a molecular weight of 441.6. The structural formula is



The chemical name for dofetilide is:

*N*-[4-[2-[methyl[2-[4-[(methylsulfonyl)amino]phenoxy]ethyl]amino]ethyl]phenyl]-methanesulfonamide.

Dofetilide is a white to off-white powder. It is very slightly soluble in water and propan-2-ol and is soluble in 0.1M aqueous sodium hydroxide, acetone, and aqueous 0.1M hydrochloric acid.

TIKOSYN capsules contain the following inactive ingredients: microcrystalline cellulose, corn starch, colloidal silicon dioxide and magnesium stearate. TIKOSYN is supplied for oral administration in three dosage strengths: 125 mcg (0.125 mg) orange and white capsules, 250 mcg (0.25 mg) peach capsules, and 500 mcg (0.5 mg) peach and white capsules.

## CLINICAL PHARMACOLOGY

### Mechanism of Action

TIKOSYN (dofetilide) shows Vaughan Williams Class III antiarrhythmic activity. The mechanism of action is blockade of the cardiac ion channel carrying the rapid component of the delayed rectifier potassium current, I<sub>Kr</sub>. At concentrations covering several orders of magnitude, dofetilide blocks only I<sub>Kr</sub> with no relevant block of the other repolarizing potassium currents (e.g., I<sub>Ks</sub>, I<sub>K1</sub>). At clinically relevant concentrations, dofetilide has no effect on sodium channels (associated with Class I effect), adrenergic alpha-receptors, or adrenergic beta-receptors.

## Electrophysiology

TIKOSYN (dofetilide) increases the monophasic action potential duration in a predictable, concentration-dependent manner, primarily due to delayed repolarization. This effect, and the related increase in effective refractory period, is observed in the atria and ventricles in both resting and paced electrophysiology studies. The increase in QT interval observed on the surface ECG is a result of prolongation of both effective and functional refractory periods in the His-Purkinje system and the ventricles.

Dofetilide did not influence cardiac conduction velocity and sinus node function in a variety of studies in patients with or without structural heart disease. This is consistent with a lack of effect of dofetilide on the PR interval and QRS width in patients with pre-existing heart block and/or sick sinus syndrome.

In patients, dofetilide terminates induced re-entrant tachyarrhythmias (e.g., atrial fibrillation/flutter and ventricular tachycardia) and prevents their re-induction. TIKOSYN does not increase the electrical energy required to convert electrically induced ventricular fibrillation, and it significantly reduces the defibrillation threshold in patients with ventricular tachycardia and ventricular fibrillation undergoing implantation of a cardioverter-defibrillator device.

## Hemodynamic Effects

In hemodynamic studies, TIKOSYN had no effect on cardiac output, cardiac index, stroke volume index, or systemic vascular resistance in patients with ventricular tachycardia, mild to moderate congestive heart failure or angina, and either normal or low left ventricular ejection fraction. There was no evidence of a negative inotropic effect related to TIKOSYN therapy in patients with atrial fibrillation. There was no increase in heart failure in patients with significant left ventricular dysfunction (see **CLINICAL STUDIES, Safety in Patients with Structural Heart Disease, DIAMOND Studies**). In the overall clinical program, TIKOSYN did not affect blood pressure. Heart rate was decreased by 4–6 bpm in studies in patients.

## Pharmacokinetics, General

**Absorption and Distribution:** The oral bioavailability of dofetilide is >90%, with maximal plasma concentrations occurring at about 2–3 hours in the fasted state. Oral bioavailability is unaffected by food or antacid. The terminal half-life of TIKOSYN is approximately 10 hours; steady state plasma concentrations are attained within 2–3 days, with an accumulation index of 1.5 to 2.0. Plasma concentrations are dose proportional. Plasma protein binding of dofetilide is 60–70%, is independent of plasma concentration, and is unaffected by renal impairment. Volume of distribution is 3 L/kg.

**Metabolism and Excretion:** Approximately 80% of a single dose of dofetilide is excreted in urine, of which approximately 80% is excreted as unchanged dofetilide with the remaining 20% consisting of inactive or minimally active metabolites. Renal elimination involves both glomerular filtration and active tubular secretion (via the cation transport system, a process that can be inhibited by cimetidine, trimethoprim, prochlorperazine, megestrol, ketoconazole and dolutegravir). *In vitro* studies with human liver microsomes show that dofetilide can be metabolized by CYP3A4, but it has a low affinity for this isoenzyme. Metabolites are formed by N-dealkylation and N-oxidation. There are no quantifiable metabolites circulating in plasma, but 5 metabolites have been identified in urine.

## Pharmacokinetics in Special Populations

**Renal Impairment:** In volunteers with varying degrees of renal impairment and patients with arrhythmias, the clearance of dofetilide decreases with decreasing creatinine clearance. As a result, and as seen in clinical studies, the half-life of dofetilide is longer in patients with lower creatinine clearances. **Because increase in QT interval and the risk of ventricular arrhythmias are directly related to plasma concentrations of dofetilide, dosage adjustment based on calculated creatinine clearance is critically important** (see **DOSAGE AND ADMINISTRATION**). Patients with severe renal impairment (creatinine clearance <20 mL/min) were not included in clinical or pharmacokinetic studies (see **CONTRAINDICATIONS**).

**Hepatic Impairment:** There was no clinically significant alteration in the pharmacokinetics of dofetilide in volunteers with mild to moderate hepatic impairment (Child-Pugh Class A and B) compared to age- and weight-matched healthy volunteers. Patients with severe hepatic impairment were not studied.

**Patients with Heart Disease:** Population pharmacokinetic analyses indicate that the plasma concentration of dofetilide in patients with supraventricular and ventricular arrhythmias, ischemic heart disease, or congestive heart failure are similar to those of healthy volunteers, after adjusting for renal function.

**Elderly:** After correction for renal function, clearance of dofetilide is not related to age.

**Women:** A population pharmacokinetic analysis showed that women have approximately 12–18% lower dofetilide oral clearances than men (14–22% greater plasma dofetilide levels), after correction for weight and creatinine clearance. In females, as in males, renal function was the single most important factor influencing dofetilide clearance. In normal female volunteers, hormone replacement therapy (a combination of conjugated estrogens and medroxyprogesterone) did not increase dofetilide exposure.

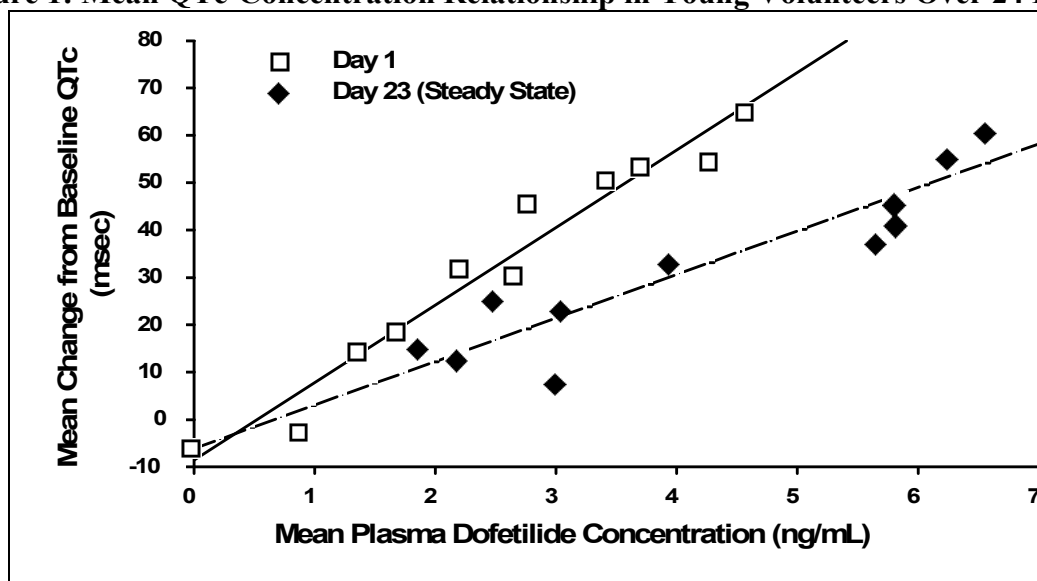
## Drug-Drug Interactions (see **PRECAUTIONS**)

### Dose-Response and Concentration Response for Increase in QT Interval

Increase in QT interval is directly related to dofetilide dose and plasma concentration. Figure 1 shows that the relationship in normal volunteers between dofetilide plasma concentrations and change in QTc is linear, with a positive slope of approximately 15–25 msec/(ng/mL) after the first dose and approximately 10–15 msec/(ng/mL) at Day 23 (reflecting a steady state of dosing). A linear relationship between mean QTc increase and dofetilide dose was also seen in patients with renal impairment, in patients with ischemic heart disease, and in patients with supraventricular and ventricular arrhythmias.



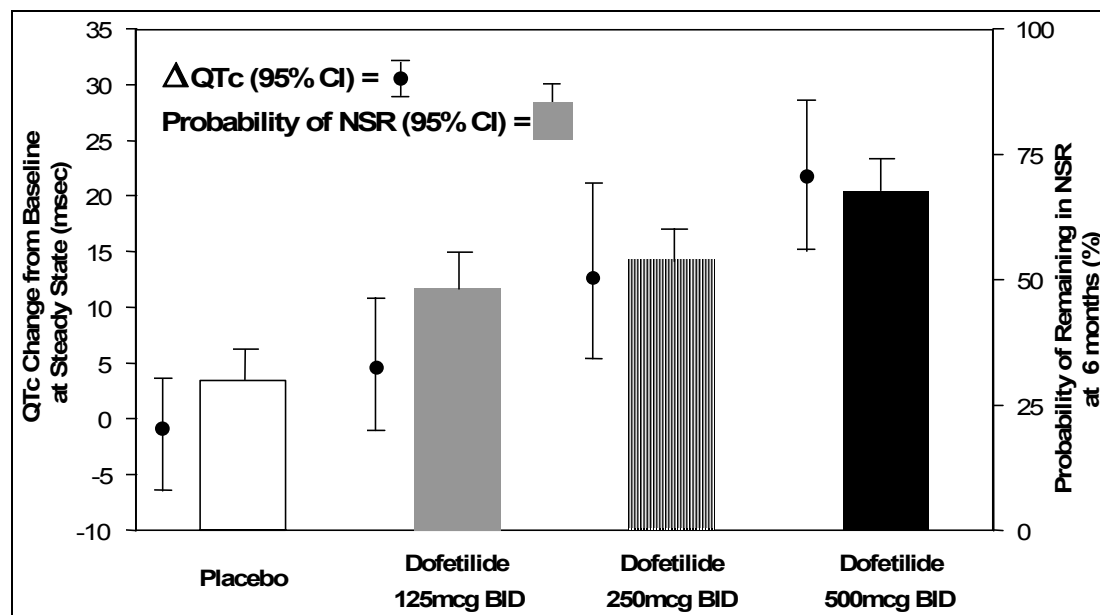
**Figure 1: Mean QTc-Concentration Relationship in Young Volunteers Over 24 Days**



Note: The range of dofetilide plasma concentrations achieved with the 500 mcg BID dose adjusted for creatinine clearance is 1–3.5 ng/mL.

The relationship between dose, efficacy, and the increase in QTc from baseline at steady state for the two randomized, placebo-controlled studies (described further below) is shown in Figure 2. The studies examined the effectiveness of TIKOSYN in conversion to sinus rhythm and maintenance of normal sinus rhythm after conversion in patients with atrial fibrillation/flutter of >1 week duration. As shown, both the probability of a patient's remaining in sinus rhythm at six months and the change in QTc from baseline at steady state of dosing increased in an approximately linear fashion with increasing dose of TIKOSYN. Note that in these studies, doses were modified by results of creatinine clearance measurement and in-hospital QTc prolongation.

**Figure 2: Relationship Between TIKOSYN Dose, QTc Increase and Maintenance of NSR**



Number of patients evaluated for maintenance of NSR: 503 TIKOSYN, 174 placebo.  
 Number of patients evaluated for QTc change: 478 TIKOSYN, 167 placebo.

## CLINICAL STUDIES

### Chronic Atrial Fibrillation and/or Atrial Flutter

Two randomized, parallel, double-blind, placebo-controlled, dose-response trials evaluated the ability of TIKOSYN 1) to convert patients with atrial fibrillation or atrial flutter (AF/AFL) of more than 1 week duration to normal sinus rhythm (NSR) and 2) to maintain NSR (delay time to recurrence of AF/AFL) after drug-induced or electrical cardioversion. A total of 996 patients with a one week to two year history of atrial fibrillation/atrial flutter were enrolled. Both studies randomized patients to placebo or to doses of TIKOSYN 125 mcg, 250 mcg, 500 mcg, or in one study a comparator drug, given twice a day (these doses were lowered based on calculated creatinine clearance and, in one of the studies, for QT interval or QTc). **All patients were started on therapy in a hospital where their ECG was monitored (see DOSAGE AND ADMINISTRATION).**

Patients were excluded from participation if they had had syncope within the past 6 months, AV block greater than first degree, MI or unstable angina within 1 month, cardiac surgery within 2 months, history of QT interval prolongation or polymorphic ventricular tachycardia associated with use of antiarrhythmic drugs, QT interval or QTc >440 msec, serum creatinine >2.5 mg/mL, significant diseases of other organ systems; used cimetidine; or used drugs known to prolong the QT interval.

Both studies enrolled mostly Caucasians (over 90%), males (over 70%), and patients  $\geq 65$  years of age (over 50%). Most (>90%) were NYHA Functional Class I or II. Approximately one-half had structural heart disease (including ischemic heart disease, cardiomyopathies, and valvular disease) and about one-half were hypertensive. A substantial proportion of patients were on concomitant therapy, including digoxin (over 60%), diuretics (over 20%), and ACE inhibitors (over 30%). About 90% were on anticoagulants.

Acute conversion rates are shown in Table 1 for randomized doses (doses were adjusted for calculated creatinine clearance and, in Study 1, for QT interval or QTc). Of patients who converted pharmacologically, approximately 70% converted within 24–36 hours.

**Table 1: Conversion of Atrial Fibrillation/Flutter to Normal Sinus Rhythm**

	TIKOSYN Dose			Placebo
	125 mcg BID	250 mcg BID	500 mcg BID	
Study 1	5/82(6%)	8/82(10%)	23/77(30%)	1/84(1%)
Study 2	8/135(6%)	14/133(11%)	38/129(29%)	2/137(1%)

Patients who did not convert to NSR with randomized therapy within 48–72 hours had electrical cardioversion. Those patients remaining in NSR after conversion in hospital were continued on randomized therapy as outpatients (maintenance period) for up to one year unless they experienced a recurrence of atrial fibrillation/atrial flutter or withdrew for other reasons.

Table 2 shows, by randomized dose, the percentage of patients at 6 and 12 months in both studies who remained on treatment in NSR and the percentage of patients who withdrew because of recurrence of AF/AfI or adverse events.

**Table 2: Patient Status at 6 and 12 Months Post Randomization**

	TIKOSYN Dose			Placebo
	125 mcg BID	250 mcg BID	500 mcg BID	
Study 1				
Randomized	82	82	77	84
Achieved NSR	60	61	61	68
6 months				
Still on treatment in NSR	38%	44%	52%	32%
D/C for recurrence	55%	49%	33%	63%
D/C for AEs	3%	3%	8%	4%
12 months				
Still on treatment in NSR	32%	26%	46%	22%
D/C for recurrence	58%	57%	36%	72%
D/C for AEs	7%	11%	8%	6%
Study 2				
Randomized	135	133	129	137
Achieved NSR	103	118	100	106
6 months				
Still on treatment in NSR	41%	49%	57%	22%
D/C for recurrence	48%	42%	27%	72%
D/C for AEs	9%	6%	10%	4%
12 months				
Still on treatment in NSR	25%	42%	49%	16%
D/C for recurrence	59%	47%	32%	76%
D/C for AEs	11%	6%	12%	5%

Note that columns do not add up to 100% due to discontinuations for “other” reasons.

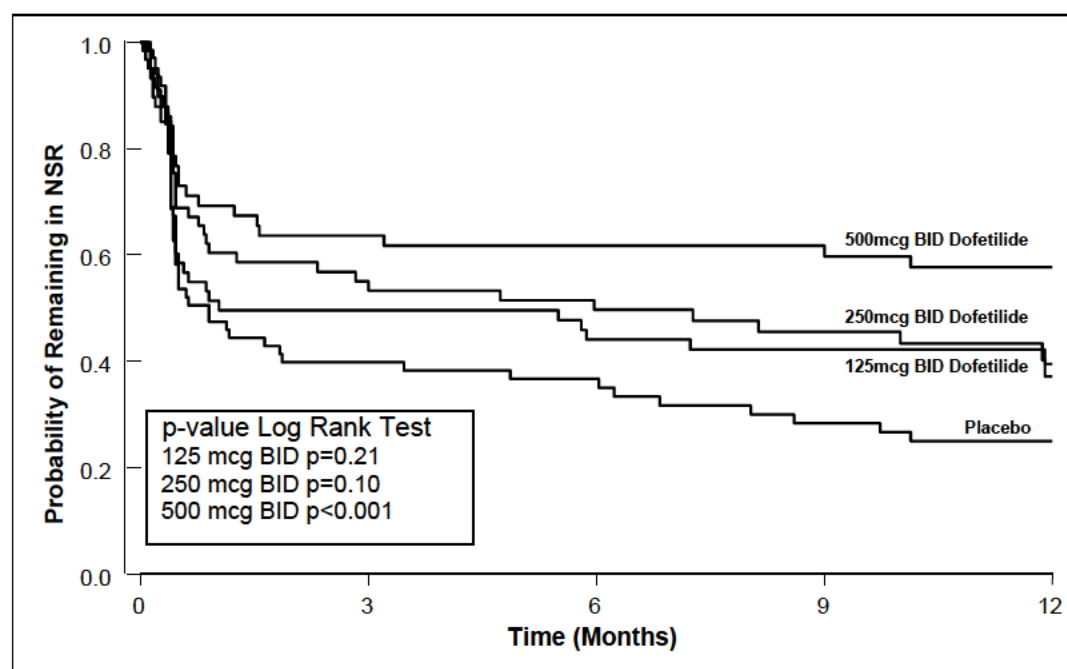
Table 3 and Figures 3 and 4 show, by randomized dose, the effectiveness of TIKOSYN in maintaining NSR using Kaplan Meier analysis, which shows patients remaining on treatment.

**Table 3: P-Values and Median Time (days) to Recurrence of AF/AfI**

	TIKOSYN Dose			Placebo
	125 mcg BID	250 mcg BID	500 mcg BID	
Study 1				
p-value vs. placebo	P=0.21	P=0.10	P<0.001	
Median time to recurrence (days)	31	179	>365	27
Study 2				
p-value vs. placebo	P=0.006	P<0.001	P<0.001	
Median time to recurrence (days)	182	>365	>365	34

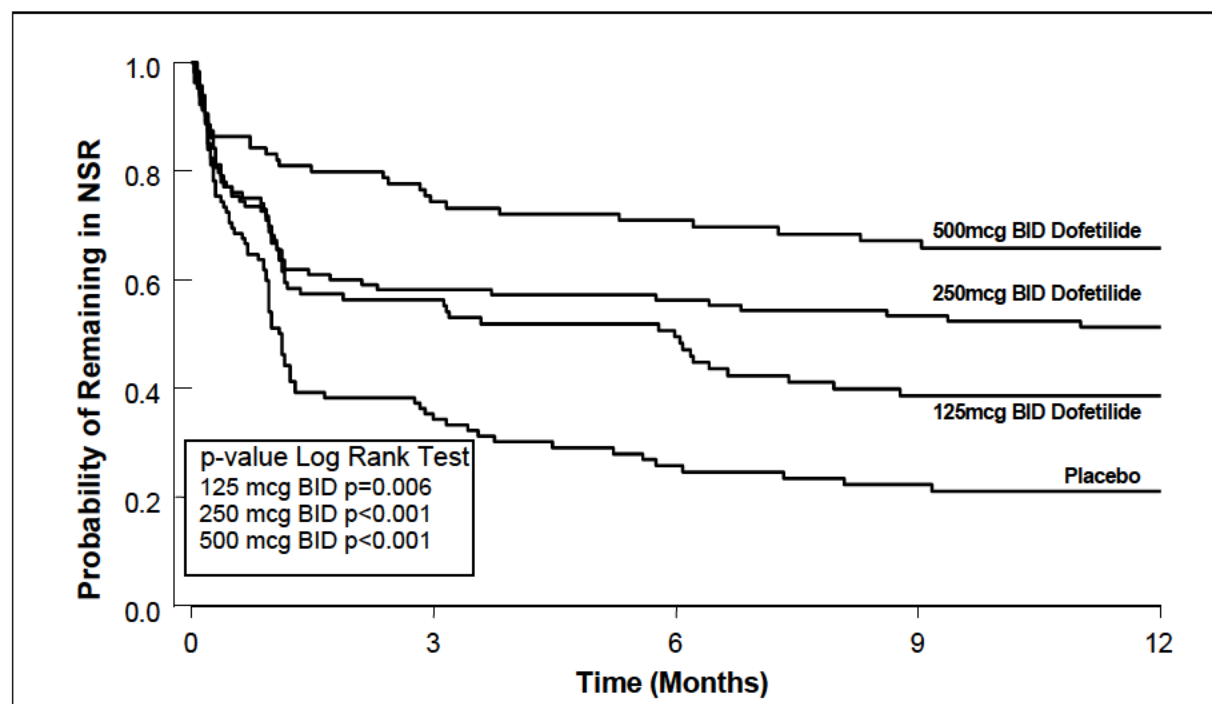
Median time to recurrence of AF/AfI could not be estimated accurately for the 250 mcg BID treatment group in Study 2 and the 500 mcg BID treatment groups in Studies 1 and 2 because TIKOSYN maintained >50% of patients (51%, 58%, and 66%, respectively) in NSR for the 12 months duration of the studies.

**Figure 3: Maintenance of Normal Sinus Rhythm, TIKOSYN Regimen vs. Placebo (Study 1)**



The point estimates of the probabilities of remaining in NSR at 6 and 12 months were 62% and 58%, respectively, for TIKOSYN 500 mcg BID; 50% and 37%, respectively, for TIKOSYN 250 mcg BID; and 37%, and 25%, respectively, for placebo.

**Figure 4: Maintenance of Normal Sinus Rhythm, TIKOSYN Regimen vs. Placebo (Study 2)**



The point estimates of the probabilities of remaining in NSR at 6 and 12 months were 71% and 66%, respectively, for TIKOSYN 500 mcg BID; 56% and 51%, respectively, for TIKOSYN 250 mcg BID; and 26% and 21%, respectively, for placebo.

In both studies, TIKOSYN resulted in a dose-related increase in the number of patients maintained in NSR at all time periods and delayed the time of recurrence of sustained AF. Data pooled from both studies show that there is a positive relationship between the probability of staying in NSR, TIKOSYN dose, and increase in QTc (see Figure 2 in **CLINICAL PHARMACOLOGY, Dose-Response and Concentration Response for Increase in QT Interval**).

Analysis of pooled data for patients randomized to a TIKOSYN dose of 500 mcg twice daily showed that maintenance of NSR was similar in both males and females, in both patients aged <65 years and patients ≥65 years of age, and in both patients with atrial flutter as a primary diagnosis and those with a primary diagnosis of atrial fibrillation.

During the period of in-hospital initiation of dosing, 23% of patients in Studies 1 and 2 had their dose adjusted downward on the basis of their calculated creatinine clearance, and 3% had their dose down-titrated due to increased QT interval or QTc. Increased QT interval or QTc led to discontinuation of therapy in 3% of patients.

#### **Safety in Patients with Structural Heart Disease: DIAMOND Studies (The Danish Investigations of Arrhythmia and Mortality on Dofetilide)**

The two DIAMOND studies were 3-year trials comparing the effects of TIKOSYN and placebo on mortality and morbidity in patients with impaired left ventricular function (ejection fraction ≤ 35%). Patients were treated for at least one year. One study was in patients with moderate to severe (60% NYHA Class III or IV) congestive heart failure (DIAMOND CHF) and the other was in patients with recent myocardial infarction (DIAMOND MI) (of whom 40% had NYHA

Class III or IV heart failure). Both groups were at relatively high risk of sudden death. The DIAMOND trials were intended to determine whether TIKOSYN could reduce that risk. The trials did not demonstrate a reduction in mortality; however, they provide reassurance that, when initiated carefully, in a hospital or equivalent setting, TIKOSYN did not increase mortality in patients with structural heart disease, an important finding because other antiarrhythmics [notably the Class IC antiarrhythmics studied in the Cardiac Arrhythmia Suppression Trial (CAST) and a pure Class III antiarrhythmic, d-sotalol (SWORD)] have increased mortality in post-infarction populations. The DIAMOND trials therefore provide evidence of a method of safe use of TIKOSYN in a population susceptible to ventricular arrhythmias. In addition, the subset of patients with AF in the DIAMOND trials provide further evidence of safety in a population of patients with structural heart disease accompanying the AF. Note, however, that this AF population was given a lower (250 mcg BID) dose (see **CLINICAL STUDIES, DIAMOND Patients with Atrial Fibrillation**).

In both DIAMOND studies, patients were randomized to 500 mcg BID of TIKOSYN, but this was reduced to 250 mcg BID if calculated creatinine clearance was 40–60 mL/min, if patients had AF, or if QT interval prolongation (>550 msec or >20% increase from baseline) occurred after dosing. Dose reductions for reduced calculated creatinine clearance occurred in 47% and 45% of DIAMOND CHF and MI patients, respectively. Dose reductions for increased QT interval or QTc occurred in 5% and 7% of DIAMOND CHF and MI patients, respectively. Increased QT interval or QTc (>550 msec or >20% increase from baseline) resulted in discontinuation of 1.8% of patients in DIAMOND CHF and 2.5% of patients in DIAMOND MI.

**In the DIAMOND studies, all patients were hospitalized for at least 3 days after treatment was initiated and monitored by telemetry.** Patients with QTc greater than 460 msec, second or third degree AV block (unless with pacemaker), resting heart rate <50 bpm, or prior history of polymorphic ventricular tachycardia were excluded.

DIAMOND CHF studied 1518 patients hospitalized with severe CHF who had confirmed impaired left ventricular function (ejection fraction  $\leq 35\%$ ). Patients received a median duration of therapy of greater than one year. There were 311 deaths from all causes in patients randomized to TIKOSYN (n=762) and 317 deaths in patients randomized to placebo (n=756). The probability of survival at one year was 73% (95% CI: 70% – 76%) in the TIKOSYN group and 72% (95% CI: 69% – 75%) in the placebo group. Similar results were seen for cardiac deaths and arrhythmic deaths. Torsade de Pointes occurred in 25/762 patients (3.3%) receiving TIKOSYN. The majority of cases (76%) occurred within the first 3 days of dosing. In all, 437/762 (57%) of patients on TIKOSYN and 459/756 (61%) on placebo required hospitalization. Of these, 229/762 (30%) of patients on TIKOSYN and 290/756 (38%) on placebo required hospitalization because of worsening heart failure.

DIAMOND MI studied 1510 patients hospitalized with recent myocardial infarction (2–7 days) who had confirmed impaired left ventricular function (ejection fraction  $\leq 35\%$ ). Patients received a median duration of therapy of greater than one year. There were 230 deaths in patients randomized to TIKOSYN (n=749) and 243 deaths in patients randomized to placebo (n=761). The probability of survival at one year was 79% (95% CI: 76% – 82%) in the TIKOSYN group and 77% (95% CI: 74% – 80%) in the placebo group. Cardiac and arrhythmic mortality showed a similar result. Torsade de Pointes occurred in 7/749 patients (0.9%) receiving TIKOSYN. Of these, 4 cases occurred within the first 3 days of dosing and 3 cases occurred between Day 4 and the conclusion of the study. In all, 371/749 (50%) of patients on TIKOSYN and 419/761 (55%)

on placebo required hospitalization. Of these, 200/749 (27%) of patients on TIKOSYN and 205/761 (27%) on placebo required hospitalization because of worsening heart failure.

DIAMOND Patients with Atrial Fibrillation (the DIAMOND AF subpopulation). There were 506 patients in the two DIAMOND studies who had atrial fibrillation (AF) at entry to the studies (249 randomized to TIKOSYN and 257 randomized to placebo). DIAMOND AF patients randomized to TIKOSYN received 250 mcg BID; 65% of these patients had impaired renal function, so that 250 mcg BID represents the dose they would have received in the AF trials, which would give drug exposure similar to a person with normal renal function given 500 mcg BID. In the DIAMOND AF subpopulation, there were 111 deaths (45%) in the 249 patients in the TIKOSYN group and 116 deaths (45%) in the 257 patients in the placebo group. Hospital readmission rates for any reason were 125/249 or 50% on TIKOSYN and 156/257 or 61% for placebo. Of these, readmission rates for worsening heart failure were 73/249 or 29% on TIKOSYN and 102/257 or 40% for placebo.

Of the 506 patients in the DIAMOND studies who had atrial fibrillation or flutter at baseline, 12% of patients in the TIKOSYN group and 2% of patients in the placebo group had converted to normal sinus rhythm after one month. In those patients converted to normal sinus rhythm, 79% of the TIKOSYN group and 42% of the placebo group remained in normal sinus rhythm for one year.

In the DIAMOND studies, although Torsade de Pointes occurred more frequently in the TIKOSYN-treated patients (see **ADVERSE REACTIONS**), TIKOSYN, given with an initial 3-day hospitalization and with dose modified for reduced creatinine clearance and increased QT interval, was not associated with an excess risk of mortality in these populations with structural heart disease in the individual studies or in an analysis of the combined studies. The presence of atrial fibrillation did not affect outcome.

## INDICATIONS AND USAGE

### **Maintenance of Normal Sinus Rhythm (Delay in AF/AFI Recurrence)**

TIKOSYN is indicated for the maintenance of normal sinus rhythm (delay in time to recurrence of atrial fibrillation/atrial flutter [AF/AFI]) in patients with atrial fibrillation/atrial flutter of greater than one week duration who have been converted to normal sinus rhythm. Because TIKOSYN can cause life threatening ventricular arrhythmias, it should be reserved for patients in whom atrial fibrillation/atrial flutter is highly symptomatic.

In general, antiarrhythmic therapy for atrial fibrillation/atrial flutter aims to prolong the time in normal sinus rhythm. Recurrence is expected in some patients (see **CLINICAL STUDIES**).

### **Conversion of Atrial Fibrillation/Flutter**

TIKOSYN is indicated for the conversion of atrial fibrillation and atrial flutter to normal sinus rhythm.

TIKOSYN has not been shown to be effective in patients with paroxysmal atrial fibrillation.

## CONTRAINDICATIONS

TIKOSYN is contraindicated in patients with congenital or acquired long QT syndromes. TIKOSYN should not be used in patients with a baseline QT interval or QTc >440 msec (500 msec in patients with ventricular conduction abnormalities). TIKOSYN is also contraindicated in patients with severe renal impairment (calculated creatinine clearance <20 mL/min).

The concomitant use of verapamil or the cation transport system inhibitors cimetidine, trimethoprim (alone or in combination with sulfamethoxazole), or ketoconazole with TIKOSYN is contraindicated (see **WARNINGS and PRECAUTIONS, Drug-Drug Interactions**), as each of these drugs cause a substantial increase in dofetilide plasma concentrations. In addition, other known inhibitors of the renal cation transport system such as prochlorperazine, dolutegravir and megestrol should not be used in patients on TIKOSYN.

The concomitant use of hydrochlorothiazide (alone or in combinations such as with triamterene) with TIKOSYN is contraindicated (see **PRECAUTIONS, Drug-Drug Interactions**) because this has been shown to significantly increase dofetilide plasma concentrations and QT interval prolongation.

TIKOSYN is also contraindicated in patients with a known hypersensitivity to the drug.

## WARNINGS

**Ventricular Arrhythmia:** TIKOSYN (dofetilide) can cause serious ventricular arrhythmias, primarily Torsade de Pointes (TdP) type ventricular tachycardia, a polymorphic ventricular tachycardia associated with QT interval prolongation. QT interval prolongation is directly related to dofetilide plasma concentration. Factors such as reduced creatinine clearance or certain dofetilide drug interactions will increase dofetilide plasma concentration. The risk of TdP can be reduced by controlling the plasma concentration through adjustment of the initial dofetilide dose according to creatinine clearance and by monitoring the ECG for excessive increases in the QT interval.

**Treatment with dofetilide must therefore be started only in patients placed for a minimum of three days in a facility that can provide electrocardiographic monitoring and in the presence of personnel trained in the management of serious ventricular arrhythmias. Calculation of the creatinine clearance for all patients must precede administration of the first dose of dofetilide. For detailed instructions regarding dose selection, see DOSAGE AND ADMINISTRATION.**

The risk of dofetilide induced ventricular arrhythmia was assessed in three ways in clinical studies: 1) by description of the QT interval and its relation to the dose and plasma concentration of dofetilide; 2) by observing the frequency of TdP in TIKOSYN-treated patients according to dose; 3) by observing the overall mortality rate in patients with atrial fibrillation and in patients with structural heart disease.

**Relation of QT Interval to Dose:** The QT interval increases linearly with increasing TIKOSYN dose (see Figures 1 and 2 in **CLINICAL PHARMACOLOGY and Dose-Response and Concentration Response for Increase in QT Interval**).



Frequency of Torsade de Pointes: In the supraventricular arrhythmia population (patients with AF and other supraventricular arrhythmias), the overall incidence of Torsade de Pointes was 0.8%. The frequency of TdP by dose is shown in Table 4. There were no cases of TdP on placebo.

**Table 4: Summary of Torsade de Pointes in Patients Randomized to Dofetilide by Dose; Patients with Supraventricular Arrhythmias**

	TIKOSYN Dose				
	<250 mcg BID	250 mcg BID	>250–500 mcg BID	>500 mcg BID	All Doses
Number of Patients	217	388	703	38	1346
Torsade de Pointes	0	1 (0.3%)	6 (0.9%)	4 (10.5%)	11 (0.8%)

As shown in Table 5, the rate of TdP was reduced when patients were dosed according to their renal function (see **CLINICAL PHARMACOLOGY, Pharmacokinetics in Special Populations, Renal Impairment and DOSAGE AND ADMINISTRATION**).

**Table 5: Incidence of Torsade de Pointes Before and After Introduction of Dosing According to Renal Function**

Population:	Total	Before	After
	n/N %	n/N %	n/N %
Supraventricular Arrhythmias	11/1346 (0.8%)	6/193 (3.1%)	5/1153 (0.4%)
DIAMOND CHF	25/762 (3.3%)	7/148 (4.7%)	18/614 (2.9%)
DIAMOND MI	7/749 (0.9%)	3/101 (3.0%)	4/648 (0.6%)
DIAMOND AF	4/249 (1.6%)	0/43 (0%)	4/206 (1.9%)

The majority of the episodes of TdP occurred within the first three days of TIKOSYN therapy (10/11 events in the studies of patients with supraventricular arrhythmias; 19/25 and 4/7 events in DIAMOND CHF and DIAMOND MI, respectively; 2/4 events in the DIAMOND AF subpopulation).

**Mortality:** In a pooled survival analysis of patients in the supraventricular arrhythmia population (low prevalence of structural heart disease), deaths occurred in 0.9% (12/1346) of patients receiving TIKOSYN and 0.4% (3/677) in the placebo group. Adjusted for duration of therapy, primary diagnosis, age, gender, and prevalence of structural heart disease, the point estimate of the hazard ratio for the pooled studies (TIKOSYN/placebo) was 1.1 (95% CI: 0.3, 4.3). The DIAMOND CHF and MI trials examined mortality in patients with structural heart disease (ejection fraction  $\leq 35\%$ ). In these large, double-blind studies, deaths occurred in 36% (541/1511) of TIKOSYN patients and 37% (560/1517) of placebo patients. In an analysis of 506 DIAMOND patients with atrial fibrillation/flutter at baseline, one year mortality on TIKOSYN was 31% vs. 32% on placebo (see **CLINICAL STUDIES**).

Because of the small number of events, an excess mortality due to TIKOSYN cannot be ruled out with confidence in the pooled survival analysis of placebo-controlled trials in patients with supraventricular arrhythmias. However, it is reassuring that in two large placebo-controlled mortality studies in patients with significant heart disease (DIAMOND CHF/MI), there were no more deaths in TIKOSYN-treated patients than in patients given placebo (see **CLINICAL STUDIES**).

### **Drug-Drug Interactions (see CONTRAINDICATIONS)**

Because there is a linear relationship between dofetilide plasma concentration and QTc, concomitant drugs that interfere with the metabolism or renal elimination of dofetilide may

increase the risk of arrhythmia (Torsade de Pointes). TIKOSYN is metabolized to a small degree by the CYP3A4 isoenzyme of the cytochrome P450 system and an inhibitor of this system could increase systemic dofetilide exposure. More important, dofetilide is eliminated by cationic renal secretion, and three inhibitors of this process have been shown to increase systemic dofetilide exposure. The magnitude of the effect on renal elimination by cimetidine, trimethoprim, and ketoconazole (all contraindicated concomitant uses with dofetilide) suggests that all renal cation transport inhibitors should be contraindicated.

### **Hypokalemia and Potassium-Depleting Diuretics**

Hypokalemia or hypomagnesemia may occur with administration of potassium-depleting diuretics, increasing the potential for Torsade de Pointes. Potassium levels should be within the normal range prior to administration of TIKOSYN and maintained in the normal range during administration of TIKOSYN (see **DOSAGE AND ADMINISTRATION**).

### **Use with Drugs that Prolong QT Interval and Antiarrhythmic Agents**

The use of TIKOSYN in conjunction with other drugs that prolong the QT interval has not been studied and is not recommended. Such drugs include phenothiazines, cisapride, bepridil, tricyclic antidepressants, certain oral macrolides, and certain fluoroquinolones. Class I or Class III antiarrhythmic agents should be withheld for at least three half-lives prior to dosing with TIKOSYN. In clinical trials, TIKOSYN was administered to patients previously treated with oral amiodarone only if serum amiodarone levels were below 0.3 mg/L or amiodarone had been withdrawn for at least three months.

## **PRECAUTIONS**

### **Renal Impairment**

The overall systemic clearance of dofetilide is decreased and plasma concentration increased with decreasing creatinine clearance. The dose of TIKOSYN must be adjusted based on creatinine clearance (see **DOSAGE AND ADMINISTRATION**). Patients undergoing dialysis were not included in clinical studies, and appropriate dosing recommendations for these patients are unknown. There is no information about the effectiveness of hemodialysis in removing dofetilide from plasma.

### **Hepatic Impairment**

After adjustment for creatinine clearance, no additional dose adjustment is required for patients with mild or moderate hepatic impairment. Patients with severe hepatic impairment have not been studied. TIKOSYN should be used with particular caution in these patients.

### **Cardiac Conduction Disturbances**

Animal and human studies have not shown any adverse effects of dofetilide on conduction velocity. No effect on AV nodal conduction following TIKOSYN treatment was noted in normal volunteers and in patients with 1<sup>st</sup> degree heart block. Patients with sick sinus syndrome or with 2<sup>nd</sup> or 3<sup>rd</sup> degree heart block were not included in the Phase 3 clinical trials unless a functioning pacemaker was present. TIKOSYN has been used safely in conjunction with pacemakers (53 patients in DIAMOND studies, 136 in trials in patients with ventricular and supraventricular arrhythmias).

## Information for Patients

Please refer patient to the Medication Guide.

**Prior to initiation of TIKOSYN therapy, the patient should be advised to read the Medication Guide and reread it each time therapy is renewed in case the patient's status has changed. The patient should be fully instructed on the need for compliance with the recommended dosing of TIKOSYN and the potential for drug interactions, and the need for periodic monitoring of QTc and renal function to minimize the risk of serious abnormal rhythms.**

**Medications and Supplements:** Assessment of patients' medication history should include all over-the-counter, prescription, and herbal/natural preparations with emphasis on preparations that may affect the pharmacokinetics of TIKOSYN such as cimetidine (see **CONTRAINDICATIONS**), trimethoprim alone or in combination with sulfamethoxazole (see **WARNINGS, CONTRAINDICATIONS**), prochlorperazine (see **WARNINGS, CONTRAINDICATIONS**), megestrol (see **WARNINGS, CONTRAINDICATIONS**), ketoconazole (see **WARNINGS, CONTRAINDICATIONS**), dolutegravir (see **CONTRAINDICATIONS**), hydrochlorothiazide (alone or in combinations such as with triamterene) (see **CONTRAINDICATIONS**), other cardiovascular drugs (especially verapamil – see **CONTRAINDICATIONS**), phenothiazines, and tricyclic antidepressants (see **WARNINGS**). If a patient is taking TIKOSYN and requires anti-ulcer therapy, omeprazole, ranitidine, or antacids (aluminum and magnesium hydroxides) should be used as alternatives to cimetidine, as these agents have no effect on the pharmacokinetics of TIKOSYN. Patients should be instructed to notify their health care providers of any change in over-the-counter, prescription, or supplement use. If a patient is hospitalized or is prescribed a new medication for any condition, the patient must inform the health care provider of ongoing TIKOSYN therapy. Patients should also check with their health care provider and/or pharmacist prior to taking a new over-the-counter preparation.

**Electrolyte Imbalance:** If patients experience symptoms that may be associated with altered electrolyte balance, such as excessive or prolonged diarrhea, sweating, or vomiting or loss of appetite or thirst, these conditions should immediately be reported to their health care provider.

**Dosing Schedule:** Patients should be instructed NOT to double the next dose if a dose is missed. The next dose should be taken at the usual time.

## Drug/Laboratory Test Interactions

None known.

## Drug-Drug Interactions

**Cimetidine:** (see **WARNINGS, CONTRAINDICATIONS**) Concomitant use of cimetidine is contraindicated. Cimetidine at 400 mg BID (the usual prescription dose) co-administered with TIKOSYN (500 mcg BID) for 7 days has been shown to increase dofetilide plasma levels by 58%. Cimetidine at doses of 100 mg BID (OTC dose) resulted in a 13% increase in dofetilide plasma levels (500 mcg single dose). No studies have been conducted at intermediate doses of cimetidine. If a patient requires TIKOSYN and anti-ulcer therapy, it is suggested that omeprazole, ranitidine, or antacids (aluminum and magnesium hydroxides) be used as alternatives to cimetidine, as these agents have no effect on the pharmacokinetic profile of TIKOSYN.

**Verapamil:** (see **CONTRAINDICATIONS**) Concomitant use of verapamil is contraindicated. Co-administration of TIKOSYN with verapamil resulted in increases in dofetilide peak plasma levels of 42%, although overall exposure to dofetilide was not significantly increased. In an analysis of the supraventricular arrhythmia and DIAMOND patient populations, the concomitant administration of verapamil with dofetilide was associated with a higher occurrence of Torsade de Pointes.

**Ketoconazole:** (see **WARNINGS, CONTRAINDICATIONS**) Concomitant use of ketoconazole is contraindicated. Ketoconazole at 400 mg daily (the maximum approved prescription dose) co-administered with TIKOSYN (500 mcg BID) for 7 days has been shown to increase dofetilide  $C_{max}$  by 53% in males and 97% in females, and AUC by 41% in males and 69% in females.

**Trimethoprim Alone or in Combination with Sulfamethoxazole:** (see **WARNINGS, CONTRAINDICATIONS**) Concomitant use of trimethoprim alone or in combination with sulfamethoxazole is contraindicated. Trimethoprim 160 mg in combination with 800 mg sulfamethoxazole co-administered BID with TIKOSYN (500 mcg BID) for 4 days has been shown to increase dofetilide AUC by 103% and  $C_{max}$  by 93%.

**Hydrochlorothiazide (HCTZ) Alone or in Combination with Triamterene:** (see **CONTRAINDICATIONS**) Concomitant use of HCTZ alone or in combination with triamterene is contraindicated. HCTZ 50 mg QD or HCTZ/triamterene 50/100 mg QD was co-administered with TIKOSYN (500 mcg BID) for 5 days (following 2 days of diuretic use at half dose). In patients receiving HCTZ alone, dofetilide AUC increased by 27% and  $C_{max}$  by 21%. However, the pharmacodynamic effect increased by 197% (QTc increase over time) and by 95% (maximum QTc increase). In patients receiving HCTZ in combination with triamterene, dofetilide AUC increased by 30% and  $C_{max}$  by 16%. However, the pharmacodynamic effect increased by 190% (QTc increase over time) and by 84% (maximum QTc increase). The pharmacodynamic effects can be explained by a combination of the increase in dofetilide exposure and the reductions in serum potassium. In the DIAMOND trials, 1252 patients were treated with TIKOSYN and diuretics concomitantly, of whom 493 died compared to 508 deaths among the 1248 patients receiving placebo and diuretics. Of the 229 patients who had potassium depleting diuretics added to their concomitant medications in the DIAMOND trials, the patients on TIKOSYN had a non-significantly reduced relative risk for death of 0.68 (95% CI: 0.376, 1.230).

### Potential Drug Interactions

Dofetilide is eliminated in the kidney by cationic secretion. Inhibitors of renal cationic secretion are contraindicated with TIKOSYN. In addition, drugs that are actively secreted via this route (e.g., triamterene, metformin, and amiloride) should be co-administered with care as they might increase dofetilide levels.

Dofetilide is metabolized to a small extent by the CYP3A4 isoenzyme of the cytochrome P450 system. Inhibitors of the CYP3A4 isoenzyme could increase systemic dofetilide exposure. Inhibitors of this isoenzyme (e.g., macrolide antibiotics, azole antifungal agents, protease inhibitors, serotonin reuptake inhibitors, amiodarone, cannabinoids, diltiazem, grapefruit juice, nefazadone, norfloxacin, quinine, zafirlukast) should be cautiously co-administered with

TIKOSYN as they can potentially increase dofetilide levels. Dofetilide is not an inhibitor of CYP3A4 nor of other cytochrome P450 isoenzymes (e.g., CYP2C9, CYP2D6) and is not expected to increase levels of drugs metabolized by CYP3A4.

### Other Drug Interaction Information

**Digoxin:** Studies in healthy volunteers have shown that TIKOSYN does not affect the pharmacokinetics of digoxin. In patients, the concomitant administration of digoxin with dofetilide was associated with a higher occurrence of Torsade de Pointes. It is not clear whether this represents an interaction with TIKOSYN or the presence of more severe structural heart disease in patients on digoxin; structural heart disease is a known risk factor for arrhythmia. No increase in mortality was observed in patients taking digoxin as concomitant medication.

**Other Drugs:** In healthy volunteers, amlodipine, phenytoin, glyburide, ranitidine, omeprazole, hormone replacement therapy (a combination of conjugated estrogens and medroxyprogesterone), antacid (aluminum and magnesium hydroxides), and theophylline did not affect the pharmacokinetics of TIKOSYN. In addition, studies in healthy volunteers have shown that TIKOSYN does not affect the pharmacokinetics or pharmacodynamics of warfarin, or the pharmacokinetics of propranolol (40 mg twice daily), phenytoin, theophylline, or oral contraceptives.

Population pharmacokinetic analyses were conducted on plasma concentration data from 1445 patients in clinical trials to examine the effects of concomitant medications on clearance or volume of distribution of dofetilide. Concomitant medications were grouped as ACE inhibitors, oral anticoagulants, calcium channel blockers, beta blockers, cardiac glycosides, inducers of CYP3A4, substrates and inhibitors of CYP3A4, substrates and inhibitors of P-glycoprotein, nitrates, sulphonylureas, loop diuretics, potassium sparing diuretics, thiazide diuretics, substrates and inhibitors of tubular organic cation transport, and QTc-prolonging drugs. Differences in clearance between patients on these medications (at any occasion in the study) and those off medications varied between -16% and +3%. The mean clearances of dofetilide were 16% and 15% lower in patients on thiazide diuretics and inhibitors of tubular organic cation transport, respectively.

### Carcinogenesis, Mutagenesis, Impairment of Fertility

Dofetilide had no genotoxic effects, with or without metabolic activation, based on the bacterial mutation assay and tests of cytogenetic aberrations *in vivo* in mouse bone marrow and *in vitro* in human lymphocytes. Rats and mice treated with dofetilide in the diet for two years showed no evidence of an increased incidence of tumors compared to controls. The highest dofetilide dose administered for 24 months was 10 mg/kg/day to rats and 20 mg/kg/day to mice. Mean dofetilide AUCs<sub>(0-24hr)</sub> at these doses were about 26 and 10 times, respectively, the maximum likely human AUC.

There was no effect on mating or fertility when dofetilide was administered to male and female rats at doses as high as 1.0 mg/kg/day, a dose that would be expected to provide a mean dofetilide AUC<sub>(0-24hr)</sub> about 3 times the maximum likely human AUC. Increased incidences of testicular atrophy and epididymal oligospermia and a reduction in testicular weight were, however, observed in other studies in rats. Reduced testicular weight and increased incidence of testicular atrophy were also consistent findings in dogs and mice. The no effect doses for these findings in chronic administration studies in these 3 species (3, 0.1, and 6 mg/kg/day) were

associated with mean dofetilide AUCs that were about 4, 1.3, and 3 times the maximum likely human AUC, respectively.

### **Pregnancy Category C**

Dofetilide has been shown to adversely affect *in utero* growth and survival of rats and mice when orally administered during organogenesis at doses of 2 or more mg/kg/day. Other than an increased incidence of non-ossified 5<sup>th</sup> metacarpal, and the occurrence of hydroureter and hydronephroses at doses as low as 1 mg/kg/day in the rat, structural anomalies associated with drug treatment were not observed in either species at doses below 2 mg/kg/day. The clearest drug-effect associations were for sternebral and vertebral anomalies in both species; cleft palate, adactyly, levocardia, dilation of cerebral ventricles, hydroureter, hydronephroses, and unossified metacarpal in the rat; and increased incidence of unossified calcaneum in the mouse. The “no observed adverse effect dose” in both species was 0.5 mg/kg/day. The mean dofetilide AUCs<sub>(0–24hr)</sub> at this dose in the rat and mouse are estimated to be about equal to the maximum likely human AUC and about half the likely human AUC, respectively. There are no adequate and well controlled studies in pregnant women. Therefore, dofetilide should only be administered to pregnant women where the benefit to the patient justifies the potential risk to the fetus.

### **Nursing Mothers**

There is no information on the presence of dofetilide in breast milk. Patients should be advised not to breast-feed an infant if they are taking TIKOSYN.

### **Geriatric Use**

Of the total number of patients in clinical studies of TIKOSYN, 46% were 65 to 89 years old. No overall differences in safety, effect on QTc, or effectiveness were observed between elderly and younger patients. Because elderly patients are more likely to have decreased renal function with a reduced creatinine clearance, care must be taken in dose selection (see **DOSAGE AND ADMINISTRATION**).

### **Use in Women**

Female patients constituted 32% of the patients in the placebo-controlled trials of TIKOSYN. As with other drugs that cause Torsade de Pointes, TIKOSYN was associated with a greater risk of Torsade de Pointes in female patients than in male patients. During the TIKOSYN clinical development program, the risk of Torsade de Pointes in females was approximately 3 times the risk in males. Unlike Torsade de Pointes, the incidence of other ventricular arrhythmias was similar in female patients receiving TIKOSYN and patients receiving placebo. Although no study specifically investigated this risk, in post-hoc analyses, no increased mortality was observed in females on TIKOSYN compared to females on placebo.

### **Pediatric Use**

The safety and effectiveness of TIKOSYN in children (<18 years old) has not been established.

## **ADVERSE REACTIONS**

The TIKOSYN clinical program involved approximately 8,600 patients in 130 clinical studies of normal volunteers and patients with supraventricular and ventricular arrhythmias. TIKOSYN was administered to 5,194 patients, including two large, placebo-controlled mortality trials (DIAMOND CHF and DIAMOND MI) in which 1,511 patients received TIKOSYN for up to three years.

In the following section, adverse reaction data for cardiac arrhythmias and non-cardiac adverse reactions are presented separately for patients included in the supraventricular arrhythmia development program and for patients included in the DIAMOND CHF and MI mortality trials (see **CLINICAL STUDIES, Safety in Patients with Structural Heart Disease, DIAMOND Studies**, for a description of these trials).

In studies of patients with supraventricular arrhythmias, a total of 1,346 and 677 patients were exposed to TIKOSYN and placebo for 551 and 207 patient years, respectively. A total of 8.7% of patients in the dofetilide groups were discontinued from clinical trials due to adverse events compared to 8.0% in the placebo groups. The most frequent reason for discontinuation (>1%) was ventricular tachycardia (2.0% on dofetilide vs. 1.3% on placebo). The most frequent adverse events were headache, chest pain, and dizziness.

**Serious Arrhythmias and Conduction Disturbances:** Torsade de Pointes is the only arrhythmia that showed a dose-response relationship to TIKOSYN treatment. It did not occur in placebo treated patients. The incidence of Torsade de Pointes in patients with supraventricular arrhythmias was 0.8% (11/1346) (see **WARNINGS**). The incidence of Torsade de Pointes in patients who were dosed according to the recommended dosing regimen (see **DOSAGE AND ADMINISTRATION**) was 0.8% (4/525). Table 6 shows the frequency by randomized dose of serious arrhythmias and conduction disturbances reported as adverse events in patients with supraventricular arrhythmias.

**Table 6: Incidence of Serious Arrhythmias and Conduction Disturbances in Patients with Supraventricular Arrhythmias**

Arrhythmia event:	TIKOSYN Dose				Placebo
	<250 mcg BID N=217	250 mcg BID N=388	>250–500 mcg BID N=703	>500 mcg BID N=38	N=677
Ventricular arrhythmias* ^	3.7%	2.6%	3.4%	15.8%	2.7%
Ventricular fibrillation	0	0.3%	0.4%	2.6%	0.1%
Ventricular tachycardia^	3.7%	2.6%	3.3%	13.2%	2.5%
Torsade de Pointes	0	0.3%	0.9%	10.5%	0
Various forms of block					
AV block	0.9%	1.5%	0.4%	0	0.3%
Bundle branch block	0	0.5%	0.1%	0	0.1%
Heart block	0	0.5%	0.1%	0	0.1%

\* Patients with more than one arrhythmia are counted only once in this category.

^ Ventricular arrhythmias and ventricular tachycardia include all cases of Torsade de Pointes.

In the DIAMOND trials, a total of 1,511 patients were exposed to TIKOSYN for 1757 patient years. The incidence of Torsade de Pointes was 3.3% in CHF patients and 0.9% in patients with a recent MI.

Table 7 shows the incidence of serious arrhythmias and conduction disturbances reported as adverse events in the DIAMOND subpopulation that had AF at entry to these trials.

**Table 7: Incidence of Serious Arrhythmias and Conduction Disturbances in Patients with AF at Entry to the DIAMOND Studies**

	TIKOSYN	Placebo
	N=249	N=257
Ventricular arrhythmias* ^	14.5%	13.6%
Ventricular fibrillation	4.8%	3.1%
Ventricular tachycardia^	12.4%	11.3%
Torsade de Pointes	1.6%	0
Various forms of block		
AV block	0.8%	2.7%
(Left) bundle branch block	0	0.4%
Heart block	1.2%	0.8%

\* Patients with more than one arrhythmia are counted only once in this category.

^ Ventricular arrhythmias and ventricular tachycardia include all cases of Torsade de Pointes.

**Other Adverse Reactions:** Table 8 presents other adverse events reported with a frequency of >2% on TIKOSYN and reported numerically more frequently on TIKOSYN than on placebo in the studies of patients with supraventricular arrhythmias.

**Table 8: Frequency of Adverse Events Occurring at >2% on TIKOSYN, and Numerically More Frequently on TIKOSYN than Placebo in Patients with Supraventricular Arrhythmias**

	TIKOSYN	Placebo
Adverse Event	%	%
headache	11	9
chest pain	10	7
dizziness	8	6
respiratory tract infection	7	5
dyspnea	6	5
nausea	5	4
flu syndrome	4	2
insomnia	4	3
accidental injury	3	1
back pain	3	2
procedure (medical/surgical/health service)	3	2
diarrhea	3	2
rash	3	2
abdominal pain	3	2

Adverse events reported at a rate >2% but no more frequently on TIKOSYN than on placebo were: angina pectoris, anxiety, arthralgia, asthenia, atrial fibrillation, complications (application, injection, incision, insertion, or device), hypertension, pain, palpitation, peripheral edema, supraventricular tachycardia, sweating, urinary tract infection, ventricular tachycardia.

The following adverse events have been reported with a frequency of ≤2% and numerically more frequently with TIKOSYN than placebo in patients with supraventricular arrhythmias: angioedema, bradycardia, cerebral ischemia, cerebrovascular accident, edema, facial paralysis,



flaccid paralysis, heart arrest, increased cough, liver damage, migraine, myocardial infarct, paralysis, paresthesia, sudden death, and syncope.

The incidences of clinically significant laboratory test abnormalities in patients with supraventricular arrhythmias were similar for patients on TIKOSYN and those on placebo. No clinically relevant effects were noted in serum alkaline phosphatase, serum GGT, LDH, AST, ALT, total bilirubin, total protein, blood urea nitrogen, creatinine, serum electrolytes (calcium, chloride, glucose, magnesium, potassium, sodium), or creatine kinase. Similarly, no clinically relevant effects were observed in hematologic parameters.

In the DIAMOND population, adverse events other than those related to the post-infarction and heart failure patient population were generally similar to those seen in the supraventricular arrhythmia groups.

## OVERDOSAGE

There is no known antidote to TIKOSYN; treatment of overdose should therefore be symptomatic and supportive. The most prominent manifestation of overdosage is likely to be excessive prolongation of the QT interval.

In cases of overdose, cardiac monitoring should be initiated. Charcoal slurry may be given soon after overdosing but has been useful only when given within 15 minutes of TIKOSYN administration. Treatment of Torsade de Pointes or overdose may include administration of isoproterenol infusion, with or without cardiac pacing. Administration of intravenous magnesium sulfate may be effective in the management of Torsade de Pointes. Close medical monitoring and supervision should continue until the QT interval returns to normal levels.

Isoproterenol infusion into anesthetized dogs with cardiac pacing rapidly attenuates the dofetilide-induced prolongation of atrial and ventricular effective refractory periods in a dose-dependent manner. Magnesium sulfate, administered prophylactically either intravenously or orally in a dog model, was effective in the prevention of dofetilide-induced Torsade de Pointes ventricular tachycardia. Similarly, in man, intravenous magnesium sulfate may terminate Torsade de Pointes, irrespective of cause.

TIKOSYN overdose was rare in clinical studies; there were two reported cases of TIKOSYN overdose in the oral clinical program. One patient received very high multiples of the recommended dose (28 capsules), was treated with gastric aspiration 30 minutes later, and experienced no events. One patient inadvertently received two 500 mcg doses one hour apart and experienced ventricular fibrillation and cardiac arrest 2 hours after the second dose.

In the supraventricular arrhythmia population, only 38 patients received doses greater than 500 mcg BID, all of whom received 750 mcg BID irrespective of creatinine clearance. In this very small patient population, the incidence of Torsade de Pointes was 10.5% (4/38 patients), and the incidence of new ventricular fibrillation was 2.6% (1/38 patients).

## DOSAGE AND ADMINISTRATION

- Therapy with TIKOSYN must be initiated (and, if necessary, re-initiated) in a setting that provides continuous electrocardiographic (ECG) monitoring and in the presence of personnel trained in the management of serious ventricular arrhythmias. Patients should continue to be monitored in this way for a minimum of three days. Additionally, patients should not be discharged within 12 hours of electrical or pharmacological conversion to normal sinus rhythm.
- **The dose of TIKOSYN must be individualized according to calculated creatinine clearance and QTc. (QT interval should be used if the heart rate is <60 beats per minute. There are no data on use of TIKOSYN when the heart rate is <50 beats per minute.)** The usual recommended dose of TIKOSYN is 500 mcg BID, as modified by the dosing algorithm described below. For consideration of a lower dose, see **Special Considerations** below.
- Serum potassium should be maintained within the normal range before TIKOSYN treatment is initiated and should be maintained within the normal range while the patient remains on TIKOSYN therapy. (See **WARNINGS, Hypokalemia and Potassium-Depleting Diuretics**). In clinical trials, potassium levels were generally maintained above 3.6–4.0 mEq/L.
- Patients with atrial fibrillation should be anticoagulated according to usual medical practice prior to electrical or pharmacological cardioversion. Anticoagulant therapy may be continued after cardioversion according to usual medical practice for the treatment of people with AF. Hypokalemia should be corrected before initiation of TIKOSYN therapy (see **WARNINGS, Ventricular Arrhythmia**).
- Patients to be discharged on TIKOSYN therapy from an inpatient setting as described above must have an adequate supply of TIKOSYN, at the patient's individualized dose, to allow uninterrupted dosing until the patient receives the first outpatient supply.
- TIKOSYN is distributed only to those hospitals and other appropriate institutions confirmed to have received applicable dosing and treatment initiation education programs. Inpatient and subsequent outpatient discharge and refill prescriptions are filled only upon confirmation that the prescribing physician has received applicable dosing and treatment initiation education programs. For this purpose, a list for use by pharmacists is maintained containing hospitals and physicians who have received one of the education programs.

### Instructions for Individualized Dose Initiation

#### Initiation of TIKOSYN Therapy

**Step 1.** Electrocardiographic assessment: Prior to administration of the first dose, the QTc must be determined using an average of 5–10 beats. If the QTc is greater than 440 msec (500 msec in patients with ventricular conduction abnormalities), TIKOSYN is contraindicated. If heart rate is less than 60 beats per minute, QT interval should be used. Patients with heart rates <50 beats per minute have not been studied.

**Step 2.** Calculation of creatinine clearance: Prior to the administration of the first dose, the patient's creatinine clearance must be calculated using the following formula:

$$\text{creatinine clearance (male)} = \frac{(140 - \text{age}) \times \text{actual body weight in kg}}{72 \times \text{serum creatinine (mg/dL)}}$$

$$\text{creatinine clearance (female)} = \frac{(140 - \text{age}) \times \text{actual body weight in kg} \times 0.85}{72 \times \text{serum creatinine (mg/dL)}}$$

When serum creatinine is given in  $\mu\text{mol/L}$ , divide the value by 88.4 ( $1 \text{ mg/dL} = 88.4 \mu\text{mol/L}$ ).

**Step 3.** Starting Dose: The starting dose of TIKOSYN is determined as follows:

<u>Calculated Creatinine Clearance</u>	<u>TIKOSYN Dose</u>
>60 mL/min	500 mcg twice daily
40 – 60 mL/min	250 mcg twice daily
20 – <40 mL/min	125 mcg twice daily
<20 mL/min	Dofetilide is contraindicated in these patients

**Step 4.** Administer the adjusted TIKOSYN dose and begin continuous ECG monitoring.

**Step 5.** At 2–3 hours after administering the first dose of TIKOSYN, determine the QTc. If the QTc has increased by greater than 15% compared to the baseline established in Step 1 OR if the QTc is greater than 500 msec (550 msec in patients with ventricular conduction abnormalities), subsequent dosing should be adjusted as follows:

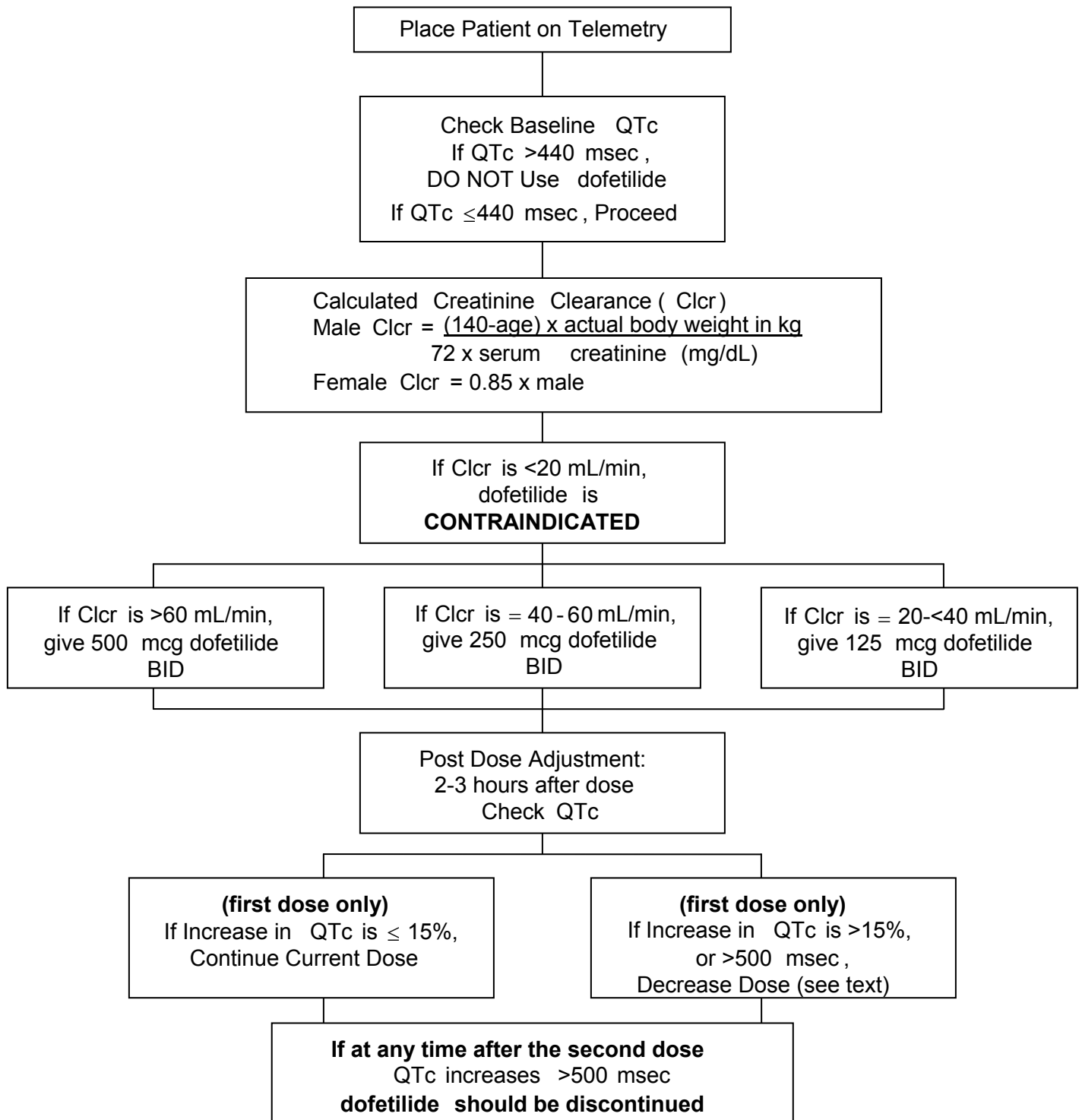
<u>If the Starting Dose Based on Creatinine Clearance is:</u>	<u>Then the Adjusted Dose (for QTc Prolongation) is:</u>
500 mcg twice daily	250 mcg twice daily
250 mcg twice daily	125 mcg twice daily
125 mcg twice daily	125 mcg once a day

**Step 6.** At 2–3 hours after each subsequent dose of TIKOSYN, determine the QTc (for in-hospital doses 2–5). No further down titration of TIKOSYN based on QTc is recommended.

NOTE: If at any time after the second dose of TIKOSYN is given the QTc is greater than 500 msec (550 msec in patients with ventricular conduction abnormalities), TIKOSYN should be discontinued.

**Step 7.** Patients are to be continuously monitored by ECG for a minimum of three days, or for a minimum of 12 hours after electrical or pharmacological conversion to normal sinus rhythm, whichever is greater.

The steps described above are summarized in the following diagram:



## Maintenance of TIKOSYN Therapy

Renal function and QTc should be re-evaluated every three months or as medically warranted. If QTc exceeds 500 milliseconds (550 msec in patients with ventricular conduction abnormalities), TIKOSYN therapy should be discontinued and patients should be carefully monitored until QTc returns to baseline levels. If renal function deteriorates, adjust dose as described in **Initiation of TIKOSYN Therapy, Step 3**.

### Special Considerations

**Consideration of a Dose Lower than that Determined by the Algorithm:** The dosing algorithm shown above should be used to determine the individualized dose of TIKOSYN. In clinical trials (see **CLINICAL STUDIES**), the highest dose of 500 mcg BID of TIKOSYN as modified by the dosing algorithm led to greater effectiveness than lower doses of 125 or 250 mcg BID as modified by the dosing algorithm. The risk of Torsade de Pointes, however, is related to dose as well as to patient characteristics (see **WARNINGS**). Physicians, in consultation with their patients, may therefore in some cases choose doses lower than determined by the algorithm. It is critically important that if at any time this lower dose is increased, the patient needs to be rehospitalized for three days. Previous toleration of higher doses does not eliminate the need for rehospitalization.

The maximum recommended dose in patients with a calculated creatinine clearance greater than 60 mL/min is 500 mcg BID; doses greater than 500 mcg BID have been associated with an increased incidence of Torsade de Pointes.

A patient who misses a dose should NOT double the next dose. The next dose should be taken at the usual time.

**Cardioversion:** If patients do not convert to normal sinus rhythm within 24 hours of initiation of TIKOSYN therapy, electrical conversion should be considered. Patients continuing on TIKOSYN after successful electrical cardioversion should continue to be monitored by electrocardiography for 12 hours post cardioversion, or a minimum of 3 days after initiation of TIKOSYN therapy, whichever is greater.

### Switch to TIKOSYN from Class I or other Class III Antiarrhythmic Therapy

Before initiating TIKOSYN therapy, previous antiarrhythmic therapy should be withdrawn under careful monitoring for a minimum of three (3) plasma half-lives. Because of the unpredictable pharmacokinetics of amiodarone, TIKOSYN should not be initiated following amiodarone therapy until amiodarone plasma levels are below 0.3 mcg/mL or until amiodarone has been withdrawn for at least three months.

### Stopping TIKOSYN Prior to Administration of Potentially Interacting Drugs

If TIKOSYN needs to be discontinued to allow dosing of other potentially interacting drug(s), a washout period of at least two days should be followed before starting the other drug(s).

## HOW SUPPLIED

TIKOSYN® 125 mcg (0.125 mg) capsules are supplied as No. 4 capsules with a light orange cap and white body, printed with TKN 125 PFIZER, and are available in:

TIKOSYN® 250 mcg (0.25 mg) capsules are supplied as No. 4 capsules, peach cap and body, printed with TKN 250 PFIZER, and are available in:

TIKOSYN® 500 mcg (0.5 mg) capsules are supplied as No. 2 capsules, peach cap and white body, printed with TKN 500 PFIZER, and are available in:

	125 mcg (0.125 mg)	250 mcg (0.25 mg)	500 mcg (0.5 mg)
Obverse	TKN 125	TKN 250	TKN 500
Reverse	PFIZER	PFIZER	PFIZER
Bottle of 14	0069-5800-61	0069-5810-61	0069-5820-61
Bottle of 60	0069-5800-60	0069-5810-60	0069-5820-60
Unit dose / 40	0069-5800-43	0069-5810-43	0069-5820-43

Store at controlled room temperature, 15° to 30°C (59° to 86°F).

PROTECT FROM MOISTURE AND HUMIDITY.

Dispense in tight containers (USP).

**Rx only**



LAB-0067-6.1  
Revised Month 2013

## MEDICATION GUIDE

### TIKOSYN® (Tee' ko sin) (dofetilide) Capsules

Read the Medication Guide before you start taking TIKOSYN and each time you get a refill. This information does not take the place of talking with your doctor about your condition or treatment.

#### What is the most important information I should know about TIKOSYN?

TIKOSYN can cause serious side effects, including a type of abnormal heartbeat called Torsade de Pointes, which can lead to death.

To establish the right dose of TIKOSYN, treatment with TIKOSYN must be started in a hospital where your heart rate and kidney function will be checked for the first 3 days of treatment. It is important that when you go home, you take the exact dose of TIKOSYN that your doctor prescribed for you.

While you take TIKOSYN, always watch for signs of abnormal heartbeat.

Call your doctor and go to the hospital right away if you:

- feel faint
- become dizzy, or
- have a fast heartbeat

#### What is TIKOSYN?

TIKOSYN is a prescription medicine that is used to treat an irregular heartbeat (atrial fibrillation or atrial flutter).

It is not known if TIKOSYN is safe and effective in children under 18 years of age.

#### Who should not take TIKOSYN?

Do not take TIKOSYN if you:

- have an irregular heartbeat called long QT syndrome
- have kidney problems or are on kidney dialysis
- take any of these medicines:
  - cimetidine (TAGAMET, TAGAMET HB)\*
  - verapamil (CALAN, CALAN SR, COVERA-HS, ISOPTIN, ISOPTIN SR, VERELAN, VERELAN PM, TARKA)\*
  - ketoconazole (NIZORAL, XOLEGEL, EXTINA)\*
  - trimethoprim alone (PROLOPRIM, TRIMPEX)\* or the combination of trimethoprim and sulfamethoxazole (BACTRIM, SEPTRA SULFATRIM)\*
  - prochlorperazine (COMPAZINE, COMPO)\*
  - megestrol (MEGACE)\*
  - dolutegravir (TIVICAY)
  - hydrochlorothiazide alone or in combination with other medicines (such as ESIDRIX, EZIDE, HYDRODIURIL, HYDRO-PAR, MICROZIDE, or ORETIC)\*

Ask your doctor if you are not sure if any of your medicines are the kind listed above.

- are allergic to dofetilide in TIKOSYN. See the end of this leaflet for a complete

list of ingredients in TIKOSYN.

### What should I tell my doctor before taking TIKOSYN?

Before taking TIKOSYN, tell your doctor about all of your medical conditions including if you:

- have heart problems
- have kidney or liver problems
- are pregnant or plan to become pregnant. It is not known if TIKOSYN will harm your unborn baby.
- are breast-feeding or plan to breast-feed. It is not known if TIKOSYN passes into your breast milk. You and your doctor should decide if you will take TIKOSYN or breast-feed. You should not do both.

Especially tell your doctor if you take medicines to treat:

- heart problems
- high blood pressure
- depression or other mental problems
- asthma
- allergies, or hay fever
- skin problems
- infections

Ask your doctor if you are not sure about the medicines you take. Tell your doctor about all prescription and non-prescription medicines, vitamins, dietary supplements, and any natural or herbal remedies. TIKOSYN and other medicines may affect each other, causing serious side effects. If you take TIKOSYN with certain medicines, you will be more likely to have a different type of abnormal heartbeat. See “Who should not take TIKOSYN?”

Know the medicines you take. Keep a list of your medicines and show it to your doctor and pharmacist when you get a new medicine.

### How should I take TIKOSYN?

- Take TIKOSYN exactly as your doctor tells you.
- Do not change your TIKOSYN dose unless your doctor tells you to.
- Your doctor will do tests before you start and while you take TIKOSYN.
- Do not stop taking TIKOSYN until your doctor tells you to stop. If you miss a dose, just take the next dose at your regular time. **Do not take 2 doses of TIKOSYN at the same time.**
- TIKOSYN can be taken with or without food.
- If you take too much TIKOSYN, call your doctor or go to the nearest hospital emergency room right away. Take your TIKOSYN capsules with you to show to the doctor.

### What are the possible side effects of TIKOSYN?

TIKOSYN can cause serious side effects, including a type of abnormal heartbeat called Torsade de Pointes, which can lead to death. See “What is the most important information I should know about TIKOSYN?”

The most common side effects of TIKOSYN include:

- headache



- chest pain
- dizziness

Call your doctor right away if you have signs of electrolyte imbalance:

- severe diarrhea
- unusual sweating
- vomiting
- not hungry (loss of appetite)
- increased thirst (drinking more than normal)

Tell your doctor if you have any side effects that bother you or do not go away.

These are not all the possible side effects of TIKOSYN. For more information, ask your doctor or pharmacist. Call your doctor for medical advice about side effects. You may report side effects to FDA at 1-800-FDA-1088.

### **How should I store TIKOSYN?**

- Store TIKOSYN between 59° to 86°F (15° to 30°C).
- Keep TIKOSYN away from moisture and humidity.
- Keep TIKOSYN in a tightly closed container.
- Keep TIKOSYN and all medicines out of the reach of children.

### **General information about TIKOSYN**

Medicines are sometimes prescribed for purposes other than those listed in a Medication Guide. Do not use TIKOSYN for a condition for which it was not prescribed. Do not give TIKOSYN to other people, even if they have the same symptoms you have. It may harm them.

This Medication Guide summarizes the most important information about TIKOSYN. If you would like more information, talk with your doctor. You can ask your doctor or pharmacist for information about TIKOSYN that is written for health professionals.

For more about TIKOSYN, go to [www.tikosyn.com](http://www.tikosyn.com) or call **1-877-TIKOSYN (1-877-845-6796)**.

### **What are the ingredients in TIKOSYN?**

**Active ingredient:** dofetilide

**Inactive ingredients:**

**Capsule fill:** microcrystalline cellulose, corn starch, colloidal silicon dioxide, and magnesium stearate

**Capsule shell:** gelatin, titanium dioxide, and FD&C Yellow 6

**Imprinting ink:** iron oxide black, shellac, n-butyl alcohol, isopropyl alcohol, propylene glycol, and ammonium hydroxide

\* Listed trademarks are the property of their respective owners.

**Rx only**



*Distributed by*

**Pfizer Labs**

Division of Pfizer Inc, NY, NY 10017

LAB-0405-1.1

Revised Month 2013

This Medication Guide has been approved by the U.S. Food and Drug Administration.

090177e184cb75fc\Approved\Approved On: 04-Dec-2013 22:20



U.S. Pharmaceuticals  
Pfizer Inc.  
235 East 42nd Street  
New York, NY 10017-5755

U.S. Pharmaceuticals

**New FDA Requirement: Prescriber Certification Needed to Prescribe TIKOSYN® (dofetilide)**

[Date]

Dear Dr [insert last name]:

**Per FDA requirements, in order to prescribe TIKOSYN, new prescribers are required to complete a one-time certification.** TIKOSYN is indicated for the conversion to and maintenance of normal sinus rhythm (delay in the time to recurrence of atrial fibrillation/atrial flutter) in highly symptomatic patients with atrial fibrillation/atrial flutter of greater than 1 week.

The TIKOSYN Education Distribution Program, currently known as the TIKOSYN Risk Evaluation and Mitigation Strategy (REMS), is required by the FDA to ensure safe use of TIKOSYN in order to mitigate the risk of induced arrhythmia by

- Ensuring that TIKOSYN is prescribed only by certified prescribers, dispensed only by certified dispensers and dispensed for use only with documentation of safe use conditions;
- Educating health care providers about the risks and the need to initiate and re-initiate therapy in a health care facility that can provide calculations of creatinine clearance, continuous electrocardiographic monitoring, and cardiac resuscitation;
- Informing patients about the serious risks associated with TIKOSYN therapy.

In order to become certified you must review the enclosed materials and sign the certification form. The materials include the following:

- TIKOSYN Treatment Guidelines
- Prescribing Information
- Medication Guide
- Prescriber Certification Form

When you have reviewed all the materials, **please sign and mail or fax back the certification form.** The fax number is (800)-788-2637. After we have received your certification form, we will send a written confirmation of receipt.

In addition to your certification, **retail pharmacies** and **institutional pharmacies** must also be certified in order to dispense TIKOSYN. Before dispensing a prescription for TIKOSYN, the pharmacist must confirm that you are a health care professional who has been certified and is listed in the Pfizer National TIKOSYN Database.

It is important that you tell your patients to fill their TIKOSYN prescriptions as soon as possible after they are discharged to avoid any disruptions in their treatment. Although patients must be provided with TIKOSYN upon discharge, it may take a few business days for the pharmacy to order TIKOSYN for subsequent prescriptions.

Should you have any questions regarding the certification program, please call 1-877-TIKOSYN or visit [www.TIKOSYNREMS.com](http://www.TIKOSYNREMS.com).

Regards,

Robert Wolkow, MD, FAAFP  
Senior Medical Director/Team Leader  
U.S. Brands  
Established Products Business Unit  
TKU00124

©2011 Pfizer Inc

All rights reserved

Printed in USA/May 2011

090177e184cb75fc\Approved\Approved On: 04-Dec-2013 22:20

090177e181e995b5\Approved\Approved On: 06-Apr-2011 15:37



U.S. Pharmaceuticals  
Pfizer Inc.  
235 East 42nd Street  
New York, NY 10017-5755

U.S. Pharmaceuticals

**New FDA Requirement:**  
**Prescriber Re-certification Required by November 2011 to Prescribe TIKOSYN® (dofetilide)**

May 2011

Dear Dr [insert last name]:

You previously completed the TIKOSYN Certification Requirement, which acknowledged that you reviewed TIKOSYN education material. **Per FDA requirements, in order to continue to prescribe TIKOSYN, you are required to secure a one-time re-certification by November 2011.**

TIKOSYN is indicated for the conversion to and maintenance of normal sinus rhythm (delay in the time to recurrence of atrial fibrillation/atrial flutter) in highly symptomatic patients with atrial fibrillation/atrial flutter of greater than 1 week.

The TIKOSYN Education Distribution Program, currently known as the TIKOSYN Risk Evaluation and Mitigation Strategy (REMS), is required by the FDA to ensure safe use of TIKOSYN in order to mitigate the risk of induced arrhythmia by

- Ensuring that TIKOSYN is prescribed only by certified prescribers, dispensed only by certified dispensers and dispensed for use only with documentation of safe use conditions;
- Educating health care providers about the risks and the need to initiate and re-initiate therapy in a health care facility that can provide calculations of creatinine clearance, continuous electrocardiographic monitoring, and cardiac resuscitation;
- Informing patients about the serious risks associated with TIKOSYN therapy.

In order to become recertified, you must review the enclosed materials and sign the certification form. The materials include the following:

- TIKOSYN Treatment Guidelines
- Prescribing Information
- Medication Guide
- Prescriber Certification Form

When you have reviewed all the materials, **please sign and mail or fax back the certification form.** The fax number is (800) 233-9141. After the certification form is received, you will receive written confirmation of receipt.

In addition to your re-certification, **retail pharmacies** and **institutional pharmacies** must also be certified. Before dispensing a prescription for TIKOSYN, the pharmacist must confirm that you are a health care professional who has been certified and is listed in the Pfizer National TIKOSYN Database.

It is important that you tell your patients to fill their TIKOSYN prescriptions as soon as possible after they are discharged to avoid any disruptions in their treatment. Although patients must be provided with TIKOSYN upon discharge, it may take a few business days for the pharmacy to order TIKOSYN for subsequent prescriptions.

Should you have any questions regarding the certification program, please call 866-249-7261 or visit [www.TIKOSYNREMS.com](http://www.TIKOSYNREMS.com).

Regards,

Robert Wolkow, MD, FAAP  
Senior Medical Director/Team Leader

TKU00124

©2011 Pfizer Inc

All rights reserved

Printed in USA/May 2011

090177e184cb75fc\Approved\Approved On: 04-Dec-2013 22:20

090177e181e995b5\Approved\Approved On: 06-Apr-2011 15:37

U.S. Brands  
Established Products Business Unit

090177e184cb75fc\Approved\Approved On: 04-Dec-2013 22:20

090177e181e995b5\Approved\Approved On: 06-Apr-2011 15:37

**TIKOSYN<sup>®</sup> (dofetilide) TREATMENT GUIDELINES**

These guidelines are part of the TIKOSYN Risk Evaluation and Mitigation Strategy (REMS) program. Prescribers and Pharmacists are required to read these guidelines and sign a Certification Form acknowledging they understand the potential risks of TIKOSYN in order to prescribe and dispense TIKOSYN.

The product information in this document is intended for residents of the United States only.

Below, you will find detailed treatment guidelines for TIKOSYN® (dofetilide). Please call 1-877-TIKOSYN if you need additional information.

## Table of Contents

Important Safety Information	Page 3
Dosing Overview	Page 4
Steps for Initiation and Dosing	Page 5
• Predose Steps	Page 5
• Dosing	Page 6
• Postdose Adjustments	Page 6
• Actions Prior to Patient Discharge	Page 7
Patient Counseling	Page 8

The product information in this document is intended for residents of the United States only.

## Important Safety Information

TIKOSYN is indicated for the conversion and maintenance of normal sinus rhythm (delay in the time to recurrence of atrial fibrillation/atrial flutter) in highly symptomatic patients with atrial fibrillation/atrial flutter of greater than 1 week.

TIKOSYN is contraindicated:

- in patients with a known hypersensitivity to the drug
- in patients with congenital or acquired long QT syndromes (baseline QT interval or QTc greater than 440 msec or 500 msec in patients with ventricular conduction abnormalities)
- in patients with severe renal impairment (calculated creatinine clearance <20 mL/min)
- with verapamil
- with hydrochlorothiazide (alone or in combination such as with triamterene)
- with cation transport inhibitors such as cimetidine\*, ketoconazole, trimethoprim (alone or in combination with sulfamethoxazole), prochlorperazine, megestrol, and dolutegravir

\*Alternatives to cimetidine include Maalox®, Prilosec®, and Zantac®

Warnings/Interactions: Inhibitors of CYP3A4 or renal cation transport, drugs that prolong the QT interval, and other antiarrhythmics may increase the risk of proarrhythmia either by increasing dofetilide exposure or by adding to its QT-prolonging effect.

Precautions/Interactions: The following should be coadministered with care as they might increase dofetilide levels: macrolide antibiotics, azole antifungal agents, protease inhibitors, selective serotonin reuptake inhibitors, amiodarone, cannabinoids, diltiazem, nefazodone, zafirlukast, norfloxacin, quinine, triamterene, metformin, amiloride, and grapefruit juice.

To minimize the risk of induced arrhythmia, patients initiated or re-initiated on TIKOSYN should be placed for a minimum of 3 days in a facility that can provide calculations of creatinine clearance, continuous electrocardiographic monitoring, and cardiac resuscitation. TIKOSYN is available only to hospitals and prescribers who have received appropriate TIKOSYN dosing and treatment initiation education.

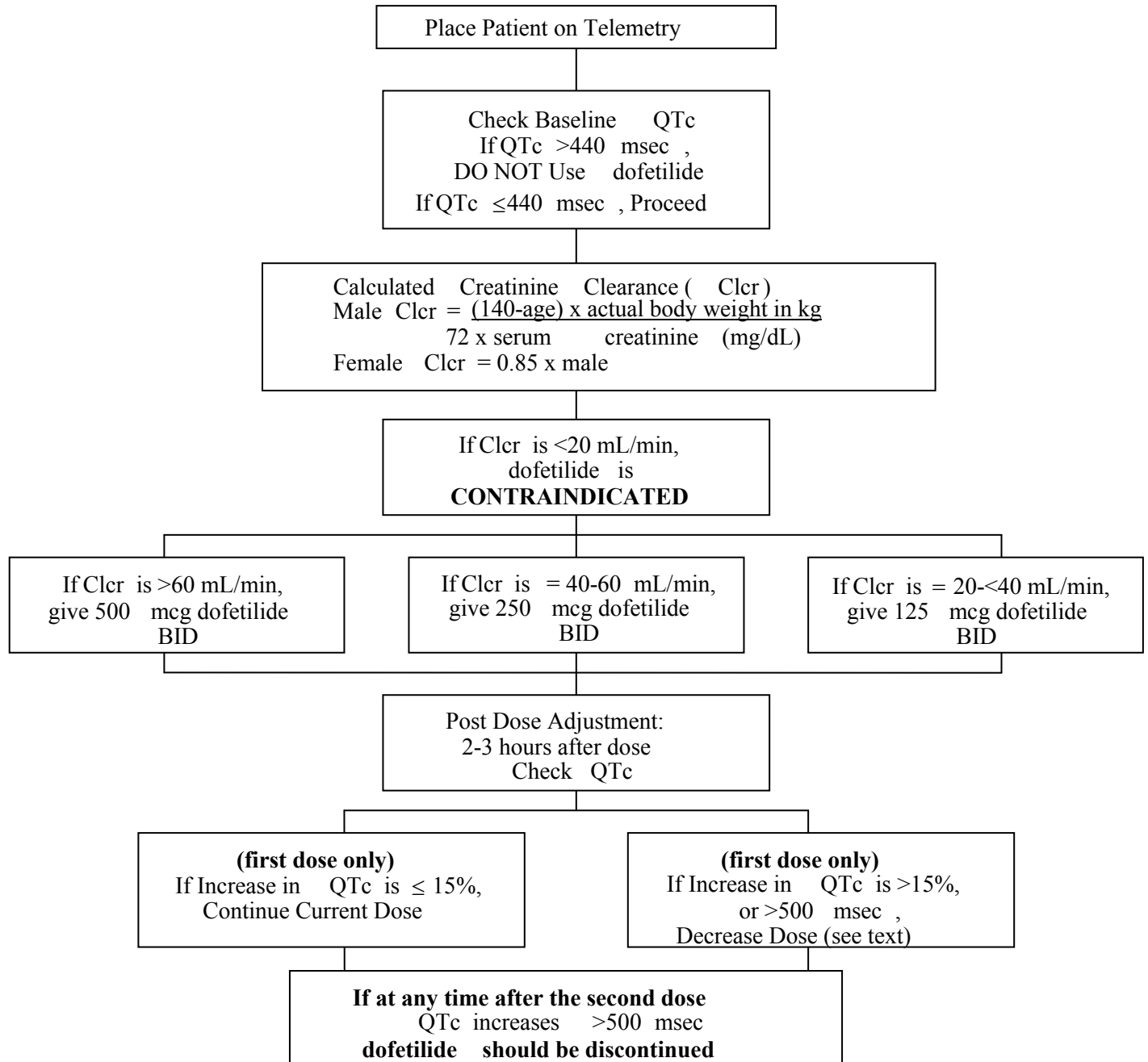
The product information in this document is intended for residents of the United States only.



## Dosing Overview

Please review this overview of dosing for TIKOSYN® (dofetilide).

Dosing Algorithm Used in the TIKOSYN Clinical Program



TIKOSYN [product information] New York, NY; Pfizer Inc.: 2013

The product information in this document is intended for residents of the United States only.

## Steps for Initiation and Dosing

The following are suggested guidelines for the initiation and dosing of TIKOSYN® (dofetilide).

### PREDOSE STEPS

1. Before initiating TIKOSYN therapy, previous antiarrhythmic therapy should be withdrawn for a minimum of 3 plasma half-lives. TIKOSYN should not be initiated following amiodarone therapy until amiodarone plasma levels are below 0.3 mcg/mL or until amiodarone has been withdrawn for at least 3 months.
2. Patients with atrial fibrillation should be anticoagulated according to usual medical practice.
3. Admit patient to the telemetry unit; choose a telemetry lead with a visible QT interval. All measurements of the QT interval should be from this lead.
4. Telemetry monitoring should continue for a minimum of 3 days or for 12 hours after conversion to normal sinus rhythm, whichever is longer.
5. The concomitant use of verapamil, hydrochlorothiazide (alone or in combination, such as with triamterene), or the cation transport system inhibitors cimetidine, trimethoprim (alone or in combination with sulfamethoxazole), and ketoconazole with TIKOSYN is contraindicated, as each drug causes a substantial increase in dofetilide plasma concentration. In addition, other known inhibitors of the renal cation transport system, such as prochlorperazine, dolutegravir and megestrol, should not be used in patients on TIKOSYN. Please see full prescribing information for TIKOSYN.
6. **CAUTION should be used when coadministering TIKOSYN with macrolide antibiotics, azole antifungals, protease inhibitors, SRIs, amiodarone, cannabinoids, diltiazem, nefazodone, norfloxacin, quinine, zafirlukast, triamterene, metformin, amiloride, and grapefruit juice, as these agents may increase blood levels of TIKOSYN.**
7. Concomitant administration of TIKOSYN and digoxin is permitted. Carefully monitor patients for the signs and symptoms of digoxin toxicity. The concomitant administration of digoxin was associated with a higher occurrence of Torsade de Pointes. It is not clear whether this represents an interaction with TIKOSYN or the presence of more severe structural heart disease in patients taking digoxin.
8. If potassium (K+) is <4.0 mEq/L, replace K+ before administration of TIKOSYN.
9. Before administering the first dose of TIKOSYN on Day 1, measure the QTc interval (determine the QT if the heart rate is <60 bpm or >100 bpm).
  - If baseline QTc is >440 msec (500 msec in patients with ventricular conduction abnormalities), TIKOSYN is **CONTRAINDICATED**; if ~440 msec, you may proceed.
  - Note time, date, and the telemetry lead on the strip.
  - All measurements of the QTc interval should be from this lead.
10. Measure the QT interval (determine QTc) 2-3 hours after each dose of TIKOSYN until the patient is discharged.

The product information in this document is intended for residents of the United States only.

11. Determine the patient's actual body weight in kg.
12. Measure patient's serum creatinine level as mg/dL.
13. Calculate patient's creatinine clearance using the following formula:

$$\text{Male creatinine clearance} = \frac{(140 - \text{age}) \times \text{actual body weight in kg}}{72 \times \text{serum creatinine (mg/dL)}}$$

$$\text{Female creatinine clearance} = \frac{(140 - \text{age}) \times \text{actual body weight in kg} \times 0.85}{72 \times \text{serum creatinine (mg/dL)}}$$

## DOSING

14. The creatinine clearance results should be received by the pharmacy to dispense the first TIKOSYN® (dofetilide) dose.
15. If the calculated creatinine clearance is <20 mL/min, TIKOSYN is **CONTRAINDICATED**.
16. If the calculated creatinine clearance is >60 mL/min, the appropriate dose of TIKOSYN is 500 mcg BID.
  - 2-3 hours after the **initial dose**, if QTc increases to >15% from baseline, then decrease TIKOSYN to 250 mcg BID.
17. If the calculated creatinine clearance is between 40 mL/min and 60 mL/min, the appropriate dose of TIKOSYN is 250 mcg BID.
  - 2-3 hours after the **initial dose**, if QTc increases to >15% from baseline, then decrease TIKOSYN to 125 mcg BID.
  - If QTc increases to >500 msec (550 msec in the presence of a ventricular conduction abnormality), TIKOSYN should be decreased to 125 mcg BID.
18. If the calculated creatinine clearance is 20 mL/min to <40 mL/min, the appropriate dose of TIKOSYN is 125 mcg BID.
  - >2-3 hours after the initial dose, if QTc increases to >15% from baseline, then decrease TIKOSYN to 125 mcg QD.
  - If QTc increases to >500 msec (550 msec in the presence of a ventricular conduction abnormality), then decrease TIKOSYN to 125 mcg QD.

## POSTDOSE ADJUSTMENTS

19. The second dose of TIKOSYN should only be given after the QT has been determined. Only 1 down titration of TIKOSYN for QTc is suggested. If QTc is still excessively prolonged, DISCONTINUE TIKOSYN therapy.
20. During therapy initiation in the hospital, at 2-3 hours after each dose of TIKOSYN, determine the QTc to see if dose adjustment is necessary.

The product information in this document is intended for residents of the United States only.

- Response to QT measurement after the first dose:
  - If QTc increases by >15% or is >500 msec (550 msec in the presence of a ventricular conduction abnormality), decrease the TIKOSYN® (dofetilide) dose as described above.
- Response to QT measurement after subsequent doses:
  - If after subsequent doses the QTc is >500 msec (550 msec in the presence of a ventricular conduction abnormality), TIKOSYN should be DISCONTINUED.

21. TIKOSYN should be given q12h (actual times may vary according to local hospital practice; the doses should be given at the same time each day, ie, 12 hours apart); QD TIKOSYN should be given at the same time every day. The risk of Torsade de Pointes is related to dose as well as to patient characteristics. Physicians may, therefore, in some cases, choose doses lower than determined by the algorithm. If at any time this lower dose is increased, the patient needs to be rehospitalized for 3 days. Previous toleration of higher doses does not eliminate the need for rehospitalization.
22. After the third TIKOSYN dose, discuss with patient the option of filling Rx with patient's mail-order or retail pharmacy. Both the mail-order and retail pharmacy must be enrolled in the T.I.P.S. program. The physician who orders a TIKOSYN prescription must be a confirmed participant of a TIKOSYN education program. You will need the patient's final dose of TIKOSYN, patient's full name (correct spelling), address, insurer, and physician's name. If the TIKOSYN dose is changed or discontinued after the prescription has been faxed, please notify the mail-order or retail pharmacy immediately.

The T.I.P.S.TM Program is designed to allow retail pharmacies to stock and dispense TIKOSYN once they have been enrolled. Please visit [www.TIKOSYNREMS.com](http://www.TIKOSYNREMS.com) for T.I.P.S.TM enrollment information.

23. Contact your hospital pharmacy to order a TIKOSYN bottle with 14 capsules of the final dosage strength.\* The patient should be discharged with this bottle to ensure a sufficient drug supply for uninterrupted dosing until the patient receives the first outpatient supply of medication. Patient will be directed to fill prescription as soon as possible, since pharmacy may not have TIKOSYN stocked and requires at least 24 hours to fill prescription.

\*This bottle is supplied free of charge to hospitals.

#### **ACTIONS PRIOR TO PATIENT DISCHARGE**

24. Ensure the patient received the TIKOSYN discharge bottle with 14 capsules.
25. Review the Medication Guide with your patient.
26. Alert patients that blood work and ECG will be re-evaluated every 3 months by their doctor to check the renal function and the QTc.
  - If QTc exceeds 500 msec (550 msec in patients with ventricular conduction abnormalities), TIKOSYN therapy should be discontinued and patients should be carefully monitored until QTc returns to baseline levels. If renal function deteriorates, adjust dose as described in steps 16-18 under "Dosing Overview."

The product information in this document is intended for residents of the United States only.

27. Inform the patient's Healthcare Professional that the patient is now on TIKOSYN® (dofetilide). Important points to mention include:

- TIKOSYN is contraindicated with verapamil, hydrochlorothiazide (alone or in combination, such as with triamterene), and cation transport inhibitors such as cimetidine, ketoconazole, trimethoprim (alone or in combination with sulfamethoxazole), prochlorperazine, megestrol and dolutegravir.
- Renal function and QTc should be re-evaluated every 3 months or as medically warranted.
- TIKOSYN is available through a mail-order or retail pharmacy enrolled in the T.I.P.S. program. If the Healthcare Professional would like to write a refill for the patient, he or she must be a confirmed participant in a TIKOSYN REMS program before the mail-order or retail pharmacy can fill the prescription. The Healthcare Professional can learn how to do this by calling 1-877-TIKOSYN (845-6796). Alternatively, the Healthcare Professional can continue to see the patient in consultation with a physician who is a confirmed participant in a TIKOSYN REMS program.
- On receipt of patient information, the Healthcare Professional should read the enclosed package insert for more information. The most serious side effect of TIKOSYN is Torsade de Pointes. The most common side effects with TIKOSYN occurred at rates similar to placebo and included headache, chest pain, and dizziness.

### Patient Counseling

28. Advise your patients to:

- Read the Medication Guide every time they receive their prescription, including refills
- Not take cimetidine, verapamil, ketoconazole, trimethoprim/sulfamethoxazole, hydrochlorothiazide, prochlorperazine, megestrol, or dolutegravir
- Tell you of all medications they are taking including prescription, non-prescription, natural/herbal remedies, and vitamins or dietary supplements
- Report symptoms associated with electrolyte imbalance, including excessive or prolonged diarrhea, sweating, vomiting, or loss of appetite or thirst
- Not miss doses or take extra doses of TIKOSYN
- Not start any other medications, including OTCs without first consulting their doctor
- Get prescriptions filled and refilled as soon as possible to avoid any disruptions in treatment
- Report any adverse events

TIKOSYN is indicated for the conversion to and maintenance of normal sinus rhythm (delay in the time to recurrence of atrial fibrillation/atrial flutter) in highly symptomatic patients with atrial fibrillation/atrial flutter of greater than 1 week.

To minimize the risk of induced arrhythmia, patients initiated or re-initiated on TIKOSYN should be placed for a minimum of 3 days in a facility that can provide calculations of creatinine clearance, continuous electrocardiographic monitoring, and cardiac resuscitation. TIKOSYN is available only to hospitals and prescribers who have received appropriate TIKOSYN dosing and treatment initiation education.

For full prescribing information, please visit [www.TIKOSYNREMS.com](http://www.TIKOSYNREMS.com).

---

The product information in this document is intended for residents of the United States only.

# TIKOSYN<sup>®</sup> (dofetilide)

## Prescriber Certification Form

For Pfizer Internal Use Only

Document Number

**PRIMARY OFFICE INFORMATION** (Please print. All information required.)

Your Name			
Address 1			
Address 2			
City			
State	Zip	Professional Designation:	<input type="checkbox"/> MD <input type="checkbox"/> DO <input type="checkbox"/> PA <input type="checkbox"/> NP
YOUR WORK PHONE		YOUR OFFICE FAX NUMBER	
YOUR EMAIL ADDRESS			
PRIMARY DEA NUMBER	If you do not have a DEA #, you must provide your state license #. If you have both, please provide both.		PRIMARY STATE LICENSE NUMBER

**PLEASE LIST ALL OTHER DEA NUMBERS (or additional state license numbers if you do not have a DEA #)**

SECOND DEA NUMBER	<input type="checkbox"/> If you have more than four DEA #'s, please put a check in the box at the left	STATE	Please print your secondary state license number and state in the space provided
THIRD DEA NUMBER			
FOURTH DEA NUMBER		STATE	Please print your tertiary state license number and state in the space provided

**Hospital Affiliation Information**

☐ In case you are affiliated with one or more hospitals, please fill in the information below, starting with your primary. If more than four affiliations, put a check in the box at the left.

<b>PRIMARY</b>				<b>SECOND</b>			
Hospital Name				Hospital Name			
Address Line 1				Address Line 1			
Address Line 2				Address Line 2			
City	State	Zip		City	State	Zip	
<b>THIRD</b>				<b>FOURTH</b>			
Hospital Name				Hospital Name			
Address Line 1				Address Line 1			
Address Line 2				Address Line 2			
City	State	Zip		City	State	Zip	

Pfizer will ensure that healthcare providers who prescribe TIKOSYN are specially certified. To become certified, each prescriber will enroll in the program by submitting to Pfizer a completed Prescriber Certification Form and agreeing to the following:

- I understand that patients initiated or re-initiated on TIKOSYN should be admitted for a minimum of 3 days to a healthcare facility that can provide calculations of creatinine clearance, continuous electrocardiographic monitoring, and cardiac resuscitation.
- I understand that following the treatment initiation and dosing guidelines as per the TIKOSYN label will decrease the risk of TIKOSYN-induced arrhythmia.
- I will inform my patients that TIKOSYN is associated with the risk of induced arrhythmias.
- I will inform my patients that their blood lab measures and ECG should be reevaluated every 3 months.
- I will provide the TIKOSYN Medication Guide to each patient at the initiation and re-initiation of TIKOSYN therapy. I will review the contents of the Medication Guide with each patient.

*I confirm that the above information is correct. I confirm that I have read and understand the TIKOSYN educational materials. I understand this information will be used to enable Pfizer to identify prescribers who are eligible to initiate and/or prescribe TIKOSYN under this program. I understand Pfizer might share this information with others acting on its behalf and/or government agencies.*

Prescriber Signature

Date

Please mail or fax this document to:

TIKOSYN  
PO Box 2147

Morrisville, PA 19067-0647

FAX (800) 233-9141

Please retain a copy of this form for your records.  
For any questions please call 1-877-TIKOSYN or  
visit [www.TIKOSYNREMS.com](http://www.TIKOSYNREMS.com).

To minimize the risk of induced arrhythmia, patients initiated or re-initiated on TIKOSYN should be placed for a minimum of 3 days in a facility that can provide calculations of creatinine clearance, continuous electrocardiographic monitoring, and cardiac resuscitation. TIKOSYN is available only to hospitals and prescribers who have received appropriate TIKOSYN dosing and treatment initiation education.



U.S. Pharmaceuticals  
Pfizer Inc.  
235 East 42nd Street  
New York, NY 10017-5755

U.S. Pharmaceuticals

**New FDA Requirement:**  
**Institution Certification Needed to Order, Stock, and Dispense TIKOSYN® (dofetilide)**

[Date]

Dear Dr. [insert last name]:

**Per FDA requirements, in order to order, stock, and dispense TIKOSYN, new pharmacies are required to secure a one-time certification.** TIKOSYN is indicated for the conversion to and maintenance of normal sinus rhythm (delay in the time to recurrence of atrial fibrillation/atrial flutter) in highly symptomatic patients with atrial fibrillation/atrial flutter of greater than 1 week.

The TIKOSYN Education Distribution Program, currently known as the TIKOSYN Risk Evaluation and Mitigation Strategy (REMS), is required by the FDA to ensure safe use of TIKOSYN in order to mitigate the risk of induced arrhythmia by

- Ensuring that TIKOSYN is prescribed only by certified prescribers, dispensed only by certified dispensers and dispensed for use only with documentation of safe use conditions;
- Educating health care providers about the risks and the need to initiate and re-initiate therapy in a health care facility that can provide calculations of creatinine clearance, continuous electrocardiographic monitoring, and cardiac resuscitation;
- Informing patients about the serious risks associated with TIKOSYN therapy.

To order, stock, and dispense TIKOSYN, you must review and follow the TIKOSYN certification procedures. This will acknowledge that you, along with the appropriate staff in the institution, have been trained regarding the TIKOSYN REMS program. In order to become certified, you must review the enclosed materials and sign the certification form. The materials include the following:

- TIKOSYN Treatment Guidelines
- Prescribing Information
- Medication Guide
- Institution Certification Form

Before dispensing TIKOSYN, the pharmacist is required to confirm that the prescriber has been certified. In addition, the institution must agree to stock and provide patients prior to discharge a free 7-day (14 count) supply of TIKOSYN and the Medication Guide. As a contingency, if the initiating/re-initiating institution does not have outpatient licensing privileges to dispense the free 7-day supply of TIKOSYN, the institution will ensure the patient's take home prescription is ordered and filled at a retail pharmacy prior to patient discharge.

When you have reviewed all the materials, **please sign and mail or fax back the certification form.** The fax number is 800-788-2637. After the certification form is received, you will receive written confirmation of receipt. In addition, before dispensing TIKOSYN, you are required to confirm that the prescriber has been certified.

Should you have any questions regarding the certification program, please call 1-877-TIKOSYN or visit [www.TIKOSYNREMS.com](http://www.TIKOSYNREMS.com).

Regards,

Robert Wolkow, MD, FAAFP  
Senior Medical Director/Team Leader  
U.S. Brands

TKU00126

©2011 Pfizer Inc

All rights reserved

Printed in USA/May 2011

090177e184cb75fc\Approved\Approved On: 04-Dec-2013 22:20

090177e181ee553b\Approved\Approved On: 10-Apr-2011 20:57

Established Products Business Unit

090177e184cb75fc\Approved\Approved On: 04-Dec-2013 22:20

090177e181ee553b\Approved\Approved On: 10-Apr-2011 20:57





U.S. Pharmaceuticals  
Pfizer Inc.  
235 East 42nd Street  
New York, NY 10017-5755

U.S. Pharmaceuticals

**New FDA Requirement:**  
**Institution Re-certification by November 2011 Needed to Order, Stock and Dispense TIKOSYN® (dofetilide)**

May 2011

Dear Dr. [insert last name]:

You previously completed the TIKOSYN Certification Requirement, which acknowledged that you reviewed the TIKOSYN education materials and that the appropriate staff in the institution had been trained regarding the TIKOSYN REMS program. **Per FDA requirements, in order to continue to order, stock, and dispense TIKOSYN you are required to secure a one-time re-certification by November 2011.**

TIKOSYN is indicated for the conversion to and maintenance of normal sinus rhythm (delay in the time to recurrence of atrial fibrillation/atrial flutter) in highly symptomatic patients with atrial fibrillation/atrial flutter of greater than 1 week.

The TIKOSYN Education Distribution currently known as the TIKOSYN Risk Evaluation and Mitigation Strategy (REMS), is required by the FDA to ensure safe use of TIKOSYN in order to mitigate the risk of induced arrhythmia by

- Ensuring that TIKOSYN is prescribed only by certified prescribers, dispensed only by certified dispensers and dispensed for use only with documentation of safe use conditions;
- Educating health care providers about the risks and the need to initiate and re-initiate therapy in a health care facility that can provide calculations of creatinine clearance, continuous electrocardiographic monitoring, and cardiac resuscitation;
- Informing patients about the serious risks associated with TIKOSYN therapy.

In order to become recertified, you must review the enclosed materials and sign the certification form. The materials include the following:

- TIKOSYN Treatment Guidelines
- Prescribing Information
- Medication Guide
- Institution Certification Form

Before dispensing TIKOSYN, the pharmacist is required to confirm that the prescriber has been certified. In addition, the institution must agree to stock and provide patients prior to discharge a free 7-day (14 count) supply of TIKOSYN and the Medication Guide. As a contingency, if the initiating/re-initiating institution does not have outpatient licensing privileges to dispense the free 7-day supply of TIKOSYN, the institution will ensure the patient's take home prescription is ordered and filled at a retail pharmacy prior to patient discharge.

When you have reviewed all the materials **please sign and mail or fax back the certification form.** The fax number is (800) 233-9141. After the certification form is received, you will receive written confirmation of receipt. In addition, before dispensing TIKOSYN, you are required to confirm that the prescriber has been certified.

Should you have any questions regarding the certification program, please call (866) 249-7261 or visit [www.TIKOSYNREMS.com](http://www.TIKOSYNREMS.com).

Regards,

Robert Wolkow, MD, FACP  
Senior Medical Director/Team Leader  
U.S. Brands

TKU00126

©2011 Pfizer Inc

All rights reserved

Printed in USA/May 2011

090177e184cb75fc\Approved\Approved On: 04-Dec-2013 22:20

090177e181ee553b\Approved\Approved On: 10-Apr-2011 20:57

Established Products Business Unit

090177e184cb75fc\Approved\Approved On: 04-Dec-2013 22:20

090177e181ee553b\Approved\Approved On: 10-Apr-2011 20:57

# TIKOSYN<sup>®</sup> (dofetilide)

## Institution Certification Form

For Pfizer Internal Use Only

Document Number

A designated representative must complete and sign this form as part of the TIKOSYN REMS requirements.

### PRIMARY INSTITUTION INFORMATION (Please print. All information required.)

Designated Representative Name

Title/Position

Institution Name

Address 1

Address 2

City

State

Zip

YOUR WORK PHONE

YOUR OFFICE FAX NUMBER

YOUR EMAIL ADDRESS

I DESIGNATE THE FOLLOWING AFFILIATED IN-HOSPITAL PHARMACIES, IDENTIFIED BY DEA NUMBER(S)  
UNDER THIS AUTHORIZATION

PLEASE LIST THE DEA #(S)  
COVERED BY THIS AGREEMENT

DEA NUMBER(S)

Each healthcare setting where TIKOSYN is dispensed for use will designate a representative. The designated representative will enroll in the TIKOSYN Program by submitting to Pfizer a completed Institution Certification Form and agreeing to the following:

- I attest that the healthcare facility where TIKOSYN is initiated or re-initiated can provide calculations of creatinine clearance, continuous electrocardiographic monitoring, and cardiac resuscitation.
- I will ensure that all appropriate staff (including physicians, pharmacists, and telemetry nurses) are trained regarding the TIKOSYN REMS program and will comply with all of the program requirements.
- I will establish or oversee the establishment of a system, order sets, protocols, or other measures to ensure appropriate dosing and monitoring.
- I will ensure that the pharmacy staff verifies that the prescribing healthcare provider is enrolled in the TIKOSYN program prior to dispensing TIKOSYN for inpatient use.
- I understand that, prior to patient discharge, the healthcare facility must either provide a free 7-day (14-count) supply of TIKOSYN and the Medication Guide to patients or ensure the patient's take-home prescription is filled.

*I confirm that the above information about this Institution is correct. I confirm I have read and understand the TIKOSYN educational materials. I understand the information will be used to enable Pfizer to identify Institutions that are eligible to dispense TIKOSYN under this program. I understand Pfizer might share this information with others acting on its behalf and/or government agencies.*

Designated Representative Signature

Date

Please mail or fax this document to:

TIKOSYN

PO Box 2147

Morrisville, PA 19067-0647

FAX (800) 233-9141

Please retain a copy of this form for your records.  
For any questions please call 1-877-TIKOSYN or  
visit [www.TIKOSYNREMS.com](http://www.TIKOSYNREMS.com).

To minimize the risk of induced arrhythmia, patients initiated or re-initiated on TIKOSYN should be placed for a minimum of 3 days in a facility that can provide calculations of creatinine clearance, continuous electrocardiographic monitoring, and cardiac resuscitation. TIKOSYN is available only to hospitals and prescribers who have received appropriate TIKOSYN dosing and treatment initiation education.

Available in  
Retail Pharmacy

**TIKOSYN**<sup>®</sup> 500  
250  
125  
mg  
capsules  
(dofetilide)

# T.I.P.S.<sup>™</sup> Procedures Booklet

Welcome to the  
**TIKOSYN In Pharmacy System**  
(T.I.P.S.) program

## Boxed Warning

To minimize the risk of induced arrhythmia, patients initiated or re-initiated on TIKOSYN should be placed for a minimum of 3 days in a facility that can provide calculations of creatinine clearance, continuous electrocardiographic monitoring, and cardiac resuscitation. TIKOSYN is available only to hospitals and prescribers who have received appropriate TIKOSYN dosing and treatment initiation education.

***Please see accompanying full Prescribing Information, including Boxed Warning, and Medication Guide.***

**Available in  
Retail Pharmacy**

## Indication

**TIKOSYN**<sup>®</sup> 500  
250  
125  
mg  
capsules  
(dofetilide)

The T.I.P.S. procedures booklet will guide you through the program's 3 steps: Enroll, Order, and Dispense TIKOSYN<sup>®</sup> (dofetilide). If you have any questions about TIKOSYN or any of the T.I.P.S. program procedures, or if you need additional program supplies, please call 1-877-TIKOSYN or visit [www.TIKOSYNREMS.com](http://www.TIKOSYNREMS.com).

**1-877-TIKOSYN**

### Boxed Warning

To minimize the risk of induced arrhythmia, patients initiated or re-initiated on TIKOSYN should be placed for a minimum of 3 days in a facility that can provide calculations of creatinine clearance, continuous electrocardiographic monitoring, and cardiac resuscitation. TIKOSYN is available only to hospitals and prescribers who have received appropriate TIKOSYN dosing and treatment initiation education.

TIKOSYN<sup>®</sup> (dofetilide) is indicated for the maintenance of normal sinus rhythm (delay in time to recurrence of atrial fibrillation/atrial flutter [AF/AFL]) in patients with atrial fibrillation/atrial flutter of greater than one week duration who have been converted to normal sinus rhythm. Because TIKOSYN can cause life-threatening ventricular arrhythmias, it should be reserved for patients in whom atrial fibrillation/atrial flutter is highly symptomatic. In general, antiarrhythmic therapy for atrial fibrillation/atrial flutter aims to prolong the time in normal sinus rhythm. Recurrence is expected in some patients.

TIKOSYN<sup>®</sup> (dofetilide) is indicated for the conversion of atrial fibrillation and atrial flutter to normal sinus rhythm.

TIKOSYN has not been shown to be effective in patients with paroxysmal atrial fibrillation.

### Selected Safety Information

TIKOSYN is contraindicated in patients with congenital or acquired long QT syndromes, a baseline QT interval or QTc >440 msec (500 msec in patients with ventricular conduction abnormalities), severe renal impairment (calculated creatinine clearance <20 mL/min), or known hypersensitivity to TIKOSYN.

***Please see accompanying full Prescribing Information, including Boxed Warning, and Medication Guide.***



## Enrolling in T.I.P.S



## Ordering TIKOSYN

**TIKOSYN**<sup>®</sup> 500  
250  
125  
mcg  
capsules  
(dofetilide)

You must enroll in the T.I.P.S. program to order and dispense TIKOSYN<sup>®</sup> (dofetilide).

### To enroll in the T.I.P.S. program

- Complete the enclosed TIKOSYN Pharmacy Certification Form
- Sign and fax the form to 1-800-788-2637
- After 1 to 2 business days, confirm your enrollment by calling **1-866-249-7261** or visiting **[www.TIKOSYNLIST.com](http://www.TIKOSYNLIST.com)**. You will need to enter your pharmacy DEA number
- Your signature on the enclosed TIKOSYN certification form acknowledges that the appropriate staff members in your pharmacy are aware of the procedures for dispensing TIKOSYN

### Selected Safety Information

TIKOSYN is also contraindicated with verapamil, hydrochlorothiazide (alone or in combination, such as with triamterene), and cation transport system inhibitors such as cimetidine, ketoconazole, trimethoprim (alone or in combination with sulfamethoxazole), prochlorperazine, megestrol, and dolutegravir because these drugs may cause an increase in dofetilide plasma concentration.

Enrollment in the T.I.P.S. program must be completed before you place an order for TIKOSYN<sup>®</sup> (dofetilide).

### To order

- NOTE: TIKOSYN can only be prescribed by Prescribers who are certified in the TIKOSYN Risk Evaluation and Mitigation Strategy (REMS) program. Please provide the Certified Prescriber's DEA number associated with each order for TIKOSYN
- Order TIKOSYN through your wholesaler
- TIKOSYN<sup>®</sup> (dofetilide) is available only in bottles of 60 capsules in 3 dosage strengths: 125, 250, and 500 mcg
- All TIKOSYN orders will be drop-shipped directly to your pharmacy

### Selected Safety Information

TIKOSYN can cause serious ventricular arrhythmias, primarily Torsade de Pointes type ventricular tachycardia, a polymorphic ventricular tachycardia associated with QT interval prolongation. QT interval prolongation is directly related to dofetilide plasma concentrations. Factors such as reduced creatinine clearance or certain dofetilide drug interactions will increase dofetilide plasma concentration. The risk of TdP can be reduced by controlling the plasma concentration through adjustment of the initial dofetilide dose according to creatinine clearance and by monitoring the ECG for excessive increases in the QT interval. Calculation of creatinine clearance and QTc for all patients must precede administration of the first dose of TIKOSYN. Renal function and QTc should be re-evaluated every 3 months or as medically warranted.

***Please see accompanying full Prescribing Information, including Boxed Warning, and Medication Guide.***

# Dispensing TIKOSYN® (dofetilide)



**TIKOSYN**® 500  
(dofetilide) 250  
125  
mg capsules

Prescriber must be a confirmed registrant in the TIKOSYN REMS program before TIKOSYN is ordered through your wholesaler or dispensed by the pharmacy.

Before ordering or dispensing a prescription for TIKOSYN, you must confirm that the prescriber is a healthcare professional who has registered for the TIKOSYN REMS program and is listed in the TIKOSYN confirmed registrant database.

To verify that a prescriber is a registrant in the program, access the program database by calling **1-866-249-7261** or visiting [www.TIKOSYNLIST.com](http://www.TIKOSYNLIST.com) and entering your pharmacy DEA number.

- DO NOT order or dispense TIKOSYN® (dofetilide) if prescriber participation in the TIKOSYN REMS program cannot be verified. Refer these prescribers to **1-866-249-7261** to speak to a TIKOSYN Customer Service Representative
- After verifying the prescriber is a confirmed registrant, stamp the back of the prescription with the TIKOSYN stamp and put your initials and the date in the space provided
  - If your pharmacy utilizes e-prescribing, contact **1-866-249-7261** to learn about the e-stamp process
- Dispense TIKOSYN® (dofetilide) as prescribed in accordance with standard pharmacy practice (TIKOSYN must be ordered directly from Pfizer per individual prescription)
- Prescriptions filled according to standard pharmacy practice are subject to standard periodic review processes to ensure compliance with these conditions

## Selected Safety Information

The most common adverse events reported were headache, chest pain, dizziness, respiratory tract infection, dyspnea, and nausea.

We thank you for your interest in Pfizer and hope this information is helpful. If you would like additional information about TIKOSYN or the T.I.P.S. program, please call 1-877-TIKOSYN or visit [www.TIKOSYNREMS.com](http://www.TIKOSYNREMS.com).



## Indication

TIKOSYN® (dofetilide) is indicated for the maintenance of normal sinus rhythm (delay in time to recurrence of atrial fibrillation/atrial flutter [AF/AFL]) in patients with atrial fibrillation/atrial flutter of greater than one week duration who have been converted to normal sinus rhythm. Because TIKOSYN can cause life-threatening ventricular arrhythmias, it should be reserved for patients in whom atrial fibrillation/atrial flutter is highly symptomatic. In general, antiarrhythmic therapy for atrial fibrillation/atrial flutter aims to prolong the time in normal sinus rhythm. Recurrence is expected in some patients.

TIKOSYN is indicated for the conversion of atrial fibrillation and atrial flutter to normal sinus rhythm.

TIKOSYN has not been shown to be effective in patients with paroxysmal atrial fibrillation.

## Important Safety Information

**To minimize the risk of induced arrhythmia, patients initiated or re-initiated on TIKOSYN should be placed for a minimum of 3 days in a facility that can provide calculations of creatinine clearance, continuous electrocardiographic monitoring, and cardiac resuscitation. TIKOSYN is available only to hospitals and prescribers who have received appropriate TIKOSYN dosing and treatment initiation education.**

TIKOSYN is contraindicated in patients with congenital or acquired long QT syndromes, a baseline QT interval or QTc >440 msec (500 msec in patients with ventricular conduction abnormalities), severe renal impairment (calculated creatinine clearance <20 mL/min), or known hypersensitivity to TIKOSYN.

TIKOSYN is also contraindicated with verapamil, hydrochlorothiazide (alone or in combination, such as with triamterene), and cation transport system inhibitors such as cimetidine, ketoconazole, trimethoprim (alone or in combination with sulfamethoxazole), prochlorperazine, megestrol, and dolutegravir because these drugs may cause an increase in dofetilide plasma concentration.

TIKOSYN can cause serious ventricular arrhythmias, primarily Torsade de Pointes type ventricular tachycardia, a polymorphic ventricular tachycardia associated with QT interval prolongation. QT interval prolongation is directly related to dofetilide plasma concentrations. Factors such as reduced creatinine clearance or certain dofetilide drug interactions will increase dofetilide plasma concentration. The risk of TdP can be reduced by controlling the plasma concentration through adjustment of the initial dofetilide dose according to creatinine clearance and by monitoring the ECG for excessive increases in the QT interval. Calculation of creatinine clearance and QTc for all patients must precede administration of the first dose of TIKOSYN. Renal function and QTc should be re-evaluated every 3 months or as medically warranted.

The most common adverse events reported were headache, chest pain, dizziness, respiratory tract infection, dyspnea, and nausea.

***Please see accompanying full Prescribing Information, including Boxed Warning, and Medication Guide.***





U.S. Pharmaceuticals  
Pfizer Inc.  
235 East 42nd Street  
New York, NY 10017-5755

U.S. Pharmaceuticals

**New FDA Requirement:**  
**Pharmacy Certification Needed to Order and Dispense TIKOSYN® (dofetilide)**

[Date]

Dear Dr. [insert last name]:

**Per FDA requirements, to order and dispense TIKOSYN, retail pharmacies are required to secure a one-time certification.** TIKOSYN is indicated for the conversion to and maintenance of normal sinus rhythm (delay in the time to recurrence of atrial fibrillation/atrial flutter) in highly symptomatic patients with atrial fibrillation/atrial flutter of greater than 1 week.

The TIKOSYN Education Distribution Program, currently known as the TIKOSYN Risk Evaluation and Mitigation Strategy (REMS) is required by the FDA to ensure safe use of TIKOSYN in order to mitigate the risk of induced arrhythmia by

- Ensuring that TIKOSYN is prescribed only by certified prescribers, dispensed only by certified dispensers and dispensed for use only with documentation of safe use conditions;
- Educating health care providers about the risks and the need to initiate and re-initiate therapy in a health care facility that can provide calculations of creatinine clearance, continuous electrocardiographic monitoring, and cardiac resuscitation;
- Informing patients about the serious risks associated with TIKOSYN therapy.

To order and dispense TIKOSYN, you must review and follow the TIKOSYN In Pharmacy System (T.I.P.S.™) certification procedures below and enroll in the T.I.P.S. program.

- Complete the enclosed TIKOSYN Pharmacy Certification Form
- Sign and fax the form to 1-800-788-2637
- After 1 to 2 business days, confirm your certification by calling 1-877-TIKOSYN (1-877-845-6796) or visit [www.tikosynlist.com](http://www.tikosynlist.com). You will need to enter your pharmacy DEA number
- Your signature on the enclosed TIKOSYN certification form acknowledges that the appropriate staff members in your pharmacy are aware of the procedures for dispensing TIKOSYN
- Please post the enclosed magnetic reference piece as a reference of the T.I.P.S. program procedures and TIKOSYN contraindications in your pharmacy

Upon receipt of your certification form, a written confirmation will be sent to you. A TIKOSYN stamp will also be sent to you after certification so that you may stamp prescriptions.

Through pharmacy certification the pharmacy acknowledges that:

- The pharmacist will verify that a prescriber has participated in the TIKOSYN REMS and is confirmed in the Pfizer National TIKOSYN Database before dispensing.
- The pharmacist will stamp each prescription for distribution with the T.I.P.S. stamp, verifying that the prescriber is a confirmed participant in the TIKOSYN REMS. The pharmacist will then initial and date the TIKOSYN stamped prescription in the appropriate areas.
- The pharmacist will dispense a Medication Guide with each prescription.

Should you have any questions regarding the certification program, please call 1-877-TIKOSYN or visit [www.TIKOSYNREMS.com](http://www.TIKOSYNREMS.com).

Regards,



U.S. Pharmaceuticals  
Pfizer Inc.  
235 East 42nd Street  
New York, NY 10017-5755

---

**U.S. Pharmaceuticals**

Robert Wolkow, MD, FAAFP  
Senior Medical Director/Team Leader  
U.S. Brands  
Established Products Business Unit

090177e184cb75fc\Approved\Approved On: 04-Dec-2013 22:20

090177e1821b774a\Approved\Approved On: 30-Jun-2011 12:29



U.S. Pharmaceuticals  
Pfizer Inc.  
235 East 42nd Street  
New York, NY 10017-5755

U.S. Pharmaceuticals

**New FDA Requirement:**  
**Pharmacy Re-certification by November 2011 Needed to Order and Dispense TIKOSYN® (dofetilide)**

May 2011

Dear Dr. [insert last name]:

You previously completed the TIKOSYN In Pharmacy System (T.I.P.S.™) certification procedure and enrolled in the T.I.P.S. program, which acknowledged that you reviewed TIKOSYN materials. **Per FDA requirements, in order to continue to order and dispense TIKOSYN you are required to secure a one-time re-certification by November 2011.**

TIKOSYN is indicated for the conversion to and maintenance of normal sinus rhythm (delay in the time to recurrence of atrial fibrillation/atrial flutter) in highly symptomatic patients with atrial fibrillation/atrial flutter of greater than 1 week.

The TIKOSYN Education Distribution Program, currently known as the TIKOSYN Risk Evaluation and Mitigation Strategy (REMS) is required by the FDA to ensure safe use of TIKOSYN in order to mitigate the risk of induced arrhythmia by

- Ensuring that TIKOSYN is prescribed only by certified prescribers, dispensed only by certified dispensers and dispensed for use only with documentation of safe use conditions;
- Educating health care providers about the risks and the need to initiate and re-initiate therapy in a health care facility that can provide calculations of creatinine clearance, continuous electrocardiographic monitoring, and cardiac resuscitation;
- Informing patients about the serious risks associated with TIKOSYN therapy.

In order to continue to order and dispense TIKOSYN, you must review and follow the T.I.P.S. certification procedures below and enroll in the T.I.P.S. program.

- Complete the enclosed TIKOSYN Pharmacy Certification Form
- Sign and fax the form to 1-800-233-9141
- After 1 to 2 business days, confirm your certification by calling 1-877-TIKOSYN (1-877-845-6796) or visit [www.tikosynlist.com](http://www.tikosynlist.com). You will need to enter your pharmacy DEA number
- Your signature on the enclosed TIKOSYN Pharmacy Certification Form acknowledges that the appropriate staff members in your pharmacy are aware of the procedures for dispensing TIKOSYN
- Please post the enclosed magnetic reference piece as a reference of the T.I.P.S. program procedures and TIKOSYN contraindications in your pharmacy

Upon receipt of your certification form, a written confirmation will be sent to you. A TIKOSYN stamp will also be sent to you after re-certification so that you may stamp prescriptions.

Through pharmacy certification the pharmacy acknowledges that:

- The pharmacist will verify that a prescriber has participated in the TIKOSYN REMS and is confirmed in the Pfizer National TIKOSYN Database before dispensing.
- The pharmacist will stamp each prescription for distribution with the T.I.P.S. stamp, verifying that the prescriber is a confirmed participant in the TIKOSYN REMS. The pharmacist will then initial and date the TIKOSYN stamped prescription in the appropriate areas.
- The pharmacist will dispense a Medication Guide with each prescription.

Should you have any questions regarding the certification program, please call (866) 249-7261 or visit [www.TIKOSYNREMS.com](http://www.TIKOSYNREMS.com).

Regards,



U.S. Pharmaceuticals  
Pfizer Inc.  
235 East 42nd Street  
New York, NY 10017-5755

---

**U.S. Pharmaceuticals**

Robert Wolkow, MD, FAAFP  
Senior Medical Director/Team Leader  
U.S. Brands  
Established Products Business Unit

090177e184cb75fc\Approved\Approved On: 04-Dec-2013 22:20

090177e1821b774a\Approved\Approved On: 30-Jun-2011 12:29

# TIKOSYN<sup>®</sup> (dofetilide)

## T.I.P.S.<sup>™</sup> (TIKOSYN in Pharmacy System)

### Pharmacy Certification Form

For Pfizer Internal Use Only

Document Number

An authorized pharmacist must complete and sign this form as part of the TIKOSYN REMS requirements.

#### PHARMACY INFORMATION \* (Please print. All information required.)

Name of Pharmacy

Authorized Pharmacist Name

Address 1

Address 2

City

State

Zip Code

TELEPHONE NUMBER

FAX NUMBER

DEA NUMBER

If you do not have a DEA  
number, you must provide  
your NABP number.

NABP NUMBER

Each pharmacy where TIKOSYN is dispensed will designate a representative. The designated representative will enroll in the TIKOSYN Program by submitting to Pfizer a completed TIKOSYN In Pharmacy System (T.I.P.S.) program Enrollment Form and agreeing to the following:

- I will ensure that all appropriate staff are trained and have read and understand the T.I.P.S. program materials.
- I will ensure that pharmacy staff will verify that the prescriber is certified in the TIKOSYN program prior to dispensing each prescription by accessing the system.
- I will ensure pharmacy staff stamp each prescription with the provided T.I.P.S. Stamp and initial and date the TIKOSYN stamped prescription in the appropriate areas, verifying prescriber certification status.
- I will ensure that the Medication Guide is provided by the pharmacy staff to the patient with each prescription.
- I will ensure a copy of the above attestations is posted or otherwise made available to pharmacy staff to ensure that the pharmacy staff understands these special conditions for use of TIKOSYN.

Note that the purpose of the TIKOSYN stamp is to document that the pharmacist has verified the certification status of the prescriber prior to dispensing TIKOSYN. The purpose of the pharmacy's standard periodic review process, in reference to the stamp, is to verify that TIKOSYN Program procedures, to which the pharmacy has attested, are being carried out.

*I confirm that the above information about this pharmacy is correct. I confirm that I have read and understand the TIKOSYN educational materials. I understand the information will be used to enable Pfizer to identify Pharmacies that are eligible to dispense TIKOSYN under this program. I understand Pfizer might share this information with others acting on its behalf and/or government agencies.*

Authorized Pharmacist Signature

Date

Please retain a copy of this form for your records.  
For any questions please call **1-877-TIKOSYN** or  
visit [www.TIKOSYNREMS.com](http://www.TIKOSYNREMS.com).

Please mail or fax this document to:

TIKOSYN  
PO Box 2147  
Morrisville, PA 19067-0647  
**FAX (800) 233-9141**

\*For corporate pharmacy enrollment, check here ☐. For corporate pharmacy enrollment, a list of pharmacy sites that have been trained should be provided with this enrollment form. Please email the following information to [TIKOSYNREMS@medimedia.com](mailto:TIKOSYNREMS@medimedia.com). This list should include the required **Pharmacy Information** detailed above for each pharmacy site.

To minimize the risk of induced arrhythmia, patients initiated or re-initiated on TIKOSYN should be placed for a minimum of 3 days in a facility that can provide calculations of creatinine clearance, continuous electrocardiographic monitoring, and cardiac resuscitation. TIKOSYN is available only to hospitals and prescribers who have received appropriate TIKOSYN dosing and treatment initiation education.

Please fax this document to TIKOSYN Risk Evaluation and Mitigation Strategy (REMS)  
Database Manager at (800) 233-9141.



## Risk Evaluation and Mitigation Strategy (REMS)

A Risk Evaluation and Mitigation Strategy (REMS) is a strategy to manage known or potential serious risks associated with a drug product and is required by the Food and Drug Administration (FDA) to ensure that the benefits of the drug outweigh its risks.

### Risks associated with TIKOSYN

In order for Pfizer to communicate certain risks about TIKOSYN, Pfizer has worked with the FDA to develop materials to communicate the risk of induced arrhythmia.

**The goals of the REMS for TIKOSYN are to mitigate the risk of TIKOSYN induced arrhythmia by:**

- Ensuring that TIKOSYN is prescribed only by certified prescribers, dispensed only by certified dispensers and dispensed for use only with documentation of safe use conditions;
- Educating health care providers about the risks and the need to initiate and re-initiate therapy in a health care facility that can provide calculations of creatinine clearance, continuous electrocardiographic monitoring, and cardiac resuscitation;
- Informing patients about the serious risks associated with TIKOSYN therapy.

Please click if you are a(n):

[Prescriber](#)

[Pharmacy](#)

[Institution Pharmacy](#)

Please read the following materials:

[Prescribing Information](#)

[Medication Guide](#)

[TIKOSYN Treatment Guidelines](#)

To verify your certification status please click here

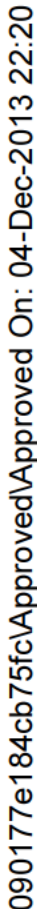
TIKOSYN is indicated for the conversion to and maintenance of normal sinus rhythm (delay in the time to recurrence of atrial fibrillation/atrial flutter) in highly symptomatic patients with atrial fibrillation/atrial flutter of greater than 1 week.

To minimize the risk of induced arrhythmia, patients initiated or re-initiated on TIKOSYN should be placed for a minimum of 3 days in a facility that can provide calculations of creatinine clearance, continuous electrocardiographic monitoring, and cardiac resuscitation (for detailed instructions regarding dose selection, see [DOSAGE AND ADMINISTRATION](#)). TIKOSYN is available only to hospitals and prescribers who have received appropriate TIKOSYN dosing and treatment initiation education (see [DOSAGE AND ADMINISTRATION](#)). For full Prescribing Information, please [click here](#).



Copyright © 2011 Pfizer Inc. All rights reserved. TKU00141

[Home](#) | [Terms of Use](#) | [Privacy Policy](#) | [Contact Us](#) | [Site Map](#)



A Risk Evaluation and Mitigation Strategy (REMS) is a strategy to manage known or potential serious risks associated with a drug product and is required by the Food and Drug Administration (FDA) to ensure that the benefits of the drug outweigh its risks.

In order for Pfizer  
the FDA to devel

The goals of the arrhythmia by:

**NEW! TIKOSYN is now contraindicated with Tivicay (dolutegravir), a medication for the treatment of HIV-1. See the revised TIKOSYN Package Insert and Treatment Guidelines for more details."**

- Ensuring that TIKOSYN is prescribed only by certified prescribers, dispensed only by certified dispensers and dispensed for use only with documentation of safe use conditions;
- Educating health care providers about the risks and the need to initiate and re-initiate therapy in a health care facility that can provide calculations of creatinine clearance, continuous electrocardiographic monitoring, and cardiac resuscitation;
- Informing patients about the serious risks associated with TIKOSYN therapy.

Please click if you are a(n):

Prescriber

Pharmacy

Institution Pharmacy

**TIKOSYN** is indicated for the conversion to and maintenance of normal sinus rhythm (delay in the time to recurrence of atrial fibrillation/atrial flutter) in highly symptomatic patients with atrial fibrillation/atrial flutter of greater than 1 week.

To minimize the risk of induced arrhythmia, patients initiated or re-initiated on TIKOSYN should be placed for a minimum of 3 days in a facility that can provide calculations of creatinine clearance, continuous electrocardiographic monitoring, and cardiac resuscitation (for detailed instructions regarding dose selection, see [DOSAGE AND ADMINISTRATION](#)). TIKOSYN is available only to hospitals and prescribers who have received appropriate TIKOSYN dosing and treatment initiation education (see [DOSAGE AND ADMINISTRATION](#)). For full Prescribing information, please [click here](#).

**Please read the following materials:**

## Prescribing Information

## Medication Guide

## TIKOSYN Treatment Guidelines

**Pharmacists:** to verify a prescriber's certification status, [click here](#)

If you are a prescriber and want to check your certification status, please call 866-249-7261



[Home](#) | [Terms of Use](#) | [Privacy Policy](#) | [Contact Us](#) | [Site Map](#)





## Prescribers

Per FDA requirements, in order to prescribe TIKOSYN new prescribers are required to complete a one-time certification. Even if you have been certified **prior to 2011**, you are required to secure a one-time recertification. To become (re)certified you must review the following materials:

[TIKOSYN Treatment Guidelines](#)

[Prescribing Information](#)

[Medication Guide](#)

When you have reviewed all the materials, please print, sign, and mail or fax the [Prescriber Certification Form](#).

The fax number is 1-800-788-2637. After we have received your certification form, we will send a written confirmation of receipt.

In addition to your certification, retail pharmacies and institutional pharmacies must also be certified in order to dispense TIKOSYN. Before dispensing a prescription for TIKOSYN, the pharmacist must confirm that you are a health care professional who has been certified and is listed in the Pfizer National TIKOSYN Database.

It is important that you tell your patients to fill their TIKOSYN prescriptions as soon as possible after they are discharged to avoid any disruptions in their treatment. Although patients must be provided with TIKOSYN upon discharge, it may take a few business days for the pharmacy to order TIKOSYN for subsequent prescriptions.

## Contact us

Should you have any questions regarding the certification program, please call 1-877-TIKOSYN.

---

TIKOSYN is indicated for the conversion to and maintenance of normal sinus rhythm (delay in the time to recurrence of atrial fibrillation/atrial flutter) in highly symptomatic patients with atrial fibrillation/atrial flutter of greater than 1 week.

To minimize the risk of induced arrhythmia, patients initiated or re-initiated on TIKOSYN should be placed for a minimum of 3 days in a facility that can provide calculations of creatinine clearance, continuous electrocardiographic monitoring, and cardiac resuscitation (for detailed instructions regarding dose selection, see [DOSAGE AND ADMINISTRATION](#)). TIKOSYN is available only to hospitals and prescribers who have received appropriate TIKOSYN dosing and treatment initiation education (see [DOSAGE AND ADMINISTRATION](#)). For full Prescribing information, please [click here](#).



Copyright © 2012 Pfizer Inc. All rights reserved. TKU00141

[Home](#) | [Terms of Use](#) | [Privacy Policy](#) | [Contact Us](#) | [Site Map](#)





## Institution Pharmacy

Per FDA requirements, in order to order, stock, and dispense TIKOSYN new pharmacies are required to secure a one-time certification. Even if your institution has been certified **prior to 2011**, you are required to secure a one-time recertification. To become (re)certified you must review the following materials:

[TIKOSYN Treatment Guidelines](#)

[Prescribing Information](#)

[Medication Guide](#)

And sign the Institution Certification Form:

NOTE: A designated representative must complete and sign this form as part of the TIKOSYN REMS requirement.

[Institution Certification Form](#)

When you have reviewed all the materials, please print, sign, and mail or fax back the Certification Form. The fax number is 1-800-788-2637. After the Certification Form is received, you will receive written confirmation of receipt. In addition, before dispensing TIKOSYN, you are required to confirm that the prescriber has been certified.

Before dispensing TIKOSYN, the pharmacist is required to confirm that the prescriber has been certified. In addition, the institution must agree to stock and provide patients prior to discharge a free 7-day (14 count) supply of TIKOSYN and the Medication Guide. As a contingency, if the initiating/re-initiating institution does not have outpatient licensing privileges to dispense the free 7-day supply of TIKOSYN, the institution will ensure the patient's take home prescription is ordered and filled at a retail pharmacy prior to patient discharge.

### Contact us

Should you have any questions regarding the TIKOSYN certification program, please call 1-877-TIKOSYN.

---

TIKOSYN is indicated for the conversion to and maintenance of normal sinus rhythm (delay in the time to recurrence of atrial fibrillation/atrial flutter) in highly symptomatic patients with atrial fibrillation/atrial flutter of greater than 1 week.

To minimize the risk of induced arrhythmia, patients initiated or re-initiated on TIKOSYN should be placed for a minimum of 3 days in a facility that can provide calculations of creatinine clearance, continuous electrocardiographic monitoring, and cardiac resuscitation (for detailed instructions regarding dose selection, see [DOSAGE AND ADMINISTRATION](#)). TIKOSYN is available only to hospitals and prescribers who have received appropriate TIKOSYN dosing and treatment initiation education (see [DOSAGE AND ADMINISTRATION](#)). For full Prescribing information, please [click here](#).



Copyright © 2012 Pfizer Inc. All rights reserved. TKU00141

[Home](#) | [Terms of Use](#) | [Privacy Policy](#) | [Contact Us](#) | [Site Map](#)



## Pharmacy

Per FDA requirements, to order and dispense TIKOSYN retail pharmacies are required to secure a one-time certification. Even if you have been certified prior to 2011, you are required to secure a one-time recertification.

To become (re)certified you must review and follow the TIKOSYN In Pharmacy System (T.I.P.S.™) certification procedures below and (re)enroll in the T.I.P.S. Program:

- Review the [Prescribing Information](#), including the [Medication Guide](#) and [Treatment Guidelines](#)
- Complete the TIKOSYN [Pharmacy Certification Form](#)
- Sign and fax the form to 1-800-788-2637
- After 1 to 2 business days, confirm your certification by calling 1-877-TIKOSYN (1-877-845-6796) or visit [www.tikosynlist.com](http://www.tikosynlist.com). You will need to enter your pharmacy DEA number
- Your signature on the TIKOSYN certification form acknowledges that the appropriate staff members in your pharmacy are aware of the procedures for dispensing TIKOSYN
- Upon receipt of your certification form, a written confirmation will be sent to you. A TIKOSYN stamp will also be sent to you after certification so that you may stamp prescriptions.
- The T.I.P.S. Kit (Procedure Booklet and Display Piece) is available [here](#). Please post the T.I.P.S. program procedures, and TIKOSYN contraindications in your pharmacy.

Through pharmacy certification the pharmacy acknowledges that:

- The pharmacist will verify that a prescriber has participated in the TIKOSYN REMS and is confirmed in the Pfizer National TIKOSYN Database before dispensing.
- The pharmacist will stamp each prescription for distribution with the T.I.P.S. stamp, verifying that the prescriber is a confirmed participant in the TIKOSYN REMS. The pharmacist will then initial and date the TIKOSYN stamped prescription in the appropriate areas.
- The pharmacist will dispense a Medication Guide with each prescription.

## Contact us

Should you have any questions regarding the certification program, please call 1-877-TIKOSYN.

TIKOSYN is indicated for the conversion to and maintenance of normal sinus rhythm (delay in the time to recurrence of atrial fibrillation/atrial flutter) in highly symptomatic patients with atrial fibrillation/atrial flutter of greater than 1 week.

To minimize the risk of induced arrhythmia, patients initiated or re-initiated on TIKOSYN should be placed for a minimum of 3 days in a facility that can provide calculations of creatinine clearance, continuous electrocardiographic monitoring, and cardiac resuscitation (for detailed instructions regarding dose selection, see [DOSAGE AND ADMINISTRATION](#)). TIKOSYN is available only to hospitals and prescribers who have received appropriate TIKOSYN dosing and treatment initiation education (see [DOSAGE AND ADMINISTRATION](#)). For full Prescribing information, please [click here](#).



Copyright © 2012 Pfizer Inc. All rights reserved. TKU00141

[Home](#) | [Terms of Use](#) | [Privacy Policy](#) | [Contact Us](#) | [Site Map](#)

This Web site allows pharmacies that have completed the TIKOSYN Risk Evaluation and Mitigation Strategy (REMS) Program to verify the status of TIKOSYN prescribers affiliated with your hospital.

## PHARMACY DEA/NABP LOOKUP

To access this system, please enter your **Pharmacy** DEA or NABP number.

Next

### Important Safety Information

To minimize the risk of induced arrhythmia, patients initiated or re-initiated on TIKOSYN should be placed for a minimum of 3 days in a facility that can provide calculations of creatinine clearance, continuous electrocardiographic monitoring, and cardiac resuscitation. TIKOSYN is available only to hospitals and prescribers who have received appropriate TIKOSYN dosing and treatment initiation education.

TIKOSYN is contraindicated in patients with congenital or acquired long QT syndromes, a baseline QT interval or QTc >440 msec (500 msec in patients with ventricular conduction abnormalities), severe renal impairment (calculated creatinine clearance <20 mL/min), or known hypersensitivity to TIKOSYN.

TIKOSYN is also contraindicated with verapamil, hydrochlorothiazide (alone or in combination, such as with triamterene), and cation transport system inhibitors such as cimetidine, ketoconazole, trimethoprim (alone or in combination with sulfamethoxazole), prochlorperazine, dolutegravir and megestrol because these drugs may cause an increase in dofetilide plasma concentration.

TIKOSYN can cause serious ventricular arrhythmias, primarily torsade de pointes type ventricular tachycardia, a polymorphic ventricular tachycardia associated with QT interval prolongation. QT interval prolongation is directly related to dofetilide plasma concentrations. Factors such as reduced creatinine clearance or certain dofetilide drug interactions will increase dofetilide plasma concentration. The risk of TdP can be reduced by controlling the plasma concentration through adjustment of the initial dofetilide dose according to creatinine clearance and by monitoring the ECG for excessive increases in the QT interval. Calculation of creatinine clearance and QTc for all patients must precede administration of the first dose of TIKOSYN. Renal function and QTc should be re-evaluated every 3 months or as medically warranted.

The most common adverse events reported were headache, chest pain, dizziness, respiratory tract infection, dyspnea, and nausea.

### Indication

TIKOSYN is indicated for the maintenance of normal sinus rhythm (delay in time to recurrence of atrial fibrillation/atrial flutter [AF/AFL]) in patients with atrial fibrillation/atrial flutter of greater than one week duration who have been converted to normal sinus rhythm. Because TIKOSYN can cause life-threatening ventricular arrhythmias, it should be reserved for patients in whom atrial fibrillation/atrial flutter is highly symptomatic. In general, antiarrhythmic therapy for atrial fibrillation/atrial flutter aims to prolong the time in normal sinus rhythm. Recurrence is expected in some patients.

TIKOSYN is indicated for the conversion of atrial fibrillation and atrial flutter to normal sinus rhythm.

TIKOSYN has not been shown to be effective in patients with paroxysmal atrial fibrillation.



The product information in this site is intended for residents of the United States only.

TKU00010C

[Copyright © 2012 Pfizer, Inc. All rights reserved.](#) | [Privacy statement](#)

## Document Approval Record

**Document Name:**

Tikosyn (dofetilide) REMS November 2013\_merged.pdf

**Document Title:**

Tikosyn (dofetilide) REMS November 2013\_merged with appendices and web page printscreens (clean)

**Signed By:**

**Date(GMT)**

**Signing Capacity**

Bailey, Steven R

04-Dec-2013 22:20:53

Final Approval

090177e184cb75fc\Approved\Approved On: 04-Dec-2013 22:20

-----  
**This is a representation of an electronic record that was signed electronically and this page is the manifestation of the electronic signature.**  
-----

/s/  
-----

MARY R SOUTHWORTH  
12/06/2013